

AMENDMENT TO 95 COOKMAN AVE APPLICATION DATED 12/10/24

REMOVED FROM APPLICATION:

Front retaining wall.

Any fencing.

Any siding work in the front gable.

Chimney Removal - Chimney to remain.

ADDITIONS/CHANGES :

See Plans submitted dated : May 29 ,2025 /June 3,2025 /June 4, 2025.

On all versions of the plan the following is proposed:

Existing columns are to remain in their current location.

Second floor balcony to be centered on the house.

8 Existing vinyl replacement windows (see pictures attached- Numbers show location on plans)

To be replaced in exact location with Andersen 400 Series 2 over 2 white (see cut sheet attached)

1 existing Vinyl replacement window to be replaced with an Andersen door to access the balcony.

Porch ceiling to have painted wood beadboard ceiling.

Porch roof to match existing 3 tab asphalt shingle

Finishing schedule :

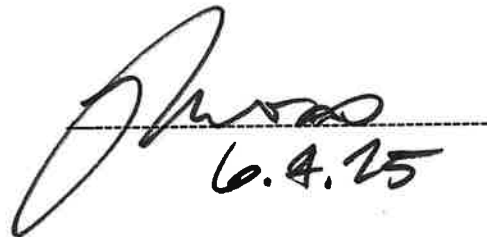
See plans and cut sheets attached.

Dawn Wilcox - Owner

Michael Moss Architect

---

Electronically Signed June 4, 2025



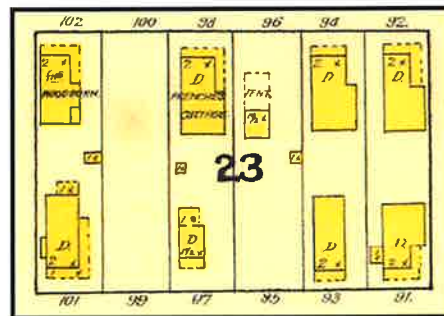
6.4.25

# 95 Cookman Avenue

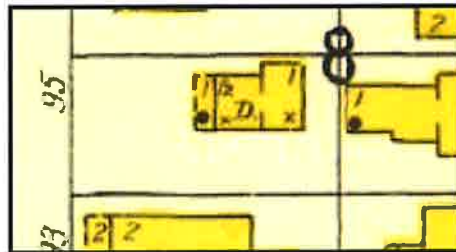
David H. Fox, 2025

## List of lot owners from the Association Lot Books:

Cookman	95	1128	? first	Wilsom, Mary E.
			?	Sherrer, Frederick A.
			?	Sey---?, Miss V.
			?	Stelas, Jacob
			1955	Mc Gerry, Dorothy V.
			1971	Brown, Eith L., MD
			1979	Rich, Thomas & Dira
			1980	Lubischer, John & Walters, Diana
			1983	Milne, Barbara



The 1895 Sanborn Map show the lot to be vacant land backing onto a lot with a tent.



The 1905 Sanborn Map show a small cottage.

Sanborn codes: yellow=wooden construction, D=dwelling, numeral=number of floors, X=wooden shingle roof, filled circle = composition roof.

The present house was built after 1905, likely in the early decades of the 20<sup>th</sup> century. There is a 1930 Sanborn Map at the museum which might be helpful.

Just home from Panama, David Thompson spent last Sunday in Ocean Grove with his friend Harry Benson, of 95 Cookman avenue.

*Ocean Grove Times* (17 Dec. 1910)

There is no mention of house construction and the only early newspaper mention is that above. Whether this was the early house or the present one is unknown. An early lot transfer is mentioned.

—On Monday Sheriff Woolley sold to Eliza Barry for \$800 lots 1128 and 1129 in Ocean Grove, between Pennsylvania and New Jersey avenues. They belonged to Frederick A. Sherrer and had been taken to foreclose a mortgage held by the purchaser.

*Asbury Park Journal* (28 Feb. 1896).

117 FRANKLIN 1 STORY BUNGALOW 15 FT. WIDE  
6 FT. SIDE PORCH  
6 FT. FRONT PORCH

⑪



\* 87 LOOKMAN 1 1/2 story BUNGALOW 13 FT. WIDE

6 FT SIDE  
Porch

②



92 FRANKLIN  
6 FT. SIDE PORCH

2 STORY

16 FT. WIDE

③



103 Embury - 2 story

\*9 ft side porch  
left front porch





WEBB AVE - 2 STORY

\* 7 FT. SIDE PORCH

16



Ⓐ TYP. "WRAP AROUND" TO SIDE DOOR

# TILT-WASH DOUBLE-HUNG FULL-FRAME WINDOWS



400 Series  
Tilt-Wash Double-Hung  
Full-Frame Windows

## SECTION REFERENCE

Tables of Sizes .....	78-81
Specifications .....	79-83
Custom Sizing .....	84
Grille Patterns .....	85
Window Details .....	85-86
Joining Details .....	86
Narroline® Conversion Kit .....	87
Combination Designs .....	181
Product Performance .....	194

## CUSTOM SIZING

in 1/8" (3) increments



Dimensions in parentheses are in millimeters.

# TILT-WASH DOUBLE-HUNG FULL-FRAME WINDOWS

## FEATURES

### Frame

**A** Exterior outer frame members are covered with a Perma-Shield® rigid vinyl cladding, minimizing maintenance and providing an attractive appearance.

**B** For exceptional long-lasting\* performance, sill members are constructed with a wood core and a Fibrex® material exterior. Sill ends are protected and sealed with weather-resistant covers.

**C** Natural wood stops are available in pine and prefinished white, dark bronze and black.\*\* A new, taller sill stop increases performance to PG40 while still maintaining egress on our most popular sizes.

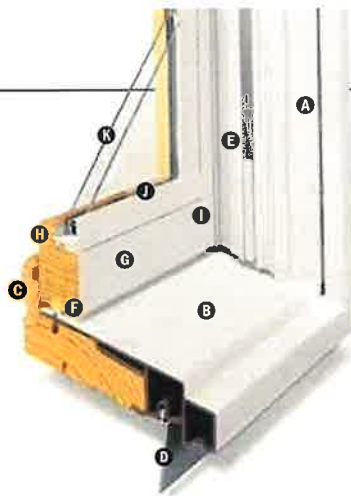
**D** A factory-applied rigid vinyl anchoring flange on the head, sill and sides of the outer frame helps secure the unit to the structure.

**E** An extruded rigid vinyl jamb liner and fin provide a protective seal against the outer frame members. Exclusive slide wash assists make it easy to tilt sash into wash mode position.



Unique block-and-tackle balancers feature sized-to-the-unit, rust-resistant springs that require no adjustment. Glass-reinforced nylon balancer shoes provide smooth, reliable sash operation. Sash can be removed, without tools, for drywall pass-through. Jamb liners are available in white or gray and must be specified when ordering. Contact your Andersen supplier for details.

**F** Weatherstrip throughout the unit provides a long-lasting, energy-efficient, weather-resistant seal. For the top and bottom rails, an encased foam material is used. The head jamb liner and sill have a rigid vinyl rib that the weatherstrip material compresses against. At the meeting rail, compressible vinyl bulb material is used. Side jamb liners use leaf-type weatherstrip with foam inserts.



### Sash

Wash assists make it easy to tilt the sash into wash mode.

**H** Wood sash members are treated with a water-repellent preservative for long-lasting\* protection and performance. Interior surfaces are unfinished pine. Low-maintenance prefinished white interiors are also available.

**G** A polyester-stabilized coat with a Flexacron® finish is electrostatically applied to penetrate all exterior surfaces for maximum protection and a lustrous finish.

**I** Sash joints simulate the look of traditional mortise-and-tenon construction inside and out.

### Glass

**J** Silicone bed glazing provides superior weathertightness and durability.

**K** High-Performance glass options include:

- Low-E4® glass
- Low-E4 HeatLock® glass
- Low-E4 Sun glass
- Low-E4 SmartSun™ glass
- Low-E4 SmartSunHeatLock glass

Tempered glass and other glass options are available. Contact your Andersen supplier.

A removable translucent film helps shield the glass from damage during delivery and construction and simplifies finishing at the jobsite.

### Patterned Glass

Patterned glass options are available. See page 12 for more details.

## EXTERIOR



## INTERIOR



Naturally occurring variations in grain, color and texture of wood make each window one of a kind. All wood interiors are unfinished unless a prefinished option is specified.

## HARDWARE FINISHES



Distressed bronze and oil rubbed bronze are "living" finishes that will change with time and use.

## DOUBLE-HUNG HARDWARE

### STANDARD

Lock & Keeper



Black | Gold Dust | **Stone** | White

Stone is standard with natural interior units. White comes with prefinished white interiors. Other finishes optional.

## OPTIONAL DOUBLE-HUNG HARDWARE\*\*

### ESTATE™

Lock & Keeper



Optional Estate lock & keeper reduces the clear opening height by 5/16" (14). Check with local building code officials to determine compliance with egress requirements.

### CONTEMPORARY

Bar Lift



Antique Brass | Black | Bright Brass  
Brushed Chrome | Distressed Bronze  
**Distressed Nickel** | Gold Dust  
Oil Rubbed Bronze | Polished Chrome  
Satin Nickel | Stone | White

### TRADITIONAL

Bar Lift

Hand Lift

Finger Lifts



Antique Brass | Black | Bright Brass | Brushed Chrome | Distressed Bronze | Distressed Nickel  
Gold Dust | **Oil Rubbed Bronze** | Polished Chrome | Satin Nickel | Stone | White

Bold name denotes finish shown.

\* Visit [andersenwindows.com/warranty](http://andersenwindows.com/warranty) for details.

\*\* Dark bronze and black interiors are only available with dark bronze and black exteriors respectively.

† "Flexacron" is a registered trademark of PPG Industries, Inc.

Dimensions in parentheses are in millimeters.

Printing limitations prevent exact replication of colors and finishes. See your Andersen supplier for actual color and finish samples.

### StormWATCH<sup>®</sup> PROTECTION

400 Series tilt-wash double-hung full-frame windows are available with Stormwatch<sup>®</sup> Protection. Visit [andersenwindows.com/coastal](http://andersenwindows.com/coastal) for more details.

#### Performance Grade (PG) Upgrade

A high inside sill stop\* with exterior sill brackets and hidden interior brackets are available to provide additional structural support for tilt-wash units, allowing standard glass units to achieve higher performance grade ratings. Performance Grade (PG) Ratings are more comprehensive than Design Pressure (DP) Ratings for measuring product performance. Use of this option will subtract 5/8" (15) from clear opening height. PG Upgrade not available for 72" (1829) and 76" (1930) heights. Contact your Andersen supplier for availability. For up-to-date performance information of individual products, please visit [andersenwindows.com](http://andersenwindows.com).

#### Sash Options



Cottage

Reverse Cottage

For more information about glass, patterned glass, art glass, grilles and TruScene insect screens, see pages 12-14.

For more information about combination designs, product performance, installation instructions and accessories, see pages 181-211 or visit [andersenwindows.com](http://andersenwindows.com).

## ACCESSORIES Sold Separately

### Frame

#### Extension Jambs



Standard jamb depth is 4 1/2" (114). Extension jambs are available in unfinished pine or prefinished white. Some sizes may be veneered.

Factory-applied and non-applied interior extension jambs are available in 1/16" (1.5) increments between 5 1/4" (129) and 7 1/8" (181). Extension jambs can be factory applied to either three sides (stool and apron application) or four sides (picture frame casing).

#### Pine Stool



A clear pine stool is available and ready for finishing. The tilt-wash stool is available in 4 9/16" (116) for use in wall depths up to 5 1/4" (133) and 6 3/16" (167) for use in wall depths up to 7 1/4" (181). Works with 2 1/4" (57) and 2 1/2" (64) wide casings.

### Hardware

#### Window Opening Control Device



A recessed window opening control device is available factory applied. It limits the sash travel to less than 4" (102) when the window is first opened. Available in stone, white and black. A field-applied window opening control device is also available.

### Grilles

Grilles are available in a variety of configurations and widths. For double-hung grille patterns, see page 84.

### Security Sensors

#### VeriLock<sup>®</sup> Sensors

VeriLock sensors are available in five colors. See page 15 for details.

#### Open/Closed Sensors

Wireless open/closed sensors are available in four colors. See page 15 for details.

### Glass

#### Andersen<sup>®</sup> Art Glass

Available for 400 Series tilt-wash transom and picture units. Andersen art glass panels come in a variety of original patterns. See pages 173-174 for details on Andersen art glass. Visit [andersenwindows.com/artglass](http://andersenwindows.com/artglass) for details and pattern information.

#### Storm/Insect Screen Combination Unit\*\*



A self-storing storm window combined with an insect screen provides greater energy efficiency, while allowing ventilation when needed.

Constructed with an aluminum frame, single-pane upper and lower glass panels and charcoal powder-coated aluminum screen mesh. Available in white, Sandtone and Terratone to match product exteriors. Canvas, forest green, dark bronze and black available by special order.

Combination units can improve Sound Transmission Class (STC) and Outdoor Indoor Transmission Class (OITC) ratings. Ideal for projects near airports, busy roadways or other noisy environments. For example, adding a combination unit to a 400 Series tilt-wash double-hung (3862) unit with Low-E4<sup>®</sup> glass will improve its STC rating from 26 to 32. Contact your Andersen supplier for additional STC and OITC rating information.

### Insect Screens

#### Insect Screen Frames



Full and half insect screens are available for most unit sizes. Frame colors match product exteriors. Half insect screen (shown above) allows ventilation without affecting the view through the upper sash. Not available on windows with Stormwatch Protection.

#### TruScene<sup>®</sup> Insect Screen

Exclusive Andersen TruScene insect screens provide over 50% more clarity than our conventional insect screens for a beautiful unobstructed view. They allow more fresh air and sunlight in, while doing a better job of keeping out small insects.

#### Conventional Insect Screen

Conventional insect screens have charcoal powder-coated aluminum screen mesh.

### Exterior Trim

This product is available with Andersen exterior trim. See pages 175-180 for details.

#### CAUTION:

- Painting and staining may cause damage to rigid vinyl.
- Do not paint 400 Series windows with white, canvas, Sandtone, forest green, dark bronze or black exterior colors.
- Andersen does not warrant the adhesion or performance of homeowner-applied paint over vinyl or other factory-coated surfaces.
- 400 Series windows in Terratone color may be painted any color lighter than Terratone color using quality oil-based or latex paint.
- For vinyl painting instructions and preparation, contact your Andersen supplier.
- Do not paint weatherstrip.
- Creosote-based stains should not come in contact with Andersen products.
- Abrasive cleaners or solutions containing corrosive solvents should not be used on Andersen products.

400 Series  
Tilt-Wash Double-Hung  
Full-Frame Windows

\* Infringes on the overall net clear opening. Unit clear operable area may not meet egress requirements. See your local building code official for more information.

\*\* Do not add combination units to windows with Low-E4 Sun glass, unless window glass is tempered. Combination units may also reduce the overall clear operable area of the window. See your local code official for egress requirements in your area.

† Values are based on comparison of Andersen double-hung window conversion kit U-Factor to the U-Factor for clear dual-pane glass non-metal frame default values from the 2006, 2009, 2012, 2015 and 2018 International Energy Conservation Code "Glazed Fenestration" Default Tables. Dimensions in parentheses are in millimeters.

# TILT-WASH DOUBLE-HUNG FULL-FRAME WINDOWS

**Table of Tilt-Wash Double-Hung Window Sizes**

Scale 1/8" (3) = 1'-0" (305) — 1:96

Window Dimension	1'-9 5/8" (549)	2'-1 5/8" (651)	2'-5 5/8" (752)	2'-7 5/8" (803)	2'-9 5/8" (854)	2'-11 5/8" (905)	3'-1 5/8" (956)	3'-5 5/8" (1057)	3'-9 5/8" (1159)
Minimum Rough Opening	1'-10 1/8" (562)	2'-2 1/8" (664)	2'-6 1/8" (765)	2'-8 1/8" (816)	2'-10 1/8" (867)	3'-0 1/8" (917)	3'-2 1/8" (968)	3'-6 1/8" (1070)	3'-10 1/8" (1172)
Unobstructed Glass (lower sash only)	15" (381)	19" (483)	23" (584)	25" (635)	27" (686)	29" (737)	31" (787)	35" (889)	39" (991)
CUSTOM WIDTHS — 21 5/8" to 45 5/8"									
CUSTOM HEIGHTS — 36 7/8" to 92 7/8"	3'-0 7/8" (937)	3'-0 7/8" (937)	3'-0 7/8" (937)	3'-0 7/8" (937)	3'-0 7/8" (937)	3'-0 7/8" (937)	3'-0 7/8" (937)	3'-0 7/8" (937)	3'-0 7/8" (937)
	3'-4 7/8" (1038)	3'-4 7/8" (1038)	3'-4 7/8" (1038)	3'-4 7/8" (1038)	3'-4 7/8" (1038)	3'-4 7/8" (1038)	3'-4 7/8" (1038)	3'-4 7/8" (1038)	3'-4 7/8" (1038)
	3'-8 7/8" (1140)	3'-8 7/8" (1140)	3'-8 7/8" (1140)	3'-8 7/8" (1140)	3'-8 7/8" (1140)	3'-8 7/8" (1140)	3'-8 7/8" (1140)	3'-8 7/8" (1140)	3'-8 7/8" (1140)
	4'-0 7/8" (1241)	4'-0 7/8" (1241)	4'-0 7/8" (1241)	4'-0 7/8" (1241)	4'-0 7/8" (1241)	4'-0 7/8" (1241)	4'-0 7/8" (1241)	4'-0 7/8" (1241)	4'-0 7/8" (1241)
	4'-4 7/8" (1343)	4'-4 7/8" (1343)	4'-4 7/8" (1343)	4'-4 7/8" (1343)	4'-4 7/8" (1343)	4'-4 7/8" (1343)	4'-4 7/8" (1343)	4'-4 7/8" (1343)	4'-4 7/8" (1343)
	4'-8 7/8" (1445)	4'-8 7/8" (1445)	4'-8 7/8" (1445)	4'-8 7/8" (1445)	4'-8 7/8" (1445)	4'-8 7/8" (1445)	4'-8 7/8" (1445)	4'-8 7/8" (1445)	4'-8 7/8" (1445)
	5'-0 7/8" (1546)	5'-0 7/8" (1546)	5'-0 7/8" (1546)	5'-0 7/8" (1546)	5'-0 7/8" (1546)	5'-0 7/8" (1546)	5'-0 7/8" (1546)	5'-0 7/8" (1546)	5'-0 7/8" (1546)
	5'-4 7/8" (1648)	5'-4 7/8" (1648)	5'-4 7/8" (1648)	5'-4 7/8" (1648)	5'-4 7/8" (1648)	5'-4 7/8" (1648)	5'-4 7/8" (1648)	5'-4 7/8" (1648)	5'-4 7/8" (1648)
	5'-8 7/8" (1749)	5'-8 7/8" (1749)	5'-8 7/8" (1749)	5'-8 7/8" (1749)	5'-8 7/8" (1749)	5'-8 7/8" (1749)	5'-8 7/8" (1749)	5'-8 7/8" (1749)	5'-8 7/8" (1749)
	6'-0 7/8" (1851)	6'-0 7/8" (1851)	6'-0 7/8" (1851)	6'-0 7/8" (1851)	6'-0 7/8" (1851)	6'-0 7/8" (1851)	6'-0 7/8" (1851)	6'-0 7/8" (1851)	6'-0 7/8" (1851)
	6'-4 7/8" (1953)	6'-4 7/8" (1953)	6'-4 7/8" (1953)	6'-4 7/8" (1953)	6'-4 7/8" (1953)	6'-4 7/8" (1953)	6'-4 7/8" (1953)	6'-4 7/8" (1953)	6'-4 7/8" (1953)
CUSTOM HEIGHTS — 48 7/8" to 76 7/8"									
CUSTOM HEIGHTS — 48 7/8" to 76 7/8"	48 7/8" (1241)	48 7/8" (1241)	48 7/8" (1241)	48 7/8" (1241)	48 7/8" (1241)	48 7/8" (1241)	48 7/8" (1241)	48 7/8" (1241)	48 7/8" (1241)
	52 7/8" (1343)	52 7/8" (1343)	52 7/8" (1343)	52 7/8" (1343)	52 7/8" (1343)	52 7/8" (1343)	52 7/8" (1343)	52 7/8" (1343)	52 7/8" (1343)
	56 7/8" (1445)	56 7/8" (1445)	56 7/8" (1445)	56 7/8" (1445)	56 7/8" (1445)	56 7/8" (1445)	56 7/8" (1445)	56 7/8" (1445)	56 7/8" (1445)
	60 7/8" (1546)	60 7/8" (1546)	60 7/8" (1546)	60 7/8" (1546)	60 7/8" (1546)	60 7/8" (1546)	60 7/8" (1546)	60 7/8" (1546)	60 7/8" (1546)
	64 7/8" (1648)	64 7/8" (1648)	64 7/8" (1648)	64 7/8" (1648)	64 7/8" (1648)	64 7/8" (1648)	64 7/8" (1648)	64 7/8" (1648)	64 7/8" (1648)
	68 7/8" (1749)	68 7/8" (1749)	68 7/8" (1749)	68 7/8" (1749)	68 7/8" (1749)	68 7/8" (1749)	68 7/8" (1749)	68 7/8" (1749)	68 7/8" (1749)
	72 7/8" (1851)	72 7/8" (1851)	72 7/8" (1851)	72 7/8" (1851)	72 7/8" (1851)	72 7/8" (1851)	72 7/8" (1851)	72 7/8" (1851)	72 7/8" (1851)
	76 7/8" (1953)	76 7/8" (1953)	76 7/8" (1953)	76 7/8" (1953)	76 7/8" (1953)	76 7/8" (1953)	76 7/8" (1953)	76 7/8" (1953)	76 7/8" (1953)
	80 7/8" (2054)	80 7/8" (2054)	80 7/8" (2054)	80 7/8" (2054)	80 7/8" (2054)	80 7/8" (2054)	80 7/8" (2054)	80 7/8" (2054)	80 7/8" (2054)
	84 7/8" (2156)	84 7/8" (2156)	84 7/8" (2156)	84 7/8" (2156)	84 7/8" (2156)	84 7/8" (2156)	84 7/8" (2156)	84 7/8" (2156)	84 7/8" (2156)



Custom-size windows are available in 1/8" (3) increments.

See page 84 for custom sizing.

Grille patterns shown on page 85.

Cottage or reverse cottage sash ratio available for heights shown below in all widths.

CUSTOM WIDTHS — 21 5/8" to 45 5/8"

CUSTOM HEIGHTS — 48 7/8" to 76 7/8"



Size tables for windows with cottage or reverse cottage sash are available at [andersenwindows.com/sizing](http://andersenwindows.com/sizing).

\* "Window Dimension" always refers to outside frame to frame dimension.

\* "Minimum Rough Opening" dimensions may need to be increased to allow for use of building wraps, flashing, sill panning, brackets, fasteners or other items. See pages 210-211 for more details.

\* Dimensions in parentheses are in millimeters. Ø Meet or exceed clear opening area of 5.7 sq.ft. or 0.53 m², clear opening width of 20" (508) and clear opening height of 24" (610). See tables on pages 82-83.

continued on next page

**Table of Tilt-Wash Double-Hung Window Sizes** (continued)

Scale 1/8" (3) = 1'-0" (305) — 1:96

Window Dimension	1'-9 5/8"	2'-1 5/8"	2'-5 5/8"	2'-7 5/8"	2'-9 5/8"	2'-11 5/8"	3'-1 5/8"	3'-5 5/8"	3'-9 5/8"
	(549)	(651)	(752)	(803)	(854)	(905)	(956)	(1057)	(1159)
<b>Minimum Rough Opening</b>	1'-10 1/8"	2'-2 1/8"	2'-6 1/8"	2'-8 1/8"	2'-10 1/8"	3'-0 1/8"	3'-2 1/8"	3'-6 1/8"	3'-10 1/8"
	(562)	(664)	(765)	(816)	(867)	(917)	(968)	(1070)	(1172)
Unobstructed Glass (lower sash only)	15"	19"	23"	25"	27"	29"	31"	35"	39"
	(381)	(483)	(584)	(635)	(686)	(737)	(787)	(889)	(991)
<b>CUSTOM WIDTHS — 21 5/8" to 45 5/8"</b>									
	TW1872	TW2072 <sup>ø</sup>	TW2472 <sup>ø</sup>	TW2672 <sup>ø</sup>	TW2872 <sup>ø</sup>	TW21072 <sup>ø</sup>	TW3072 <sup>ø</sup>	TW3472 <sup>ø</sup>	TW3872 <sup>ø</sup>
	TW1876	TW2076 <sup>ø</sup>	TW2476 <sup>ø</sup>	TW2676 <sup>ø</sup>	TW2876 <sup>ø</sup>	TW21076 <sup>ø</sup>	TW3076 <sup>ø</sup>	TW3476 <sup>ø</sup>	TW3876 <sup>ø</sup>

\* "Window Dimension" always refers to outside frame to frame dimension.

\* "Minimum Rough Opening" dimensions may need to be increased to allow for use of building wraps, flashing, sill panning, brackets, fasteners or other items.

See pages 210-211 for more details.

\* Dimensions in parentheses are in millimeters.

ø Meet or exceed clear opening area of 5.7 sq.ft. or 0.53 m<sup>2</sup>, clear opening width of 20" (508) and clear opening height of 24" (610). See tables on pages 82-83.

Custom-size windows are available in 1/8" (3) increments. See page 84 for custom sizing.

Windows 7'-4 7/8" (2257) and 7'-8 7/8" (2359) high have interior and exterior brackets. Interior brackets, located on both sides of the meeting rail, must be flipped up for proper product performance. Andersen® reinforced joining materials must be used when vertically joining 7'-4 7/8" (2257) and 7'-8 7/8" (2359) height windows.

Grille patterns shown on page 85.

## Tilt-Wash Transom Window Area Specifications

Window Number	Glass Area Sq. Ft./ (m <sup>2</sup> )	Overall Window Area Sq. Ft./ (m <sup>2</sup> )
TWT1810	0.56 (0.05)	1.80 (0.17)
TWT1815	1.32 (0.12)	2.90 (0.27)
TWT1817	1.52 (0.14)	3.20 (0.30)
TWT18111	1.94 (0.18)	3.80 (0.35)
TWT1821	2.15 (0.20)	4.10 (0.38)
TWT1823	2.35 (0.22)	4.40 (0.41)
TWT1827	2.77 (0.26)	5.00 (0.47)
TWT1831	3.39 (0.32)	5.90 (0.55)
TWT2010	0.70 (0.07)	2.14 (0.20)
TWT2015	1.67 (0.16)	3.44 (0.32)
TWT2017	1.93 (0.18)	3.79 (0.35)
TWT20111	2.46 (0.23)	4.50 (0.42)
TWT2021	2.72 (0.25)	4.86 (0.45)
TWT2023	2.98 (0.28)	5.22 (0.49)
TWT2027	3.51 (0.33)	5.93 (0.55)
TWT2031	4.30 (0.40)	7.00 (0.65)
TWT2410	0.85 (0.08)	2.47 (0.23)
TWT2415	2.02 (0.19)	3.97 (0.37)
TWT2417	2.34 (0.22)	4.38 (0.41)
TWT24111	2.98 (0.28)	5.21 (0.48)
TWT2421	3.29 (0.31)	5.62 (0.52)
TWT2423	3.61 (0.34)	6.03 (0.56)
TWT2427	4.25 (0.40)	6.85 (0.64)
TWT2431	5.21 (0.48)	8.09 (0.75)
TWT2610	0.93 (0.09)	2.64 (0.25)
TWT2615	2.19 (0.20)	4.24 (0.39)
TWT2617	2.54 (0.24)	4.68 (0.44)

Window Number	Glass Area Sq. Ft./ (m <sup>2</sup> )	Overall Window Area Sq. Ft./ (m <sup>2</sup> )
TWT26111	3.23 (0.30)	5.56 (0.52)
TWT2621	3.58 (0.33)	6.00 (0.56)
TWT2623	3.93 (0.37)	6.44 (0.60)
TWT2627	4.62 (0.43)	7.32 (0.68)
TWT2631	5.66 (0.53)	8.63 (0.80)
TWT2810	1.00 (0.09)	2.80 (0.26)
TWT2815	2.37 (0.22)	4.51 (0.42)
TWT2817	2.74 (0.26)	4.98 (0.46)
TWT28111	3.49 (0.32)	5.91 (0.55)
TWT2821	3.87 (0.36)	6.38 (0.59)
TWT2823	4.24 (0.39)	6.84 (0.64)
TWT2827	4.99 (0.46)	7.78 (0.72)
TWT2831	6.12 (0.57)	9.18 (0.85)
TWT21010	1.07 (0.10)	2.97 (0.28)
TWT21015	2.55 (0.24)	4.78 (0.44)
TWT21017	2.95 (0.27)	5.27 (0.49)
TWT210111	3.75 (0.35)	6.26 (0.58)
TWT21021	4.15 (0.39)	6.76 (0.63)
TWT21023	4.56 (0.42)	7.25 (0.67)
TWT21027	5.36 (0.50)	8.24 (0.77)
TWT21031	6.57 (0.61)	9.73 (0.90)
TWT3010	1.15 (0.11)	3.14 (0.29)
TWT3015	2.72 (0.25)	5.05 (0.47)
TWT3017	3.15 (0.29)	5.57 (0.52)
TWT30111	4.01 (0.37)	6.61 (0.61)
TWT3021	4.44 (0.41)	7.14 (0.66)
TWT3023	4.87 (0.45)	7.66 (0.71)

Window Number	Glass Area Sq. Ft./ (m <sup>2</sup> )	Overall Window Area Sq. Ft./ (m <sup>2</sup> )
TWT3027	5.73 (0.53)	8.70 (0.81)
TWT3031	7.02 (0.65)	10.27 (0.95)
TWT3410	1.30 (0.12)	3.47 (0.32)
TWT3415	3.07 (0.29)	5.58 (0.52)
TWT3417	3.56 (0.33)	6.16 (0.57)
TWT34111	4.53 (0.42)	7.32 (0.68)
TWT3421	5.02 (0.47)	7.89 (0.73)
TWT3423	5.50 (0.51)	8.47 (0.79)
TWT3427	6.47 (0.60)	9.63 (0.90)
TWT3431	7.93 (0.74)	11.36 (1.06)
TWT3810	1.45 (0.14)	3.80 (0.35)
TWT3815	3.42 (0.32)	6.12 (0.57)
TWT3817	3.97 (0.37)	6.75 (0.63)
TWT38111	5.05 (0.47)	8.02 (0.75)
TWT3821	5.59 (0.52)	8.65 (0.80)
TWT3823	6.13 (0.57)	9.29 (0.86)
TWT3827	7.21 (0.67)	10.55 (0.98)
TWT3831	8.84 (0.82)	12.46 (1.16)
TWT31010	1.51 (0.14)	3.94 (0.37)
TWT4210	1.66 (0.15)	4.28 (0.40)
TWT41010	1.95 (0.18)	4.94 (0.46)
TWT5610	2.25 (0.21)	5.61 (0.52)
TWT6210	2.55 (0.24)	6.28 (0.58)

\* Dimensions in parentheses are in square meters.















Crop





# The **PERMA**Cast® Plus Column Collection

- Weather Proof.
- Insect Proof.
- Load Bearing.
- Low Maintenance.
- Ready to Prime and Paint.
- Limited Lifetime Warranty.\*
- Custom Fluting Available.



24" Round PermaCast® Plus Columns with Roman Corinthian Capitals and Attic bases.

## Architectural Accuracy

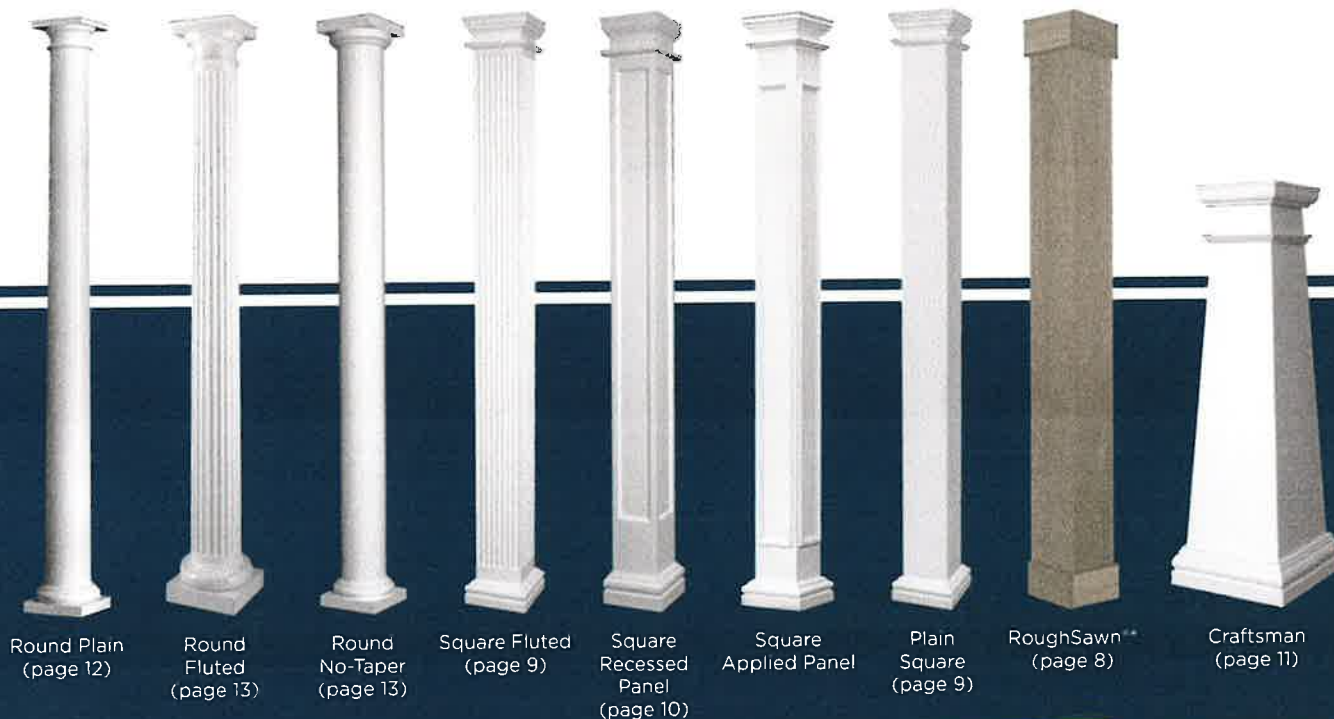
In the first century B.C., Vitruvius, a Roman architect and engineer, wrote what has become the most influential work on classic form. In it, he elaborates on the discovery by the ancient Greeks of entasis, a

gradual tapering of the upper two-thirds of the round column which offsets the undesirable illusion from eye level that the column shaft grows larger as it ascends. HB&G round columns hold true to this classic form.

\*See Warranty

HB&G PermaCast®Plus Columns are available in round or square. The round columns are fluted or plain, with or without the classic tapering of the upper two-thirds of the column. Square columns are available in a variety of styles as well, including plain or fluted,

applied panel, recessed panel, or the Craftsman style column. Our capitals and bases are made from durable low maintenance materials; and, like the columns, they maintain architectural authenticity and historical accuracy.



Roman Ionic (Round)



Greek Ionic (Round)



Colonial Cap (Round)



Roman Corinthian (Round)



Tuscan Cap (Round)



Doric Cap (Round)



Temple of the Winds (Round)



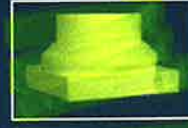
Scamozzi (Round)



Attic Base (Round)



PermaTuff® Tuscan Base (Round)



Tuscan Base Poly (Round)



Doric Base (Round)



Colonial Base (Round)



Temple of the Winds (Square)



Roman Corinthian (Square)



Scamozzi (Square)



Roman Ionic (Square)



Greek Ionic (Square)



Tuscan Cap (Square)



Crown Cap (Square)



Tuscan Base (Square)



Attic Base (Square)



Colonial Cap and Base (Square)



Beveled Cap and Base (Square)

\*Products shown have been finished for demonstration purposes. PermaCast®Plus and RoughSawn® Columns ship unfinished.

See pages 15 and 16 for cap and base dimensions.

# Round Tapered **PERMA**Cast® Plus Columns

**ROUND PERMACAST® PLUS COLUMN DIMENSIONS (IN INCHES)\***

Col. Size	A	B	C	D	E	F	G	J	K	L	O	N	R	T	Lengths Avail. (ft.)
6"	5 $\frac{1}{8}$ "	4 $\frac{3}{8}$ "	9"	1 $\frac{1}{8}$ "	1 $\frac{1}{4}$ "	$\frac{5}{8}$ "	$\frac{3}{4}$ "	1 $\frac{1}{4}$ "	1 $\frac{1}{8}$ "	8"	1"	6 $\frac{1}{4}$ "	3 $\frac{3}{8}$ "	4 $\frac{7}{8}$ "	4, 6, 8
8"	7 $\frac{1}{8}$ "	6 $\frac{1}{4}$ "	10 $\frac{1}{2}$ "	1 $\frac{3}{8}$ "	1 $\frac{3}{4}$ "	$\frac{3}{4}$ "	1 $\frac{3}{8}$ "	1 $\frac{1}{2}$ "	1 $\frac{1}{4}$ "	9 $\frac{1}{4}$ "	$\frac{1}{2}$ "	2 $\frac{1}{4}$ "	4 $\frac{3}{8}$ "	4 $\frac{1}{2}$ "	5, 6, 8, 9, 10
10"	9 $\frac{1}{8}$ "	8 $\frac{1}{8}$ "	13 $\frac{1}{8}$ "	2 $\frac{1}{8}$ "	2 $\frac{1}{2}$ "	$\frac{3}{4}$ "	1 $\frac{3}{8}$ "	1 $\frac{1}{4}$ "	1 $\frac{1}{4}$ "	11 $\frac{1}{4}$ "	$\frac{5}{8}$ "	2 $\frac{1}{4}$ "	5 $\frac{1}{4}$ "	5"	6, 8, 9, 10, 12
12"	11 $\frac{1}{8}$ "	9 $\frac{3}{8}$ "	16 $\frac{1}{2}$ "	2 $\frac{3}{8}$ "	2 $\frac{3}{8}$ "	$\frac{7}{8}$ "	1 $\frac{3}{8}$ "	1 $\frac{3}{4}$ "	2 $\frac{1}{4}$ "	13 $\frac{3}{4}$ "	$\frac{3}{4}$ "	2 $\frac{3}{8}$ "	6 $\frac{1}{8}$ "	5 $\frac{1}{4}$ "	6, 8, 9, 10, 12, 14, 16, 18
14"	13 $\frac{3}{8}$ "	11 $\frac{3}{8}$ "	19 $\frac{1}{2}$ "	3 $\frac{3}{8}$ "	3 $\frac{3}{8}$ "	1 $\frac{1}{8}$ "	1"	2"	2 $\frac{3}{8}$ "	17"	$\frac{7}{8}$ "	2 $\frac{5}{8}$ "	7 $\frac{3}{4}$ "	7"	8, 9, 10, 12, 14, 16, 18
16"	15 $\frac{1}{8}$ "	13 $\frac{3}{8}$ "	22"	3 $\frac{7}{8}$ "	3 $\frac{3}{8}$ "	1 $\frac{1}{8}$ "	1 $\frac{3}{8}$ "	2 $\frac{1}{4}$ "	2 $\frac{5}{8}$ "	19 $\frac{5}{8}$ "	1"	3"	8 $\frac{3}{8}$ "	8"	8, 10, 12, 14, 16, 18, 20
18"	17 $\frac{1}{8}$ "	15 $\frac{3}{8}$ "	24 $\frac{3}{8}$ "	4"	4"	1 $\frac{1}{8}$ "	1 $\frac{3}{8}$ "	2 $\frac{3}{4}$ "	3 $\frac{1}{8}$ "	22 $\frac{5}{8}$ "	1 $\frac{1}{2}$ "	10 $\frac{3}{4}$ "	9 $\frac{5}{8}$ "	8 $\frac{7}{8}$ "	8, 10, 12, 14, 16, 18, 20, 22, 24, 26
20"	19 $\frac{1}{8}$ "	17 $\frac{3}{8}$ "	27"	4 $\frac{1}{2}$ "	4 $\frac{1}{2}$ "	2"	1 $\frac{3}{8}$ "	2 $\frac{3}{4}$ "	3 $\frac{3}{8}$ "	24 $\frac{5}{8}$ "	1 $\frac{1}{2}$ "	10 $\frac{3}{4}$ "	11 $\frac{1}{4}$ "	9"	10, 12, 14, 16, 18, 20, 22, 24, 26
22"	21 $\frac{1}{8}$ "	19 $\frac{3}{4}$ "	30 $\frac{1}{4}$ "	5"	5"	2"	1 $\frac{3}{8}$ "	3"	3 $\frac{3}{4}$ "	27 $\frac{1}{2}$ "	1 $\frac{1}{2}$ "	10 $\frac{3}{4}$ "	12"	10 $\frac{1}{4}$ "	16, 18, 20, 22, 24, 26
24"	23 $\frac{3}{8}$ "	21 $\frac{1}{4}$ "	33 $\frac{1}{2}$ "	6"	6 $\frac{1}{4}$ "	6 $\frac{1}{4}$ "	2"	3 $\frac{1}{2}$ "	4"	30 $\frac{5}{8}$ "	1 $\frac{1}{2}$ "	10 $\frac{3}{4}$ "	13 $\frac{1}{2}$ "	11 $\frac{5}{8}$ "	12, 14, 16, 18, 20, 22, 24, 26, 28, 30
28"	28"	24 $\frac{1}{8}$ "	38"	6 $\frac{3}{4}$ "	6 $\frac{1}{2}$ "	2 $\frac{3}{4}$ "	2 $\frac{1}{4}$ "	3 $\frac{1}{4}$ "	4 $\frac{3}{8}$ "	33 $\frac{3}{8}$ "	1 $\frac{1}{2}$ "	10 $\frac{3}{4}$ "	15 $\frac{1}{2}$ "	11 $\frac{1}{4}$ "	20, 22, 24, 26, 28
30"	29 $\frac{3}{8}$ "	26 $\frac{1}{2}$ "	41 $\frac{1}{8}$ "	6 $\frac{1}{2}$ "	5 $\frac{7}{8}$ "	2 $\frac{1}{2}$ "	3"	4"	4 $\frac{3}{8}$ "	38 $\frac{1}{4}$ "	1 $\frac{1}{2}$ "	10 $\frac{3}{4}$ "	14 $\frac{1}{8}$ "	14 $\frac{7}{8}$ "	20, 22, 24, 26, 28, 30

\*There may be a variance of up to 1/4" in all dimensions. Fluted columns available in all diameters. See page 14 for Parallel dimensions. See page 16 for Decorative Capital dimensions.  
 ■ Standard Fluted Column (Fluted in mold)

• Split columns are not load bearing.

## ROUND PERMACAST® PLUS INSIDE DIMENSIONS

Inside dimension may vary up to 1/8"  
 Splitting a column will decrease inside dimension 1/8"

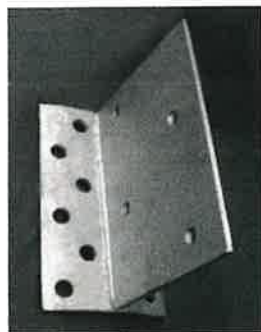


Column Size	Top I.D.	Bottom I.D.
6"	3 $\frac{3}{8}$ "	4 $\frac{1}{8}$ "
8"	3 $\frac{1}{2}$ "	6 $\frac{1}{8}$ "
10"	7 $\frac{1}{8}$ "	8 $\frac{1}{8}$ "
12"	8 $\frac{5}{8}$ "	10 $\frac{1}{8}$ "
14"	10 $\frac{7}{8}$ "	12 $\frac{3}{8}$ "
16"	12 $\frac{7}{8}$ "	15"
18"	14 $\frac{1}{2}$ "	16 $\frac{1}{8}$ "
20"	16 $\frac{5}{16}$ "	18 $\frac{5}{8}$ "
22"	18 $\frac{3}{8}$ "	20 $\frac{13}{16}$ "
24"	20"	22 $\frac{3}{8}$ "
28"	22 $\frac{1}{8}$ "	26 $\frac{3}{4}$ "
30"	25 $\frac{1}{4}$ "	28 $\frac{3}{8}$ "

\*Plain columns only.

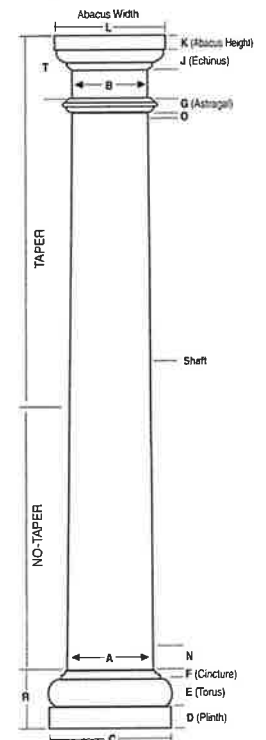
## Plumb-Fit®

To make installation even easier our 6"-12" round and square poly Tuscan Cap and Base Sets with flashing cap come with the Plumb-Fit® patented (Patent 9689674) installation system included.



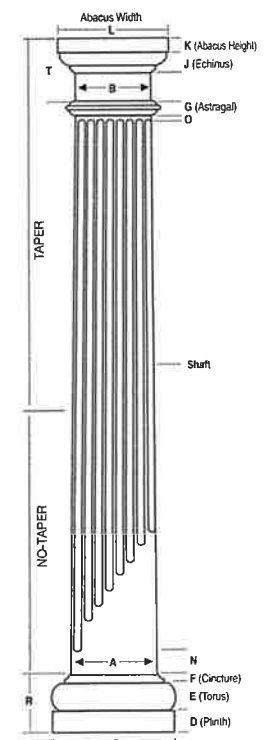
The HB&G Porch Installation Bracket includes the bracket and all required hardware. The bracket fits 20" - 30" Plain Round PermaCast® Plus Columns and will secure a 2nd story porch to our PermaCast® Plus Columns. Three brackets are required for each column.

## Poly Tuscan Cap



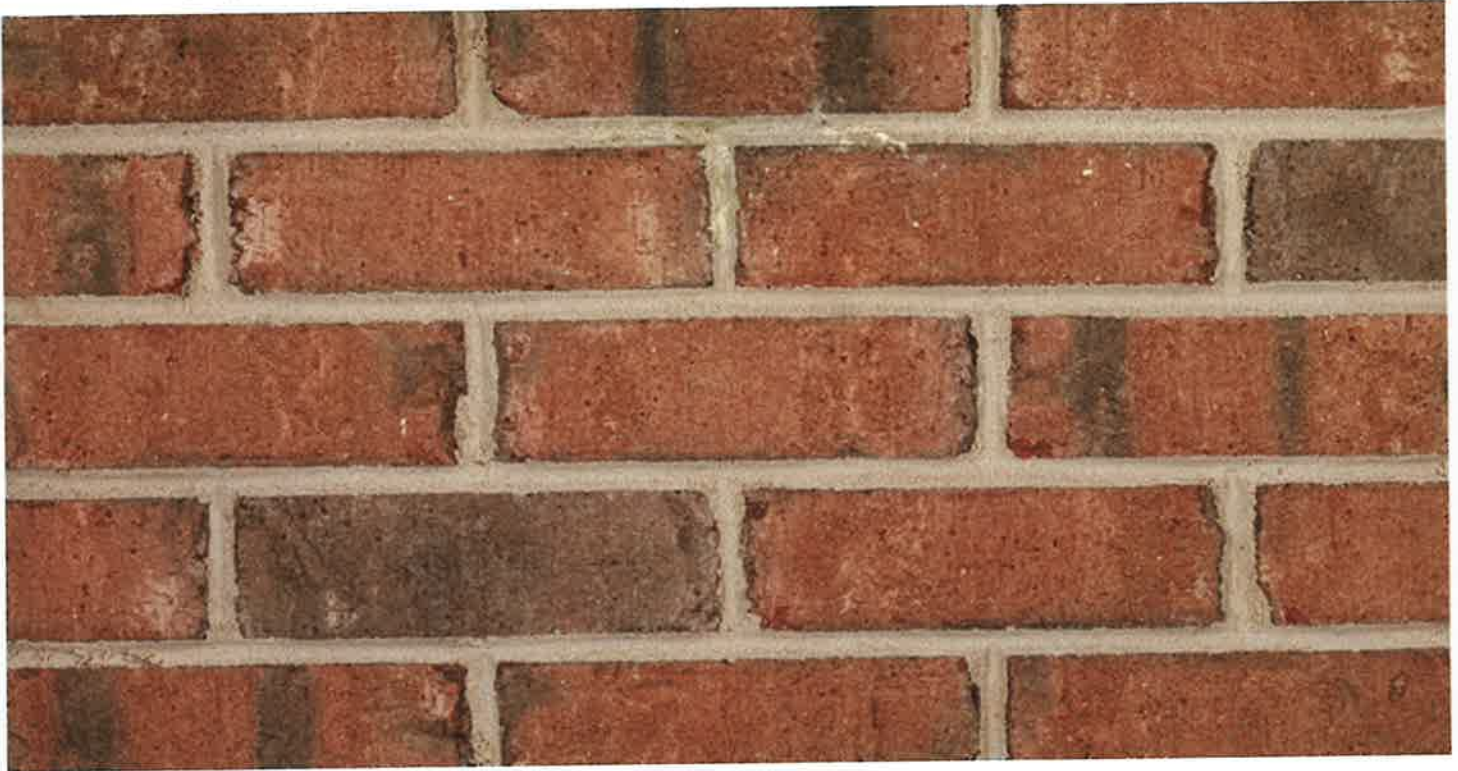
Poly Tuscan Base  
Plain Column.

## Poly Tuscan Cap



Poly Tuscan Base  
Fluted Column.

GLAZED GERY THIN BRICK



PORCH PIER

# Ashcroft Rose



Save  
Product



Compare  
Brick



[Where To Buy](#)



[Inquire Now](#)



[Download seamless tileable image](#)

BLEND LERRY PAVER



PATIO & WALKWAYS

# Danish Paver



Save  
Product



Compare  
Brick



Popular



[Where To Buy](#)



[Inquire Now](#)