

COLLEGE ACHIEVE GREATER ASBURY PARK CHARTER SCHOOL ADDITION OF INSTRUCTIONAL CLASSROOM @ MEZZANINE

3455 West Bangs Avenue, Neptune, New Jersey 07753

PROJECT DESCRIPTION:

THE PROPOSED PROJECT WILL INCLUDE THE CONVERSION OF EXISTING MEZZANINE FLOOR TO AN INSTRUCTIONAL CLASSROOM & STORAGE ROOM.

SCOPE OF WORK:

1. PROVIDE ENGINEERING SUPPORT IN THE REQUIRED MECHANICAL, ELECTRICAL & FIRE PROTECTION TO THE CONVERSION OF EXISTING MEZZANINE INSTRUCTIONAL CLASSROOM & STORAGE ROOM.
2. INSTALLATION OF NEW GAS-FIRED HEATING, DIRECT EXPANSION COOLING AIR-HANDLING UNIT IN THE MEZZANINE STORAGE ROOM.
3. PROVIDE NEW UNIT SET IN A DRAIN PAN WITH OVERFLOW SENSOR.
4. PROVIDE NEW SUPPLY, RETURN & OUTSIDE AIR DUCTWORK TO THE NEW CLASSROOM SPACE.
5. PROVIDE A PROGRAMMABLE THERMOSTAT TO OPERATE THE NEW AIR-HANDLING UNIT
6. LOCATE THE REMOTE AIR-COOLED CONDENSING UNIT AT GRADE LEVEL ON A CONCRETE PAD.
7. REMOVE EXISTING PROPELLER EXHAUST FANS FOR THE GYMNASIUM & PROVIDE NEW EXHAUST FANS & INTERLOCKED WITH THE CURRENT CONTROLS.
8. PROVIDE CARBON MONOXIDE DETECTION IN THE MEZZANINE INSTRUCTIONAL CLASSROOM & STORAGE ROOM TO MEET THE CODE REQUIREMENT.



NETTAARCHITECTS
1084 Route 22 West
Mountainside, NJ 07092
Phone: 973.379.0006
www.nettaarchitects.com

237 West 35th Street
Suite 1004
New York, NY 10004
Phone: 212.777.4338
CERTIFICATE OF AUTHORIZATION AC-438

NICHOLAS J. NETTA, AIA, NCARB
NJ License No. AI 12541

FRANCISCO J. MELENDEZ, SR., AIA
NJ License No. AI 1211B

ROBERT E. McNAMARA, RA
NJ License No. AI 997600

LAURENCE K. UHER, AIA, LEED, AP
NJ License No. AI 14394

These drawings, or parts thereof, may not be reproduced in any form, by any method, for any purpose, without the prior written consent from NICHOLAS J. NETTA, ARCHITECT.

These drawings shall be used for the specific project location indicated within the Title Block, and shall not be used at any other location without prior consent from the ARCHITECT.

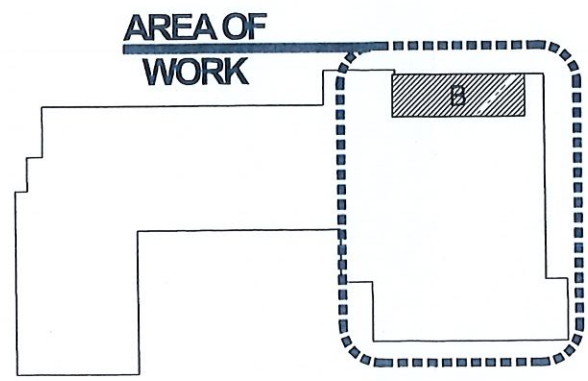
SHEET CONTENTS:

COVER SHEET & DRAWING INDEX

LOCATION MAP



AERIAL LOCATION MAP (SOURCE: GOOGLE MAPS)



KEY PLAN



NETTAARCHITECTS

1084 Route 22 West
Mountainside, NJ 07092
Phone: 973.379.0006
www.nettaarchitects.com

237 West 35th Street
Suite 1004
New York, NY 10004
Phone: 212.777.2090

CERTIFICATE OF AUTHORIZATION AC-438

DRAWING INDEX	
DWG. NO.	SHEET CONTENTS
A-000	COVER SHEET & DRAWING INDEX
ARCHITECTURAL	
A-101	MEZZANINE FLOOR PLAN
A-201	MEZZANINE PARTITION, DOOR, WINDOW TYPES & SCHEDULE
A-301	MEZZANINE FURNITURE LAYOUT PLAN
A-401	MEZZANINE FLOOR REFLECTED CEILING PLANS
A-501	MEZZANINE FLOOR FINISH PLANS
A-601	MILLWORK ELEVATIONS
A-602	MILLWORK DETAILS

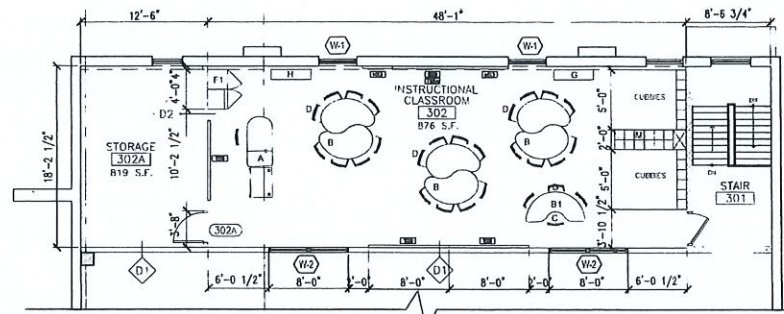
PROJECT TITLE:
COLLEGE ACHIEVE GREATER
ASBURY PARK CHARTER SCHOOL
Addition of Instructional
Classroom @ Mezzanine
3455 West Bangs Ave., Neptune, NJ 07753

SUBMISSION:

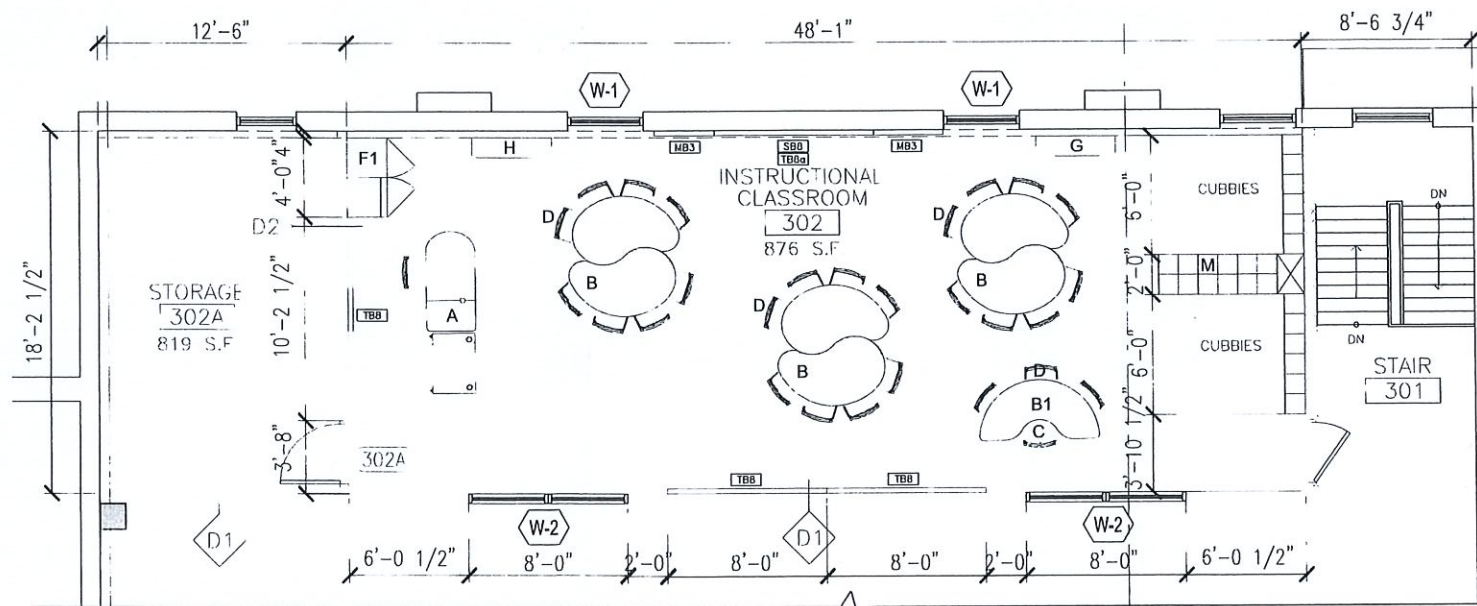
DATE	REVISIONS	REV

Date: 06.03.2022
Scale: AS SHOWN
Drawn by: BT
Checked by: LU
Job No.: 2221726
Drawing No.:

A-000

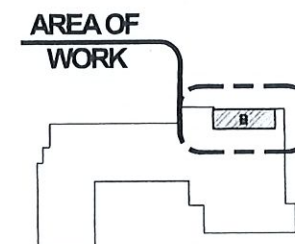


1 MEZZANINE FLOOR PLAN
 SCALE: 1/8" = 1'-0"
 LOCATION: MEZZANINE BALCONY



2 ENLARGED MEZZANINE FLOOR PLAN
 SCALE: 1/4" = 1'-0"
 LOCATION: MEZZANINE BALCONY

KEY PLAN



NETTA ARCHITECTS
 1084 Route 22 West
 Mountainside, NJ 07092
 Phone: 973.379.0006
 www.nettaarchitect.com

237 West 35th Street
 Suite 1004
 New York, NY 10004
 Phone: 212.278.4438

CERTIFICATE OF AUTHORIZATION AC-438

NICHOLAS J. NETTA, AIA, NCARB
 NJ License No. AJ 12541

FRANCISCO J. MELENDEZ, SR., AIA
 NJ License No. AJ 12118

ROBERT E. MCHAMARA, RA
 NJ License No. AJ 997600

LAURENCE K. UHER, AIA, LEED, AP
 NJ License No. AJ 14394

These drawings, or parts thereof, may not be reproduced in any form, by any method, for any purpose, without the prior written consent from NICHOLAS J. NETTA, ARCHITECT.

These drawings shall be used for the specific project location indicated within the Title Block, and shall not be used at any other location without prior consent from the ARCHITECT.

SHEET CONTENTS:

MEZZANINE FLOOR PLAN

PROJECT TITLE:

COLLEGE ACHIEVE GREATER
 ASBURY PARK CHARTER SCHOOL
 Addition of Instructional
 Classroom @ Mezzanine
 3455 West Bangs Ave., Neptune, NJ 07753

SUBMISSION:

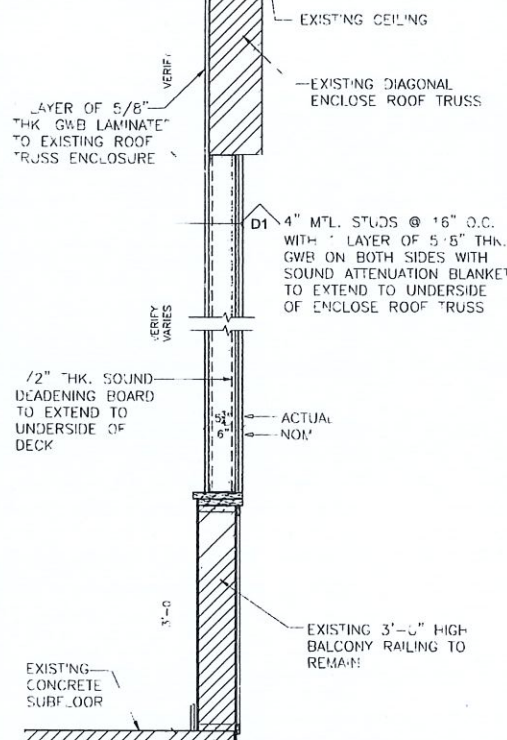
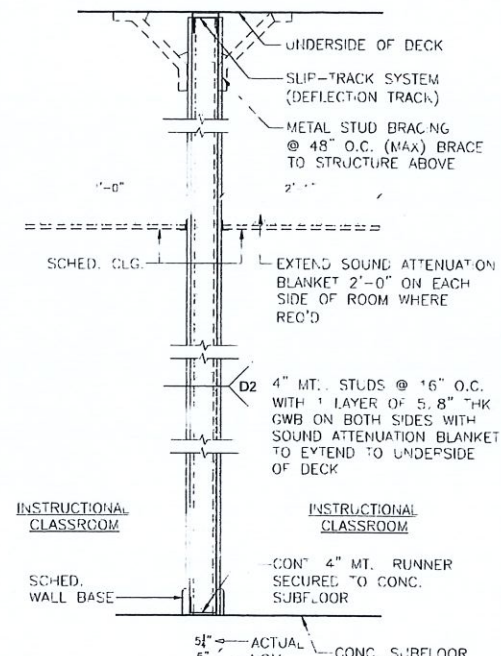
DATE	REVISIONS	REV

Date: 06.03.2022
 Scale: AS SHOWN
 Drawn by: BT
 Checked by: LU
 Job No.: 2221728
 Drawing No.:

A-101

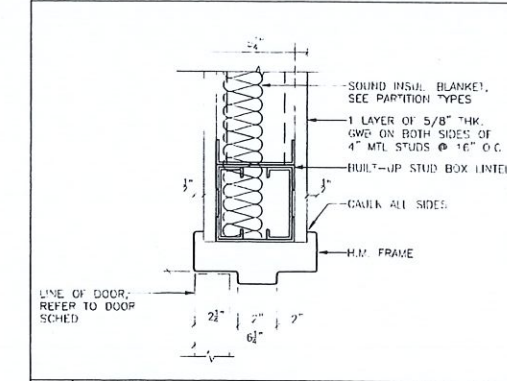
INTERIOR WALL TYPE

SCALE: 1" = 1'-0"

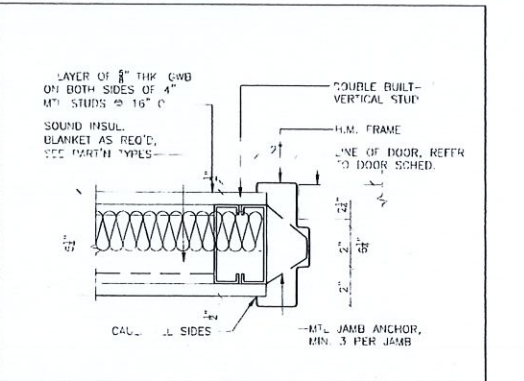


D2 DRYWALL PARTITION TYPE
NON-RATED PARTITION

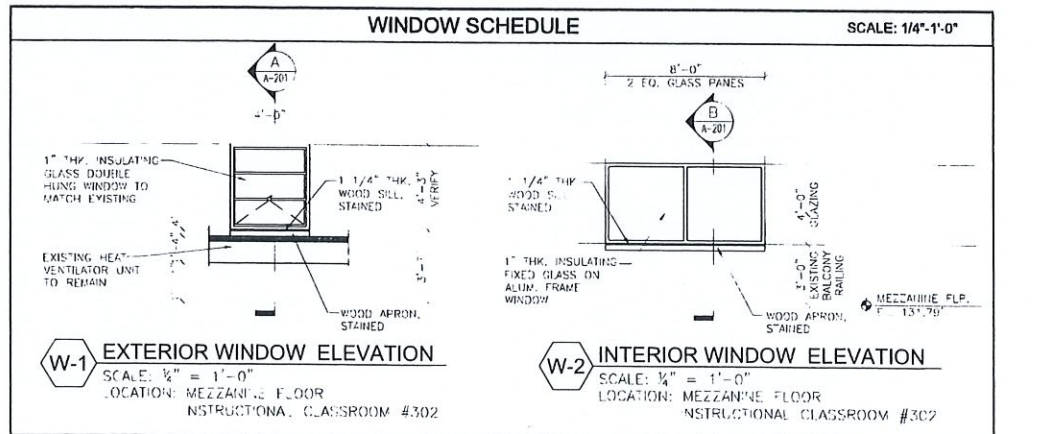
D3 DRYWALL PARTITION TYPE
NON-RATED PARTITION



H2 HEAD DETAIL
SCALE: 3" = 1'-0"



J2 JAMB DETAIL
SCALE: 3" = 1'-0"



DOOR AND FRAME SCHEDULE - MEZZANINE LEVEL

DOOR NO.	DOOR LOCATION		DOOR												FIRE-RATING	HWDR. SET	REMARKS		
	FROM	TO	WD	HGT	THK	MAT'L	FIN	TYPE	GL	MAT'L	FIN	JAMB	HEAD	SILL					
302A	INSTRUCTIONAL CLASSROOM 302	STORAGE 302A	3'-0"	7'-0"	1 1/4"	WOOD	STAIN			H.M.	DP1	1	J2	H2	AL	S1		2	

LEGEND

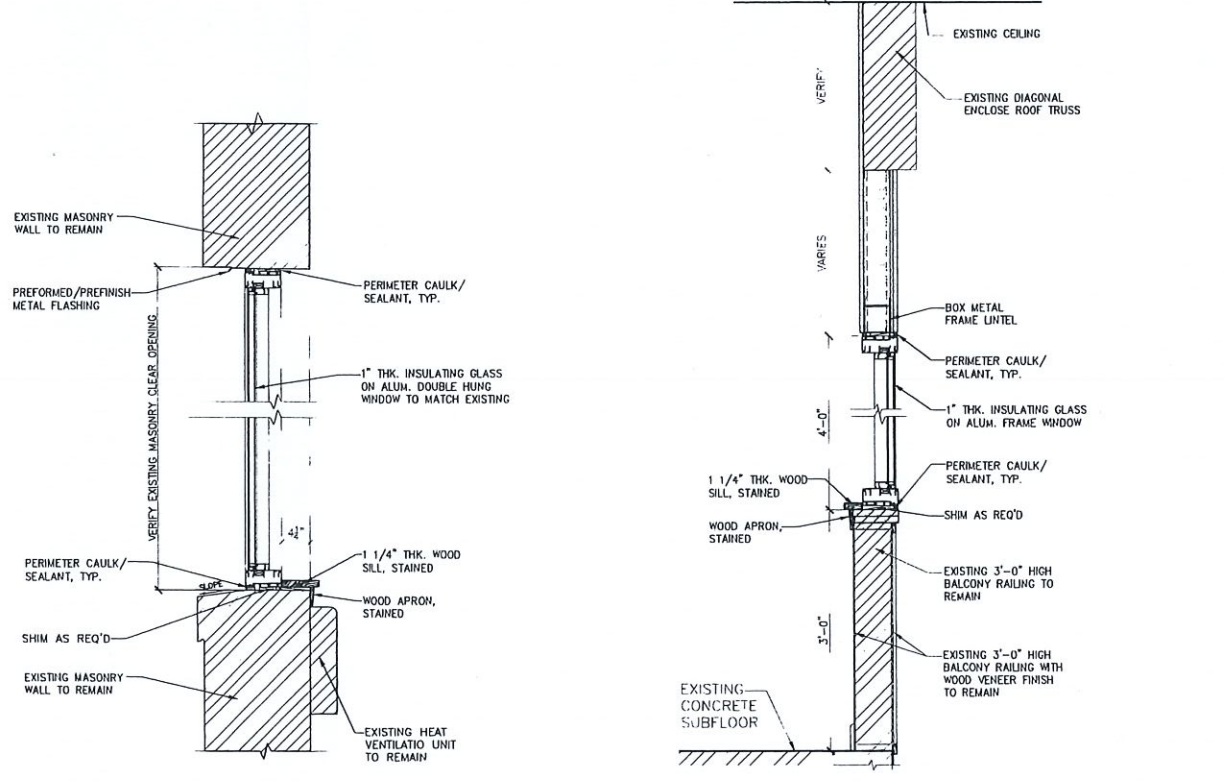
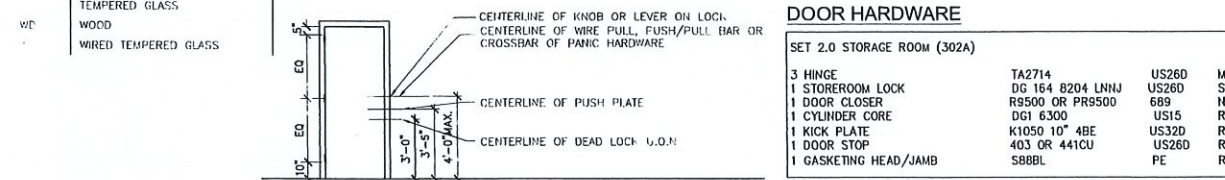
ALUM.	ALUMINUM
AL/GL	ALUMINUM/GLASS
CD	COILING DOOR
CG	COILING GRILL
CLR	CLEAR
D	DOOR FRAME PART SEE FIN. SCHED.
FRF	FIBERGLASS REINFORCED POLYESTER
GL	GLASS
G/ST	GALVANIZED STEEL
H.M.	HOLLOW METAL
F	PAINT - SEE FIN. SCHED
RB	RUBBER
STL	STEEL
S/ST	STAINLESS STEEL
ST	STONE
WD	WOOD
	WIRED TEMPERED GLASS

DOOR TYPE SCHEDULE (SCALE: 1/4" = 1'-0")

F	FLUSH DOOR
FV1	FLUSH DOOR WITH VISION GLASS

DOOR FRAME TYPE SCHEDULE (SCALE: 1/4" = 1'-0")

1	DOOR FRAME STUD WALL APPLICATION
---	----------------------------------



NETTA ARCHITECTS
237 West 35th Street
Suite 1004
New York, NY 10004
Phone: 973.375.0066
www.nettaarchitects.com
NEW YORK 212-427-4288
CERTIFICATE OF AUTHORIZATION AC-438

NICHOLAS J. NETTA, AIA, NCARB
N.J. License No. AJ 12541

FRANCISCO J. MELENDEZ, SR., AIA
N.J. License No. AJ 12118

ROBERT C. MCHAMARA, RA
N.J. License No. AJ 997600

LAURENCE K. UHER, AIA, LEED, AP
N.J. License No. AJ 14394

These drawings, or parts thereof, may not be reproduced in any form, by any method, for any purpose, without the prior written consent from NICHOLAS J. NETTA, ARCHITECT.

These drawings shall be used for the specific project location indicated within the Title Block, and shall not be used at any other location without prior consent from the ARCHITECT.

SHEET CONTENTS:

PARTITION, DOOR, WINDOW TYPES & SCHEDULE

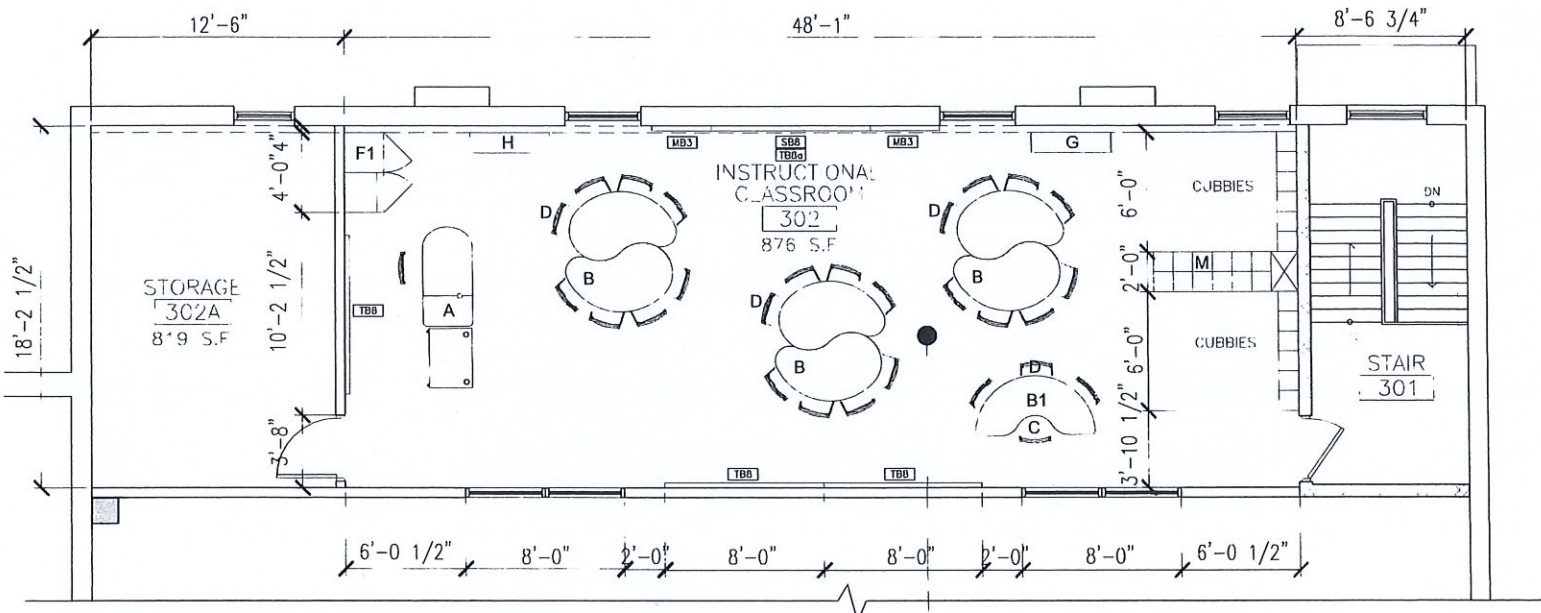
PROJECT TITLE:

COLLEGE ACHIEVE GREATER
ASBURY PARK CHARTER SCHOOL
Addition of Instructional
Classroom @ Mezzanine
3455 West Bangs Ave., Neptune, NJ 07753

SUBMISSION:

DATE	REVISIONS	REV

Date: 06.03.2022
Scale: AS SHOWN
Drawn by: BT
Checked by: LU
Job No.: 2221726
Drawing No.:

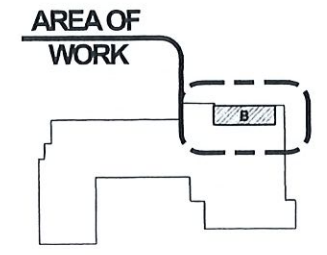


2 MEZZANINE ED SPECS FURNITURE LAYOUT PLAN
 A-301
 SCALE: 1/4" = 1'-0"
 LOCATION: MEZZANINE BALCONY

INSTRUCTIONAL CLASSROOM #302

ITEM	TYPE	ID	QTY	SF	TOTAL
TEACHER'S DESK, CHAIR & FILE CAB.	MOBILE	A	1	23	23 SF
TEACHER'S AIDE CHAIR	MOBILE	C	2	4	4 SF
STUDENT YINGYANG-SHAPED TABLE	MOBILE	B	6	13	78 SF
STUDENT STACKABLE CHAIR	MOBILE	D	13	81	81 SF
STUDENT KIDNEY SHAPED TABLE	MOBILE	B1	13	13	13 SF
LOCKABLE TEACHER'S CABIN	MOBILE		8	8	8 SF
BOOK SHELVES	FIXED	G	4	4	4 SF
OPEN SHELVINGS	FIXED	H	4	4	4 SF
STUDENT CUBBIES	FIXED	M	24	24	48 SF
TOTAL					263 SF
OCCUPANT @ 20 SF			13	260	520 SF
SF PROVIDED					876 SF
SF REQUIRED					783 SF
EXCESS SF					93 SF

KEY PLAN



NETTA ARCHITECTS
 237 West 25th Street
 Suite 1004
 New York, NY 10011
 Phone: 973.378.0086
 www.nettaarchitects.com
 CERTIFICATE OF AUTHORIZATION AC-438

NICHOLAS J. NETTA, AIA, NCARB
 NJ License No. AI 12541
 FRANCISCO J. MELENDEZ, SR., AIA
 NJ License No. AI 12110
 ROBERT E. McNAMARA, RA
 NJ License No. AI 997600
 LAURENCE K. UHER, AIA, LEED, AP
 NJ License No. AI 14394

These drawings, or parts thereof, may not be reproduced in any form, by any method, for any purpose, without the prior written consent from NICHOLAS J. NETTA, ARCHITECT.
 These drawings shall be used for the specific project location indicated within the Title Block, and shall not be used at any other location without prior consent from the ARCHITECT.

SHEET CONTENTS:

MEZZANINE FLOOR FURNITURE LAYOUT PLANS

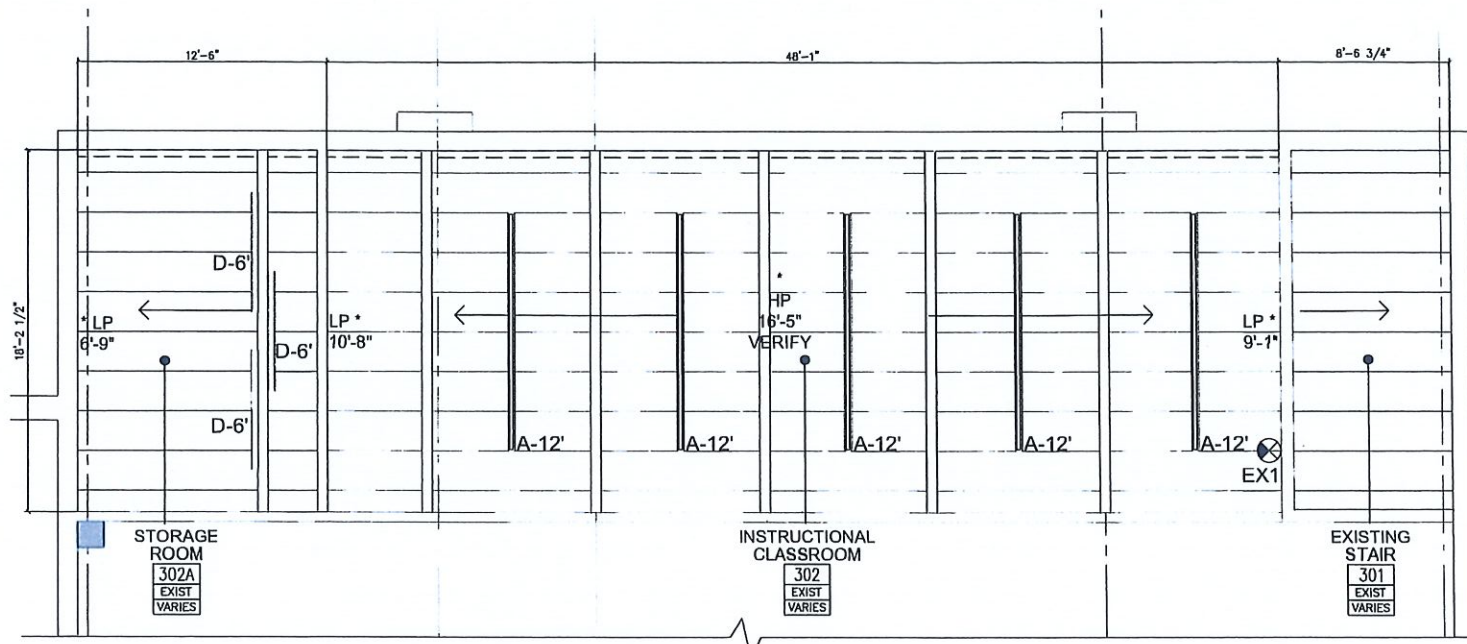
PROJECT TITLE:
COLLEGE ACHIEVE GREATER ASBURY PARK CHARTER SCHOOL
 Addition of Instructional Classroom @ Mezzanine
 3455 West Bangs Ave., Neptune, NJ 07753

SUBMISSION:

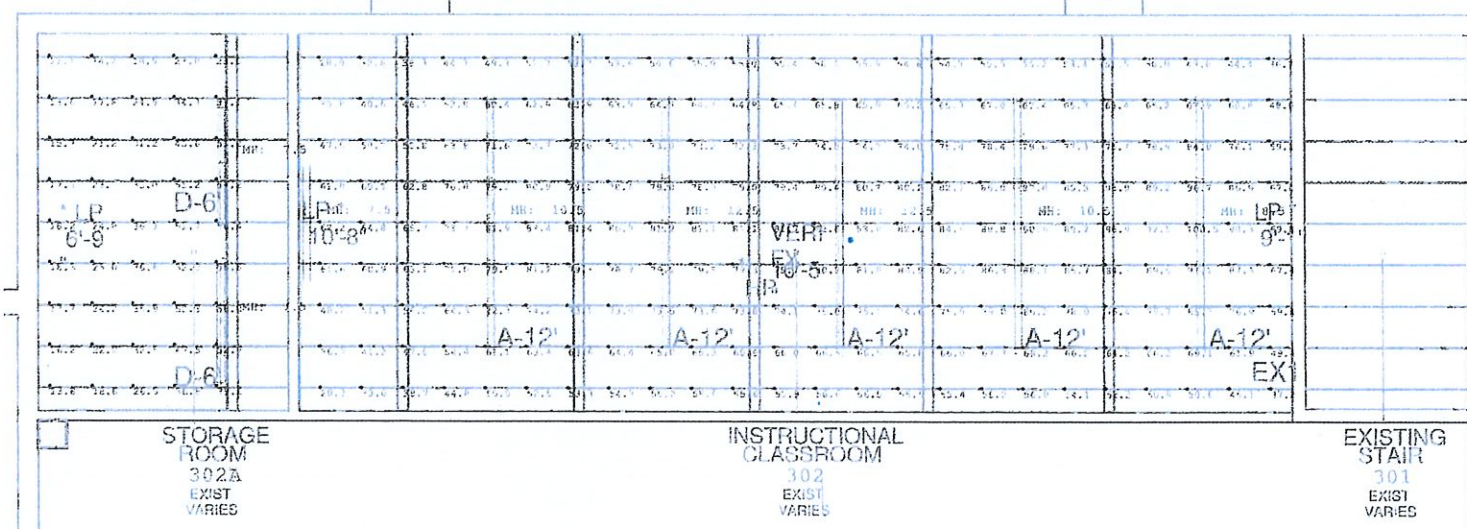
DATE	REVISIONS	REV

Date: 06.03.2022
 Scale: AS SHOWN
 Drawn by: BT
 Checked by: LU
 Job No.: 2221728
 Drawing No.:

A-301



1
A-401
MEZZANINE FLOOR REFLECTED CEILING PLAN
SCALE: 1/4"=1'-0"
LOCATION: MEZZANINE BALCONY



Symbol	Arrangement	Fixture Type	Fixture Description	Manufacturer	Catalog Number	CCT	LLF	Total Watts	Delivered Lumens	Filename
GROUP	A1-12'	LINEAR DIRECT INDIRECT PENDANT, 12 FOOT LENGTH	FINELITE, INC	HP-4-P-ID-12H-H-H-835-F-F-96LG-(VOLTS)-SC-(DIMMING)-(MOUNTING)-J9	0.900	170.4	18402	N.A.		
GROUP	A2-12'	LINEAR DIRECT INDIRECT PENDANT, 12 FOOT LENGTH	FINELITE, INC	HP-4-P-ID-12H-H-B-835-F-F-96LG-(VOLTS)-SC-(DIMMING)-(MOUNTING)-J9	0.900	140.7	15477	N.A.		
GROUP	B-12'	LINEAR SURFACE MOUNTED DIRECT, 12 FOOT LENGTH	FINELITE, INC.	FINELITE HP-4-SM-D-12H-H-835-F-96LG-(VOLTS)-SC-(DIMMING)-(CEILING)-FE-J9	0.900	84.89999	8646	N.A.		
GROUP	B 8'	LINEAR SURFACE MOUNTED DIRECT, 8 FOOT LENGTH	FINELITE, INC.	FINELITE HP-4-SM-D-8H-H-835-F-96LG-(VOLTS)-SC-(DIMMING)-(CEILING)-FE-J9	0.900	56.6	5764	N.A.		
Single	D	WALL MOUNTED LINEAR DIRECT INDIRECT WITH ASYMMETRIC UPLIGHT	FINELITE, INC	HP-4-WM-ID-6H-B-B-835-ASYM-F-96LG-(VOLTS)-SC-(DIMMING)-(MOUNTING)-J9	1.350	35.7	4221	HP-4-ID-4H-B-B-835-ASY-ITL89988.002.IES		

Label	CalcType	Units	Avg	Max	Min	PTSpcLr	PTSpcTb
120 INSTRUCTIONAL CLASSROOM_WorkplaneIlluminance	Fc		61.6	88.2	21.2	2	2
120A INSTRUCTIONAL CLASSROOM_WorkplaneIlluminance	Fc		61.8	88.2	21.4	2	2
302 INSTRUCTIONAL CLASSROOM_WorkplaneIlluminance	Fc		67.2	100.5	28.0	2	2
STORAGE ROOM_Workplane	Illuminance	Fc	31.9	58.0	11.1	2	2

Label	Area	Total Watts	LPD
120 INSTRUCTIONAL CLASSROOM_LPDIlluminance	804.2999	704.2999	0.9
120A INSTRUCTIONAL CLASSROOM_LPDIlluminance	804.2999	704.2999	0.9
302 INSTRUCTIONAL CLASSROOM_LPDIlluminance	888.6999	888.6999	1.0
STORAGE ROOM_LPDIlluminance	164.8	73.4	0.4

Label	Type	Clg Ht.	Description
120 INSTRUCTIONAL CLASSROOM	Polygon-Flat	10	
120A INSTRUCTIONAL CLASSROOM	Polygon-Flat	10	
302 INSTRUCTIONAL CLASSROOM	Rect-VentExtr	9	
STORAGE ROOM	Polygon-Flat	9	

NETTARCHITECTS
237 West 95th Street
Suite 1004
New York, NY 10025
Phone: 212.772.2890
www.nettarchitects.com
CERTIFICATE OF AUTHORIZATION AC-438

- NICHOLAS J. NETTA, AIA, NCARB
NJ License No. AJ 12541
- FRANCISCO J. MELENDEZ, SR., AIA
NJ License No. AJ 12118
- ROBERT E. McNAMARA, RA
NJ License No. AJ 997600
- LAURENCE K. UHER, AIA, LEED, AP
NJ License No. AJ 14394

These drawings, or parts thereof, may not be reproduced in any form, by any method, for any purpose, without the prior written consent from NICHOLAS J. NETTA, ARCHITECT.
These drawings shall be used for the specific project location indicated within the Title Block, and shall not be used at any other location without prior consent from the ARCHITECT.

MEZZANINE FLOOR REFLECTED CEILING PLANS

PROJECT TITLE:
COLLEGE ACHIEVE GREATER ASBURY PARK CHARTER SCHOOL
Addition of Instructional Classroom @ Mezzanine
3485 West Bangs Ave., Neptune, NJ 07763

SUBMISSION:

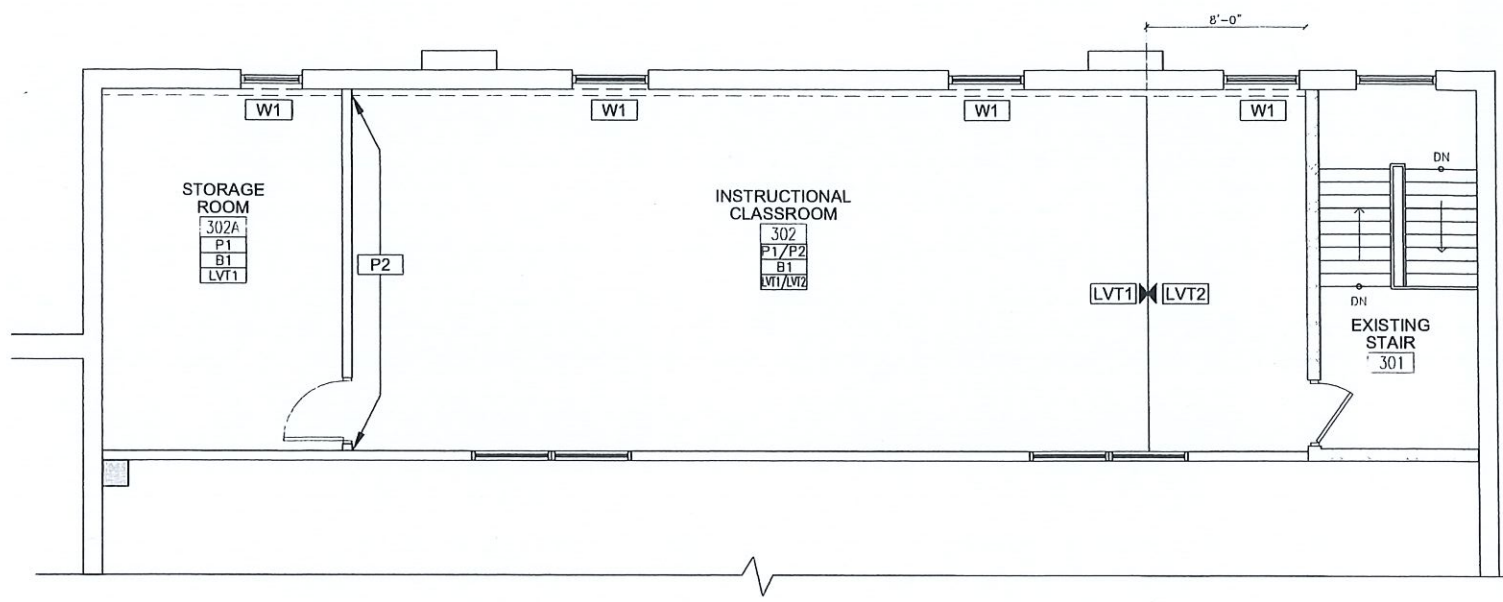
DATE REVISIONS REV

Date 06.03.2022
Scale AS SHOWN
Drawn by BT
Checked by LL
Job No. 2221726
Drawing No.

AREA OF WORK

KEY PLAN
PROJECT NORTH

A-401



2 MEZZANINE FLOOR FINISH PLAN
 SCALE: 1/4" = 1'-0"
 LOCATION: MEZZANINE BALCONY

NICHOLAS J. NETTA, AIA, NCARB
 NJ License No. AI 12541
 FRANCISCO J. MELENDEZ, SR., AIA
 NJ License No. AI 12118
 ROBERT E. McNAMARA, RA
 NJ License No. AI 997600
 LAURENCE K. UHER, AIA, LEED, AP
 NJ License No. AI 14394

These drawings, or parts thereof, may not be reproduced in any form, by any method, for any purpose, without the prior written consent from NICHOLAS J. NETTA, ARCHITECT.
 These drawings shall be used for the specific project location indicated within the Title Block, and shall not be used at any other location without prior consent from the ARCHITECT.

SHEET CONTENTS:

MEZZANINE FINISH PLAN & SCHEDULE

PROJECT TITLE:
 COLLEGE ACHIEVE GREATER ASBURY PARK CHARTER SCHOOL
 Addition of Instructional Classroom @ Mezzanine
 3455 West Bangs Ave., Neptune, NJ 07753

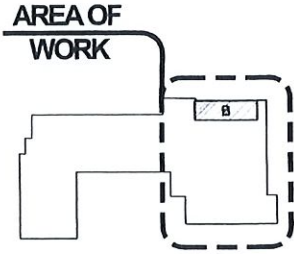
SUBMISSION:

DATE	REVISIONS	REV

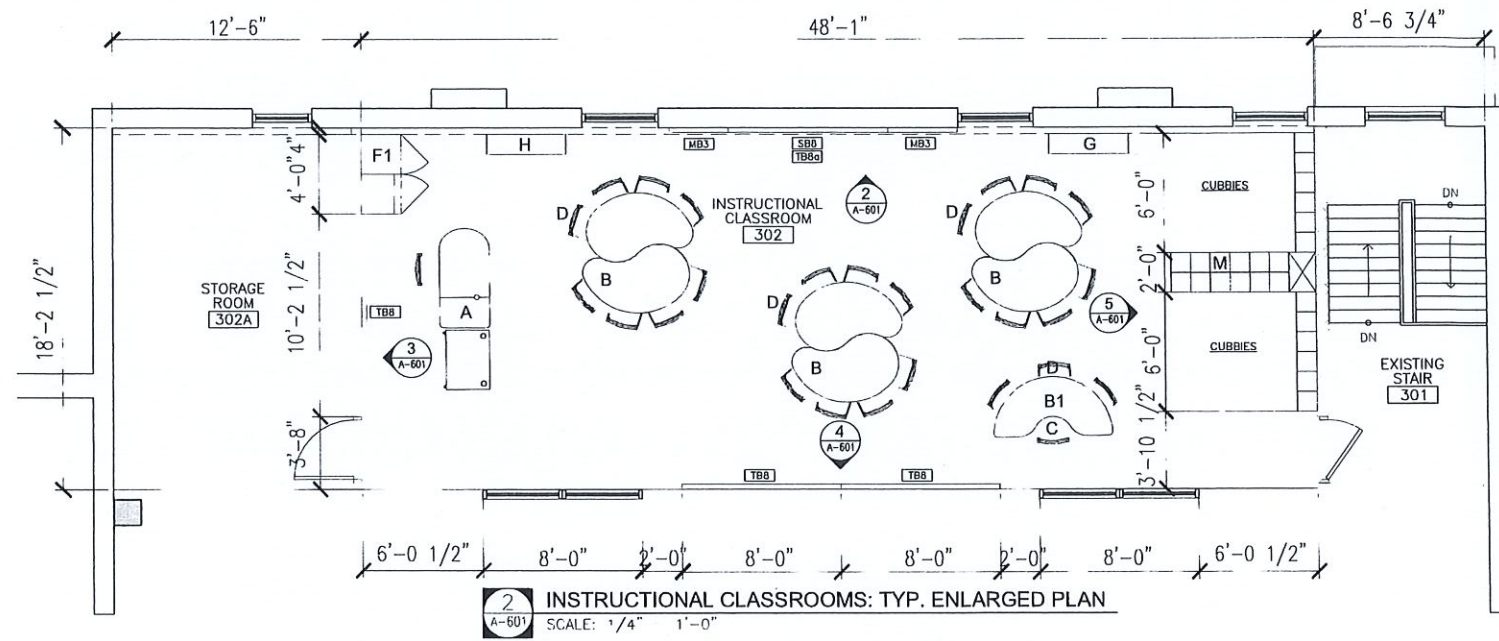
	MATERIAL	TYPE	DESCRIPTION	MANUFACTURER	CONTACT	REMARKS
FLOOR	LUXURY VINYL TILE	LVT1	18"x18" 40 MIL WEAR LAYER 2.5 MM OVERALL THICKNESS LUXURY VINYL TILE. COLLECTION: ACTIVE LINES. STYLE: CRISSCROSS. COLOR: POP (ALC401)	MANNINGTON	JENNA GATHMAN 732.233.4108	INSTALLATION METHOD: MONOLITHIC
		LVT2	18"x18" 40 MIL WEAR LAYER 2.5 MM OVERALL THICKNESS LUXURY VINYL TILE. COLLECTION: ACTIVE LINES. STYLE: CRISSCROSS. COLOR: ZOOM CHARCOAL (ALC307)	MANNINGTON	JENNA GATHMAN 732.233.4108	INSTALLATION METHOD: MONOLITHIC
BASE	RUBBER	B1	4" RUBBER WALL BASE COLOR: 179 STEEL	TARKETT	KAREN LEVEY-LYNCH 917.797.5697	
WALL	PAINT	P1	INTERIOR ACRYLIC LATEX PAINT WITH AIR PURIFYING TECHNOLOGY SATIN FINISH. COLOR: SW9136 LULLABY.	SHERWIN WILLIAMS	DOUGLAS J. DERKACS 908.309.8709	
		P2	INTERIOR ACRYLIC LATEX PAINT WITH AIR PURIFYING TECHNOLOGY SATIN FINISH. COLOR: SW9134 DELFT.	SHERWIN WILLIAMS	DOUGLAS J. DERKACS 908.309.8709	
CEILING	ACOUSTIC CEILING PANEL	ACT1	24"x24"x1" CALLA 9/16" SQUARE REGULAR. PRODUCT: 2824. COLOR: WHITE.	ARMSTRONG	ANNA KING 551.775.4364	
	SUSPENDED SYSTEM	SS1	9/16" SUPRAFINE EXPOSED TEE SYSTEM. COLOR: WHITE	ARMSTRONG	ANNA KING 551.775.4364	
	PAINT	CP1	INTERIOR ACRYLIC LATEX PAINT WITH AIR PURIFYING TECHNOLOGY FLAT FINISH. COLOR: SW7007 CEILING BRIGHT WHITE	SHERWIN WILLIAMS	DOUGLAS J. DERKACS 908.309.8709	GYPSUM BOARD CEILING AND SOFFITS, U.O.N.
DOOR & DOOR FRAME	SOLID WOOD DOORS	D1	ASPIRO SERIES. SPECIES: PLAIN SLICED WHITE MAPLE. STAIN COLOR BOURBON	MASONITE		
	METAL DOOR FRAME PAINT	DP1	INTERIOR ACRYLIC LATEX PAINT WITH AIR PURIFYING TECHNOLOGY SEMI GLOSS FINISH. COLOR: SW9134 DELFT.	SHERWIN WILLIAMS	DOUGLAS J. DERKACS 908.309.8709	
MIL/WORK	PLASTIC & METAL LAMINATE	PL1	8240-58 LIQUID GLASS. MATTE FINISH	FORMICA	DIANE MARROCCO 609.477.4900	
WINDOW TREATMENT	WINDOW SHADE & DRAPERY	W1	MECHO/SX MANUAL SHADES SYSTEM. FABRIC: SOHO 1600 SERIES (3% OPEN). COLOR: 1619 SILVER BIRCH	MECHO SHADE	JERRY FELDMAN 732.991.1395	

LEGEND:
 XXXX ← ROOM NAME
 123 ← ROOM NUMBER
 W15 ← WALL FINISH
 B1 ← WALL BASE FINISH
 FT1 ← FLOOR FINISH
 ← EXTENT OF WALL FINISH

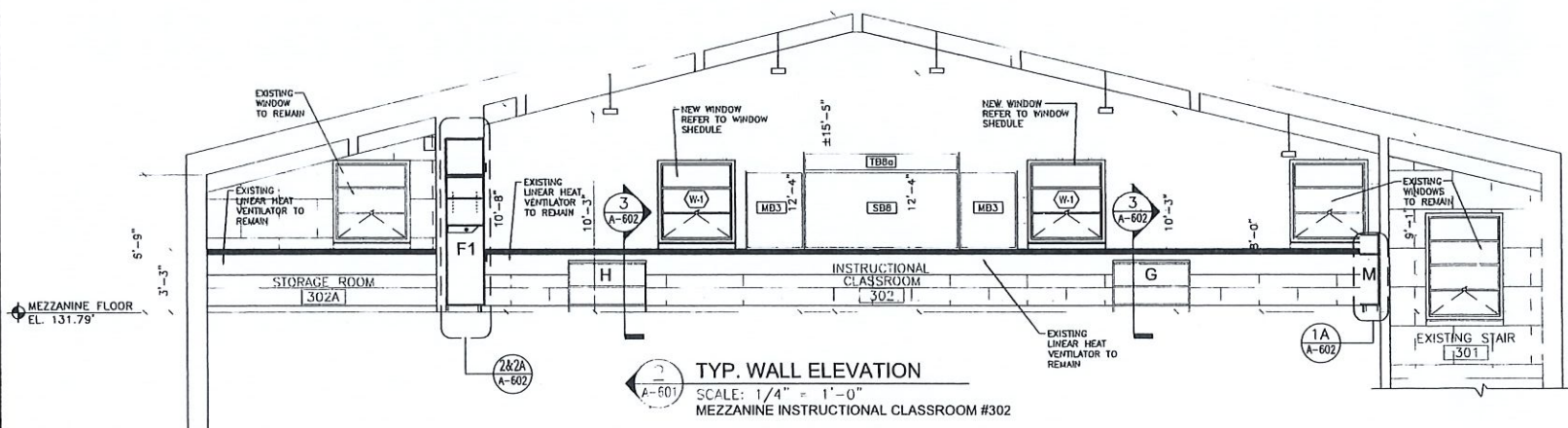
KEY PLAN



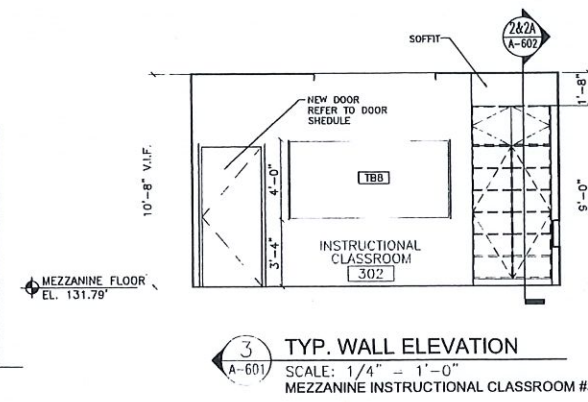
A-501



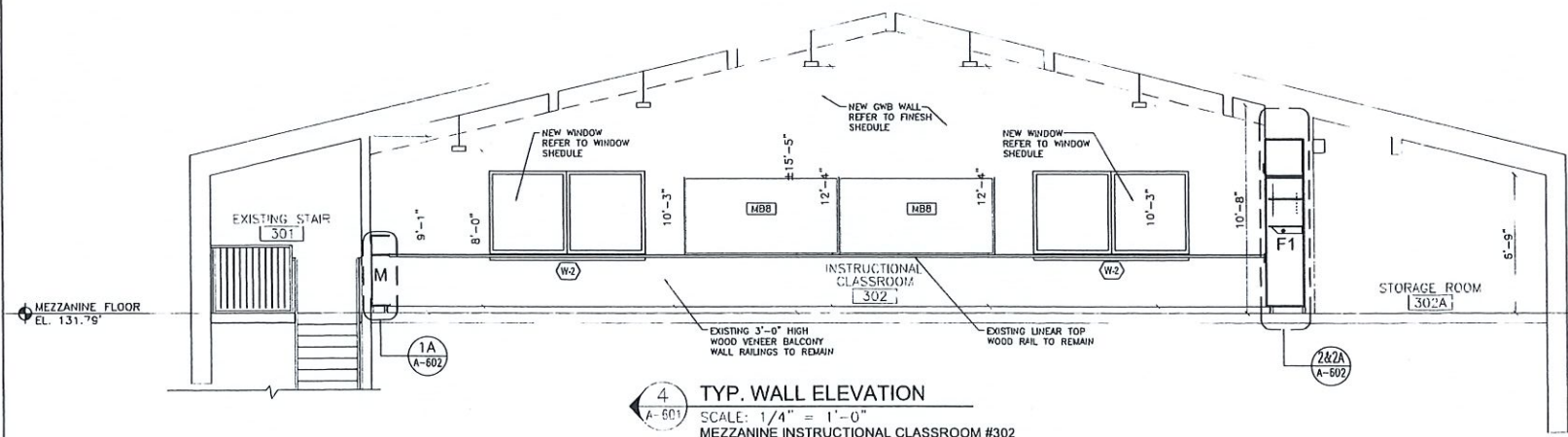
2 INSTRUCTIONAL CLASSROOMS: TYP. ENLARGED PLAN
SCALE: 1/4" = 1'-0"



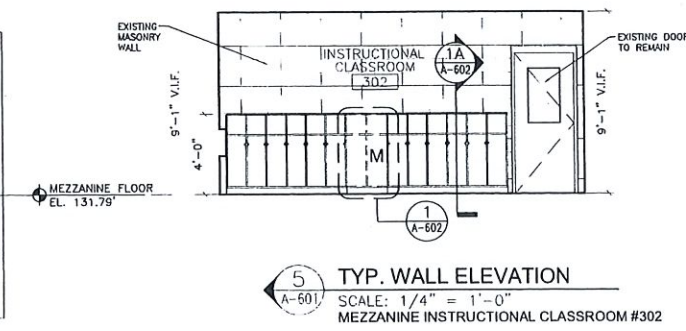
2 TYP. WALL ELEVATION
SCALE: 1/4" = 1'-0"
MEZZANINE INSTRUCTIONAL CLASSROOM #302



3 TYP. WALL ELEVATION
SCALE: 1/4" = 1'-0"
MEZZANINE INSTRUCTIONAL CLASSROOM #302



4 TYP. WALL ELEVATION
SCALE: 1/4" = 1'-0"
MEZZANINE INSTRUCTIONAL CLASSROOM #302



5 TYP. WALL ELEVATION
SCALE: 1/4" = 1'-0"
MEZZANINE INSTRUCTIONAL CLASSROOM #302

NETTA ARCHITECTS
 237 West 85th Street
 10th Floor
 New York, NY 10024
 Phone: 212.772.2880
 www.netta-architects.com
CERTIFICATE OF AUTHORIZATION AC-438

NICHOLAS J. NETTA, AIA, NCARB
 NJ License No. A1 12541
 FRANCISCO J. MELENDEZ, SR., AIA
 NJ License No. A1 12118
 ROBERT E. McHAMARA, RA
 NJ License No. A1 997600
 LAURENCE K. UHER, AIA, LEED, AP
 NJ License No. A1 14394

These drawings, or parts thereof, may not be reproduced in any form, by any method, for any purpose, without the prior written consent from NICHOLAS J. NETTA, ARCHITECT.

These drawings shall be used for the specific project location indicated within the Title Block, and shall not be used at any other location without prior consent from the ARCHITECT.

SHEET CONTENTS:

MEZZANINE FLOOR MILLWORK ELEVATIONS & DETAILS

PROJECT TITLE:

COLLEGE ACHIEVE GREATER ASBURY PARK CHARTER SCHOOL
 Addition of Instructional Classroom @ Mezzanine
 3455 West Bangs Ave., Neptune, NJ 07753

SUBMISSION:

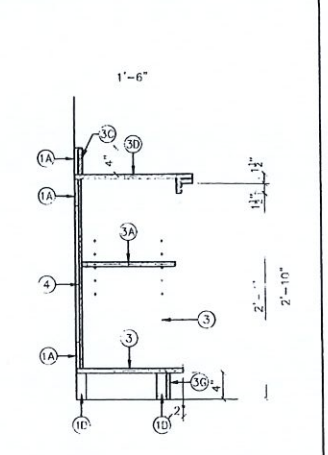
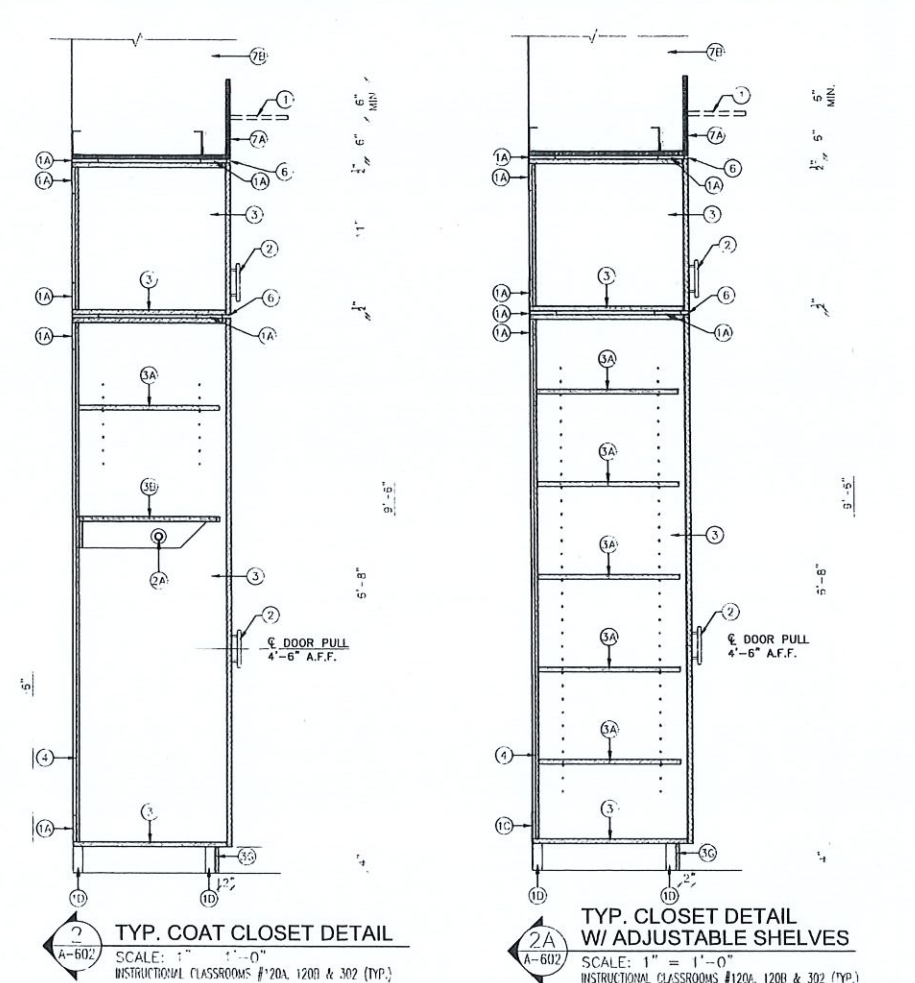
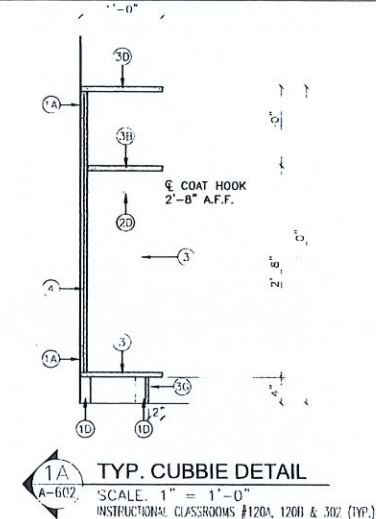
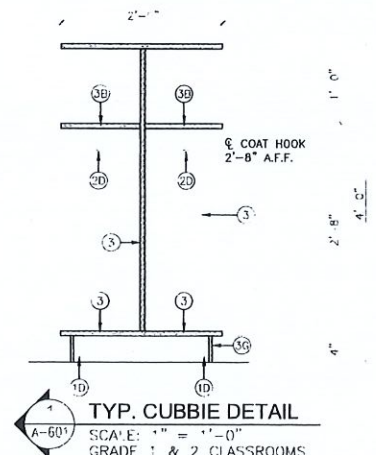
DATE	REVISIONS	REV

Date	06.03.2022
Scale	AS SHOWN
Drawn by	BT
Checked by	LU
Job No.	2221728
Drawing No.	

A-601

MILLWORK DETAILS

(SCALE: 1" = 1'-0")



KEYNOTES THIS DRAWING

- 1) SCHED. CEILING
- 1A) WOOD SHIM
- 1B) WOOD BLOCKING SUPPORT
- 1C) POWER/DATA/VOICE OUTLETS. SEE ELECT'L. DWGS.
- 1D) WOOD BLOCKING SUPPORT
- 2) CABINET DOOR PULL HAFELE CAT. #117.05.600 (MATTE FINISH)
- 2A) 1/2" CHROME PLATED COAT HANGER ROD
- 2B) SINK AND FAUCE. SEE PLUMBING DWGS.
- 2C) SPACE IN FRONT AND BELOW THIS LINE SHALL REMAIN CLEAR FOR ADA KNEE CLEARANCE W/ UNDERSINK PROTECTIVE COATING LAVGUARD 2 BY TRUEBRO ON DRAIN, TRAP, AND ANGLE STOPS
- 2D) S/STL. COAT HOOKS
- 2E) GROMMET (MODEL #HAF-631-46-602) Hafele 2-3/8" (61mm) 2-Piece Metal Grommet (Satin Nickel)
- 2F) DRAWER SLIDES HAFELE CAT. NO. ACCURIDE 7434 (MATTE FINISH)
- 3) 3/4" THK. PLYWOOD WITH PLASTIC LAMINATE ON ALL EXPOSED SIDES.
- 3A) 3/4" THK. PLYWOOD ADJUSTABLE SHELVINGS WITH PLASTIC LAMINATE, TYP. PROVIDE VINYL EDGES AND S/STL PEGS.
- 3B) 3/4" THK. PLYWOOD SHELF WITH PLASTIC LAMINATE. PROVIDE VINYL EDGES ON EXPOSED EDGES.
- 3C) 3/4" THK. PLYWOOD BACKSPLASH WITH PLASTIC LAMINATE. PROVIDE VINYL EDGES ON EXPOSED EDGES.
- 3D) 3/4" THK. PLYWOOD COUNTERTOP WITH PLASTIC LAMINATE ON ALL EXPOSED SIDES.
- 3E) 3/4" THK. PLYWOOD REMOVABLE ACCESS PANEL W. PLASTIC LAM. ON ALL SIDES (PROVIDE ALUM. "Z" CLIPS ATTACHMENT)
- 3F) 3/4" THK. PLYWOOD DRAWERS WITH PLASTIC LAMINATE ON ALL EXPOSED SIDES. PROVIDE MTL. SLIDERS ON BOTH SIDES OF DRAWERS
- 3G) 3/4" THK. PLYWOOD BASE WITH PLASTIC LAMINATE. PROVIDE ON EXPOSED SIDES ONLY
- 4) 1/2" THK. PLYWOOD WITH PLASTIC LAMINATE ON ALL EXPOSED SIDES.
- 5) SOLID SURFACE COUNTERTOP AND BACKSPLASH
- 6) 1/2" x 1/2" WOOD REVEAL
- 7) 8" GWB ON 6" MTL STUD @ 16" O.C.
- 7A) 8" GWB ON 3 3/8" MTL STUD @ 16" O.C.
- 7B) 3 3/8" MTL STUD @ 16" O.C. SECURED TO STRUCTURE ABOVE
- 7C) 1/4" THK. PLYWOOD WITH PLASTIC LAMINATE
- 7D) 3/4" THK. PLYWOOD CABINET INTERIOR WITH PLASTIC LAMINATE

NETTA ARCHITECTS
108A Franklin 20 West
Morristown, NJ 07960
Phone: 973.372.0068
www.nettaarchitects.com

237 West 38th Street
Suite 1004
New York, NY 10004
Phone: 212.777.2090

CERTIFICATE OF AUTHORIZATION AC-438

NICHOLAS J. NETTA, AIA, NCARB
NJ License No. AI 12541

FRANCISCO J. MELENDEZ, SR., AIA
NJ License No. AI 12118

ROBERT C. McNAMARA, RA
NJ License No. AI 997600

LAURENCE K. UHER, AIA, LEED, AP
NJ License No. AI 14394

These drawings, or parts thereof, may not be reproduced in any form, by any method, for any purpose, without the prior written consent from NICHOLAS J. NETTA, ARCHITECT.

These drawings shall be used for the specific project location indicated within the Title Block, and shall not be used at any other location without prior consent from the ARCHITECT.

SHEET CONTENTS:

MILLWORK DETAILS

PROJECT TITLE:
COLLEGE ACHIEVE GREATER ASBURY PARK CHARTER SCHOOL
Addition of Instructional Classroom @ Mezzanine
3455 West Bangs Ave., Neptune, NJ 07753

SUBMISSION:

DATE	REVISIONS	REV

Date:	06.03.2022
Scale:	AS SHOWN
Drawn by:	BT
Checked by:	LU
Job No.:	2221726
Draw-ing No.:	

A-602