

# EXHIBIT B – Mezzanine Plans

3455 W Bangs – 2<sup>nd</sup> Floor Above Gym

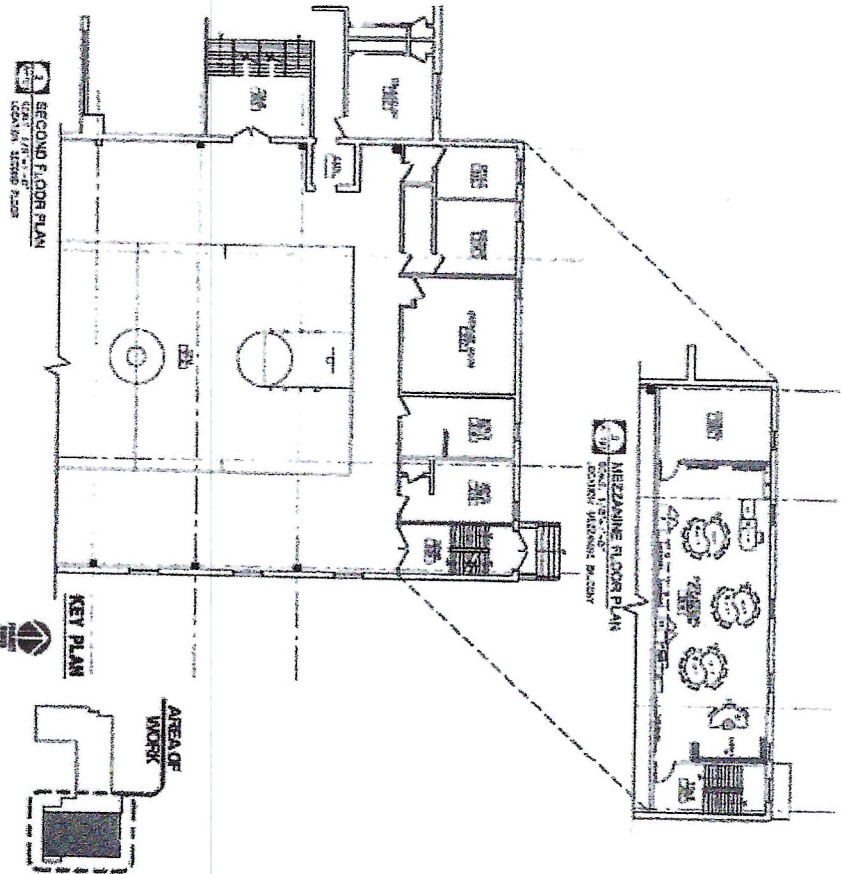
Netta Architects

Multi-Purpose Room

Plan Set Sheets A-000 thru A-602

Pending Plan Review & Permit

See Key Plan Sheet A-000 for Location



Date: 04-18-2022



College Achieve Greater  
Asbury Park Charter School  
Academy of Instructional Classrooms  
3455 West Bangs Avenue, Neptune, NJ 07759  
Project #2221728



NETTARCHITECTS  
1200 ROUTE 28 WEST, SUITE 300, FREEHOLD, NEW JERSEY 07728  
TEL: 732.329.3399 FAX: 732.329.3311



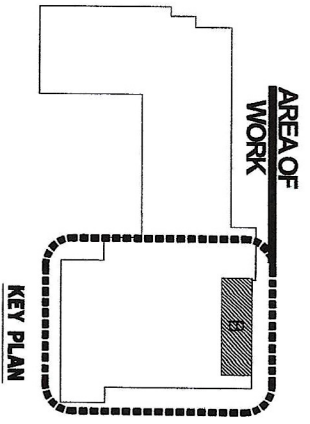
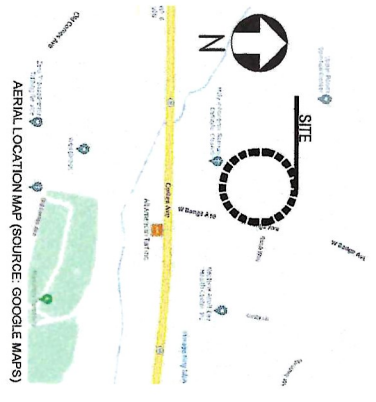
# COLLEGE ACHIEVE GREATER ASBURY PARK CHARTER SCHOOL ADDITION OF INSTRUCTIONAL CLASSROOM @ MEZZANINE

3455 West Bangs Avenue, Neptune, New Jersey 07753

**PROJECT DESCRIPTION:**  
THE PROPOSED PROJECT WILL INCLUDE THE CONVERSION OF EXISTING MEZZANINE FLOOR TO AN INSTRUCTIONAL CLASSROOM & STORAGE ROOM.

- SCOPE OF WORK:**
1. PROVIDE ENGINEERING SUPPORT IN THE REQUIRED MECHANICAL, ELECTRICAL & FIRE PROTECTION TO THE CONVERSION OF EXISTING MEZZANINE INSTRUCTIONAL CLASSROOM & STORAGE ROOM.
  2. INSTALLATION OF NEW GAS-FIRED HEATING, DIRECT EXPANSION COOLING AIR-HANDLING UNIT IN THE MEZZANINE STORAGE ROOM.
  3. PROVIDE NEW UNIT SET IN A DRAIN PAN WITH OVERFLOW SENSOR.
  4. PROVIDE NEW SUPPLY, RETURN & OUTSIDE AIR DUCTWORK TO THE NEW CLASSROOM SPACE.
  5. PROVIDE A PROGRAMMABLE THERMOSTAT TO OPERATE THE NEW AIR-HANDLING UNIT.
  6. LOCATE THE REMOTE AIR-COOLED CONDENSING UNIT AT GRADE LEVEL ON A CONCRETE PAD.
  7. REMOVE EXISTING PROPELLER EXHAUST FANS FOR THE GYMNASIUM & PROVIDE NEW EXHAUST FANS & INTERLOCKED WITH THE CURRENT CONTROLS.
  8. PROVIDE CARBON MONOXIDE DETECTION IN THE MEZZANINE INSTRUCTIONAL CLASSROOM & STORAGE ROOM TO MEET THE CODE REQUIREMENT.

**LOCATION MAP**



**NETTAARCHITECTS**  
1064 Route 22 West  
Mountainside, NJ 07092  
Phone: 973.379.8008  
www.nettaarchitects.com

237 West 35th Street  
New York, NY 10004  
Phone: 212.777.2090  
CERTIFICATE OF AUTHORIZATION AC-438

DRAWING INDEX	
DWG. NO.	SHEET CONTENTS
A-000	COVER SHEET & DRAWING INDEX
A-101	ARCHITECTURAL
A-101	MEZZANINE FLOOR PLAN
A-201	MEZZANINE FLOOR PLAN, ROOM NUMBER, TYPES & SCHEDULE
A-301	MEZZANINE FURNITURE LAYOUT PLAN
A-401	MEZZANINE FLOOR REFLECTED CEILING PLANS
A-501	MEZZANINE FLOOR FINISH PLANS
A-601	MELTWORK ELEVATIONS
A-602	MELTWORK DETAILS



**PROJECT TITLE:**  
COLLEGE ACHIEVE GREATER  
ASBURY PARK CHARTER SCHOOL  
ADDITION OF INSTRUCTIONAL  
CLASSROOM @ MEZZANINE

**SUBMISSION:**  
3455 West Bangs Avenue, Neptune, NJ 07753

**DATE:** REVISIONS: 1/20

**COVER SHEET & DRAWING INDEX**

**SHEET CONTENTS:**

These drawings are the property of Netta Architects, Inc. and are to be used only for the project and location specified herein. No part of these drawings may be reproduced, stored in a retrieval system, or transmitted in any form or by any means, electronic, mechanical, photocopying, recording, or by any information storage and retrieval system, without prior written consent from Netta Architects, Inc.

NETTAARCHITECTS  
1064 Route 22 West  
Mountainside, NJ 07092  
Phone: 973.379.8008  
www.nettaarchitects.com

237 West 35th Street  
Suite 1004  
New York, NY 10004  
Phone: 212.777.2090  
CERTIFICATE OF AUTHORIZATION AC-438

**A-000**

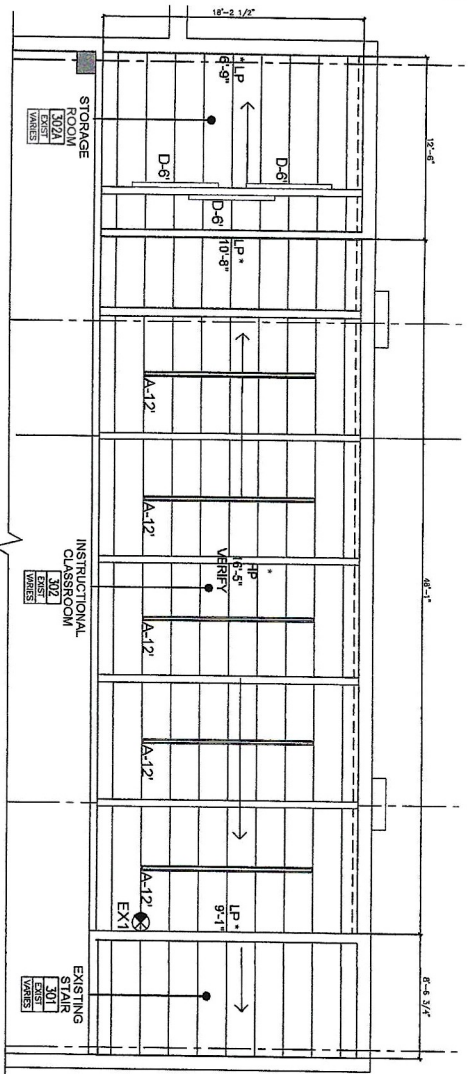




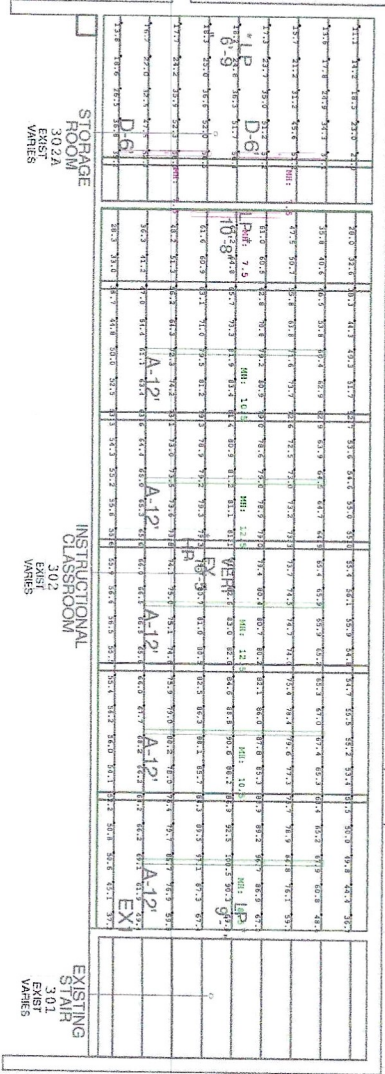








1 SCALE: 1/4"=1'-0"  
LOCATION: MEZZANINE BALCONY



LUMINAIRE SCHEDULE - REFERS TO LUMINAIRE FIXTURE CUTSHEETS FOR COMPLETE FIXTURE NUMBERS

Symbol	Arrangement	Fixture Type	Fixture Description	Manufacturer	Catalog Number	CCT	LFP	Total Watts	Delivered Lumens	Fluorescence
GROUP	A1-12	LINEAR DIRECT INDIRECT PENDANT, 12 FOOT LENGTH	PNLITE INC.	HP-4-P-D-IR-H-HS-F-8L-G-VOL-TS-SC	0.900	173.4	1602	N.A.		
GROUP	A2-12	LINEAR DIRECT INDIRECT PENDANT, 12 FOOT LENGTH	PNLITE INC.	HP-4-D-IR-H-HS-F-8L-G-VOL-TS-SC	0.800	140.7	1577	N.A.		
GROUP	B-12	LINEAR SURFACE MOUNTED DIRECT, 12 FOOT LENGTH	PNLITE INC.	DMANNO(MOUNTING)A-J	0.900	84.8989	856	N.A.		
GROUP	B-5	LINEAR SURFACE MOUNTED DIRECT, 5 FOOT LENGTH	PNLITE INC.	DMANNO(CEILING)E-B	0.500	56.5	574	N.A.		
Single	D	WALL MOUNTED LINEAR DIRECT INDIRECT WITH ASYMMETRIC LIGHT	PNLITE INC.	DMANNO(CEILING)E-B	1.250	35.7	421	N.A.		

CALCULATION SUMMARY

Label	CalcType	Units	Avg	Max	Min	Project	Project
120 INSTRUCTIONAL CLASSROOM, Workshop/Performance	Fc	61.8	88.2	21.2	2	2	2
120A INSTRUCTIONAL CLASSROOM, Workshop/Performance	Fc	61.8	88.2	21.4	2	2	2
302 INSTRUCTIONAL CLASSROOM, Workshop/Performance	Fc	67.2	100.5	23.0	2	2	2
STORAGE ROOM, LFP	ILLUMINANCE	Fc	31.9	58.0	11.1	2	2

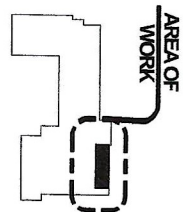
LFP AREA SUMMARY

Label	Area	Total Watts	LFP
120 INSTRUCTIONAL CLASSROOM	704.2989	704.2989	0.9
120A INSTRUCTIONAL CLASSROOM	704.2989	704.2989	0.9
302 INSTRUCTIONAL CLASSROOM	898.6989	898.6989	1.0
STORAGE ROOM LFP	164.8	73.4	0.4

ROOM SUMMARY

Label	Type	Cg Ht.	Description
120 INSTRUCTIONAL CLASSROOM	Polygon-Far	10	
120A INSTRUCTIONAL CLASSROOM	Polygon-Far	10	
302 INSTRUCTIONAL CLASSROOM	Polygon-Far	9	
STORAGE ROOM	Polygon-Far	9	

KEY PLAN



A-401

**NETTARCHITECTS**  
 1084 Route 22 West  
 Mount Pleasant, NY 10762  
 Phone: 878.376.0006  
 Fax: 878.376.0000  
 WWW.NETTARCHITECTS.COM  
 CERTIFICATE OF AUTHORIZATION AC-438

PROJECT TITLE: COLLEGE AND GREATER ASBURY PARK CHARTERS SCHOOL, Addition of Instructional Classroom @ Mezzanine, 3405 Westcamp Ave., Ithaca, NY 14853

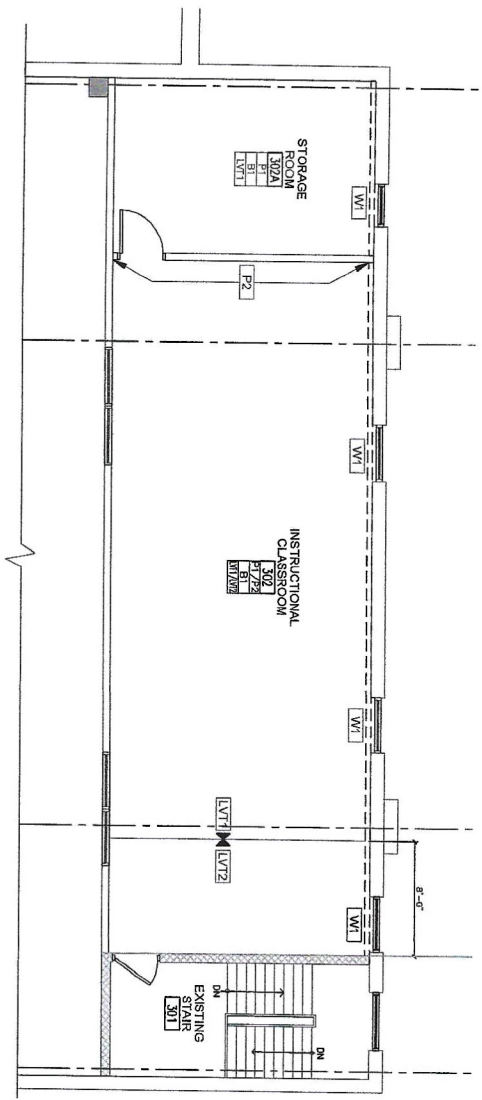
SUBMISSION: DATE: REVISIONS: 1 2

DESIGNER: NETTARCHITECTS  
 ARCHITECT: NETTARCHITECTS  
 CHECKED BY: LU  
 DATE: 2/27/2018

100%  
 90%  
 80%  
 70%  
 60%  
 50%  
 40%  
 30%  
 20%  
 10%  
 0%

These drawings are the property of the Architect and shall remain the property of the Architect. These drawings shall not be used for any other project without the written consent of the Architect. The Architect shall not be responsible for any errors or omissions on these drawings. The Architect shall not be responsible for any delays or interruptions in the construction of the project. The Architect shall not be responsible for any damages or injuries to persons or property. The Architect shall not be responsible for any costs or expenses incurred by the client. The Architect shall not be responsible for any claims or lawsuits. The Architect shall not be responsible for any other matters. The Architect shall not be responsible for any other matters.



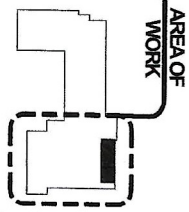


**2** MEZZANINE FLOOR FINISH PLAN  
 SCALE: 1/4"=1'-0"  
 LOCATION: MEZZANINE BALCONY

FINISH SCHEDULE			
MATERIAL	TYPE	DESCRIPTION	REMARKS
LUQUON WHITE TILE	LVT1	3/8" X 6" X 12" POLISHED PORCELAIN TILE SET IN 1/4" BED OVER 1/2" GYP BOARD. FINISH WITH POLISHED POLYURETHANE COATING.	MANUFACTURER: BERNI GATTI/MAI CONTACT: 732-841-1111
FLOOR	LVT2	3/8" X 6" X 12" POLISHED PORCELAIN TILE SET IN 1/4" BED OVER 1/2" GYP BOARD. FINISH WITH POLISHED POLYURETHANE COATING.	MANUFACTURER: BERNI GATTI/MAI CONTACT: 732-841-1111
WALL	W1	1/2" RUBBER WALL PANEL COLOR: 19 STEEL.	MANUFACTURER: SHERWIN WILLIAMS CONTACT: 800-368-3838
BASE	P1	INTERIOR ACRYLIC LAMINATE FINISH WITH PURPURING TECHNOLOGY.	MANUFACTURER: SHERWIN WILLIAMS CONTACT: 800-368-3838
WALL	P2	INTERIOR ACRYLIC LAMINATE FINISH WITH PURPURING TECHNOLOGY.	MANUFACTURER: SHERWIN WILLIAMS CONTACT: 800-368-3838
CEILING	CE1	3/8" X 6" X 12" POLISHED PORCELAIN TILE SET IN 1/4" BED OVER 1/2" GYP BOARD. FINISH WITH POLISHED POLYURETHANE COATING.	MANUFACTURER: BERNI GATTI/MAI CONTACT: 732-841-1111
DOOR & DOOR FRAME	DF1	ALUMINUM FRAME WITH GLASS PANEL. FINISH WITH POLISHED POLYURETHANE COATING.	MANUFACTURER: SHERWIN WILLIAMS CONTACT: 800-368-3838
MILLWORK	M1	3/4" X 6" X 12" POLISHED PORCELAIN TILE SET IN 1/4" BED OVER 1/2" GYP BOARD. FINISH WITH POLISHED POLYURETHANE COATING.	MANUFACTURER: BERNI GATTI/MAI CONTACT: 732-841-1111
WINDOW TREATMENT	WT1	MICROSHIM LAMINATE SHIMAZI SYSTEM. FINISH WITH POLISHED POLYURETHANE COATING.	MANUFACTURER: SHERWIN WILLIAMS CONTACT: 800-368-3838

**LEGEND:**  
 XXXX → ROOM NUMBER  
 XXXX → WALL FINISH  
 XXXX → DOOR FINISH  
 XXXX → MILLWORK  
 XXXX → WINDOW FINISH

**KEY PLAN**



A-501

**NETTAARCHITECTS**  
 1084 Route 22 West  
 MountAiries, NJ 07960  
 Phone: 973.378.0000  
 www.nettaarchitects.com  
 CERTIFICATE OF AUTHORIZATION AC-438

287 West 59th Street  
 Suite 1004  
 New York, NY 10004  
 Phone: 212.777.0900

**MEZZANINE FINISH PLAN & SCHEDULE**

**PROJECT TITLE:**  
 COLLEGE-BIGGARE GREATER  
 ASBURY PARK-HARTER SCHOOL  
 Addition of Instructional  
 Classroom @ Mezzanine  
 3485 Westbury Ave., Asbury Park, NJ 07705

**SUBMISSION:**

**DATE:** 08/13/2022  
**REVISIONS:**

**DESIGNED BY:** ET  
**CHECKED BY:** LI  
**DATE:** 2/27/2022

**NOTICE:**  
 This drawing is the property of Netta Architects and shall remain the property of Netta Architects. It is to be used only for the project and location specified herein. No part of this drawing shall be used for any other project without the written consent of Netta Architects.

**NETTA ARCHITECTS**  
 FRANCISCO J. WELTZER, SR., AIA  
 NJ License No. A1 12118  
 ROBERT E. LUDWIG, RA  
 NJ License No. A1 12119  
 LUISERRE K. URSO, RA, LEED, AP  
 NJ License No. A1 14324





