



KEY MAP
1" = 2000'

GENERAL NOTES

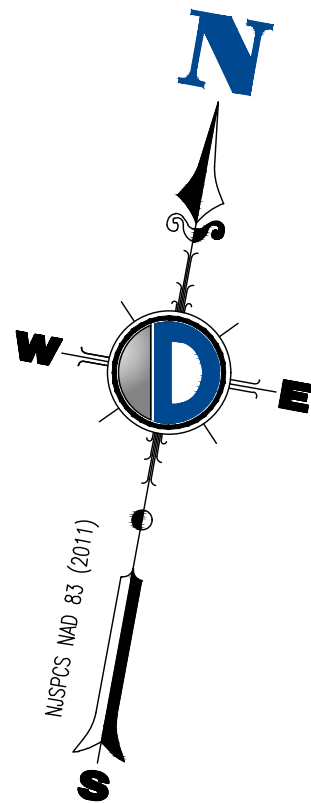
- THIS IS NOT A BOUNDARY SURVEY. THE LOT AND BLOCK NUMBERS SHOWN ARE BASED ON THE TAX MAP OF THE TOWNSHIP OF NEPTUNE, MONMOUTH COUNTY, NEW JERSEY, SHEET NO. 5.
- HORIZONTAL DATUM - NAD 83 (2011), BASED ON GPS FIELD OBSERVATION PERFORMED BY DYNAMIC SURVEY ON AUGUST 28, 2024, UTILIZING THE LEICA RIK CORRS NETWORK.
- VERTICAL DATUM - NAD 83 (2011), BASED ON GPS FIELD OBSERVATIONS PERFORMED BY DYNAMIC SURVEY ON AUGUST 28, 2024, UTILIZING THE LEICA RIK CORRS NETWORK.
- FIELD WORK PERFORMED BY DYNAMIC SURVEY ON AUGUST 28, 2024.
- SUBSURFACE AND ENVIRONMENTAL CONDITIONS WERE NOT EXAMINED OR CONSIDERED AS PART OF THIS SURVEY. NO STATEMENT IS MADE CONCERNING THE EXISTENCE OF UNDERGROUND OR OVERHEAD CONDITIONS THAT MAY AFFECT THE USE OR DEVELOPMENT OF THIS TRACT. PROPERTY IS SUBJECT TO SUB-SURFACE CONDITIONS AND/OR ENCROACHMENTS NOT DISCLOSED BY PUBLIC RECORD, IF ANY.
- DYNAMIC SURVEY MAKES NO GUARANTEES THAT ALL UTILITIES ARE SHOWN AND THAT THE SHOWN UTILITIES MAY NOT COMPRISE ALL UTILITIES EITHER IN SERVICE OR ABANDONED RELATED TO THE SITE. ANY LOCATIONS SHOWN ARE APPROXIMATE BASED ON VISIBLE STRUCTURES OR UTILITY MARKOUT UNLESS NOTED OTHERWISE. ALL UTILITY LOCATIONS MUST BE VERIFIED WITH THE PROPER UTILITY COMPANIES PRIOR TO ADDITIONAL DESIGN, EXCAVATION OR CONSTRUCTION. CONTACT UTILITIES TOLL FREE 1-800-272-1000.
- THE COLLECTION AND DEPICTION OF THE SUBSURFACE UTILITIES SHOWN HEREON ARE IN ACCORDANCE WITH STANDARD UTILITY QUALITY LEVEL GUIDELINES AS OUTLINED BELOW AND DEPICTED ON THE SURVEY BY LINE TYPES AS SHOWN IN THE DRAWING LEGEND.

UTILITY QUALITY LEVEL A: HORIZONTAL AND VERTICAL LOCATION OF UTILITIES OBTAINED BY THE ACTUAL EXPOSURE (OR VERIFICATION OF PREVIOUSLY EXPOSED AND SURVEYED UTILITIES) AND SUBSEQUENT MEASUREMENT OF SUBSURFACE UTILITIES, USUALLY AT A SPECIFIC POINT. MINIMALLY INTRUSIVE EXCAVATION EQUIPMENT OR OTHER METHOD(S).

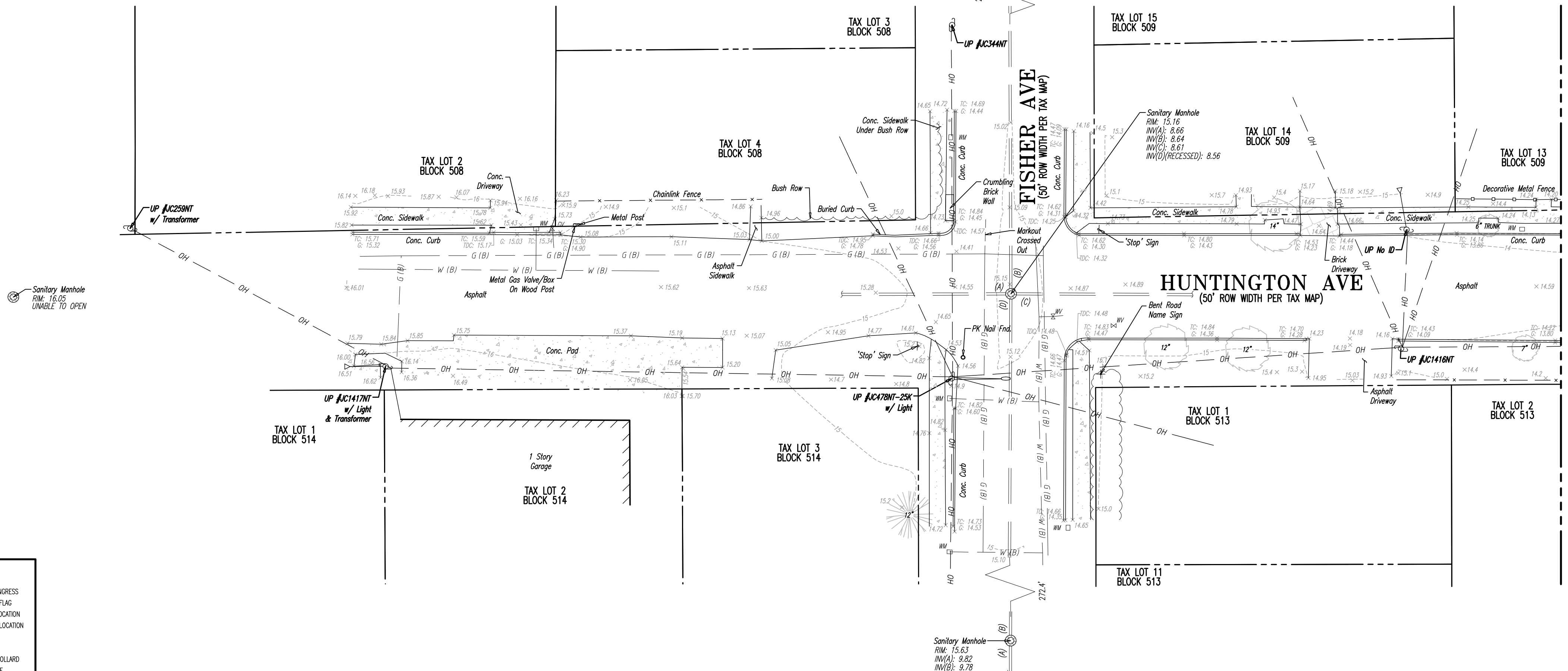
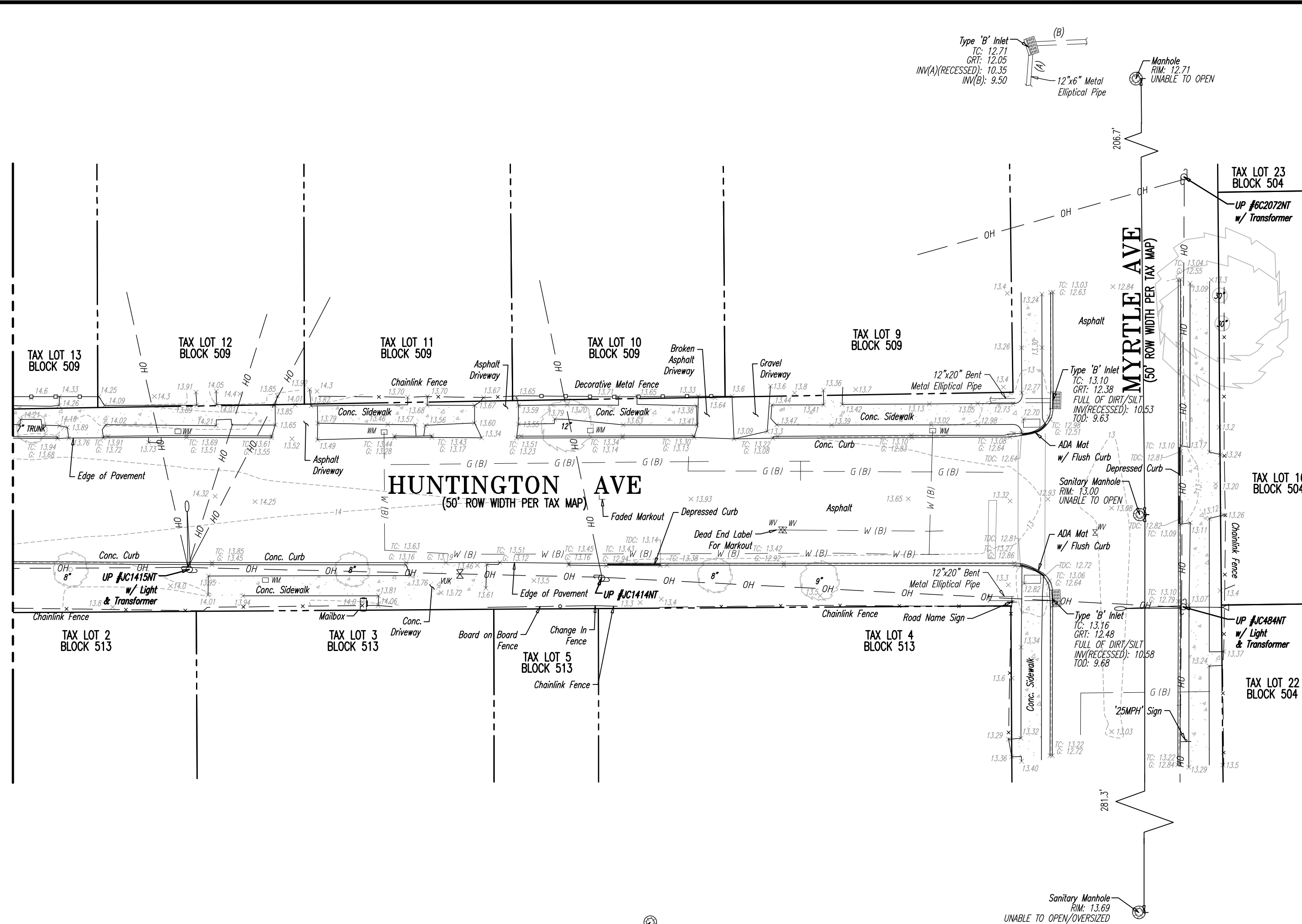
UTILITY QUALITY LEVEL B: INFORMATION OBTAINED THROUGH THE APPLICATION OF APPROPRIATE SURFACE GEOPHYSICAL METHODS TO DETERMINE THE EXISTENCE AND APPROXIMATE HORIZONTAL POSITION OF SUBSURFACE UTILITIES. THIS INFORMATION IS SURVEYED AND REDUCED ONTO PLAN DOCUMENTS.

UTILITY QUALITY LEVEL C: INFORMATION OBTAINED BY SURVEYING AND PLOTTING VISIBLE ABOVE-GROUND UTILITY FEATURES, AND BY USING PROFESSIONAL JUDGEMENT IN CORRELATING THIS INFORMATION TO QUALITY LEVEL D INFORMATION.

UTILITY QUALITY LEVEL D: INFORMATION DERIVED FROM EXISTING RECORDS OR ORAL RECOLLECTIONS AND IS NOT FIELD VERIFIED.
- NOT ALL LOT LINES OUTSIDE THE BOUNDARY OF THE SUBJECT PROPERTY SHOWN HEREON HAVE BEEN FIELD SURVEYED AND ARE SHOWN AS A GRAPHICAL REPRESENTATION OF EXISTING LOT LINES BASED ON DEED, FILED MAPS AND TAX MAP INFORMATION.
- ONLY COPIES OF THE ORIGINAL SURVEY WITH AN ORIGINAL LAND SURVEYOR'S EMBOSSED SEAL SHALL BE CONSIDERED TO BE VALID COPIES. SIGNATURE AND EMBOSSED SEAL, SIGNED BY THE CERTIFICATION WAS PREPARED IN ACCORDANCE WITH THE EXISTING CODE OF PRACTICE ADOPTED BY THE NJ STATE BOARD OF PROFESSIONAL ENGINEERS AND LAND SURVEYORS. CERTIFICATIONS INDICATED HEREON SHALL RUN ONLY TO THE PERSON FOR WHOM THE CERTIFICATION IS PREPARED, AND ON HIS BEHALF TO THE TITLE COMPANY, GOVERNMENTAL AGENCY AND LENDING INSTITUTION LISTED HEREON. CERTIFICATIONS ARE NOT TRANSFERABLE TO ADDITIONAL INSTITUTIONS OR SUBSEQUENT OWNERS. UNAUTHORIZED ALTERATION OR ADDITION TO A CERTIFICATION BEARING A LICENSED LAND SURVEYOR'S SEAL IS ILLEGAL AND PUNISHABLE BY LAW. PROPERTY SUBJECT TO DOCUMENTS OF RECORD.



MATCHLINE A



MATCHLINE A

PROPERTY LINES				LEGEND					
OFF-SITE PROPERTY LINES				U UTILITY POLE		E EGRESS/INGRESS			
EXISTING MAJOR CONTOUR & ELEVATION				W 0' WIRE		M 0' MONITORING WELL		N 0' NEUTRAL FLAG	
EXISTING MINOR CONTOUR & ELEVATION				S 0' SIGN		F 0' FIRE HYDRANT		L 0' LIVING LOCATION	
APPROX. LOC. EXIST. UNDERGROUND DRAIN LINES				SD 0' SHIM DOUBBLE POST		WV 0' WATER VALVE		M 0' MAIL BOX	
APPROX. LOC. EXIST. UNDERGROUND FIBER OPTIC LINES				I 0' IN-SILET		WM 0' WATER METER		B 0' BOLLARD	
APPROX. LOC. EXIST. UNDERGROUND SANITARY SEWER LINES				I 0' IN-SILET		GV 0' GAS VALVE		L 0' LIGHTED BOLLARD	
APPROX. LOC. EXIST. OVERHEAD LINES				R 0' ROUND INLET		EM 0' ELECTRIC METER		L 0' LIGHT POLE	
APPROX. LOC. EXIST. UNDERGROUND FORDMAN LINES				R 0' ROUND INLET		E 0' ELECTRIC BOX		S 0' STREET LIGHT	
APPROX. LOC. EXIST. UNDERGROUND STORM SEWER LINES				R 0' ROUND INLET		C 0' CABLE		S 0' STREET LIGHT	
APPROX. LOC. EXIST. UNDERGROUND STORM SEWER LINES				R 0' ROUND INLET		C 0' CABLE		S 0' STREET LIGHT	
APPROX. LOC. EXIST. UNDERGROUND FIBER OPTIC LINES				R 0' ROUND INLET		C 0' CABLE		S 0' STREET LIGHT	
APPROX. LOC. EXIST. UNDERGROUND FIBER OPTIC LINES				R 0' ROUND INLET		C 0' CABLE		S 0' STREET LIGHT	
APPROX. LOC. EXIST. UNDERGROUND FIBER OPTIC LINES				R 0' ROUND INLET		C 0' CABLE		S 0' STREET LIGHT	
APPROX. LOC. EXIST. UNDERGROUND FIBER OPTIC LINES				R 0' ROUND INLET		C 0' CABLE		S 0' STREET LIGHT	
APPROX. LOC. EXIST. UNDERGROUND FIBER OPTIC LINES				R 0' ROUND INLET		C 0' CABLE		S 0' STREET LIGHT	
APPROX. LOC. EXIST. UNDERGROUND FIBER OPTIC LINES				R 0' ROUND INLET		C 0' CABLE		S 0' STREET LIGHT	
APPROX. LOC. EXIST. UNDERGROUND FIBER OPTIC LINES				R 0' ROUND INLET		C 0' CABLE		S 0' STREET LIGHT	
APPROX. LOC. EXIST. UNDERGROUND FIBER OPTIC LINES				R 0' ROUND INLET		C 0' CABLE		S 0' STREET LIGHT	
APPROX. LOC. EXIST. UNDERGROUND FIBER OPTIC LINES				R 0' ROUND INLET		C 0' CABLE		S 0' STREET LIGHT	
APPROX. LOC. EXIST. UNDERGROUND FIBER OPTIC LINES				R 0' ROUND INLET		C 0' CABLE		S 0' STREET LIGHT	
APPROX. LOC. EXIST. UNDERGROUND FIBER OPTIC LINES				R 0' ROUND INLET		C 0' CABLE		S 0' STREET LIGHT	
APPROX. LOC. EXIST. UNDERGROUND FIBER OPTIC LINES				R 0' ROUND INLET		C 0' CABLE		S 0' STREET LIGHT	
APPROX. LOC. EXIST. UNDERGROUND FIBER OPTIC LINES				R 0' ROUND INLET		C 0' CABLE		S 0' STREET LIGHT	
APPROX. LOC. EXIST. UNDERGROUND FIBER OPTIC LINES				R 0' ROUND INLET		C 0' CABLE		S 0' STREET LIGHT	
APPROX. LOC. EXIST. UNDERGROUND FIBER OPTIC LINES				R 0' ROUND INLET		C 0' CABLE		S 0' STREET LIGHT	
APPROX. LOC. EXIST. UNDERGROUND FIBER OPTIC LINES				R 0' ROUND INLET		C 0' CABLE		S 0' STREET LIGHT	
APPROX. LOC. EXIST. UNDERGROUND FIBER OPTIC LINES				R 0' ROUND INLET		C 0' CABLE		S 0' STREET LIGHT	
APPROX. LOC. EXIST. UNDERGROUND FIBER OPTIC LINES				R 0' ROUND INLET		C 0' CABLE		S 0' STREET LIGHT	
APPROX. LOC. EXIST. UNDERGROUND FIBER OPTIC LINES				R 0' ROUND INLET		C 0' CABLE		S 0' STREET LIGHT	
APPROX. LOC. EXIST. UNDERGROUND FIBER OPTIC LINES				R 0' ROUND INLET		C 0' CABLE		S 0' STREET LIGHT	
APPROX. LOC. EXIST. UNDERGROUND FIBER OPTIC LINES				R 0' ROUND INLET		C 0' CABLE		S 0' STREET LIGHT	
APPROX. LOC. EXIST. UNDERGROUND FIBER OPTIC LINES				R 0' ROUND INLET		C 0' CABLE		S 0' STREET LIGHT	
APPROX. LOC. EXIST. UNDERGROUND FIBER OPTIC LINES				R 0' ROUND INLET		C 0' CABLE		S 0' STREET LIGHT	
APPROX. LOC. EXIST. UNDERGROUND FIBER OPTIC LINES				R 0' ROUND INLET		C 0' CABLE		S 0' STREET LIGHT	
APPROX. LOC. EXIST. UNDERGROUND FIBER OPTIC LINES				R 0' ROUND INLET		C 0' CABLE		S 0' STREET LIGHT	
APPROX. LOC. EXIST. UNDERGROUND FIBER OPTIC LINES				R 0' ROUND INLET		C 0' CABLE		S 0' STREET LIGHT	
APPROX. LOC. EXIST. UNDERGROUND FIBER OPTIC LINES				R 0' ROUND INLET		C 0' CABLE		S 0' STREET LIGHT	
APPROX. LOC. EXIST. UNDERGROUND FIBER OPTIC LINES				R 0' ROUND INLET		C 0' CABLE		S 0' STREET LIGHT	
APPROX. LOC. EXIST. UNDERGROUND FIBER OPTIC LINES				R 0' ROUND INLET		C 0' CABLE		S 0' STREET LIGHT	
APPROX. LOC. EXIST. UNDERGROUND FIBER OPTIC LINES				R 0' ROUND INLET		C 0' CABLE		S 0' STREET LIGHT	
APPROX. LOC. EXIST. UNDERGROUND FIBER OPTIC LINES				R 0' ROUND INLET		C 0' CABLE		S 0' STREET LIGHT	
APPROX. LOC. EXIST. UNDERGROUND FIBER OPTIC LINES				R 0' ROUND INLET		C 0' CABLE		S 0' STREET LIGHT	
APPROX. LOC. EXIST. UNDERGROUND FIBER OPTIC LINES				R 0' ROUND INLET		C 0' CABLE		S 0' STREET LIGHT	
APPROX. LOC. EXIST. UNDERGROUND FIBER OPTIC LINES				R 0' ROUND INLET		C 0' CABLE		S 0' STREET LIGHT	
APPROX. LOC. EXIST. UNDERGROUND FIBER OPTIC LINES				R 0' ROUND INLET		C 0' CABLE		S 0' STREET LIGHT	
APPROX. LOC. EXIST. UNDERGROUND FIBER OPTIC LINES				R 0' ROUND INLET		C 0' CABLE		S 0' STREET LIGHT	
APPROX. LOC. EXIST. UNDERGROUND FIBER OPTIC LINES				R 0' ROUND INLET		C 0' CABLE		S 0' STREET LIGHT	
APPROX. LOC. EXIST. UNDERGROUND FIBER OPTIC LINES				R 0' ROUND INLET		C 0' CABLE		S 0' STREET LIGHT	
APPROX. LOC. EXIST. UNDERGROUND FIBER OPTIC LINES				R 0' ROUND INLET		C 0' CABLE		S 0' STREET LIGHT	
APPROX. LOC. EXIST. UNDERGROUND FIBER OPTIC LINES				R 0' ROUND INLET		C 0' CABLE		S 0' STREET LIGHT	
APPROX. LOC. EXIST. UNDERGROUND FIBER OPTIC LINES				R 0' ROUND INLET		C 0' CABLE		S 0' STREET LIGHT	
APPROX. LOC. EXIST. UNDERGROUND FIBER OPTIC LINES				R 0' ROUND INLET		C 0' CABLE		S 0' STREET LIGHT	
APPROX. LOC. EXIST. UNDERGROUND FIBER OPTIC LINES				R 0' ROUND INLET		C 0' CABLE		S 0' STREET LIGHT	
APPROX. LOC. EXIST. UNDERGROUND FIBER OPTIC LINES				R 0' ROUND INLET		C 0' CABLE		S 0' STREET LIGHT	
APPROX. LOC. EXIST. UNDERGROUND FIBER OPTIC LINES				R 0' ROUND INLET		C 0' CABLE		S 0' STREET LIGHT	
APPROX. LOC. EXIST. UNDERGROUND FIBER OPTIC LINES				R 0' ROUND INLET		C 0' CABLE		S 0' STREET LIGHT	
APPROX. LOC. EXIST. UNDERGROUND FIBER OPTIC LINES				R 0' ROUND INLET		C 0' CABLE		S 0' STREET LIGHT	
APPROX. LOC. EXIST. UNDERGROUND FIBER OPTIC LINES				R 0' ROUND INLET		C 0' CABLE		S 0' STREET LIGHT	
APPROX. LOC. EXIST. UNDERGROUND FIBER OPTIC LINES				R 0' ROUND INLET		C 0' CABLE		S 0' STREET LIGHT	
APPROX. LOC. EXIST. UNDERGROUND FIBER OPTIC LINES				R 0' ROUND INLET		C 0' CABLE		S 0' STREET LIGHT	
APPROX. LOC. EXIST. UNDERGROUND FIBER OPTIC LINES				R 0' ROUND INLET		C 0' CABLE		S 0' STREET LIGHT	
APPROX. LOC. EXIST. UNDERGROUND FIBER OPTIC LINES				R 0' ROUND INLET		C 0' CABLE		S 0' STREET LIGHT	
APPROX. LOC. EXIST. UNDERGROUND FIBER OPTIC LINES				R 0' ROUND INLET		C 0' CABLE		S 0' STREET LIGHT	
APPROX. LOC. EXIST. UNDERGROUND FIBER OPTIC LINES				R 0' ROUND INLET		C 0' CABLE		S 0' STREET LIGHT	
APPROX. LOC. EXIST. UNDERGROUND FIBER OPTIC LINES				R 0' ROUND INLET		C 0' CABLE		S 0' STREET LIGHT	
APPROX. LOC. EXIST. UNDERGROUND FIBER OPTIC LINES				R 0' ROUND INLET		C 0' CABLE		S 0' STREET LIGHT	
APPROX. LOC. EXIST. UNDERGROUND FIBER OPTIC LINES									