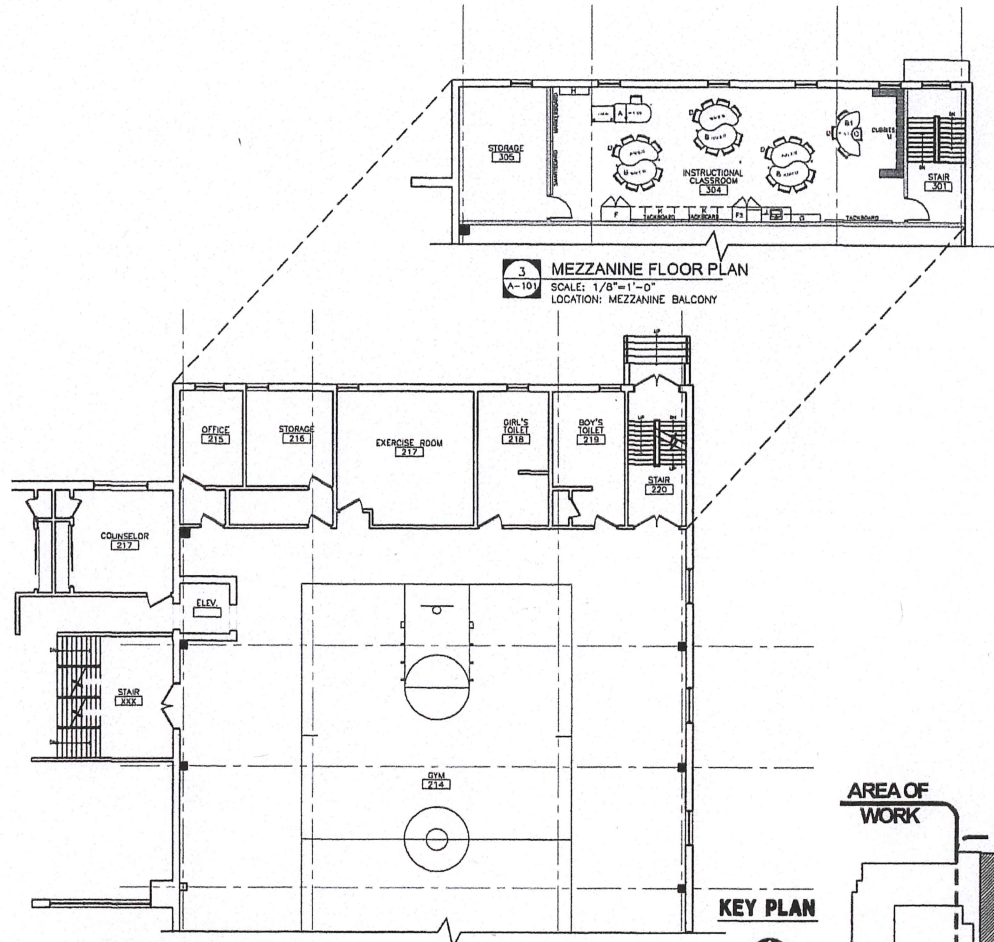


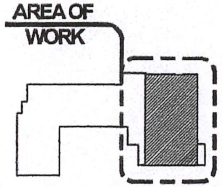
**1 FIRST FLOOR PLAN**  
 A-101 SCALE: 1/8"=1'-0"  
 LOCATION: FIRST FLOOR



**3 MEZZANINE FLOOR PLAN**  
 A-101 SCALE: 1/8"=1'-0"  
 LOCATION: MEZZANINE BALCONY

**2 SECOND FLOOR PLAN**  
 A-101 SCALE: 1/8"=1'-0"  
 LOCATION: SECOND FLOOR

**KEY PLAN**



Date: 04-18-2022



College Achieve Greater  
 Asbury Park Charter School  
 Addition of Instructional Classrooms  
 3455 West Bangs Avenue, Neptune, NJ 07753  
 Project #2221726



**NETTAARCHITECTS**  
 ARCHITECTURE - PLANNING - INTERIOR DESIGN  
 1084 ROUTE 22 WEST, MOUNTAINSIDE, NEW JERSEY 07092  
 TEL: 973.379.0066 FAX: 973-379-1061