

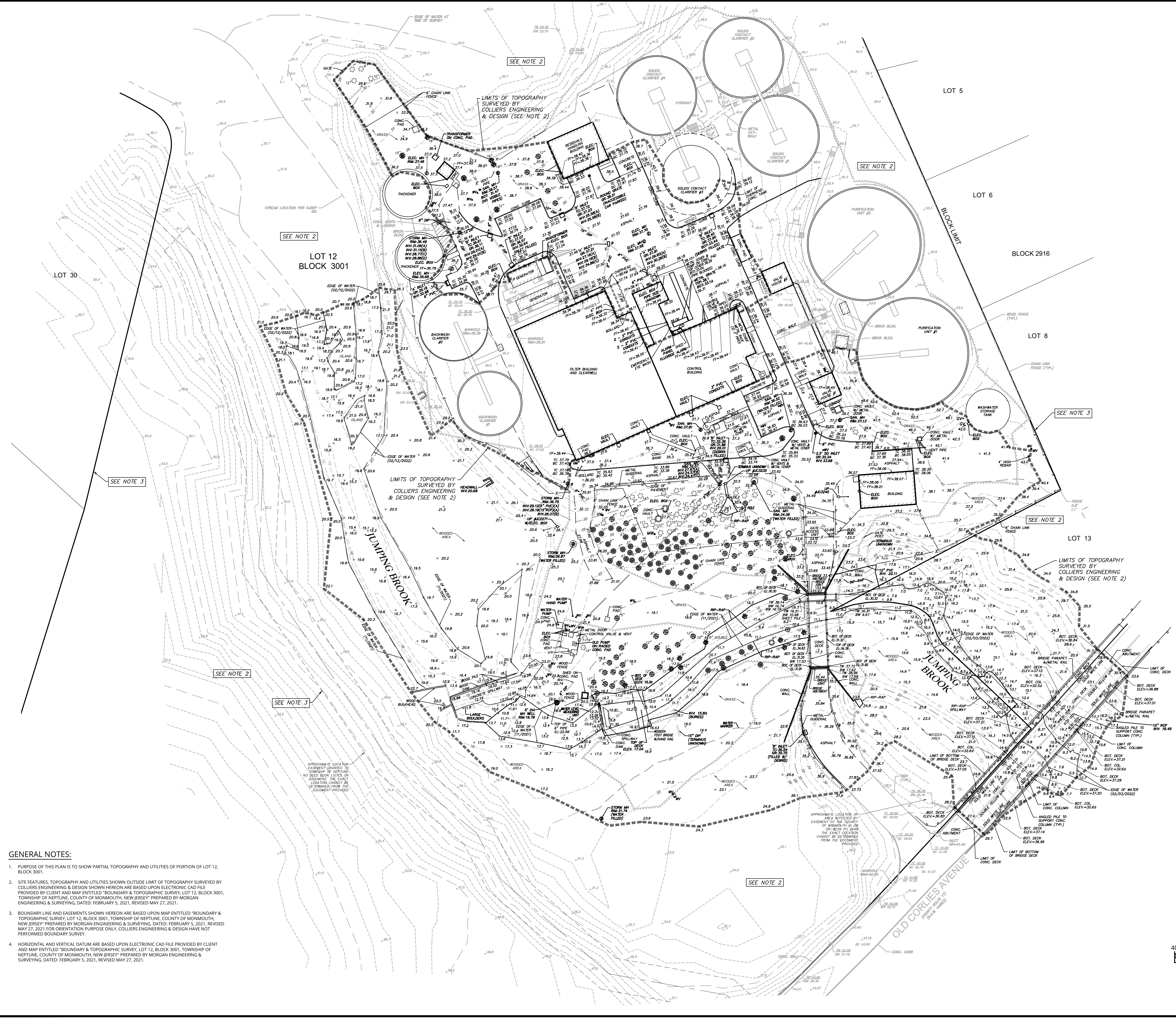
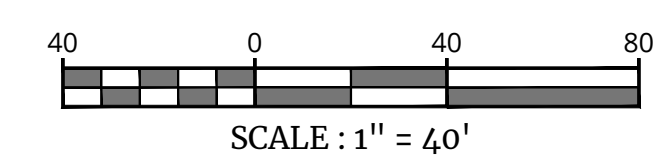
LEGEND

12+00 13+00

TRaverse Line, Center Line or Baseline
 Right of Way Line
 Property Line
 Edge of Pavement
 Face
 Curved Line
 D.C. BACK
 Depressed Curb
 Chain Fence
 Wetland Line
 Municipal Boundary
 Treeline
 Electrical Manhole
 Water Manhole
 Telephone Manhole
 Unmarked Manhole
 Sanitary Manhole
 Drainage Manhole
 Major Contour
 Minor Contour
 Spot Elevation
 Top of Curb Elev.
 Bottom of Curb Elev.
 U/G Cable TV Line
 U/G Fiber Optic Line
 U/G Telephone Line
 U/G Electric Line
 Overhead Wire
 Water Main
 Gas Main
 San. Sewer Lateral
 San. Sewer Main
 Storm Pipe
 Wetland Marker
 Tree
 Roadway Signs
 Traffic Flow
 Mailbox
 Traffic Signal Pole
 Pole Mounted Light
 Utility Pole
 Guy Wire
 Transformer
 Fire Dept. Connection
 Fire Hydrant
 Water Valve
 Gas Valve
 Sanitary Cleanout
 Concrete Monument
 Capped Rebar/Iron Pipe
 Storm Inlet Type 'A'
 Storm Inlet Type 'B'
 STM. DBL. Inlet Type 'B'
 Storm Inlet Type 'E'
 STM. DBL. Inlet Type 'E'
 Flared End Section
 Headwall

ABBREVIATIONS

D.C. = DEPRESSED CURB
 BC = BOTTOM OF CURB
 CL = CENTERLINE
 TC = TOP OF CURB
 BOLL = BOLLARD
 GRT = GRATE
 MB = MAILBOX
 FF = FINISH FLOOR
 UV = UNKNOWN VALVE
 MH = MANHOLE
 DEP. = DEPRESSED
 CL = CENTERLINE
 PM = PARKING METER
 MHW = MEAN HIGH
 WL = WATERLINE
 MLW = MEAN LOW
 WTL = WATERLINE
 TW = TOP OF WALL
 BW = BOTTOM WALL



- GENERAL NOTES:**
- PURPOSE OF THIS PLAN IS TO SHOW PARTIAL TOPOGRAPHY AND UTILITIES OF PORTION OF LOT 12, BLOCK 3001.
 - SITE FEATURES, TOPOGRAPHY AND UTILITIES SHOWN OUTSIDE LIMIT OF TOPOGRAPHY SURVEYED BY COLLIER'S ENGINEERING & DESIGN SHOWN HEREON ARE BASED UPON ELECTRONIC CAD FILE PROVIDED BY CLIENT AND MAP ENTITLED "BOUNDARY & TOPOGRAPHIC SURVEY, LOT 12, BLOCK 3001, TOWNSHIP OF NEPTUNE, COUNTY OF MONMOUTH, NEW JERSEY" PREPARED BY MORGAN ENGINEERING & SURVEYING, DATED: FEBRUARY 5, 2021, REVISED MAY 27, 2021 FOR ORIENTATION PURPOSE ONLY. COLLIER'S ENGINEERING & DESIGN HAVE NOT PERFORMED BOUNDARY SURVEY.
 - BOUNDARY LINE AND EASEMENTS SHOWN HEREON ARE BASED UPON MAP ENTITLED "BOUNDARY & TOPOGRAPHIC SURVEY, LOT 12, BLOCK 3001, TOWNSHIP OF NEPTUNE, COUNTY OF MONMOUTH, NEW JERSEY" PREPARED BY MORGAN ENGINEERING & SURVEYING, DATED: FEBRUARY 5, 2021, REVISED MAY 27, 2021 FOR ORIENTATION PURPOSE ONLY. COLLIER'S ENGINEERING & DESIGN HAVE NOT PERFORMED BOUNDARY SURVEY.
 - HORIZONTAL AND VERTICAL DATUM ARE BASED UPON ELECTRONIC CAD FILE PROVIDED BY CLIENT AND MAP ENTITLED "BOUNDARY & TOPOGRAPHIC SURVEY, LOT 12, BLOCK 3001, TOWNSHIP OF NEPTUNE, COUNTY OF MONMOUTH, NEW JERSEY" PREPARED BY MORGAN ENGINEERING & SURVEYING, DATED: FEBRUARY 5, 2021, REVISED MAY 27, 2021.

Jeffrey D. Bunce
 NEW JERSEY LICENSED PROFESSIONAL LAND SURVEYOR
 LICENSE NUMBER: 6541045
 COLLIER'S ENGINEERING & DESIGN, INC.
 N.J. C.O.A. #: 24C2798500

PARTIAL TOPOGRAPHIC & UTILITY SURVEY

FOR
NEW JERSEY AMERICAN WATER TREATMENT PLANT

BLOCK 3001
 PART OF LOT 12
 625 OLD COLLIER AVENUE
 TOWNSHIP OF NEPTUNE
 MONMOUTH COUNTY
 NEW JERSEY

RED BANK (Headquarters)
 331 Newman Springs Road,
 Suite 203
 Red Bank, NJ 07701
 Phone: 732.383.1950
 COLLIER'S ENGINEERING & DESIGN, INC.
 DOING BUSINESS AS MASER CONSULTANTS

SCALE:	DATE:	DRAWN BY:	CHECKED BY:
AS SHOWN	12/14/21	JK	JP
PROJECT NUMBER:	DRAWING NAME:		
21003234A	V-SURV		

PARTIAL TOPOGRAPHIC & UTILITY SURVEY