

TAX BLOCK 1001

TAX BLOCK 613

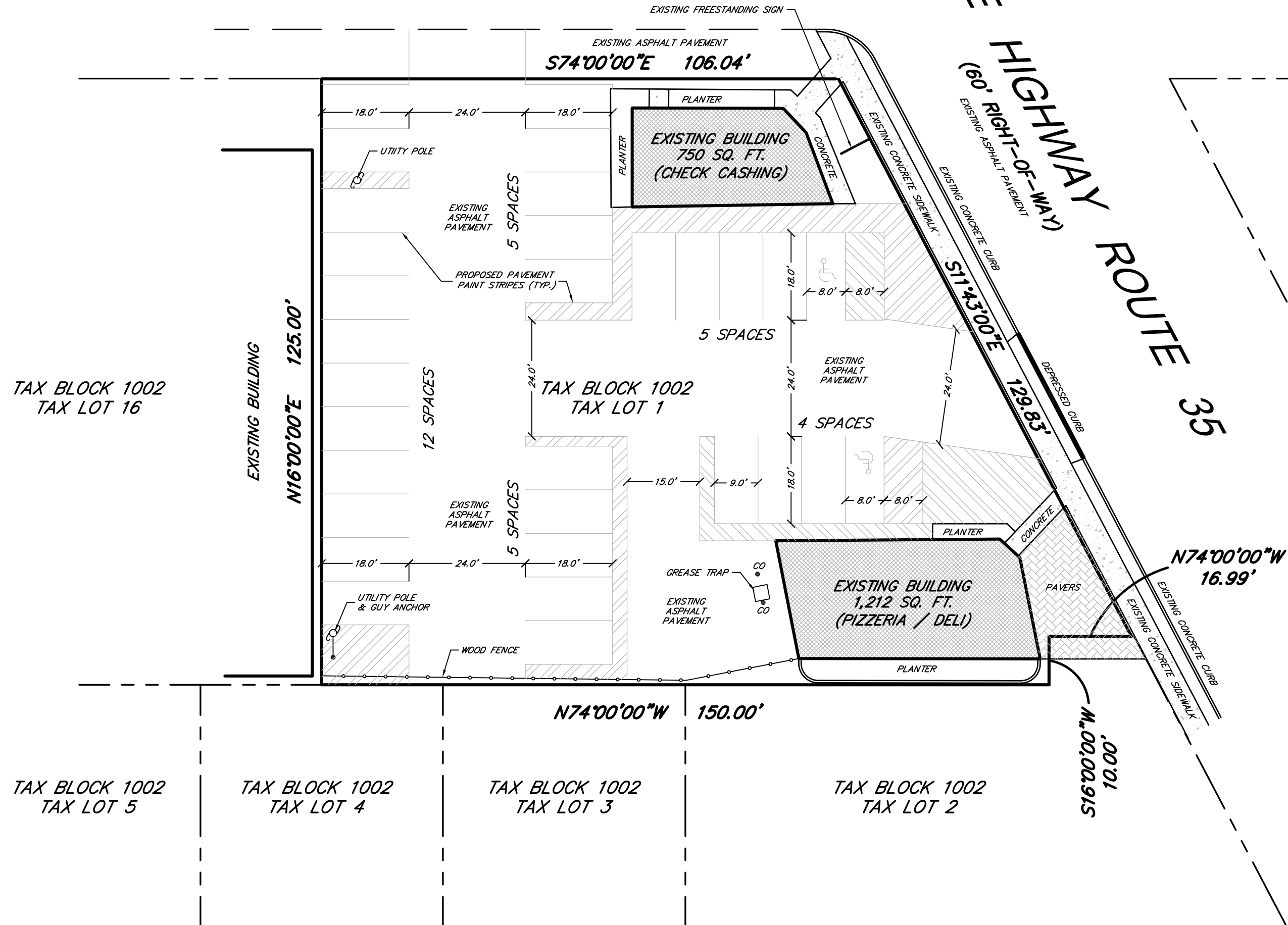
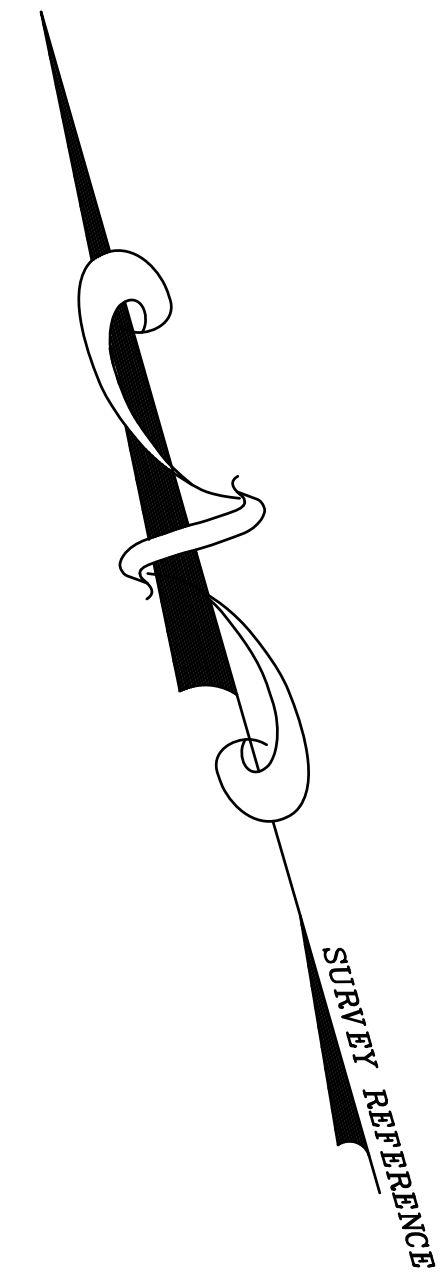
RUTHERFORD AVENUE

(50' RIGHT-OF-WAY)
EXISTING ASPHALT PAVEMENT

N.J. STATE HIGHWAY ROUTE 35

(60' RIGHT-OF-WAY)
EXISTING ASPHALT PAVEMENT

TAX BLOCK 612



TAX BLOCK 1002
TAX LOT 16

TAX BLOCK 1002
TAX LOT 5

TAX BLOCK 1002
TAX LOT 4

TAX BLOCK 1002
TAX LOT 3

TAX BLOCK 1002
TAX LOT 2

OFF-STREET PARKING SUMMARY:

REQUIRED PARKING:

BANKS ~ 1 SPACE PER 250 SQ. FT. = 3 SPACES
RESTAURANT (TAKE-OUT) ~ 1 SPACE PER 250 SQ. FT. = 5 SPACES
TOTAL REQUIRED PARKING = 8 SPACES

TOTAL OFF-STREET PARKING SPACES PROVIDED = 31 SPACES

REFERENCES:

"SURVEY OF LOTS 130 to 134; BLOCK 265 NEPTUNE TOWNSHIP, MONMOUTH COUNTY, N.J.," PREPARED BY AZIMUTH LAND SURVEYING CO., INC., DATED NOVEMBER 3, 2014.

"SURVEY OF PROPERTY MADE FOR MONAY, INC. SITUATED IN THE TOWNSHIP OF NEPTUNE, MONMOUTH COUNTY, N.J.," PREPARED BY WILLIAM D. AYERS, C.E., DATED MARCH 16, 1962.

TA-127679 ~ TRIDENT ABSTRACT TITLE AGENCY, LLC

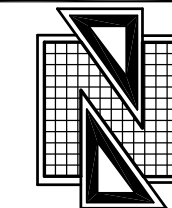
GRAPHIC SCALE



(IN FEET)
1 inch = 20 ft.

NO.	REVISION DESCRIPTION	DATE	DRWN	CHKD BY

PROPOSED PARKING LAYOUT
COLLARD REALTY
TAX BLOCK 1002, TAX LOT 1
TOWNSHIP OF NEPTUNE
MONMOUTH COUNTY, NEW JERSEY
 (TAX MAP REFERENCE TOWNSHIP OF NEPTUNE SHEET No. 10 ~ NOVEMBER 2014)



Nelson Engineering Associates, Inc.

1750 BLOOMSBURY AVENUE
OCEAN, NEW JERSEY 07712
TEL. (732)-918-2180 FAX (732)-918-0697
WWW.NELSONENG.NET
CERTIFICATE OF AUTHORIZATION # 24GA28014900

SITE ENGINEERING
TRAFFIC ENGINEERING
LANDSCAPE ARCHITECTURE
ENVIRONMENTAL STUDIES
LAND SURVEYING & MAPPING

FOR THE FIRM

Paul H Boesch

DATE

DAVID H. BOESCH, L.L.A.

LICENSED LANDSCAPE ARCHITECT NEW JERSEY LICENSE No. AS000489

SCALE: 1"=20'
FILE: 200207

DRAWN BY: DHB
DATE: 02-27-2020

CHKD. BY: DHB
SHEET 1 OF 1