



Wesley Lake Commission

Asbury Park | Neptune Township

Our Focus

The Commission's focus is on improving the quality and quantity of water entering the Lake, the ecology of the Lake itself, and the quality of water flowing from the Lake into the Atlantic Ocean. In addition, the Wesley Lake Commission seeks to enhance recreational opportunities at the Lake and improve pedestrian and bicycle circulation around the Lake and across the bridges.

Lake History

- Wesley Lake is a naturally formed inlet, formerly open directly to the Atlantic Ocean.
- Sometime in the early 1900's storm actions severely restricted this inlet.
- Thereafter a man-made alteration completely closed off access to the ocean and caused drainage to be routed through the spillway, box culvert and outfall pipe currently in existence.
- The outfall piping is located under the existing boardwalk and beach, and water empties into the Ocean.



Goals for 2024-2029



- Goose Management
- Bridge Rehabilitation
- Biochar Installation (removing harmful nutrients)
- Streetscape Plan
- Living Shorelines
- Wall Stabilization
- Dredging

Geese Management

- The Commission supports Canada Geese control measures as part of a multi-prong plan for managing the persistent population.
 - Lights and lasers in the Lake to deter them at night
 - Contracted Geese Chasers
 - Identification of Nests
 - Educational Signs



Bridge Rehabilitation

Congressman Frank Pallone, Jr. was able to secure One Million in federal funding for Neptune Township to repair the Wesley Lake Pedestrian Bridges and improve pedestrian safety. This federal allocation was based on a bridge engineering study both municipalities funded that recommended surface rehabilitation, lighting, aprons and ramps.

☰ Patch Sign up

Asbury Park, NJ [Subscribe](#)

News Feed Events Local Businesses Classifieds

[Politics & Government](#)

Neptune Gets \$1M To Make Wesley Lake Bridge Repairs

Neptune will be given \$1 million to repair the Wesley Lake pedestrian bridge. Long Branch also received \$850,000 to build a new small park:



Carly Baldwin, Patch Staff P

Posted Fri, Mar 8, 2024 at 11:51 am ET



Biochar

The installation of Biochar would remove nutrients harmful to the water quality of the Lake. Biochar is placed in flotation balls, cages or bags which are then tethered along the shoreline and in critical locations through out the Lake. It then filters the harmful nutrients out of the water, improving water quality.



Streetscape Plans

The Wesley Lake Commission has determined that a plan for the surrounding area of the Lake is necessary for public safety and enjoyment. The plan would include wide sidewalks, lighting, landscaping, benches, trash receptacles and other applicable amenities.



Living Shoreline Demonstration

The Commission plans to explore reconstructing the shoreline without the use of hardened bulkhead. This lower-cost option would be an opportunity to gauge the improvements in ecology, Lake access, and aesthetics provided by a bulkhead alternative.



Wall Shoreline Stabilization

The western half of both sides of the Lake consists of crumbled bulkheads and eroding shoreline. Costs of rehabilitation will vary depending on the solution proposed, with replacement bulkhead being the most expensive and other alternatives such as living shorelines costing less.



Dredging/Stormwater Management

The Commission recognizes the ongoing need to remove accumulated sediment from the Lake. This project should partner with efforts on both sides of the Lake to improve stormwater management such that sediment loads leading into the Lake are reduced.



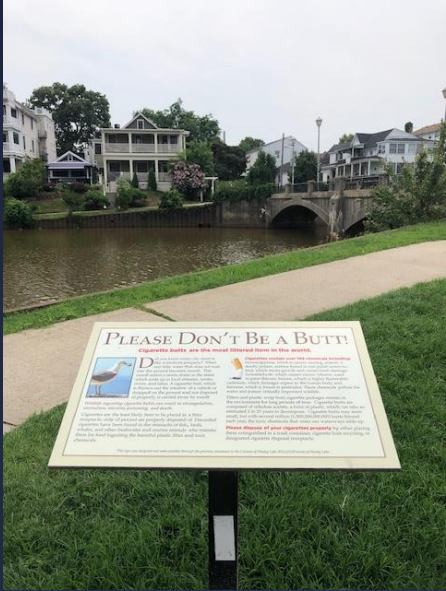
Improving Water Quality

- The water in the Lake is a mixture of ocean water, rainwater and stormwater drainage.
- The stormwater brings large quantities of sediment into the Lake, reducing Lake depth and water quality.
- Ultimately the ecological balance of the Lake is negatively affected.
- The Wesley Lake Commission has a partnership with Monmouth University and a community-based initiative called CLONet to monitor the quality of water in the Lake.
- The bi-weekly testing of the water began in 2019 by Commission volunteers
- In 2018 The Deal Lake Commission secured a grant for Deal, Sunset and Wesley Lakes to improve water quality.
- The grant funded stormwater treatment devices, raingardens and floating islands. All three filter out harmful nutrients, oil, floatables and/or chemicals from the Lake water



How Can You Help?

- Properly dispose of dog waste and cigarette butts
- Don't feed the wildlife
- Spread the word about the important ecological balance in and around the Lake
- Advocate to elected officials for funding to protect the Lake



Wesley Lake Commission Members

Elected Officials/Representative

Keith Cafferty, Neptune Township Committee Member, Term Expires 12/31/24

Eileen Chapman, Asbury Park Council, Term Expires 1/15/27

City Manager Appointee

Dr. James Brown, Neptune Township, Term Expires 12/31/24

Edward Lacombe, Treasurer, Asbury Park, Term Expires 1/15/27

Municipal Engineer or DPW Representative

Joseph Leone, Road Department Supervisor, DPW, Neptune Township, Term Expires 12/31/24

Anthony Thompson, Foreman, APDPW, Asbury Park, Term Expires 1/15/27

Two Residents From Each Municipality

Barbara Lesinski, Asbury Park, Term Expires 12/31/25

Gail Rosewater, Chair, Asbury Park, Term Expires 1/15/27

Keith Fiori, Neptune Township, Term Expires 12/31/24

Vacant, Neptune Township, Term Expires 12/31/24

Individual Appointed by Majority Vote

Doug McQueen, Vice Chair

Alternates

Gary Iott, Neptune Township, Term Expires 12/31/24

Jennifer Schimpf, Secretary, Asbury Park Term Expires 1/15/27