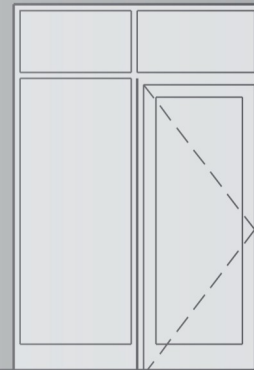
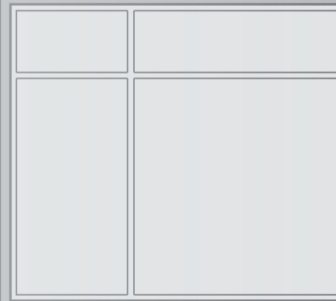


EXTERIOR SIGN

MEDLINE INDUSTRIES

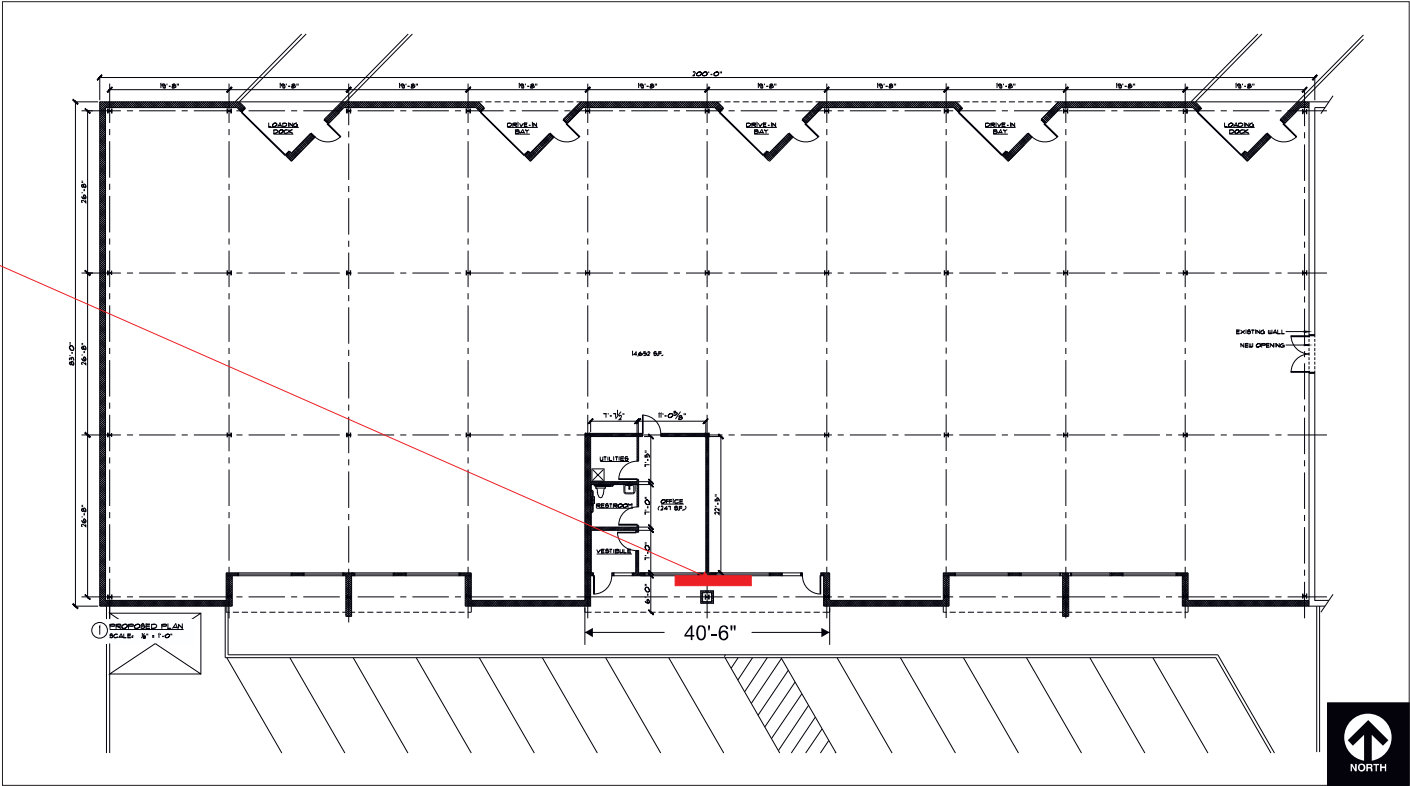
MEDLINE INDUSTRIES



SITE PLAN

FULL BUILDING LINEAR FRONTAGE: 200'-0"  
FOUR STAR DEVELOPERS - MEDLINE INDUSTRIES FRONTAGE: 40'-6"

1.0 ILLUMINATED  
WALL CABINET SIGN  
MEDLINE INDUSTRIES



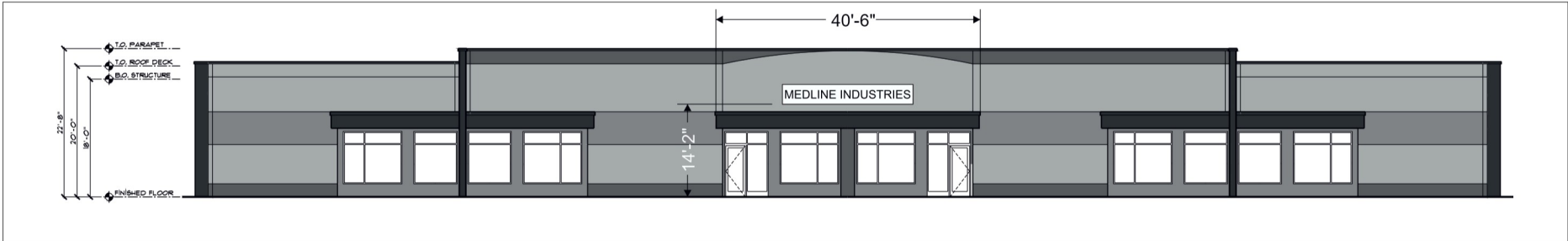
Scale: NTS

1.0 ILLUMINATED WALL CABINET SIGN

NIGHT VIEW

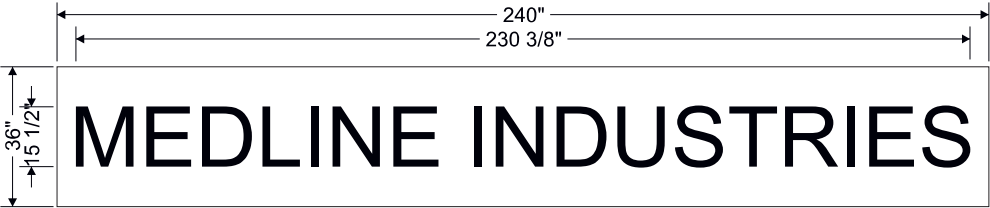


FOUR STAR DEVELOPERS - MEDLINE INDUSTRIES FRONTAGE: 40'-6"  
SIGN SQ.FT.: 60



PROPOSED ELEVATION (DAY VIEW)  
SACLE: 1/16"= 1'-0"

1.0 ILLUMINATED WALL CABINET SIGN



1.0 Illuminated Wall Cabinet Sign  
Scale: 3/8"= 1'-0"

Qty.: 1  
Sq.Ft.: 60

NOTE: CONFIRMATION OF ARTWORK IS REQUIRED.



End View

VINYL/ COLOR SPEC:

Digitally printed graphics to match provided CMYK colors

SIGN SPECIFICATIONS -

RETURN: 5" x .063" aluminum returns PTM Black  
FACES: Digitally printed flex faces  
LED's: White LED's  
BACKS: .090" Aluminum backs

INSTALL: Mounted to wall with mounting cleats

