

NORTH END REDEVELOPMENT

OCEAN GROVE, NEW JERSEY

AMENDED SITE PLAN - LANDSCAPE ARCHITECTURE PLANS

SUBMISSION SET 06/06/24

LANDSCAPE ARCHITECT

MELILLO + BAUER ASSOCIATES
LANDSCAPE ARCHITECTURE
200 UNION AVENUE
BRIELLE, NEW JERSEY 08730
PHONE: 732.528.0664

ARCHITECT

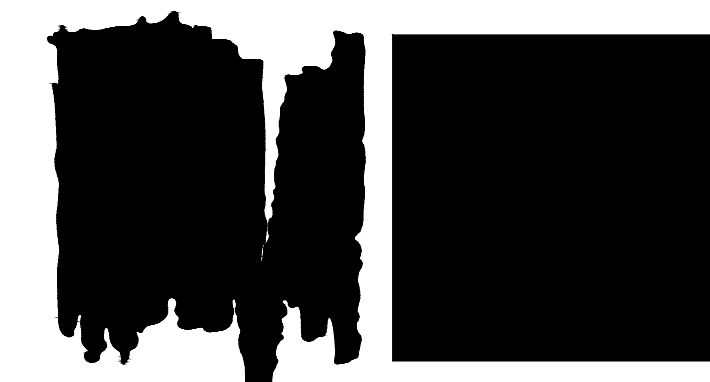
SHORE POINT ARCHITECTURE
108 SOUTH MAIN STREET
OCEAN GROVE, NJ. 07756
PHONE: 732.774.6900

ENGINEER

INSITE ENGINEERING
1955 ROUTE 34, SUITE 1A
WALL, NJ. 07719
PHONE: 732.531.7100

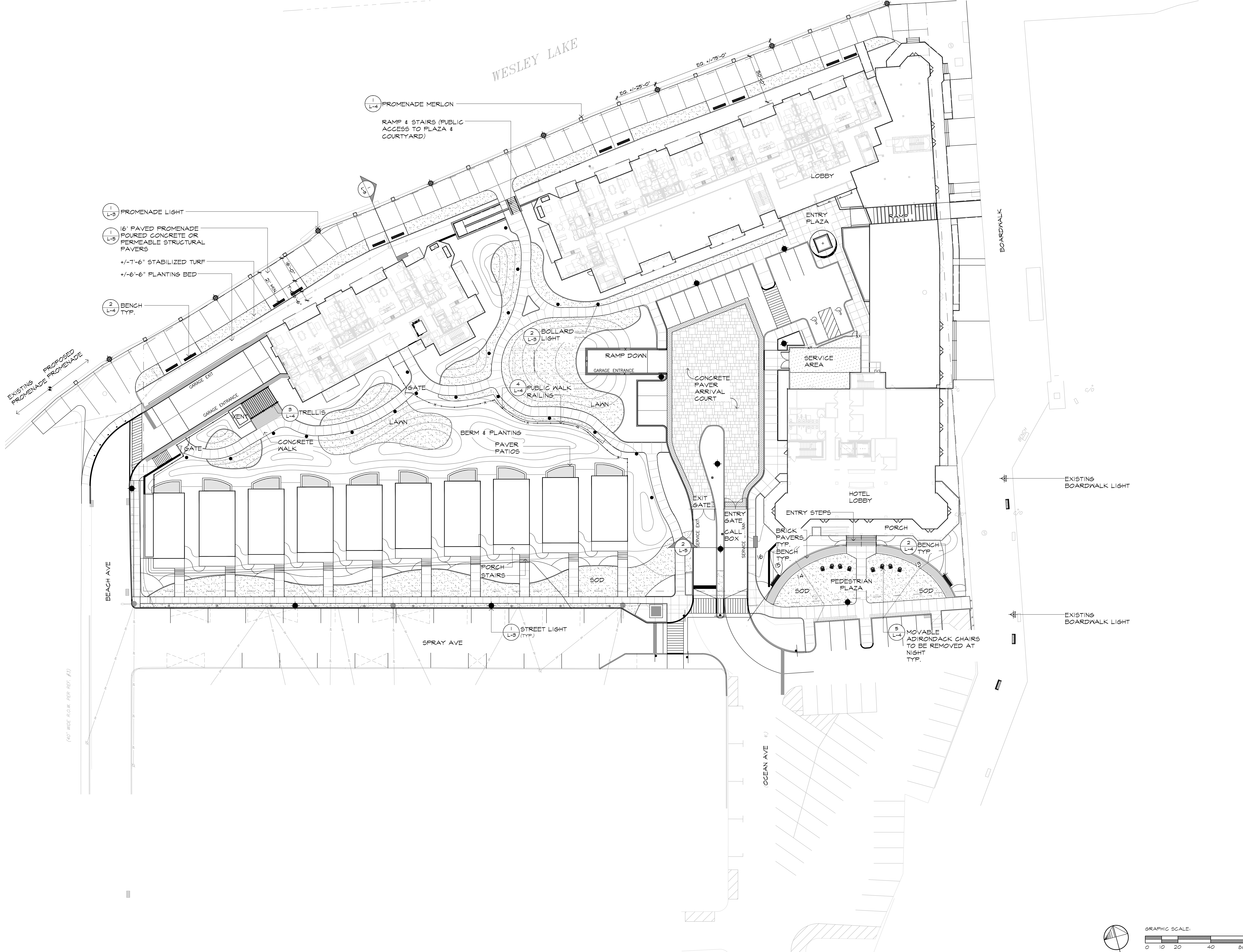
Submission Set (19-109)

DRAWING LIST		DATE	STATUS
	Cover Sheet		Amended Site Plan
L-1	Materials Plan	06/06/24	Amended Site Plan
L-2	Planting Plan	06/06/24	Amended Site Plan
L-3	Lighting Plan	06/06/24	Amended Site Plan
L-4	Site Details	06/06/24	Amended Site Plan
L-5	Site Details	06/06/24	Amended Site Plan
L-6	Open Space Diagram	06/06/24	Amended Site Plan
L-7	Green Roof Diagram	06/06/24	Amended Site Plan



MELILLO+BAUER
ASSOCIATES

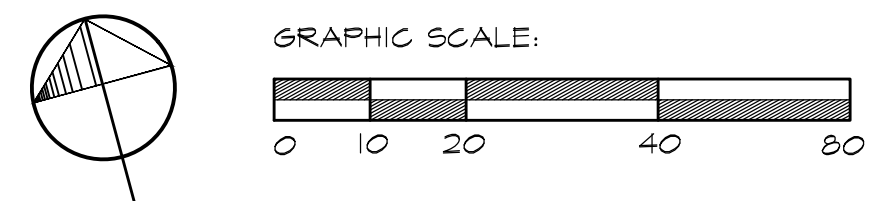
Landscape Architecture
200 Union Avenue
Brielle, New Jersey 08730
T 732_528_0664
F 732_528_1077



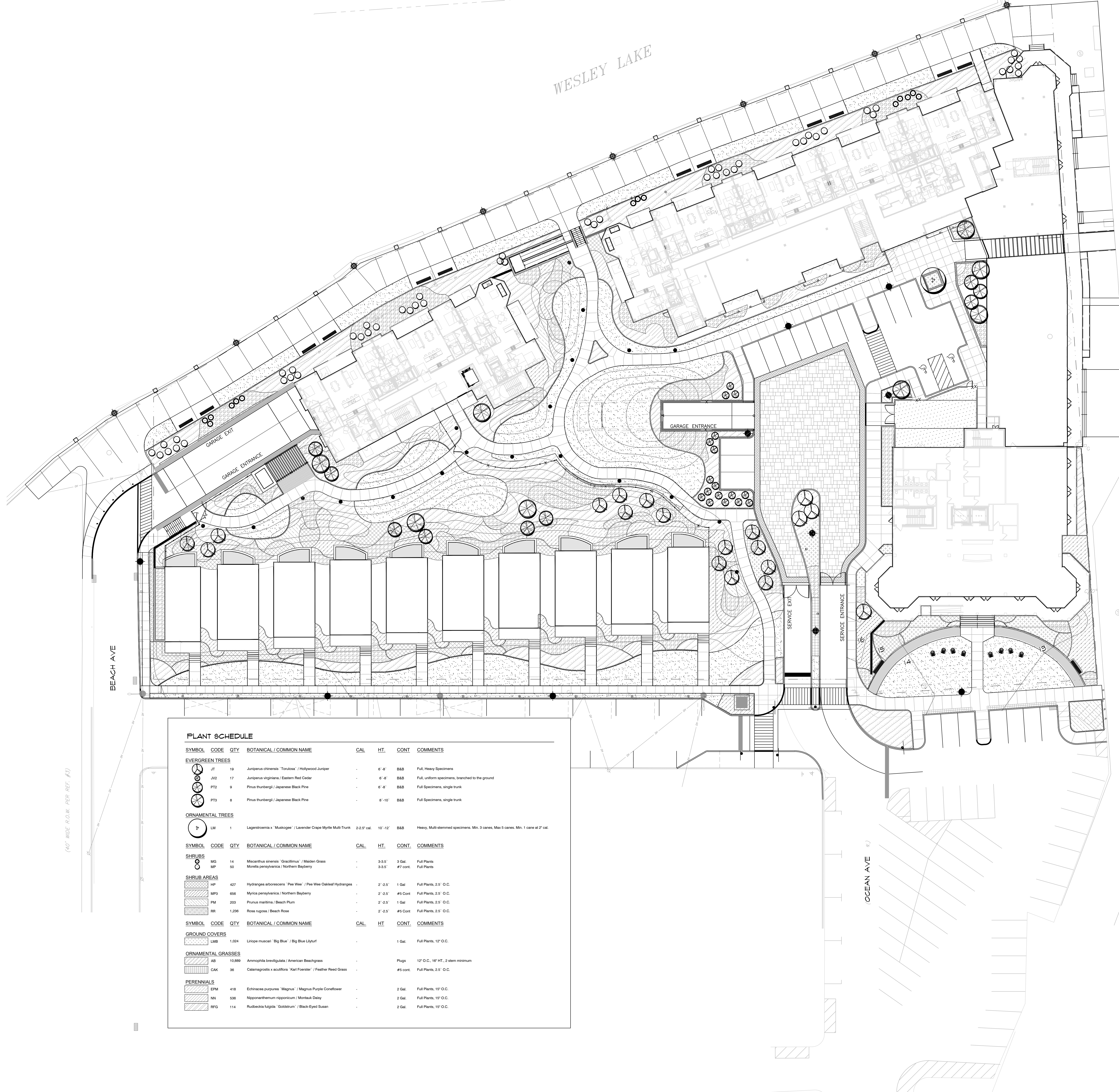
MELILLO+BAUER ASSOCIATES
Landscape Architecture
200 Union Avenue
Brielle, New Jersey 08730
T 732.528.0664
F 732.528.1077

THOMAS B. BAUER
Thomas B. Bauer
N.J. LICENSED
LANDSCAPE ARCHITECT
NO. A5000019

1	06/06/24	REVISED PER COMMENTS
NO.	DATE	REVISION
SCALE: 1"=20'		
DATE: 2019.07.08 JOB NO.: 19-109		



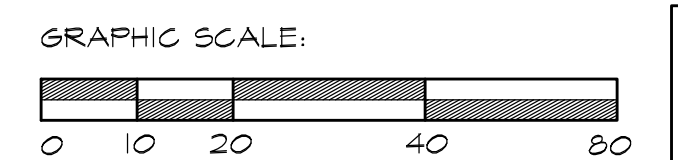
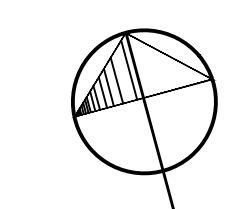
WESLEY LAKE



PLANT SCHEDULE

SYMBOL	CODE	QTY	BOTANICAL / COMMON NAME	CAL	HT.	CONT.	COMMENTS
EVERGREEN TREES							
	JT	19	Juniperus chinensis 'Torulosa' / Hollyhock Juniper	-	6'-8"	B&B	Full Heavy Specimens
	JV2	17	Juniperus virginiana / Eastern Red Cedar	-	6'-8"	B&B	Full, uniform specimens, branched to the ground
	PT2	9	Pinus thunbergii / Japanese Black Pine	-	6'-8"	B&B	Full Specimens, single trunk
	PT3	8	Pinus thunbergii / Japanese Black Pine	-	6'-10"	B&B	Full Specimens, single trunk
ORNAMENTAL TREES							
	LM	1	Lagerstroemia x 'Muskogee' / Lavender Craple Myrtle Multi-Trunk	2-2.5' cal.	10'-12'	B&B	Heavy, Multi-stemmed specimens. Min. 3 canes, Max 5 canes. Min. 1 cane at 2" cal.
SHRUBS							
	MG	14	Micarrthus sinensis 'Grodinus' / Maiden Grass	-	3-3.5'	3 Gal.	Full Plants
	MP	50	Monarda pennsylvanica / Northern Bayberry	-	3-3.5'	#7 cont.	Full Plants
SHRUB AREAS							
	HP	427	Hydrangea arborescens 'Pee Wee' / Pee Wee Oakleaf Hydrangeas	-	2'-2.5'	1 Gal.	Full Plants, 2.5' O.C.
	MP3	696	Monarda pennsylvanica / Northern Bayberry	-	2'-2.5'	#5 cont.	Full Plants, 2.5' O.C.
	PM	293	Prunus mume / Beach Plum	-	2'-2.5'	1 Gal.	Full Plants, 2.5' O.C.
	RR	1,298	Rosa rugosa / Beach Rose	-	2'-2.5'	#5 cont.	Full Plants, 2.5' O.C.
GROUND COVERS							
	LMB	1,024	Liriope muscari 'Big Blue' / Big Blue Lilyturf	-	-	1 Gal.	Full Plants, 12" O.C.
ORNAMENTAL GRASSES							
	AB	10,889	Amphiphi brevifolius / American Beachgrass	-	-	Plugs	12" O.C., 16" HT., 2 stem minimum
	CAK	36	Calamagrostis x acutiflora 'Karl Foerster' / Feather Reed Grass	-	-	#5 cont.	Full Plants, 2.5' O.C.
PERENNIALS							
	EPM	416	Echinacea purpurea 'Magnus' / Magnus Purple Coneflower	-	-	2 Gal.	Full Plants, 15" O.C.
	NN	536	Nipponanthemum nipponicum / Montauk Daisy	-	-	2 Gal.	Full Plants, 15" O.C.
	RFD	114	Rudbeckia fulgida 'Goldstrum' / Black-Eyed Susan	-	-	2 Gal.	Full Plants, 15" O.C.

(40' WIDE R.O.W. PER REF. #3)



Planting Plan

Ocean Grove North End Development
Ocean Grove, New Jersey

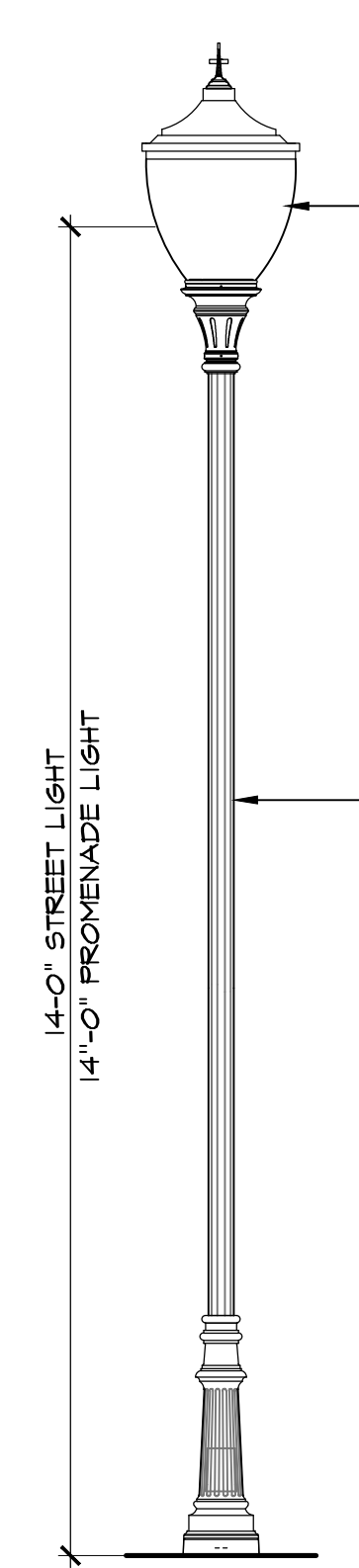
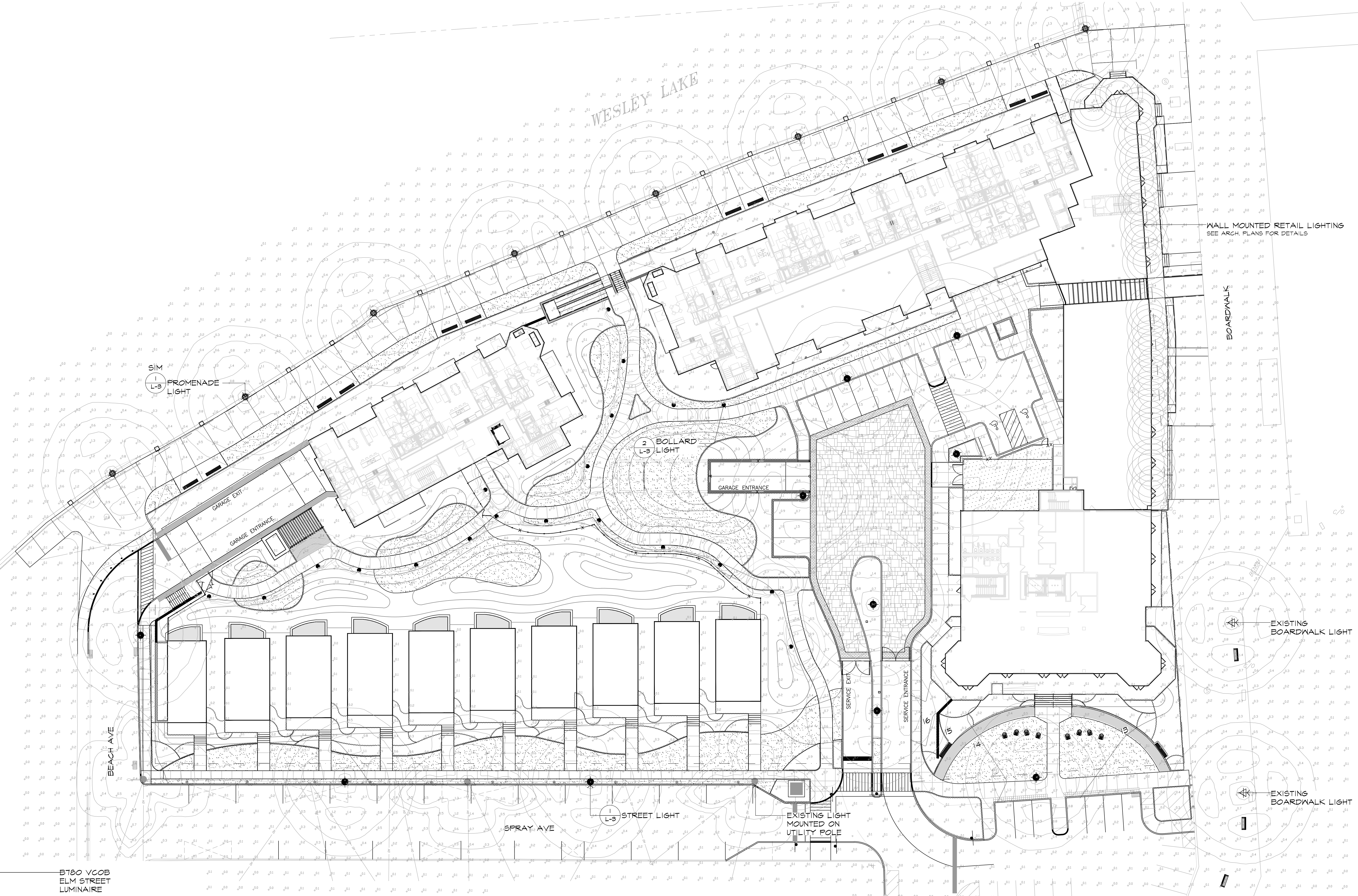
MELILLO+BAUER ASSOCIATES
Landscape Architecture
200 Union Avenue
Bridle, New Jersey 08730
T 732.528.0664
F 732.528.1077

THOMAS B. BAUER
Thomas Bauer
N.J. LICENSED
LANDSCAPE ARCHITECT
NO. A5000019

NO.	DATE	REVISION
1	06/06/24	REVISED PER COMMENTS

SCALE: 1"=20'
DATE: 2019.07.08 JOB NO.: 19-109

DRAWING NO.
L-2



POLE LIGHT:
AS MFG. BY: STERNBERG LIGHTING
800-621-3376

STREET POLE:
3413F4/F6T
PROMENADE POLE:
3410FF4/F6T

LUMINAIRE: FT-B780-...-VCOB-4L30TS-MDL02-A

NOTE:
-SHOP DRAWINGS TO BE PROVIDED TO LANDSCAPE ARCHITECT FOR REVIEW AND APPROVAL.
-LIGHTING SHALL BE PROVIDED BY FIXTURES WITH A MOUNTING HEIGHT NOT MORE THAN FOURTEEN (14) FEET, MEASURED FROM GROUND LEVEL TO THE CENTERLINE OF THE LIGHT SOURCE.

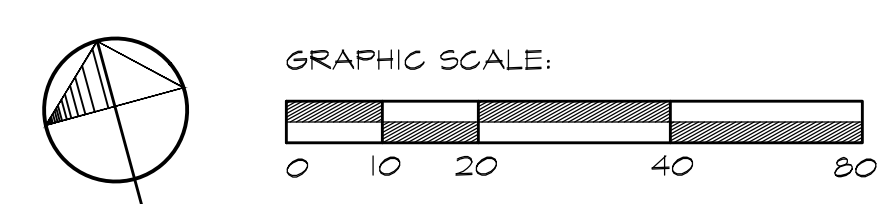


BOLLARD LIGHT:
AS MFG. BY: HESS AMERICA
DIST. BY: HESS AMERICA
1-864-481-3535
WWW.HESSAMERICA.COM

MODEL #: LN950

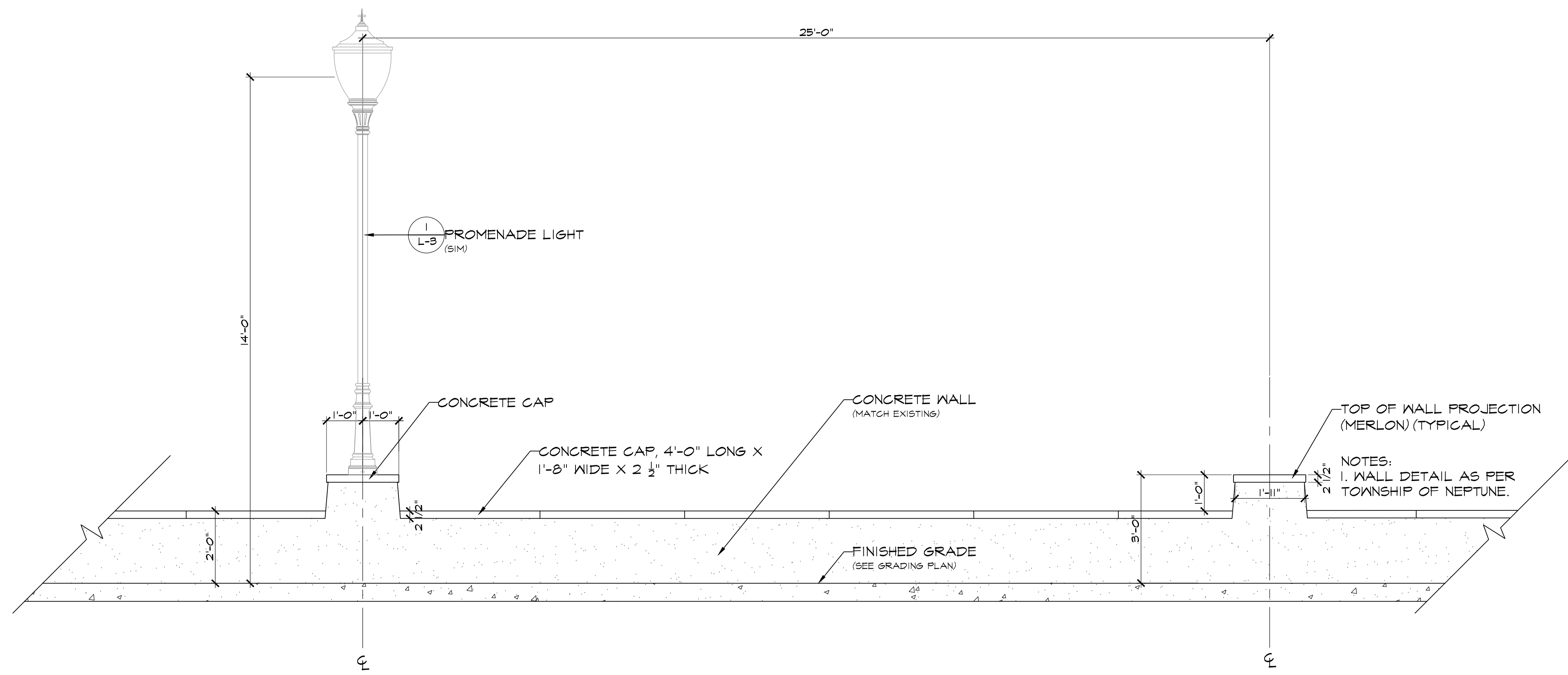
NOTE:
-SHOP DRAWINGS TO BE PROVIDED TO LANDSCAPE ARCHITECT FOR REVIEW AND APPROVAL.

KEY:	
	BOLLARD LIGHT
	POLE LIGHT
	PROMENADE LIGHT
	WALL MOUNTED LIGHT
	EX. BOARDWALK LIGHT
	EX. UTILITY POLE LIGHT



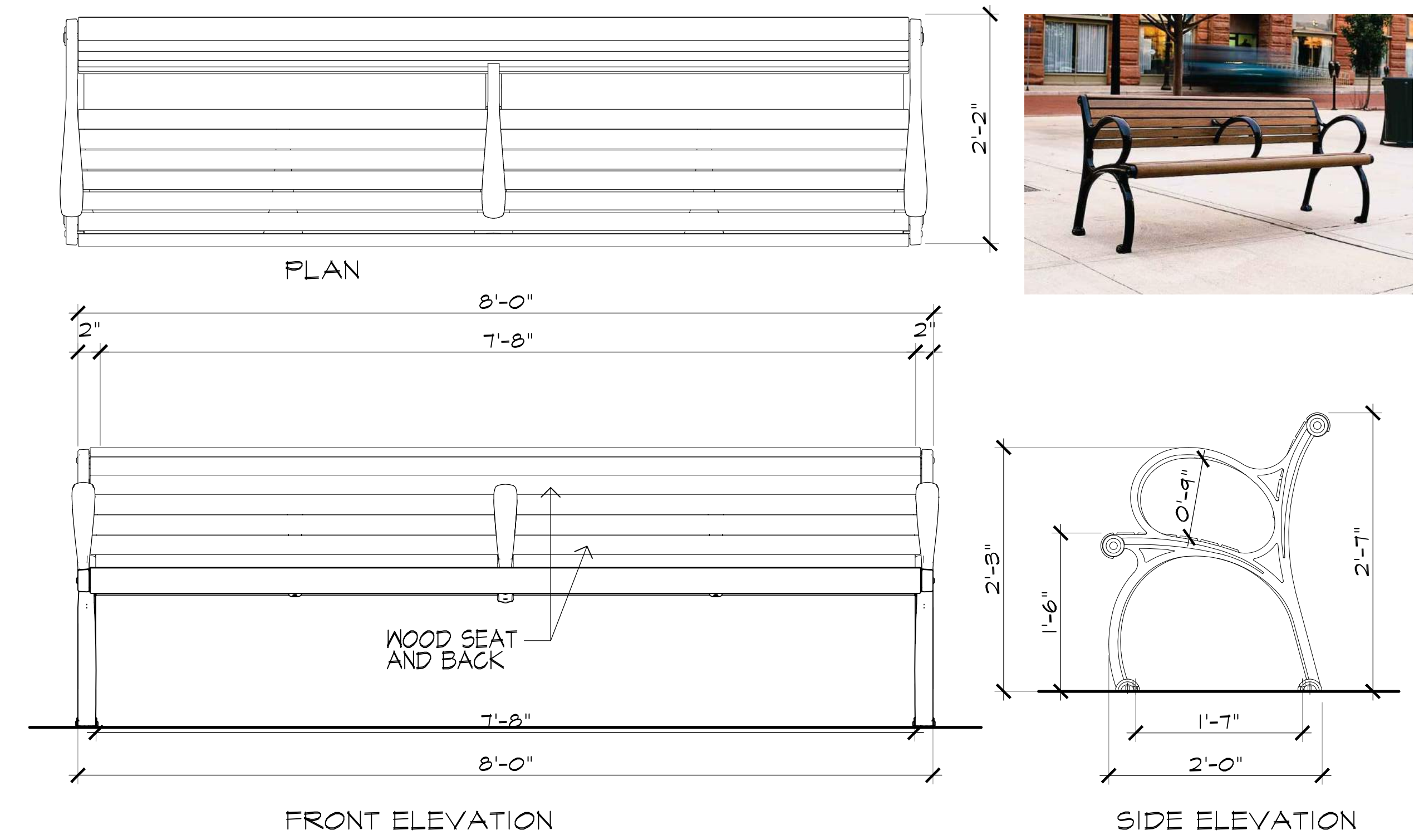
1
L-3 **DETAIL: STREET POLE LIGHT**
SCALE: 1/2"=1'-0"

2
L-3 **DETAIL: BOLLARD LIGHT**
SCALE: N.T.S.



1 ELEVATION: WESLEY LAKE MERLON WALL

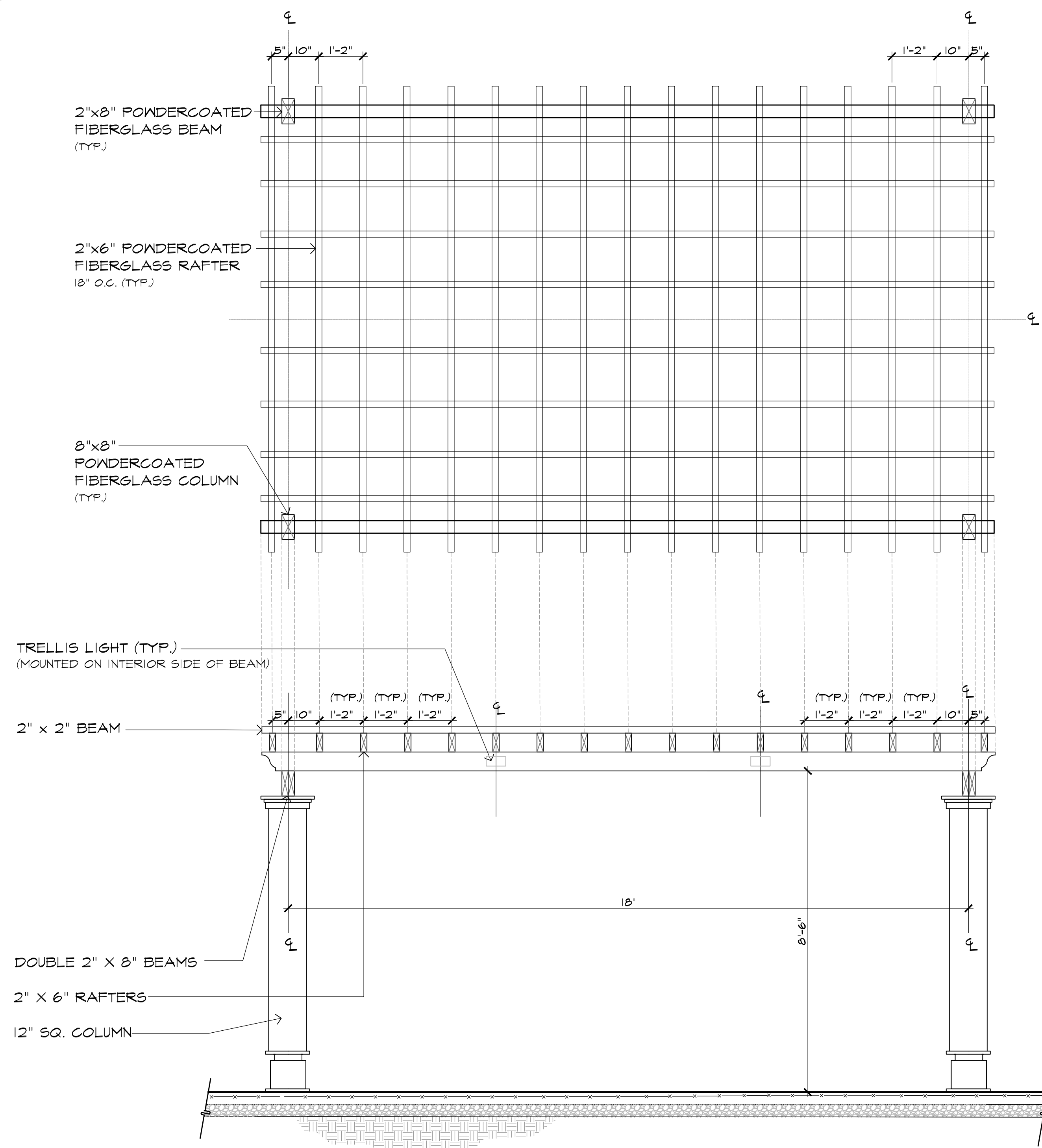
SCALE: 1/2"=1'-0"



96" PLAINWELL BENCH
 MODEL: PLAINWELL - BACKED BENCH, SURFACE MOUNTED, ALUMINUM WITH END ARMS & ONE CENTER ARM
 FINISH: IPE SEATING SURFACE, POWDER COAT FRAME - COLOR BLACK
 MFG. BY: LANDSCAPE FORMS, 800-521-2546
 OR APPROVED EQUAL - CONTRACTOR SHALL SUBMIT SHOP DRAWINGS FOR APPROVAL PRIOR TO CONSTRUCTION
 INSTALL PER MFG. RECOMMENDATIONS

2 DETAIL: BENCH

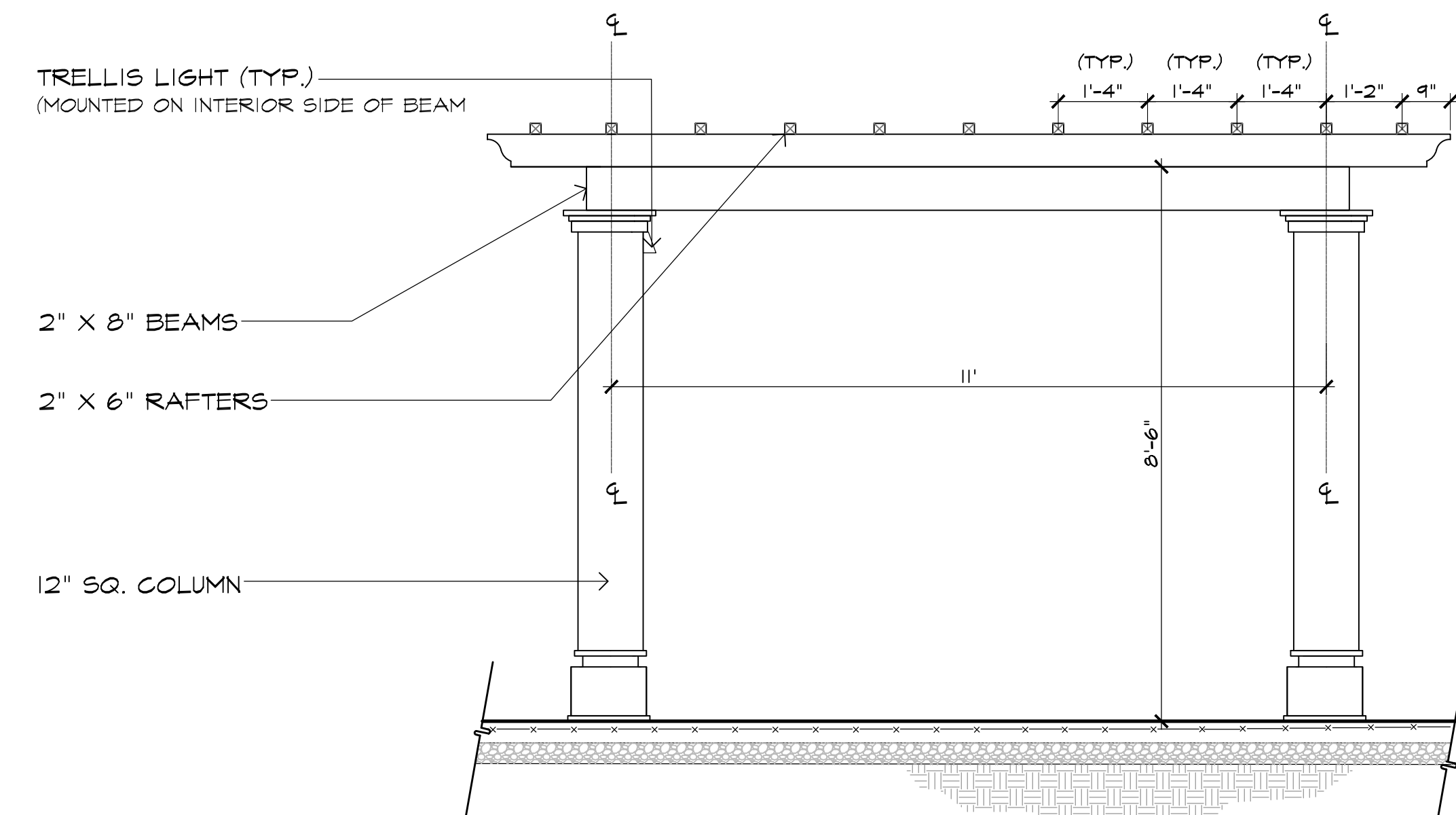
SCALE: 1"=1'-0"



ELEVATION A

SCALE: 1/2"=1'-0"

TRELLIS STRUCTURE AND COMPONENTS
 COLOR: WHITE
 AS MFG. BY:
 STRUCTURAL PERGOLA SYSTEMS
 CELL 752-864-4512 FAX 752-244-1238
 WWW.STRUCTURALPERGOLASYSTEMS.COM
 INSTALL PER MANUFACTURERS RECOMMENDATIONS
 NOTE: STRUCTURE SHALL INCLUDE ELECTRICAL ACCESS/PROVISIONS FOR TRELLIS LIGHT.
 NOTE: CONTRACTOR SHALL SUBMIT ENGINEERED SHOP DRAWINGS FOR REVIEW & APPROVAL TO L.A. PRIOR TO FABRICATION
 CONTRACTOR SHALL SUBMIT SAMPLES TO L.A. AND OWNER'S REP FOR APPROVAL PRIOR TO ORDERING



ELEVATION B

SCALE: 1/2"=1'-0"



WESTCHESTER PICKET FENCE
 SKU: WESTCHESTER PICKET FENCE
 AS MFG. BY:
 WALPOLE OUTDOORS
 (800)-949-6848
 DIST. BY:
 BAIN'S OUTDOOR LIVING
 125 EAST RIVER ROAD, RUMSON, NJ, 07160
 (732)-930-9210
 INSTALL PER MFG. SPECIFICATIONS.

4 DETAIL: FENCE

SCALE: N.T.S.



ADIRONDACK
 MODEL #: 03 UPRIGHT ADIRONDACK
 COLOR: TO BE SELECTED BY L.A.
 SUBMIT SAMPLE TO L.A. FOR APPROVAL
 AS MFG BY:
 C.R. PLASTICS
 1172 ERIE ST
 STRATFORD, ON
 P. 800.490.1283

5 DETAIL: ADIRONDACK CHAIR

SCALE: N.T.S.

3 DETAIL: TRELLIS

SCALE: 1/2"=1'-0"

Details

Ocean Grove North End Development
 Ocean Grove, New Jersey



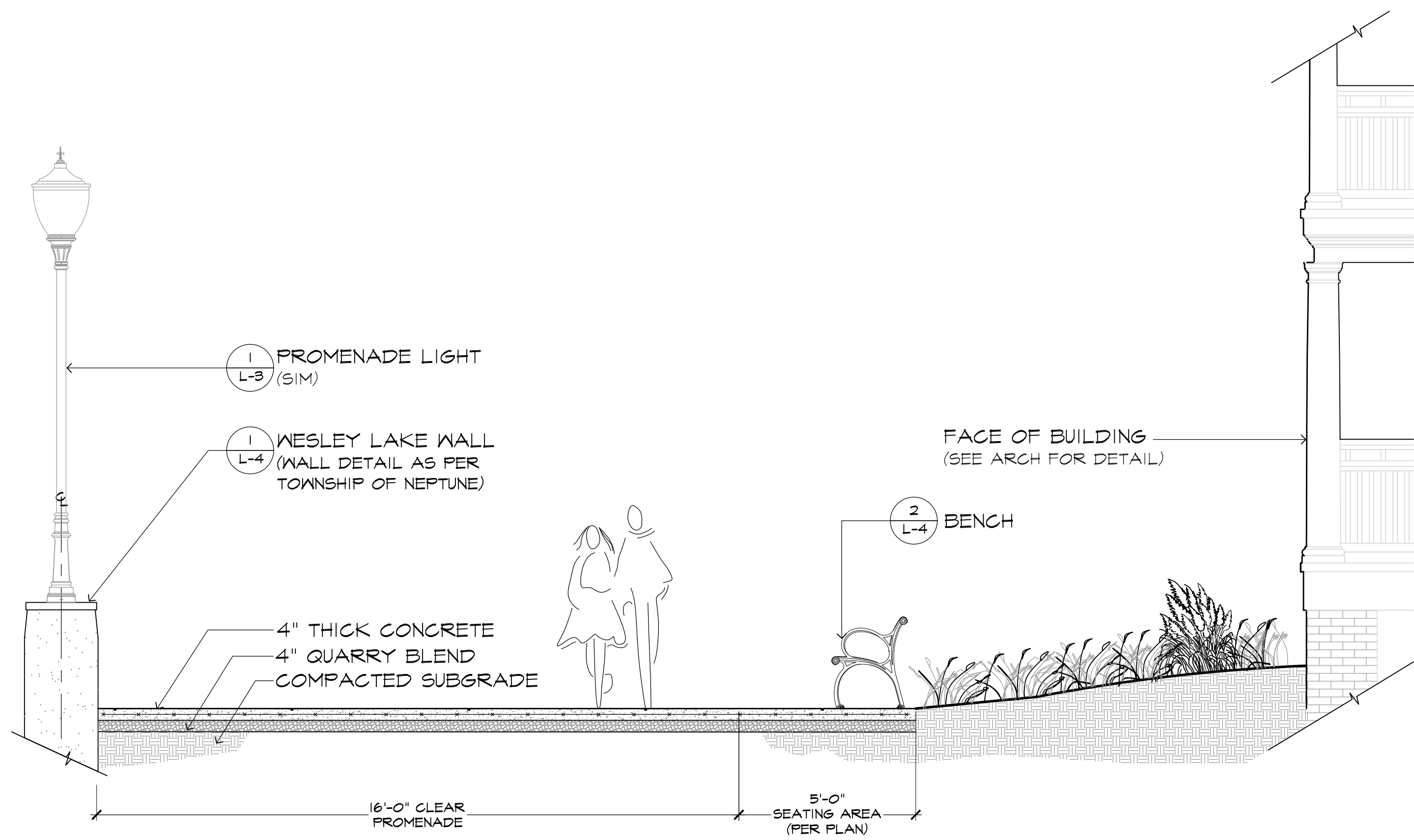
200 Union Avenue
 Brielle, New Jersey 08730
 T 732.528.0664
 F 732.528.1077

THOMAS B. BAUER
 N.J. LICENSED
 LANDSCAPE ARCHITECT
 NO. A5000019

1	06/06/24	REVISED PER COMMENTS
NO.	DATE	REVISION
SCALE: AS SHOWN		
DATE:	2019.07.08	JOB NO: 19-109

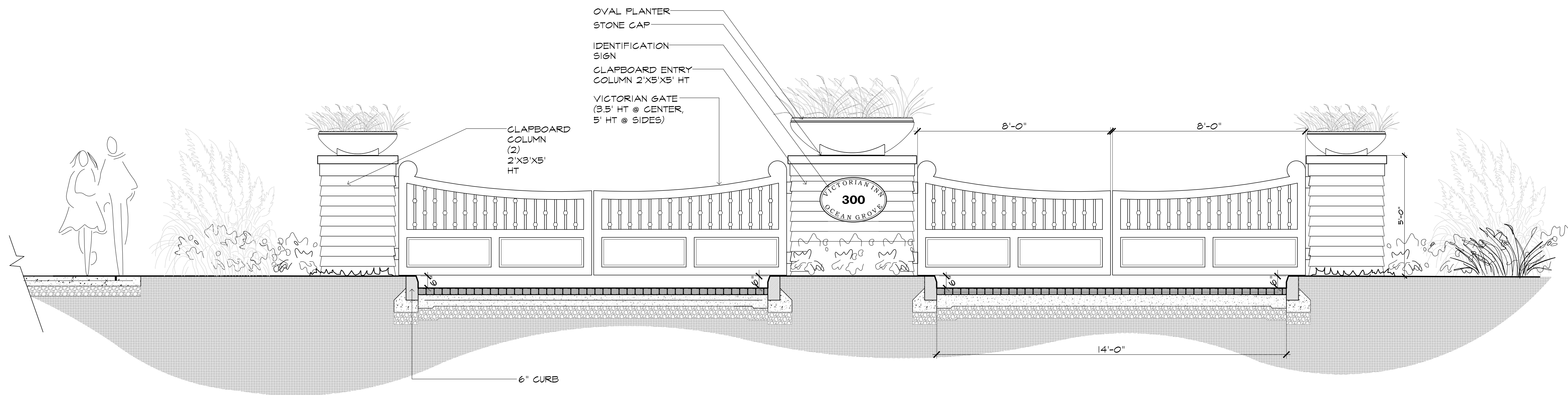
DRAWING NO.

L-4



1 L-5 SECTION: PROMENADE

SCALE: 3/8"=1'-0"



2 L-5 ELEVATION: ENTRY GATE

SCALE: 1/2"=1'-0"



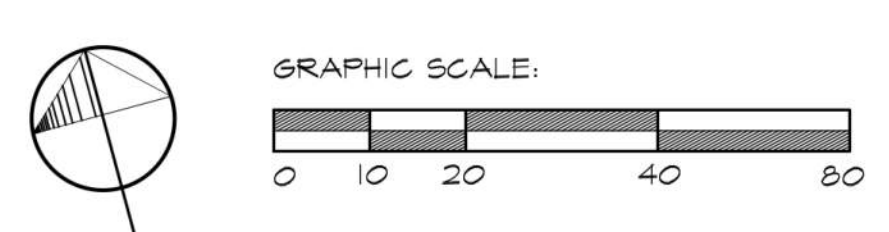
KEY:

- PRIVATE OPEN SPACE
(RESIDENTS ONLY) - 17% LOT AREA
- PUBLIC ACCESS EASEMENT AREA (LIMITED ACCESS)
- 10% LOT AREA
- OPEN SPACE AREA - 17% LOT AREA
- TOTAL OPEN SPACE - 44% LOT AREA
- PUBLIC PROMENADE EASEMENT AREA (24/7 PUBLIC ACCESS)
(NOT PART OF OPEN SPACE CALCULATION)
- VIEW CORRIDOR

MELILLO+BAUER ASSOCIATES
Landscape Architecture
200 Union Avenue
Bridle, New Jersey 08730
T 732.528.0664
F 732.528.1077

THOMAS B. BAUER
Thomas B. Bauer
N.J. LICENSED
LANDSCAPE ARCHITECT
NO. A5000019

1	06/06/24	REVISED PER COMMENTS
NO.	DATE	REVISION
SCALE: 1"=20'		
DATE: 2019.07.08 JOB NO.: 19-109		





KEY:

- LANDSCAPE AREA
- HARDSCAPE AREA

Green Roof Diagram
-Parking Structure-

Ocean Grove North End Development
Ocean Grove, New Jersey



MELILLO+BAUER
ASSOCIATES
Landscape Architecture

200 Union Avenue
Bridle, New Jersey 08730
T 732.528.0664
F 732.528.1077

THOMAS B. BAUER
Thomas B. Bauer
N.J. LICENSED
LANDSCAPE ARCHITECT
NO. AS000019

NO.	DATE	REVISION
1	06/06/24	REVISED PER COMMENTS

DATE: 2019.07.08 JOB NO.: 19-109

DRAWING NO.
L-7

