

BOUNDARY & TOPOGRAPHIC SURVEY OF BLOCK 1904, LOT 23 634 WAYSIDE ROAD

TOWNSHIP OF NEPTUNE MONMOUTH COUNTY NEW JERSEY

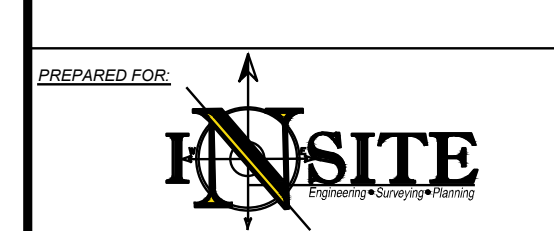


Table with 2 columns: Item, Description. Includes call before you dig, NJ one call, and utility symbols for electric, gas, water, sewer, etc.

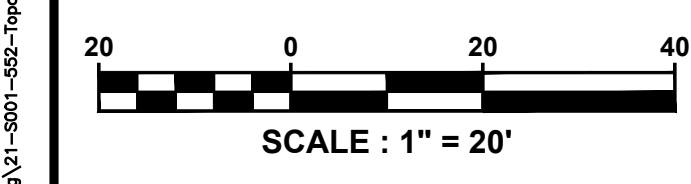
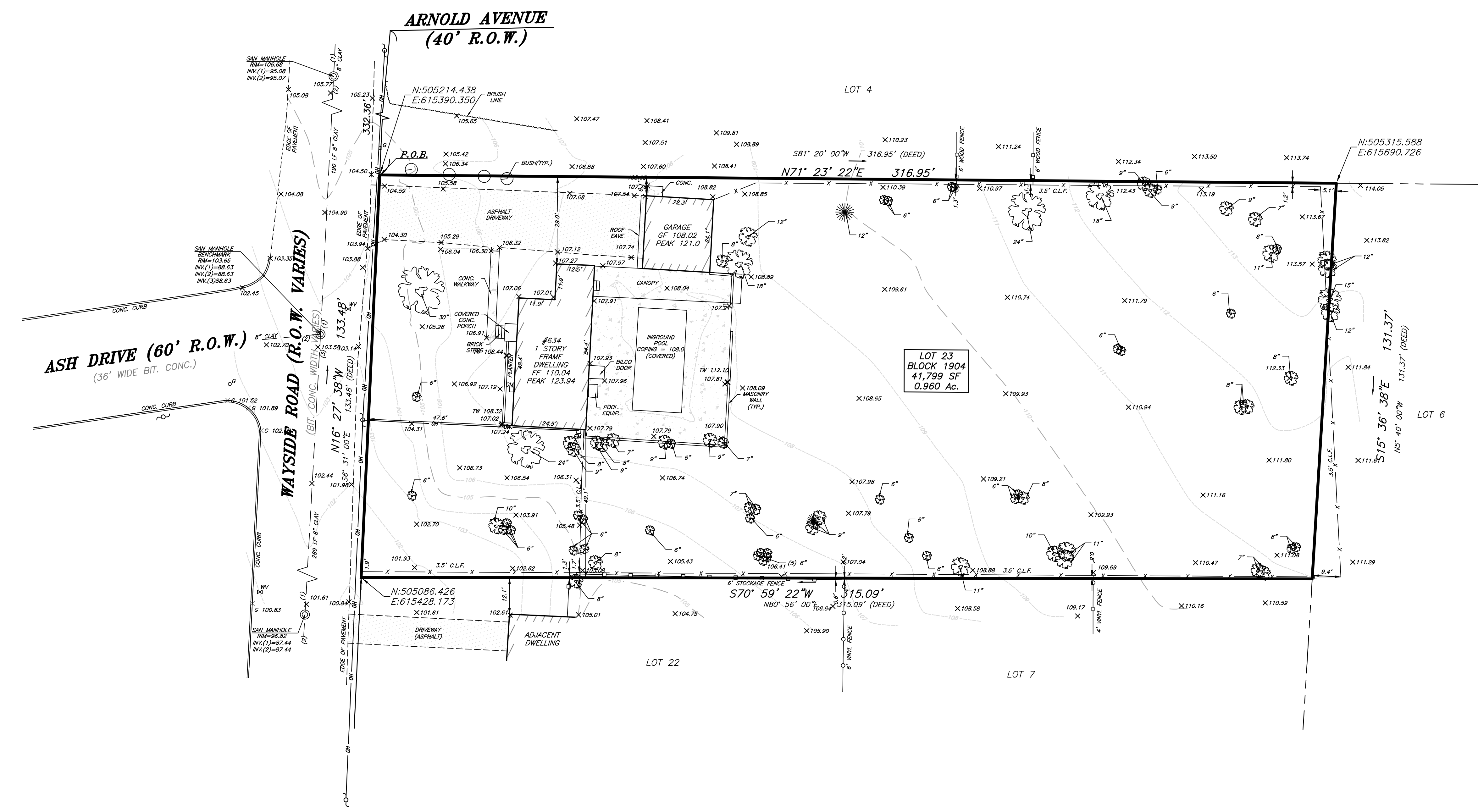
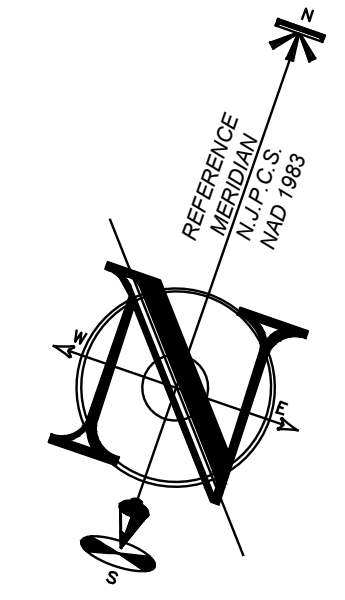
INSITE Surveying logo and contact information: InSite Surveying, LLC, 1955 ROUTE 34, SUITE 1A, WALL, NJ 07719

REVISIONS

Table with 3 columns: Rev #, Date, Comment. Shows revision 1 on 04/11/23 for adding a benchmark and revision 0 on 01/11/23 for initial release.

CERTIFICATION

JUSTIN J. WEDGES, P.L.S., C.F.S. PROFESSIONAL LAND SURVEYOR NJ LIC. NO. GS43362 CERTIFIED FLOODPLAIN SURVEYOR NJ LIC. NO. NJ-044



LEGEND table with 2 columns: Symbol, Description. Lists symbols for boundary lines, contours, spot elevations, buildings, walls, gas, water, inlets, storm, sanitary main, overhead wire, electric, telephone, utility poles, hydrants, sign posts, fences, light fixtures, test pit locations, grade flow arrows, and swale center lines.

SURVEY NOTES: THIS IS TO CERTIFY THAT THIS SURVEY IS ACCURATE, AND THAT THIS DRAWING IS A TRUE REPRESENTATION OF ACTUAL CONDITIONS EXISTING ON THE PROPERTY... A WRITTEN WAIVER AND DECLARATION NOT TO SET CORNER MARKERS HAS BEEN OBTAINED FROM THE ULTIMATE USER PURSUANT TO P.L. 2003 C. 14 (C45-9-36.3) AND N.J.A.C. 17:40 - 5.1(D)...

File: S:\1904\2321 - InSite - Boundary & Topographic Survey of Block 1904, Lot 23 - 634 Wayside Road, Neptune, NJ 07719\2321 - InSite - Boundary & Topographic Survey of Block 1904, Lot 23 - 634 Wayside Road.dwg, Date: 04/11/23, 10:00 AM, User: jwedges