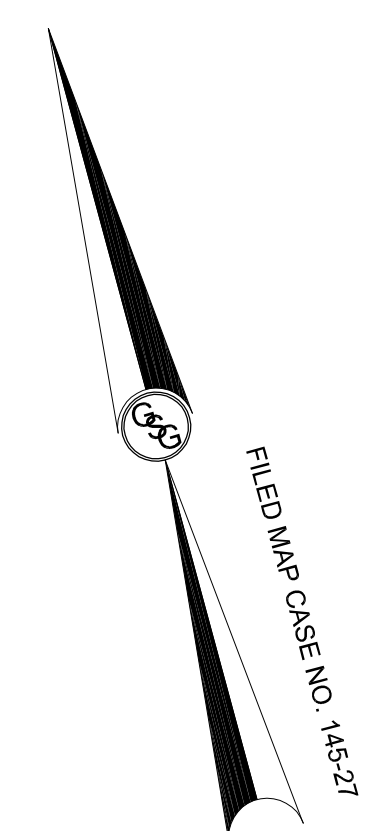
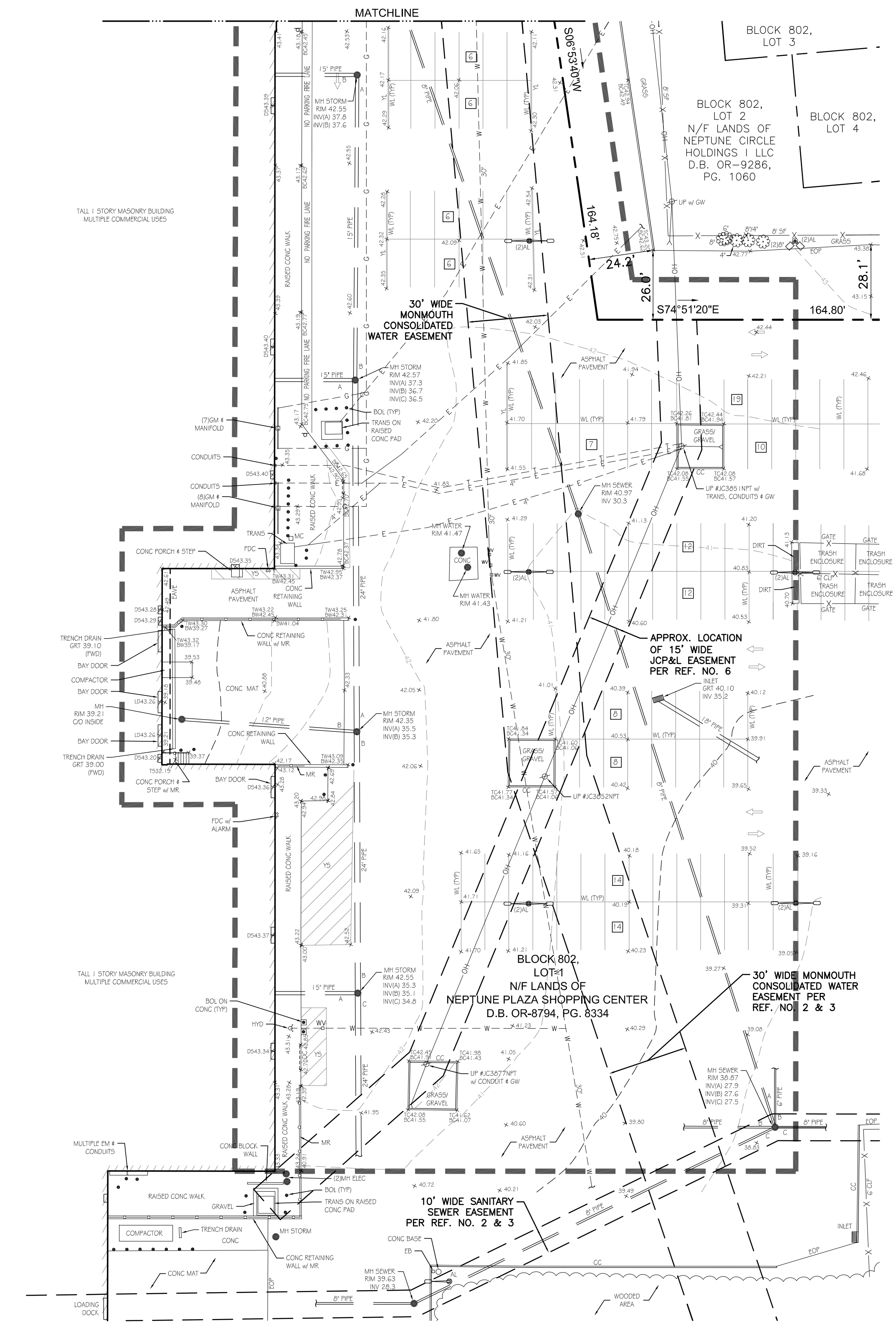
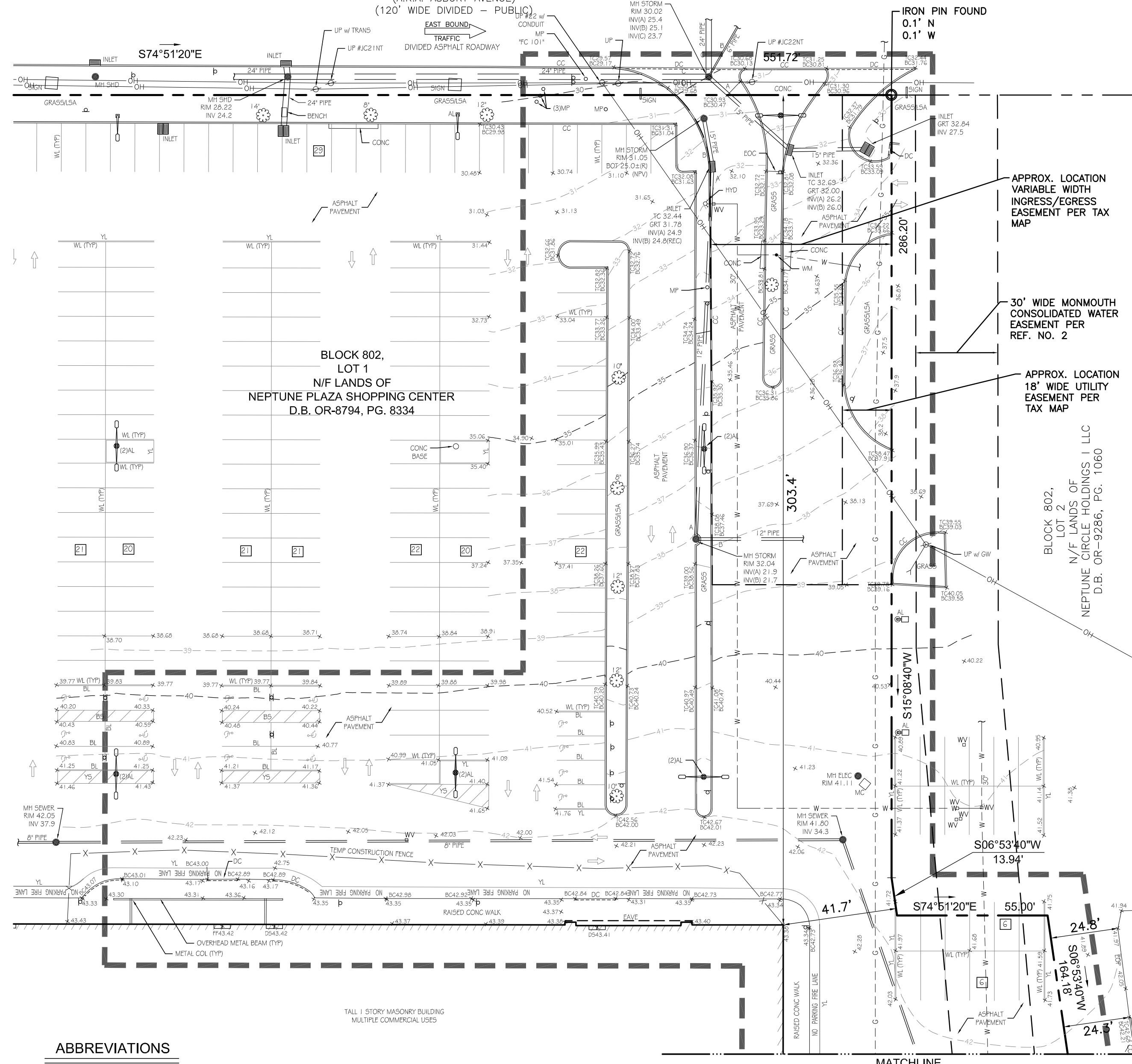


NEW JERSEY STATE HIGHWAY ROUTE 66

(A.K.A. ASBURY AVENUE)
(120' WIDE DIVIDED - PUBLIC)



VICINITY MAP

ABBREVIATIONS

- AL AREA LIGHT
- BL BLUE LINE
- BOL BOLLARD
- BOI BOTTOM OF STRUCTURE
- BS BLUE STRIPING
- CC CONCRETE CURB
- CLF CHAIN LINK FENCE
- CO CLEANOUT
- COL COLUMN
- CON CONCRETE
- DC DEPRESSURED CURB/CONCRETE
- EB ELECTRIC BOX
- ELEC ELECTRIC
- EM ELECTRIC METER
- EOC EDGE OF CONCRETE
- EOP EDGE OF PAVEMENT
- FDC FIRE DEPARTMENT CONNECTION
- FND FILLED WITH DIRT/DEBRIS
- GM GAS METER
- GW GUY WIRE
- GRT GRATE
- HYD HYDRANT
- INV INVERT
- LSA LANDSCAPED AREA
- MC METAL COVER
- MH MANHOLE
- MP METAL POST
- MR METAL RAILING
- NPV NO PIPES VISIBLE
- RO INFORMATION OBTAINED FROM REFERENCE MAPPING
- REC RECESSED
- SF STOCKADE FENCE
- TEMP TEMPORARY
- TRANS TRANSFORMER
- TYP TYPICAL
- UP UTILITY POLE
- WL WHITE LINE
- WM WATER METER
- YL YELLOW LINE
- YS YELLOW STRIPING

MAP LEGEND

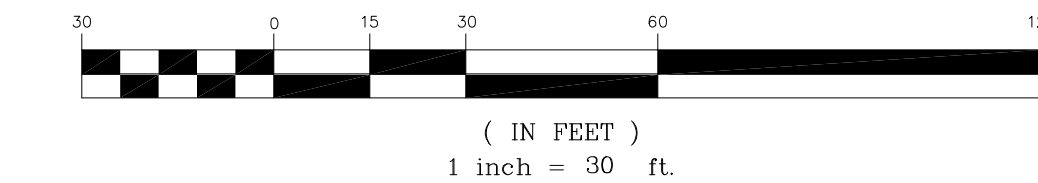
- PROPERTY LINE
- LIMITS OF DETAILED TOPOGRAPHY
- EXIST. BUILDING FOOTPRINT AT GROUND LEVEL & DOORWAY
- FENCE
- RAILING
- EXISTING CONTOUR
- x EXISTING SPOT ELEVATION
- x EXIST. TOP OF CURB ELEVATION
- x EXIST. GUTTER ELEVATION
- x EXIST. TOP OF WALL ELEVATION
- x EXIST. BOTTOM OF WALL ELEVATION
- x DOOR SILL ELEVATION
- x FINISHED FLOOR ELEVATION
- x EXIST. TOP OF LOADING DOCK ELEVATION
- x EXIST. TOP STEP ELEVATION
- APPROX. LOCATION U.G. WATER LINE & SIZE PER UTILITY MARKOUT
- APPROX. LOCATION U.G. GAS LINE PER UTILITY MARKOUT
- APPROX. LOCATION U.G. ELECTRIC LINE & SIZE PER UTILITY MARKOUT
- APPROX. LOCATION U.G. TELEPHONE LINE PER UTILITY MARKOUT
- HYDRANT
- WATER VALVE
- GAS METER
- ELECTRIC METER
- AREA LIGHT
- MANHOLE
- INLET
- FIRE DEPARTMENT CONNECTION
- OVERHEAD WIRES
- UTILITY POLE
- GUY WIRE
- BOLLARD
- SIGN
- ACCESSIBLE PARKING SPACE
- TRAFFIC FLOW ARROW
- PARKING COUNT
- DENOTES OFFSET OF STRUCTURE AT GROUND LEVEL RELATIVE TO PROPERTY LINE
- WOODS LINE
- TREE & TRUNK SIZE

UTILITIES:
THE FOLLOWING COMPANIES WERE NOTIFIED BY NEW JERSEY ONE-CALL SYSTEM (1-800-272-1000) AND REQUESTED TO MARK OUT UNDERGROUND FACILITIES AFFECTING AND SERVICING THIS SITE. THE UNDERGROUND UTILITY INFORMATION SHOWN HEREON IS BASED UPON THE UTILITY COMPANIES RESPONSE TO THIS REQUEST.
SERIAL NUMBER(S): 230962250

UTILITY COMPANY
AT&T CORPORATION
VERIZON
CABLEVISION OF MONMOUTH
COMCAST CABLEVISION OF NEW JERSEY
JERSEY CENTRAL POWER & LIGHT
NEW JERSEY NATURAL GAS COMPANY
NEPTUNE TOWNSHIP SEWER COMPANY
NEW JERSEY AMERICAN WATER

NOT ALL UTILITY COMPANIES RESPONDED TO THE MARKOUT REQUEST

GRAPHIC SCALE



SEE SHEET 1 OF 2 FOR NOTES AND REFERENCES

BOUNDARY, LOCATION & PARTIAL TOPOGRAPHIC SURVEY
BLOCK 802, LOT 1
2200-2250 ASBURY AVENUE (A.K.A. NJSH ROUTE 66)
NEPTUNE CITY, TOWNSHIP OF NEPTUNE
COUNTY OF MONMOUTH
STATE OF NEW JERSEY

GALLAS SURVEYING GROUP
2885 U.S. ROUTE 1
NORTH BRUNSWICK, NJ 08902
TELE: 732-422-6700
FAX: 732-940-8786
www.gallasurvey.com

DATE	SCALE	DRAWN:	CHECKED:
05-10-2023	1"=30'	R.M.C.	D.A.H./C.J.O.
FIELD DATE	FIELD BOOK	PAGE	FIELD CREW
04-12 TO 04-14-2023	190	82 & 102	D.A./M.C./J.V./M.W.C.

FILE NO.:	DRAWING NAME/SHEET NO.
G23050	G23050.DWG 2 OF 2



GREGORY S. GALLAS
NEW JERSEY PROFESSIONAL LAND SURVEYOR 38324
NEW JERSEY CERTIFICATE OF AUTHORIZATION #246A2817000