

1  
E2.0A  
SCALE  
3/32" = 1'-0"

SHEET NOTES:

- ALL LED STRIP FIXTURES (EXCEPT EM-NL) ARE FACTORY CONNECTED TO THE SAME WIRING HARNESS CONDUCTOR COLOR AS DESIGNATED BY FIXTURE OEM INSTRUCTIONS AND SHALL BE CONNECTED TO SWITCHED PORTION OF LIGHTING CIRCUITING, POWERING ALL LED, TUBE LAMPS WITH THE FIXTURE. (FIXTURE TYPES C, D, CC, & I)
- EM LIGHT FIXTURE IS SWITCHED DURING NORMAL OPERATION. UPON LOSS OF POWER, ONE LED TUBE LAMP OF THIS FIXTURE SHALL BE ENERGIZED VIA THE EMERGENCY FIXTURE, ONBOARD EMERGENCY LIGHTING INVERTER. (FIXTURE TYPES EM-C & EM-H)
- ALL PERIMETER SALES FLOOR LIGHTS SHALL BE INSTALLED AT 2'-0" OFF ADJACENT WALL TO MIDDLE OF LIGHT FIXTURE. SEE DETAIL 5-E4.0.
- ALL LED STRIP FIXTURES ARE SHIPPED WITH A 2 - CIRCUIT, COLOR CODED OEM WIRING HARNESS. (FIXTURE TYPES C, D, I, CC, EM-C, & EM-I)
- BACKROOM LIGHTING SHALL BE CLASSIFIED AS GROUP 'A' LIGHTING FOR THE LIGHTING CONTROL PANEL (L.C.P.).
- MOUNT ALL EXPOSED STRUCTURE SHOWING AT 15'-0" A.F.F. MAX. SEE DETAILS 4-E4.0, 8-E4.0, AND 18-E4.0.
- MAINTAIN THE CIRCUITING AS SHOWN. CIRCUITS ARE REQUIRED AS SHOWN FOR THE LIGHTING CONTROL PANEL (L.C.P.).
- CEILING SPACERS ON SURFACE MOUNTED STRIP LIGHTS SHALL BE PLACED 2'-0 FROM END OF LIGHT FIXTURE AND 4'-0" ON CENTER ALONG ROW FROM THERE. EVERY FIXTURE SHALL HAVE 2 SPACERS. EACH CEILING SPACER SHALL HAVE CEILING WIRE WITHIN 6" OF SPACER. SEE DETAIL 16-E4.0.
- THE LIGHTING CONTROL PANEL (L.C.P.) IS PROVIDED WITHIN THE CPI SWITCHGEAR. ALL INTERIOR AND EXTERIOR LIGHTING AND DESIGNATED POWER CIRCUITS ARE TO BE CONTROLLED BY THE L.C.P.
- ALL BREAKERS ARE TO BE LABELED.
- SEE DRAWING E5.0 FOR ALL ELECTRICAL DEVICE TAGS, AND ELECTRICAL EQUIPMENT REQUIREMENTS.
- EXIT SIGNS SHOWN ARE CONSIDERED A MINIMUM. CONTRACTOR TO ADD EXIT SIGNS AS REQUIRED DUE TO FINAL FURNITURE LAYOUT. PER LOCAL AUTHORITIES.
- ALL LIGHTING CIRCUITS, OTHER THAN EMERGENCY/NIGHT LIGHT CIRCUITS, ARE TO BE ROUTED THROUGH CONTACTORS AND CONTROLLED BY L.C.P. ALL NECESSARY INFORMATION SHALL BE PROVIDED BY HOBBY LOBBY. CONTACTORS ARE NOT SHOWN ON DRAWINGS.
- ALL WIRING SHALL BE SINGLE CONDUCTOR, COPPER AND SHALL BE ROUTED IN SUITABLE CONDUIT.
- MC CABLE AND OTHER CABLE TYPES ARE NOT TO BE USED; EXCEPT THAT MC CABLE MAY BE USED AS LIGHT FIXTURE WHIPS ABOVE CEILINGS AND NO MORE THAN SIX (6) FEET IN LENGTH.
- HOBBY LOBBY SHALL FURNISH ADDITIONAL EMERGENCY LIGHT FIXTURES, BEYOND THOSE SHOWN, IF DETERMINED NECESSARY TO SATISFY LIGHTING LEVELS PER THE AUTHORITY HAVING JURISDICTION. E.C. SHALL BE RESPONSIBLE FOR INSTALLATION. A BLACKOUT TEST OF EMERGENCY AND EXIT LIGHTS WILL BE REQUIRED BEFORE OCCUPANCY. THE E.C. SHALL HAVE A REPRESENTATIVE ON SITE AT THE TIME OF OCCUPANCY INSPECTION TO TURN ANY NEEDED DISCONNECTS OFF.
- ELECTRICAL CONTRACTOR SHALL COORDINATE NEW LIGHTING FIXTURE LOCATIONS WITH ALL EXISTING AND NEW SPRINKLER LOCATIONS.
- 'NL' - NIGHT LIGHT. NIGHT LIGHTS DO NOT RUN THROUGH LIGHTING CONTROL PANEL (L.C.P.). NIGHT LIGHTS ARE CONNECTED TO AN UN-SWITCHED CONDUCTOR OF LIGHT FIXTURE, FACTORY INSTALLED WIRING HARNESS.
- LED STRIP FIXTURES INTENDED FOR NIGHT LIGHT (NL) OPERATION (ONLY) REQUIRE A FIELD WIRING MODIFICATION TO THE WIRING HARNESS AND ASSOCIATED TERMINATIONS. THE LED DRIVER OF DESIGNATED NIGHT LIGHTS (NL) MUST BE DISCONNECTED FROM THE SWITCHED CONDUCTOR AND CONNECTED TO THE UN-SWITCHED WIRING HARNESS CONDUCTOR TO ENSURE UN-SWITCHED, 24/7 OPERATION (FIXTURE TYPES 'C' AND 'I').
- THE OWNER HAS BEEN NOTIFIED THAT THIS PROJECT REQUIRES A LIGHTING COMMISSIONING PLAN, PER C408.2.1, 2015 IBC, DEVELOPED BY REGISTERED DESIGN PROFESSIONAL OR APPROVED AGENCY AND PROVIDED TO DEVELOPMENT SERVICES WITH CONSTRUCTION DOCUMENTATION.
- INTERIOR LIGHTING MANUAL OVERRIDE PUSH BUTTON SWITCHES LOCATED IN THE RECEIVING AREA FOR CIRCUITS LISTED BELOW. THERE ARE A TOTAL OF 5 OVER-RIDE SWITCHES (PUSH BUTTONS) AS DEFINED BELOW:  
SWITCH 1 (GROUP A):  
H3 CIRCUIT #'S - 1, 2, 3, 4, 7, 9, 11, 13, 15, 17, 19, 21, 31, 33, & 35  
SWITCH 2 (GROUP B):  
H3 CIRCUIT #'S - 8, 10, 12, 14, 16, 18, 20  
SWITCH 3 (GROUP C):  
H3 CIRCUIT #'S - 34  
SWITCH 4 (GROUP D):  
H3 CIRCUIT #'S - 40  
SWITCH 5 (GROUP E):  
SPARE
- ELECTRICAL CONTRACTOR SHALL PROVIDE ALL ROUGH-IN BOXES AND CONDUITS REQUIRED TO CONNECT LIGHTING CONTROLS FURNISHED BY OTHERS. ADDITIONALLY E.C. SHALL PROVIDE ALL LOW VOLTAGE WIRING AND CONNECTIONS TO LIGHTING CONTROL EQUIPMENT AS REQUIRED BY THE LIGHTING CONTROL EQUIPMENT SUPPLIER.

KEYED NOTES:

- NOT USED.
- NOT USED.
- NOT USED.
- CIRCUIT THROUGH LIGHTING CONTACTOR, (GROUP A).
- CIRCUIT THROUGH LIGHTING CONTACTOR, (GROUP B).
- EXIT SIGNS ARE POWERED.
- EXIT SIGNS ARE POWERED AND SHALL ALSO SERVE EXTERIOR REMOTE HEAD. CONNECT TO CIRCUIT AHEAD OF LIGHTING CONTACTOR.
- NOT USED.
- NOT USED.
- MOUNT OR SUSPEND FIXTURE AT 15'-0" ABOVE FINISHED FLOOR. MOUNT TIGHT TO STRUCTURE AT BOTTOM CHORD OF JOIST OR SUSPEND UTILIZING DETAILS 4-E4.0, 8-E4.0, AND 18-E4.0.
- NOT USED.
- EXTERIOR EMERGENCY REMOTE DUAL HEAD FIXTURE SHALL BE CENTERED ABOVE EXTERIOR DOOR AND FED FROM NEAREST INTERIOR EXIT SIGN EQUIPPED WITH HIGH OUTPUT BATTERY PACK. COORDINATE MOUNTING HEIGHT AND LOCATION(S) WITH ARCHITECTURAL ELEVATIONS.
- NOT USED.
- NL INDICATED LUMINAIRE IS UN-SWITCHED AND SHALL FUNCTION AS A NIGHT LIGHT. LIGHT FIXTURE IS REQUIRED 24/7. CONNECT TO THE UN-SWITCHED CIRCUIT CONDUCTOR. MODIFICATION TO FACTORY WIRING IS REQUIRED FOR THIS FIXTURE. (SEE SHEET NOTES).
- EM LIGHT FIXTURE IS SWITCHED DURING NORMAL OPERATION. UPON LOSS OF POWER, ONE LAMP OF THIS FIXTURE SHALL BE ENERGIZED VIA THE EMERGENCY FIXTURE, ONBOARD EMERGENCY LIGHTING INVERTER, EXTEND UNSWITCHED, SAME CIRCUIT THROUGH LCP FOR THIS LIGHT ROW.
- NOT USED.
- COORDINATE MOUNTING HEIGHT AND LOCATION(S) WITH ARCHITECTURAL ELEVATIONS.
- EXTERIOR EMERGENCY REMOTE DUAL HEAD FIXTURE SHALL BE CENTERED ABOVE EXTERIOR DOOR AND FED FROM NEAREST INTERIOR EXIT SIGN EQUIPPED WITH HIGH OUTPUT BATTERY PACK. FIXTURE SHALL BE MOUNTED ON SOFFIT.

CEILING LEGEND	
SYMBOL	DESCRIPTION
	ACOUSTICAL CEILING
	GYP. BOARD CEILING

LIGHTING CONTROL GROUPS	
A.	PART SALES, STAGING, OFFICE, VESTIBULE, RESTROOM, LOUNGE LIGHTING, EXHAUST FANS, VESTIBULE PLUG MOLD, VESTIBULE RECEPTACLES, LAMP, AND CHRISTMAS TREE DISPLAYS.
B.	PART SALES LIGHTING
C.	EXTERIOR WALL PACK AND CANOPY LIGHTING
D.	EXTERIOR BUILDING MOUNTED SIGN LIGHTING
E.	SITE LIGHTING, MONUMENT SIGN, REMOTE SIGNAGE.
L.C.P. = LIGHTING CONTROL PANEL	

LIGHTING CONTROLLED CIRCUITS		
QTY.	GROUP	DESCRIPTION
15	A	PART SALES, STAGING, OFFICE, VESTIBULE, RESTROOM, LOUNGE LIGHTING
21		EXHAUST FANS, VESTIBULE PLUGMOLD, VESTIBULE RECEPTACLES, LAMP, AND CHRISTMAS TREE DISPLAYS
7	B	PART SALES LIGHTING
1	C	EXTERIOR WALL PACK AND CANOPY LIGHTING
1	D	EXTERIOR BUILDING MOUNTED SIGNAGE
0	E	SITE LIGHTING, MONUMENT SIGN, REMOTE SIGNAGE

REVISION HISTORY

REV. #	DATE	DESCRIPTION
1		
2		
3		
4		
5		
6		
7		
8		
9		
10		
11		
12		
13		
14		
15		
16		
17		
18		

LIGHTING CONTROL GROUPS	
A.	PART SALES, STAGING, OFFICE, VESTIBULE, RESTROOM, LOUNGE LIGHTING, EXHAUST FAN(S), VESTIBULE PLUG MOLD, VESTIBULE RECEPTACLES, LAMP, AND CHRISTMAS TREE DISPLAYS.
B.	PART SALES LIGHTING
C.	EXTERIOR WALL PACK AND CANOPY LIGHTING
D.	EXTERIOR BUILDING MOUNTED SIGN LIGHTING
E.	SITE LIGHTING, MONUMENT SIGN, REMOTE SIGNAGE.
L.C.P. = LIGHTING CONTROL PANEL	

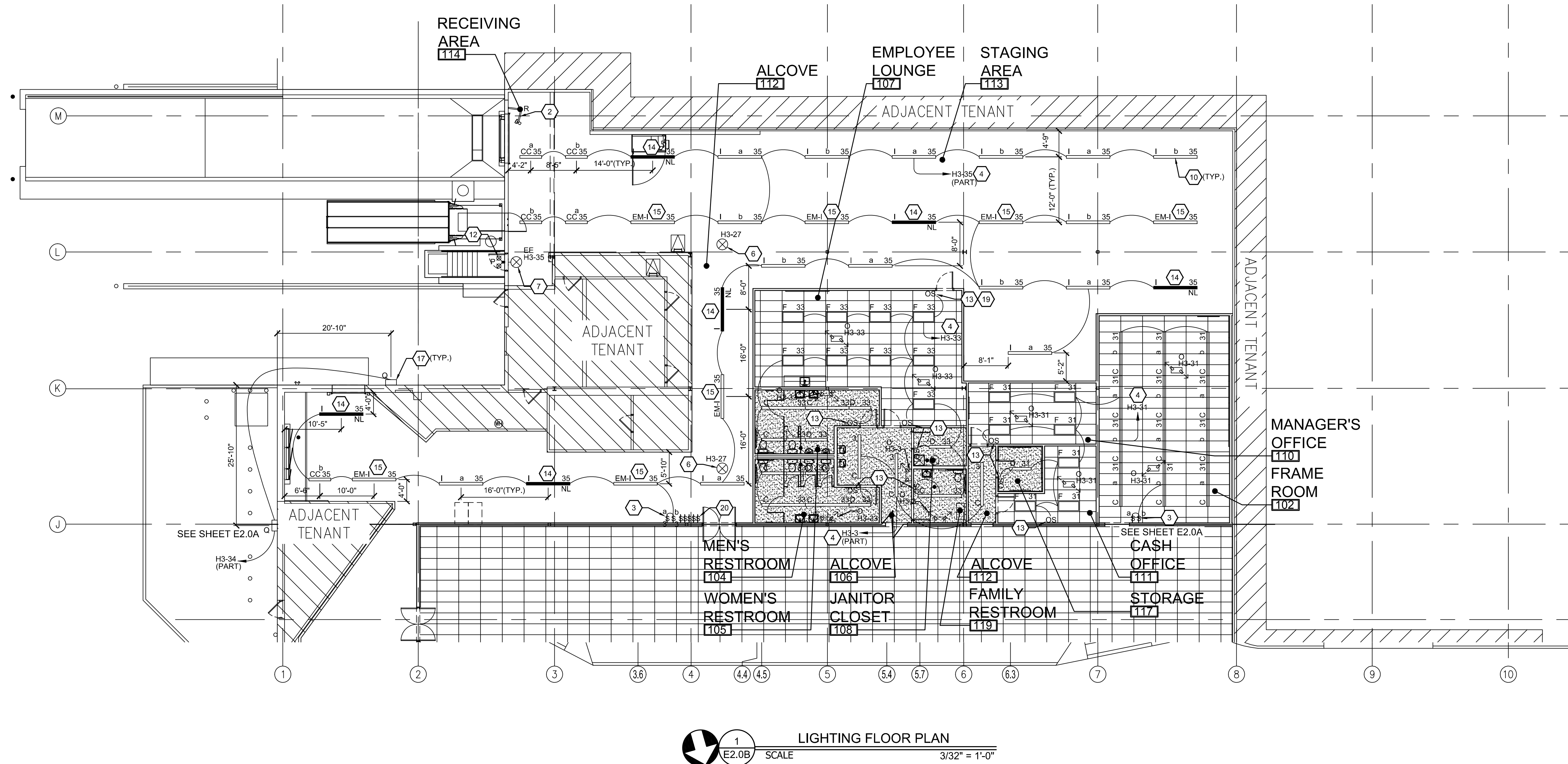
LIGHTING CONTROLLED CIRCUITS		
QTY.	GROUP	DESCRIPTION
15	A	PART SALES, STAGING, OFFICE, VESTIBULE, RESTROOM, LOUNGE LIGHTING
21		EXHAUST FAN(S), VESTIBULE PLUGMOLD, VESTIBULE RECEPTACLES, LAMP, AND CHRISTMAS TREE DISPLAYS
7		PART SALES LIGHTING
1	B	EXTERIOR WALL PACK AND CANOPY LIGHTING
1	D	EXTERIOR BUILDING MOUNTED SIGNAGE
0	E	SITE LIGHTING, MONUMENT SIGN, REMOTE SIGNAGE

KEYED NOTES: 

- |    |  |    |   |
|----|--|----|---|
| 1  | NOT USED.  | 17 | COORDINATE MOUNTING HEIGHT AND LOCATION(S) WITH ARCHITECTURAL ELEVATIONS.   |
| 2  | CONNECT TO 120V RECEPTACLE. SEE SHEET E1.0 FOR CIRCUIT.  | 18 | NOT USED.   |
| 3  | DUAL MANUAL SWITCHING FOR B-LEVEL LIGHTING.  | 19 | CONNECT IN PARALLEL WITH OCCUPANCY SENSOR WITHIN SAME ROOM.   |
| 4  | CIRCUIT THROUGH LIGHTING CONTACTOR. (GROUP A).   | 20 | REMOTE OVERRIDE LOW VOLTAGE SWITCH LOCATION. SWITCHES SHALL BE FIELD INSTALLED IN DUAL GANG BOX PROVIDED BY THE ELECTRICAL CONTRACTOR. SWITCHES AND COVER SUPPLIED BY C/P1. CONTRACTOR SHALL ROUTE AN #18/6 FROM THE C/P1 LIGHTING CONTROL PANEL TO THE REMOTE SWITCH LOCATION. SEE SHEET NOTES #21 AND #22 AND ALSO DETAIL S-E4.0. |
| 5  | NOT USED.  |    |   |
| 6  | EXIT SIGNS ARE POWERED.  |    |   |
| 7  | EXIT SIGNS ARE POWERED AND SHALL ALSO SERVE EXTERIOR REMOTE HEAD. CONNECT TO CIRCUIT AHEAD OF LIGHTING CONTACTOR.  |    |   |
| 8  | NOT USED.  |    |   |
| 9  | NOT USED.  |    |   |
| 10 | NOT USED.  |    |   |
| 11 | NOT USED.  |    |   |
| 12 | EXTERIOR EMERGENCY REMOTE DUAL HEAD FIXTURE SHALL BE CENTERED ABOVE EXTERIOR DOOR AND FED FROM NEAREST INTERIOR EXIT SIGN EQUIPPED WITH HIGH OUTPUT BATTERY PACK. COORDINATE MOUNTING HEIGHT AND LOCATION(S) WITH ARCHITECTURAL ELEVATIONS.  |    |   |
| 13 | SINGLE CHANNEL OCCUPANCY SENSOR (DUAL TECHNOLOGY TYPE) WALL SWITCH FOR AUTO OFF SWITCHING, 20 AMP. SIDE WIRED WITH GROUNDING SCREW. (FLUSH MOUNTED) VERIFY COLOR WITH ARCHITECT BEFORE ORDERING. SENSOR SHALL HAVE A 30-MINUTE TIME DELAY TO "OFF". ACCEPTABLE MODEL IS SENSOR SWITCH MODEL W5X-PDT. |    |   |
| 14 | NL: INDICATED LUMINAIRE IS UN-SWITCHED AND SHALL FUNCTION AS A NIGHT LIGHT. LIGHT FIXTURE IS ENERGIZED 24/7. CONNECT TO THE UN-SWITCHED CIRCUIT CONDUCTOR. MODIFICATION TO FACTORY WIRING IS REQUIRED FOR THIS FIXTURE. (SEE SHEET NOTES).   |    |   |
| 15 | EM LIGHT FIXTURE IS SWITCHED DURING NORMAL OPERATION. UPON LOSS OF POWER, ONE LAMP OF THIS FIXTURE SHALL BE ENERGIZED VIA THE EMERGENCY FIXTURE, UNBOARDED EMERGENCY LIGHTING INVERTER. EXTEND UNSWITCHED, SAME CIRCUIT THROUGH LCP FOR THIS LIGHT ROW.  |    |   |
| 16 | NOT USED.  |    |   |

SHEET NOTES:

- |  |   |
|--|---|
| <p>1. ALL LED STRIP FIXTURES (EXCEPT EMMLN) ARE FACTORY CONNECTED TO THE SAME WIRING HARNESS CONDUCTOR COLOR AS DESIGNATED BY FIXTURE OEM INSTRUCTIONS AND SHALL BE CONNECTED TO SWITCHED PORTION OF LIGHTING CIRCUITS. LEDS, POWERING ALL LED, TUBE LAMPS WITH THE FIXTURE, (FIXTURE TYPES C, D, CC &amp; 8).</p> <p>2. EM LIGHTING FIXTURE IS SWITCHED DURING NORMAL OPERATION, UPON LOSS OF POWER, ONE LED TUBE LAMP OF THIS FIXTURE SHALL BE ENERGIZED VIA THE EMERGENCY FIXTURE, ONBOARD EMERGENCY LIGHTING INVERTER, (FIXTURE TYPES EM-C &amp; EM-4)</p> <p>3. ALL PERIMETER SALES FLOOR LIGHTS SHALL BE INSTALLED AT 2'-0" OFF ADJACENT WALL TO MIDDLE OF LIGHT FIXTURE. SEE DETAIL 5-E4.0.</p> <p>4. ALL LED STRIP FIXTURES ARE SHIPPED WITH 2 - CIRCUIT, COLOR CODED OEM WIRING HARNESS, (FIXTURE TYPES C, D, I, CC, EM-C &amp; EM-4)</p> <p>5. BACKROOM LIGHTING SHALL BE CLASSIFIED AS GROUP 'A' LIGHTING FOR THE LIGHTING CONTROL PANEL (L.C.P.)</p> <p>6. MOUNT ALL EXPOSED STRUCTURE LIGHTING AT 15'-0" A.F.F. MAX. SEE DETAILS 4-E4.0, 5-E4.0, AND 18-E4.0.</p> <p>7. MAINTAIN THE CIRCUITING AS SHOWN. CIRCUITS ARE REQUIRED AS SHOWN FOR THE LIGHTING CONTROL PANEL (L.C.P.)</p> <p>8. CEILING SPACERS ON SURFACE MOUNTED STRIP LIGHTS SHALL BE PLACED 2'-0" FROM END OF LIGHT FIXTURE AND 4'-0" ON CENTER ALONG ROW FROM THERE. EVERY FIXTURE SHALL HAVE 2 SPACERS. EACH CEILING SPACER SHALL HAVE CEILING WIRE WITHIN 6" OF SPACER. SEE DETAIL 16-E4.0.</p> <p>9. THE LIGHTING CONTROL PANEL (L.C.P.) IS PROVIDED WITHIN THE CPI SWITCHGEAR. ALL INTERIOR AND EXTERIOR LIGHTING AND DESIGNATED POWER CIRCUITS ARE TO BE CONTROLLED BY THE L.C.P.</p> <p>10. ALL BREAKERS ARE TO BE LABELED.</p> <p>11. SEE DRAWING 5.0 FOR ALL ELECTRICAL DEVICE TAGS, AND ELECTRICAL EQUIPMENT REQUIREMENTS.</p> <p>12. EXIT SIGNS SHOWN ARE CONSIDERED A MINIMUM. CONTRACTOR TO ADD EXIT SIGNS AS REQUIRED DUE TO FINAL FURNITURE LAYOUT, PER LOCAL AUTHORITIES.</p> <p>13. ALL LIGHTING CIRCUITS, OTHER THAN EMERGENCY/NIGHT LIGHT CIRCUITS, ARE TO BE ROUTED THROUGH CONTACTORS AND CONTROLLED BY L.C.P. ALL NECESSARY INFORMATION SHALL BE PROVIDED BY HOBBY LOBBY. CONTACTORS ARE NOT SHOWN ON DRAWINGS.</p> <p>14. ALL WIRING SHALL BE SINGLE CONDUCTOR, COPPER AND SHALL BE ROUTED IN</p> | <p>15. MC CABLE AND OTHER CABLE TYPES ARE NOT TO BE USED; EXCEPT THAT MC CABLE MAY BE USED AS LIGHT FIXTURE WHIPS ABOVE CEILINGS AND NO MORE THAN SIX (6) FEET IN LENGTH.</p> <p>HOBBY LOBBY SHALL FURNISH ADDITIONAL EMERGENCY LIGHTING FIXTURES, BEYOND THOSE SHOWN, IF DETERMINED NECESSARY TO SATISFY LIGHTING LEVELS PER THE AUTHORITY HAVING JURISDICTION. E.C. SHALL BE RESPONSIBLE FOR INSTALLATION. A BLACKOUT TEST OF EMERGENCY AND EXIT LIGHTS WILL BE REQUIRED BEFORE OCCUPANCY. THE L.C.P. SHALL HAVE A REPRESENTATIVE ON SITE AT THE TIME OF OCCUPANCY INSPECTION TO TURN ANY NEEDED DISCONNECTS OFF/ON.</p> <p>17. ELECTRICAL CONTRACTOR SHALL COORDINATE NEW LIGHTING FIXTURE LOCATIONS WITH ALL EXISTING AND NEW SPRINKLER LOCATIONS.</p> <p>18. 'N' - NIGHT LIGHT. NIGHT LIGHTS DO NOT RUN THROUGH LIGHTING CONTROL PANEL (L.C.P.). NIGHT LIGHTS ARE CONNECTED TO AN UN-SWITCHED CONDUCTOR OF LIGHT FIXTURE, FACTORY INSTALLED WIRING HARNESS.</p> <p>19. LED STRIP FIXTURES INTENDED FOR NIGHT LIGHT (N'L) OPERATION (ONLY) REQUIRE A FIELD WIRING MODIFICATION TO THE WIRING HARNESS AND ASSOCIATED TERMINATIONS. THE LED DRIVER OF DESIGNATED NIGHT LIGHTS (N'L) MUST BE DISCONNECTED FROM THE SWITCHED CONDUCTOR AND CONNECTED TO THE UN-SWITCHED WIRING HARNESS CONDUCTOR TO ENSURE UN-SWITCHED, 24/7 OPERATION (FIXTURE TYPES 'C' AND 'T').</p> <p>20. THE OWNER HAS BEEN NOTIFIED THAT THIS PROJECT REQUIRES A LIGHTING COMMISSIONING PLAN, PER C408.2.1, 2015 IBC, DEVELOPED BY REGISTERED DESIGN PROFESSIONAL OR APPROVED AGENT AND PROVIDED TO DEVELOPMENT SERVICES WITH CONSTRUCTION DOCUMENTATION.</p> <p>21. INTERIOR LIGHTING MANUAL OVER-RIDE PUSH BUTTON SWITCHES LOCATED IN THE RECEIVING AREA FOR CIRCUITS LISTED BELOW. THERE ARE A TOTAL OF 5 OVER-RIDE SWITCHES (PUSH BUTTONS) AS DEFINED BELOW:</p> |
|  | <p>SWITCH 1 (GROUP A):<br/>H3 CIRCUIT #S - 1,2,3,4,7,9,11,13,15,17,19,21,31,33, &amp; 35</p> <p>SWITCH 2 (GROUP B):<br/>H3 CIRCUIT #S - 8,10,12,14,16,18,20</p> <p>SWITCH 3 (GROUP C):<br/>H3 CIRCUIT #S - 34</p> <p>SWITCH 4 (GROUP D):<br/>H3 CIRCUIT #S - 40</p> <p>SWITCH 5 (GROUP E):<br/>SPARE</p>  |
|  | <p>22. ELECTRICAL CONTRACTOR SHALL PROVIDE ALL ROUGH-IN BOXES AND CONDUITS REQUIRED TO CONNECT LIGHTING CONDUITS FURNISHED BY OTHERS. ADDITIONALLY E.C. SHALL PROVIDE ALL LOW VOLTAGE WIRING AND CONNECTIONS TO LIGHTING CONTROL EQUIPMENT AS REQUIRED BY THE LIGHTING CONTROL EQUIPMENT SUPPLIER.</p>  |



**PAGE**  
**INTERWORKS, P.A.**  
**ENGINEERS & CONSULTANTS**  
923 MAIN STREET, NORTH WILKESBORO, NC 28659

REVIEW SET  
NOT FOR  
CONSTRUCTION

**STIPULATION FOR REUSE**  
THIS DRAWING WAS PREPARED FOR USE ON A SPECIFIC SITE CONTEMPORANEOUSLY WITH ITS ISSUE DATE AND IT IS NOT SUITABLE FOR USE ON A DIFFERENT PROJECT SITE OR AT A LATER TIME. USE OF THIS DRAWING FOR REFERENCE OR EXAMPLE ON ANOTHER PROJECT REQUIRES THE SERVICES OF PROPERLY LICENSED ARCHITECTS AND ENGINEERS. REPRODUCTION OF THIS DRAWING FOR REUSE ON ANOTHER PROJECT IS NOT AUTHORIZED AND IS CONTRARY TO THE LAW.

[illegible]

2200 NJ 66  
NEPTUNE CITY, NJ 07753

PROJ MGR :  
DRAWN BY : DBD  
CHECKED BY : CARP  
ISSUE DATE : 02/07/23  
FILE NAME : NCNJ-E2.0B

## LIGHTING FLOOR PLAN

## E2.0B