



## 129 INSKIP AVENUE, OCEAN GROVE, NEW JERSEY

---

HISTORIC PRESERVATION COMMISSION  
CERTIFICATE OF APPROPRIATENESS APPLICATION PACKAGE

## TABLE OF CONTENTS

---

- PROJECT NARRATIVE
- HISTORICAL INFORMATION
- EXISTING CONDITIONS
- PROPOSED ELEVATIONS
- MATERIAL LIST
- SPECIFICATIONS

# 129 INSKIP AVENUE, OCEAN GROVE, NEW JERSEY

---

129 Inskip Avenue is located in Ocean Grove within the HD-R-1 zoning district. The existing property is a vacant, corner lot, with an adjacent property to the right. The owner of the property is seeking a Certificate of Appropriateness (C of A) in order to build a new private residence. The owner's proposed new construction has been designed with consideration to the Ocean Grove Historic District Architectural Design Guidelines for Residential Structures.

The proposed house is 2,464 square feet with an attached bike storage room and a covered, outdoor shower in the backyard. The total depth of the proposed house is 44' - 9", including the storage room, and the total width is 24' - 0". The east (right) side of the house is setback 3' - 0" from the property line, and the west (left) side of the house, adjacent to the street, is setback 3' - 0" from the property line. The roof eaves and gutters cantilever 1' - 0" from the exterior wall, remaining 2' - 0" from all property lines. The front of the house consists of a large front porch, with the front steps setback 4' - 0" from the property line. The front porch on all levels is 8' - 0" deep, setting the house back 12' - 0" from the property line. The bike storage room is setback 3' - 3" from the rear property line, with an adjacent covered outdoor shower. The main exterior wall of the back of the house is setback 9' - 7 1/2" from the rear property line. The overall height of the house is 31' - 9".

The exterior aesthetics of the proposed house are designed to compliment the District's existing architecture. The proposed design is a Victorian Eclectic Style, a commonly found architectural hybrid in Ocean Grove, combining elements from Italianate, Eastlake, Gothic and Queen Anne designs. The exterior design relies on prominent end facing gables, ample open air multistory porches, and symmetrically balanced and positioned doors and windows. The proposed house siding JamesHardie smooth 5" lap siding painted HPC approved color Buxton Blue. The exposed foundation will be finished with stucco and painted Benjamin Moore Ultra White, a classic bright white. All proposed trim, fascia, and cornerboards will be AZEK, painted either Ultra White with accents of HPC approved color Naval (see section Material List). The onlays within the window and door trim will be painted HPC approved color Whipple Blue.

The front door will be a custom double, half round, solid wood door with inset glass panels. The proposed front door hardware is Lexington Estate Entry Set (6560) by Baldwin in Oil Rubbed Bronze finish, to compliment the exterior lights. All other exterior doors will be solid wood doors with glass panels. All exterior doors will have a natural wood finish. There are two exterior lights on both sides of the doors on all of the front porches, and one exterior light on one side of the rear door. The proposed exterior lights are Conway 17 1/2"H Oil-Rubbed Bronze Scroll Outdoor Wall Light.

The proposed front porch will include an authentic pine wood sawn baluster railing. The proposed railing will consist of Vintage Woodworks' Heart & Fleur panel design with a cypress wood handrail painted HPC approved color Naval. The Heart & Fleur design will be accented with a custom porch solid wood fretwork bracket with a floral design. The floral and swirl design will be carried throughout the exterior of the proposed house, such as in the gable decor and window trim onlays (see Specifications section). The proposed front porch structural columns will be wrapped with Versatex VERSAWRAP Column Wraps in factory finish "white."

The proposed windows will be Andersen 400 series. The windows will consist of 2 different styles, double hung and speciality half round shapes with a two over two grille pattern. The proposed windows are factory finished white. The windows will be finished with AZEK horizontal and vertical trim painted Ultra White with accents of HPC approved color Naval. The front windows along the first and second floor porches will have louvered shutters painted HPC approved color Naval.

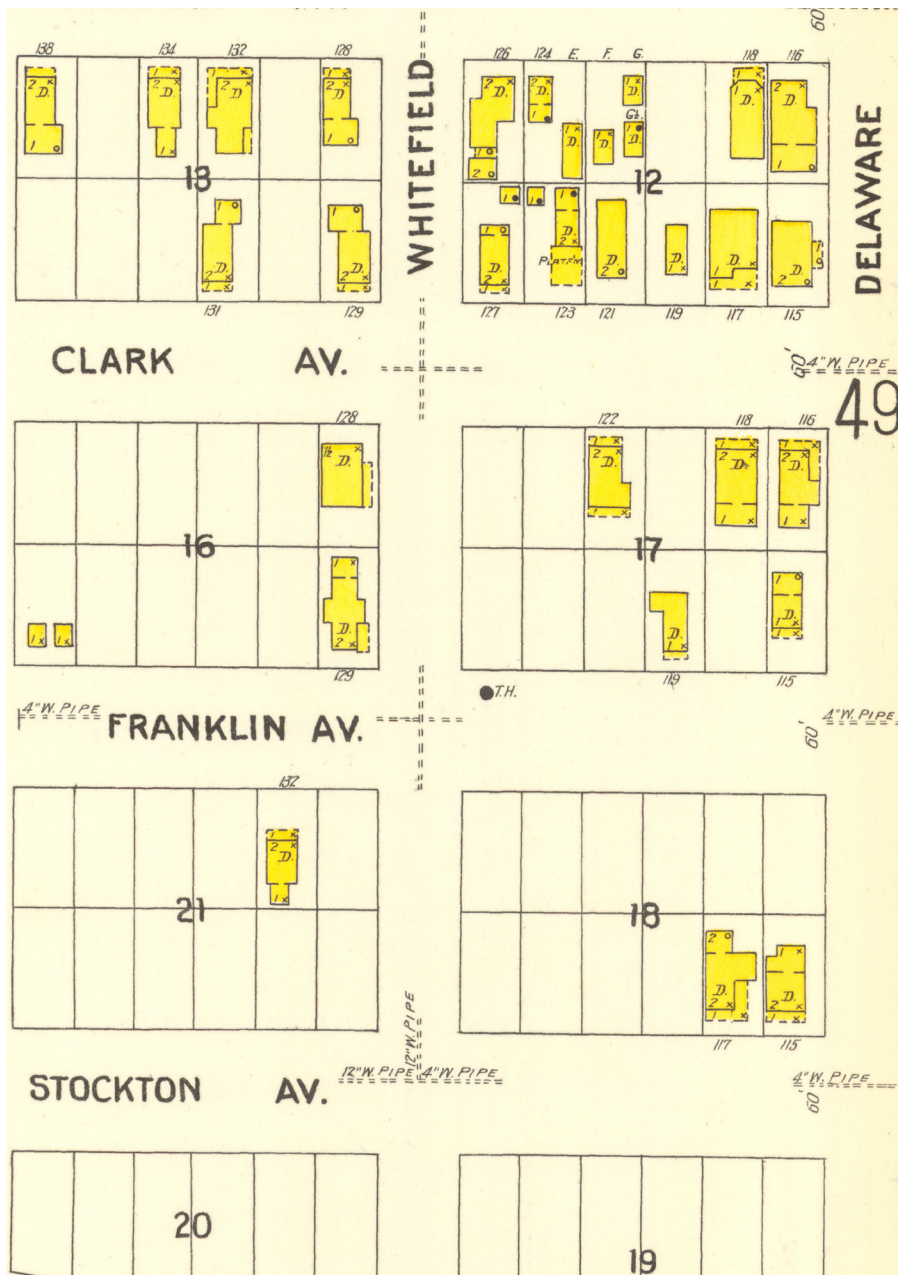
With the direction of the HPC Design Guidelines, the owner hopes the proposed design will compliment and preserve Ocean Grove's architectural integrity, craftsmanship, and heritage.

# HISTORICAL INFORMATION

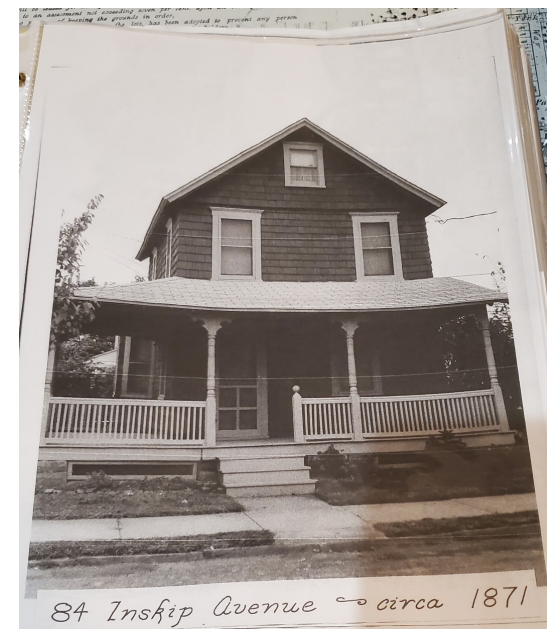
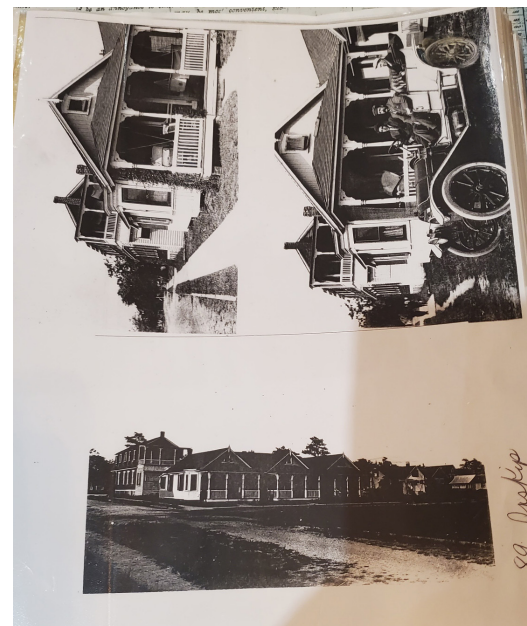
---

129 INSKIP AVENUE





SANBORN MAP



# EXISTING CONDITIONS

---

129 INSKIP AVENUE

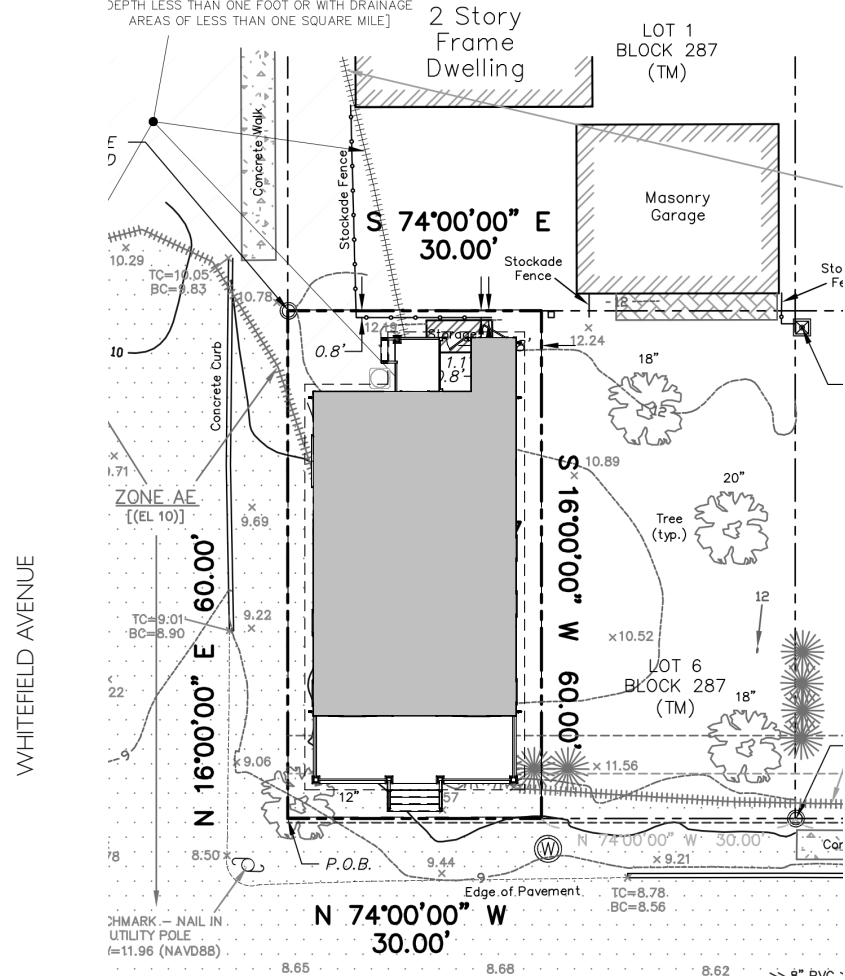
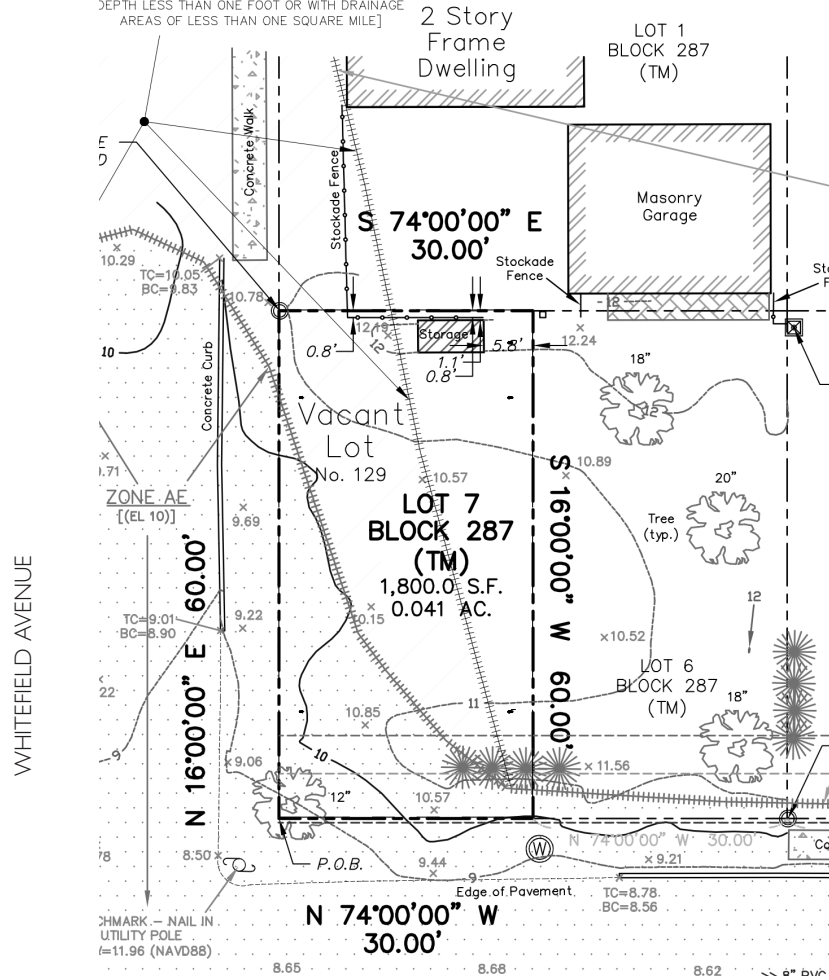


STOCKTON AVENUE

STOCKTON AVENUE

FLOOD\_ZONE X  
[0.2% ANNUAL CHANCE FLOOD HAZARD, AREAS  
OF 1% ANNUAL CHANCE FLOOD WITH AVERAGE  
DEPTH LESS THAN ONE FOOT OR WITH DRAINAGE  
AREAS OF LESS THAN ONE SQUARE MILE]

FLOOD\_ZONE X  
[0.2% ANNUAL CHANCE FLOOD HAZARD, AREAS  
OF 1% ANNUAL CHANCE FLOOD WITH AVERAGE  
DEPTH LESS THAN ONE FOOT OR WITH DRAINAGE  
AREAS OF LESS THAN ONE SQUARE MILE]



EXISTING SITE PLAN

PROPOSED SITE PLAN





SW CORNER OF SITE



SOUTH VIEW OF SITE



SE CORNER OF SITE



HOUSE ACROSS THE STREET ON WHITEFIELD AVENUE





HOUSE ACROSS THE STREET ON INSKIP AVENUE



HOUSE DIRECTLY BEHIND THE SITE ON STOCKTON AVENUE

# PROPOSED ELEVATIONS

---

129 INSKIP AVENUE



SOUTH (FRONT) ELEVATION



WEST (LEFT) ELEVATION



NORTH (REAR) ELEVATION



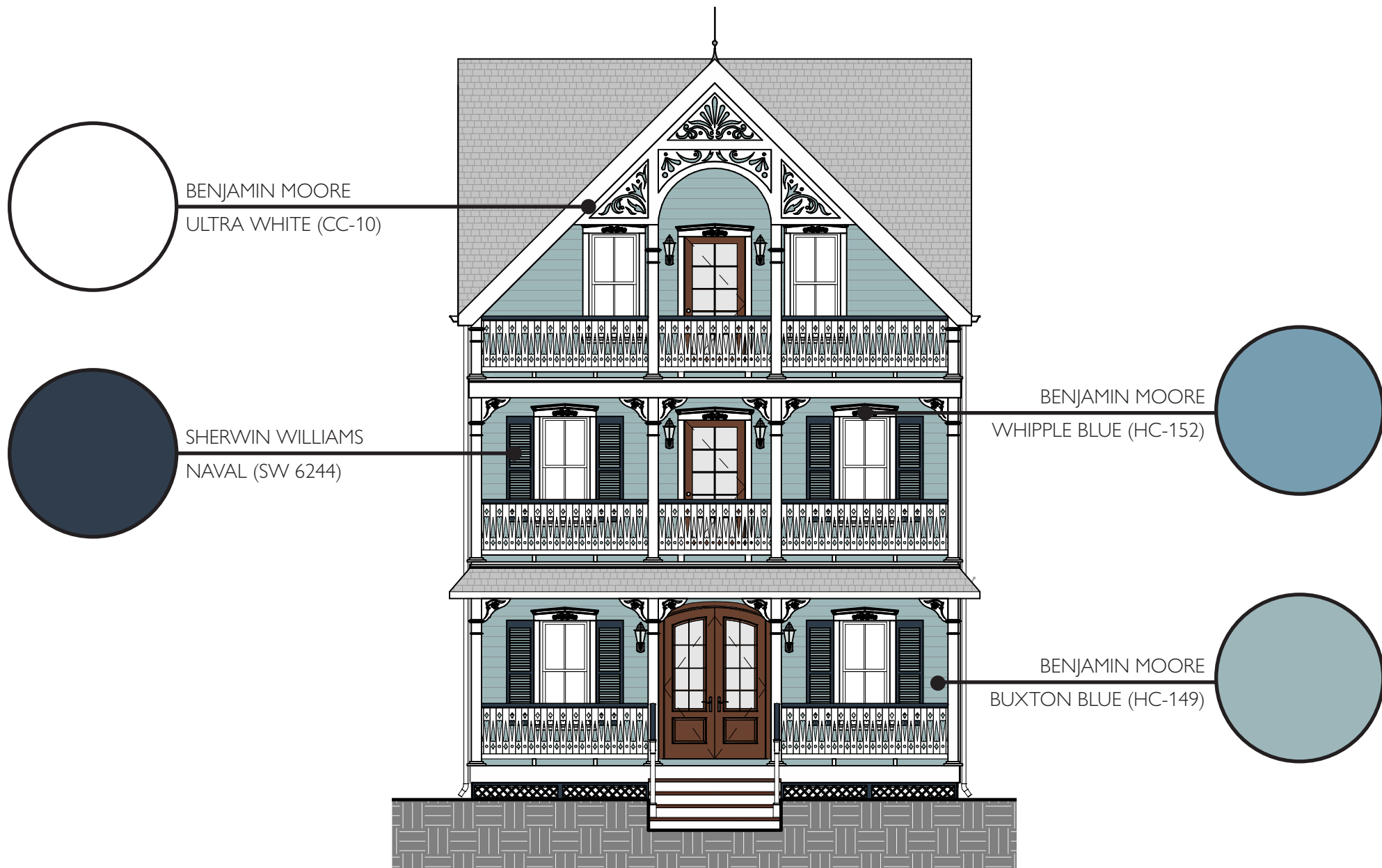
EAST (RIGHT) ELEVATION

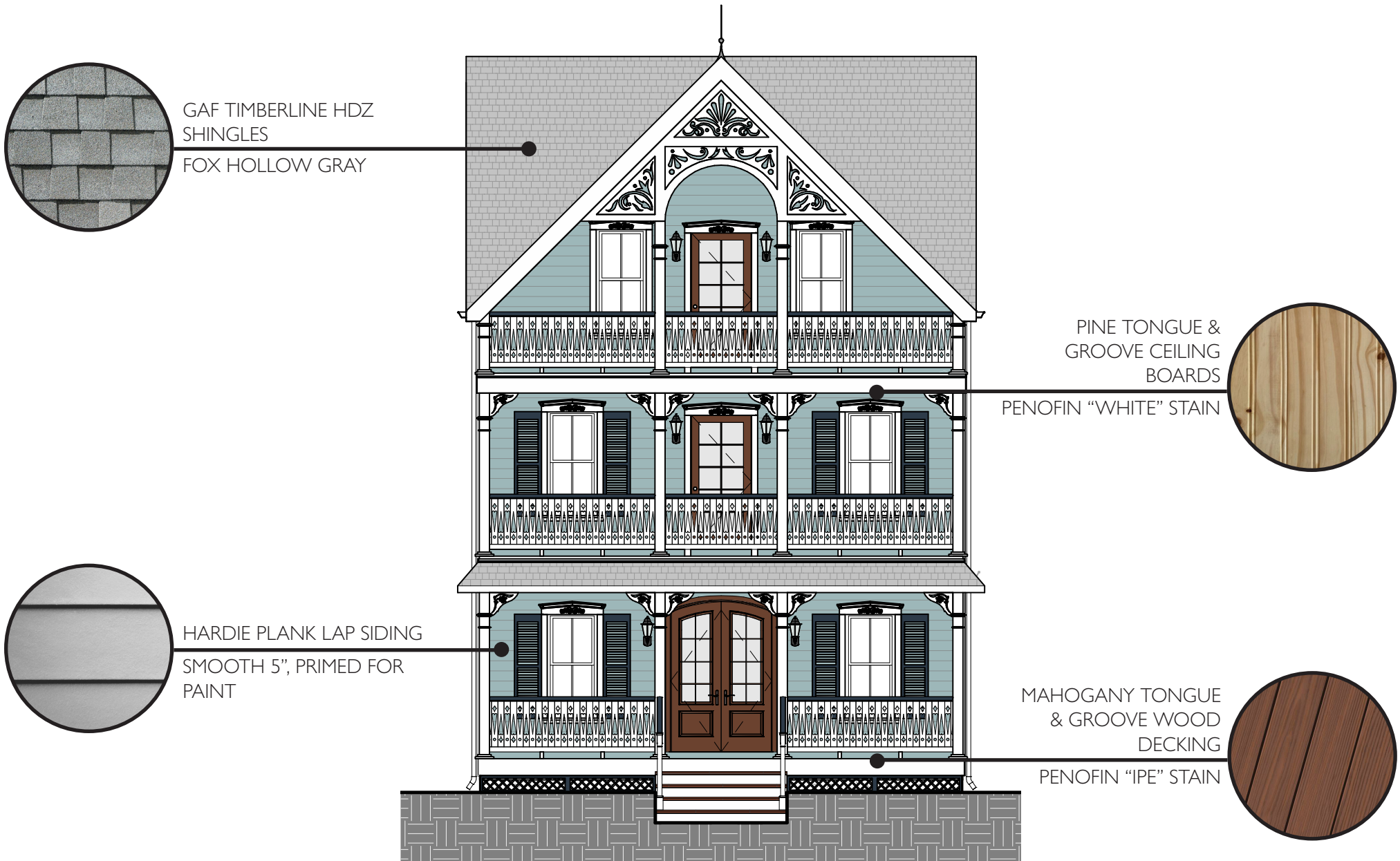


# MATERIAL LIST

---

129 INSKIP AVENUE





## WINDOWS

Andersen 400 Series Tilt Wash Double Hung Windows and Andersen 400 Series Speciality Windows. Windows to be two over two solid core wood units with low-e insulated clear glass. Interior sash and frame to be factory finished white. Exterior color proposed is Andersen factory finished white. All hardware and latches to be factory finished white.

## EXTERIOR DOORS

Simpson Concept Custom Front Door. Door to be solid wood double door with half round top and inset windows. Glazing to be double pane glass. Door to be natural wood finish. Door hardware to be Lexington Estate Entry Set (6560) finished Oil Rubbed Bronze.

Simpson Single French Door. Door to be solid wood with inset windows. Glazing to be double pane glass. Door to be natural wood finish.

## LAP SIDING

JamesHardie HardiePlank smooth fiber cement 5" exposure lap siding primed for paint and painted Buxton Blue (HC-149).

## EXPOSED FOUNDATION

Stucco on concrete block painted Ultra White (CC-10).

## WINDOW & DOOR TRIM

All AZEK trim to be primed for paint and painted Ultra White (CC-10). AZEK 3 1/2" J Casing to be used for windows and doors (jamb trim). Window and door crown to use AZEK Crosshead Pediment at an angle, top of crown to be painted Naval (SW 6244). Window sill to use AZEK Historic Sill.

## CORNERBOARD TRIM, SIDING TRIM, FASCIA, AND SOFFIT

AZEK cornerboard dimension 3 1/2" painted Ultra White (CC-10). Siding trim to be AZEK 5/4" painted Ultra White (CC-10). AZEK Quarter Round and AZEK Scotia to be applied to AZEK 5/4" siding trim along front porch, painted Naval (SW 6244). All roof fascia and barge board to be AZEK 5/4" trim, painted Ultra White (CC-10).

[Refer to elevations for design]

## ONLAYS/APPLIQUES

GDL Style Gable Pediment Decoration (GD-L#) to be applied to gables, painted Ultra White (CC-10). Swaying Scrolls (ONL07X03X01SWAL, or similar) to be applied to window header trim, painted Whipple Blue (HC-152).

## PORCH

Versatex VERSAWRAP Column Wrap in factory finish "white." Vintage Woodworks Heart & Fleur Sawn Baluster Railing made of pine wood in factory finish "white." Cypress wood handrail painted HPC approved color Naval (SW 6244). Natural mahogany tongue and groove wood decking stained with Penofin in "IPE" stain. Natural pine tongue and groove ceiling boards stained with Penofin Acrylic in "white" stain.

## LATTICE

Orthogonal cedar wood lattice painted Ultra White (CC-10) with AZEK frame painted Naval (SW 6244). Custom cedar latticework applied above attic porch, painted Ultra White (CC-10).

## ROOF

GAF Timberline HDZ in "Fox Hollow Gray." Amerimax 5" half round aluminum gutters and leaders finished in factory finish "white." AZEK vented and non-vented soffits, painted Ultra White (CC-10) where applicable.

## EXTERIOR LIGHTING

Conway 17 1/2" H Oil-Rubbed Bronze Scroll Outdoor Wall Light.



621 Lake Avenue #3A  
Asbury Park, New Jersey 07712  
t: 732.800.1958  
www.mode-arch.com

## LIST OF MATERIALS

129 INSKIP AVENUE  
OCEAN GROVE, NEW JERSEY 07756

# SPECIFICATIONS

---

129 INSKIP AVENUE



#### HARDIE® PLANK LAP SIDING

### SMOOTH

You can't go wrong with this sleek, modern siding. Find the perfect color in our Statement Collection products or Dream Collection products. Or get it primed for paint.



## PRIMED FOR PAINT

James Hardie's primed for paint collection gives you the power to choose paint for your home's exterior. It's primed. It's ready for field painting. It's a durable, high-performance canvas.



#### AVAILABLE SIZES

<b>THICKNESS:</b>	0.312"	
<b>LENGTH:</b>	144" boards	
<b>WIDTHS:</b>	6.25"	8.25"
<b>EXPOSURES:</b>	5"	7"
	12"	5.25"
	10.75"	4"
	7.25"	9.25"
	6"	8"

[Warranty Information >](#)

[Request a Quote >](#)

[Request a Sample >](#)



BENJAMIN MOORE  
BUXTON BLUE (HC-149)

## TILT-WASH DOUBLE-HUNG FULL-FRAME WINDOWS

Tables of Sizes .....	78-81
Specifications .....	79-83
Custom Sizes .....	84
Grille Patterns .....	85
Window Details .....	85-86
Joining Details .....	86
Narrowline® Conversion Kit .....	87
Combination Designs .....	181
Product Performance .....	197

**CUSTOM SIZING**  
in 1/8" (3) increments  
Dimensions in parentheses are in millimeters.

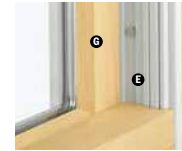


## TILT-WASH DOUBLE-HUNG FULL-FRAME WINDOWS

### FEATURES

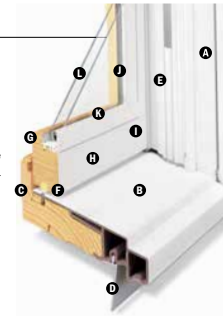
#### FRAME

- A** Exterior outer frame members are covered with a Perma-Shield® rigid vinyl cladding, minimizing maintenance and providing an attractive appearance.
- B** For exceptional long-lasting\* performance, sill members are constructed with a wood core and a Fibrex® material exterior. Sill ends are protected and sealed with weather-resistant covers.
- C** Natural wood stops are available in pine, and prefinished white, dark bronze and black.\*\*
- D** A factory-applied rigid vinyl anchoring flange on the head, sill and sides of the outer frame helps secure the unit to the structure.
- E** An extruded rigid vinyl jamb liner and fin provide a protective seal against the outer frame members. Exclusive slide wash assists make it easy to tilt the sash into wash mode position.



Unique block-and-tackle balancers feature sized-to-the-unit, rust-resistant springs that require no adjustment. Glass-reinforced nylon balancer shoes provide smooth, reliable sash operation. Sash can be removed, without tools, for drywall pass-through. Jamb liners are available in white or gray, and must be specified when ordering. Contact your Andersen supplier for details.

- F** Weatherstrip throughout the unit provides a long-lasting, energy-efficient, weather-resistant seal. For the top and bottom rails, an encased foam material is used. The head jamb liner and sill have a rigid vinyl rib that the weatherstrip material compresses against. At the meeting rail, compressible vinyl bulb material is used. Side jamb liners use leaf-type weatherstrip with foam inserts.



#### SASH

- Wash assists make it easy to tilt the sash into wash mode.
- G** Wood sash members are treated with a water-repellent preservative for long-lasting\* protection and performance. Interior surfaces are unfinished pine. Low-maintenance prefinished white interiors are also available.
- H** A polyester-stabilized coat with a Flexacron® finish is electrostatically applied to penetrate all exterior surfaces for maximum protection and a lustrous finish.
- I** Sash joints simulate the look of traditional mortise-and-tenon construction inside and out.

#### GLASS

- J** In addition to stainless steel glass spacers, black or white glass spacers are now available to allow the spacer to blend in with the unit color.
- K** Silicone bed glazing provides superior weathertightness and durability.
- L** High-Performance options include:
  - Low-E4® glass
  - Low-E4 HeatLock® glass
  - Low-E4 SmartSun® glass
  - Low-E4 Sun glass

Tempered and other glass options are available. Contact your Andersen supplier.

A removable translucent film helps shield the glass from damage during delivery and construction, and simplifies finishing at the job site.

#### Patterned Glass

Patterned glass options are available. See page 12 for more details.

\*Visit [andersenwindows.com/warranty](http://andersenwindows.com/warranty) for details.

\*\*Products with dark bronze and black interiors have matching exteriors.

\*Flexacron® is a registered trademark of PPG Industries, Inc.

Dimensions in parentheses are in millimeters.

Printing limitations prevent exact replication of colors and finishes. See your Andersen supplier for actual color and finish samples.

Naturally occurring variations in grain, color and texture of wood make each window one of a kind. All wood interiors are unfinished unless a finish is specified. Distressed bronze and oil rubbed bronze are "living" finishes that will change with time and use.

### EXTERIOR & INTERIOR OPTIONS

#### EXTERIOR COLORS



#### INTERIOR OPTIONS



### HARDWARE



Black | Gold Dust | Stone | White  
Stone is standard with natural interior units. White comes with prefinished white interiors. Other finishes optional.

### OPTIONAL HARDWARE Sold Separately



Antique Brass | Bright Brass  
Brushed Chrome | Distressed Bronze  
Distressed Nickel | Oil Rubbed Bronze  
Polished Chrome | Satin Nickel

Optional Estate lock and keeper reduces the clear opening height by 7/16" (114). Check with local building code officials to determine compliance with egress requirements.

#### CONTEMPORARY



Antique Brass | Black | Bright Brass  
Brushed Chrome | Distressed Bronze  
Distressed Nickel | Gold Dust  
Oil Rubbed Bronze | Polished Chrome  
Satin Nickel | Stone | White

#### TRADITIONAL



Antique Brass | Black | Bright Brass | Brushed Chrome  
Distressed Bronze | Distressed Nickel | Gold Dust | Oil Rubbed Bronze  
Polished Chrome | Satin Nickel | Stone | White

Bold name denotes finish shown.

#### HARDWARE FINISHES





## SPECIALTY WINDOWS

Half Circle, Quarter Circle, Eyebrow, Elliptical, Circle, Oval, Extended Gothic, Octagon, Monumental Circle and Monumental Quarter Circle Windows

Tables of Sizes .....	120-123
Specifications .....	121-122
Grille Patterns .....	122
Window Details .....	124-125
Joining Details .....	126

### Custom Arch Windows

Arch, Springline™ & Springline Flanker Windows

Tables of Sizes .....	128-133
Specifications .....	129-131
Grille Patterns .....	132
Window Details .....	133

### Flexiframe® Windows

Shapes & Custom Sizing .....	134
Window Detail .....	135
Joining Details .....	135-136

Combination Designs .....	181
Product Performance .....	197

**CUSTOM SIZING**  
in 1/8" (3) increments

Dimensions in parentheses are in millimeters.



## SPECIALTY WINDOWS

### FEATURES

#### FRAME

**A** Wood frame members are treated with a water-repellent preservative for long-lasting protection and performance. Radii are made of laminated pine, offering improved strength and appearance.

**B** The lineal sections of the jamb and sill on eyebrow, extended gothic, octagon, monumental, Flexiframe®, custom arch and arch windows are covered with a low-maintenance, fiberglass-reinforced composite. The arched head members and Springline™ units are covered with stretch-formed aluminum.

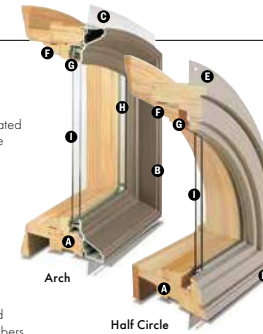
**C** The vinyl installation flange on eyebrow, extended gothic, octagon, monumental, Flexiframe, custom arch, arch and Springline units extends 1 1/4" (32) around the entire perimeter of the unit. It helps seal the unit to the structure.

**D** Circle, half circle, quarter circle, elliptical and oval windows are covered with a rigid vinyl cladding. Low-maintenance exterior cladding provides long-lasting beauty.

**E** Rigid vinyl cladding on circle, half circle, quarter circle, elliptical and oval window frames forms a full-perimeter installation flange for securing the unit to the structure. It also helps maintain an attractive appearance while minimizing maintenance.

**F** Inside trim stop is made of unfinished pine. Arched trim stops are made with quality, full-length laminated pine. Units are shipped with the trim stops tacked on, so removal is easy – expediting finishing and joining procedures.

**G** Unfinished interior wood glazing stops help secure the glass in place. Arched glazing stops are made with full-length laminated pine.



### EXTERIOR & INTERIOR OPTIONS

#### EXTERIOR COLORS



#### INTERIOR OPTIONS



#### GLASS

**I** In addition to stainless steel glass spacers, black or white glass spacers are now available to allow the spacer to blend in with the unit color.

**1** High-Performance options include:

- Low-E4® glass
- Low-E4 HeatLock® glass
- Low-E4 SmartSun™ glass
- Low-E4 SmartSun HeatLock glass
- Low-E4 Sun glass

Tempered and other glass options are available. Contact your Andersen supplier.

A removable translucent film helps shield the glass from damage during delivery and construction, and simplifies finishing at the job site.

#### Patterned Glass

Patterned glass options are available. See page 12 for more details.

**StormWATCH**  
PROTECTION

Specialty windows are available with Stormwatch® Protection. Visit [andersenwindows.com/coastal](http://andersenwindows.com/coastal) for more details.



Circle/Oval



Springline™



Flexiframe®

\*Visit [andersenwindows.com/warranty](http://andersenwindows.com/warranty) for details.  
\*\*Products with dark bronze and black interiors have matching exteriors.  
Dimensions in parentheses are in millimeters.

Printing limitations prevent exact replication of colors. See your Andersen supplier for actual color samples.  
Naturally occurring variations in grain, color and texture of wood make each window one of a kind. All wood interiors are unfinished unless a finish is specified.





## THE VALUE OF AZEK® PREMIUM TRIM

AZEK Trim provides long-term value through trusted durability and beautiful flexibility. Unlike wood, AZEK Trim doesn't need paint or stain for protection. Our trim comes in a beautiful semimatte white and has exceptional resistance to moisture, no matter the climate. Leave constant maintenance behind. Creatively curve and easily shape AZEK Trim through heat moulding. Get truly premium value backed by our industry-best [Lifetime Limited Warranty](#).

## AZEK TRIM FINISHES AND OPTIONS

AZEK offers a wide variety of trim board sizes and options to provide installers, builders and architects the perfect solution for any project or jobsite. All our trim options are made from rot-resistant engineered polymer and are backed by a lifetime limited warranty.

- **Moisture-resistant**

AZEK boards are 100% protected, inside and out, from both water exposure and absorption.

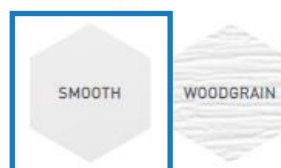
- **Unprecedented durability**

Flexible and durable cellular PVC prevents jobsite breakage and delivers long-lasting protection for homeowners.

- **Rot-resistant**

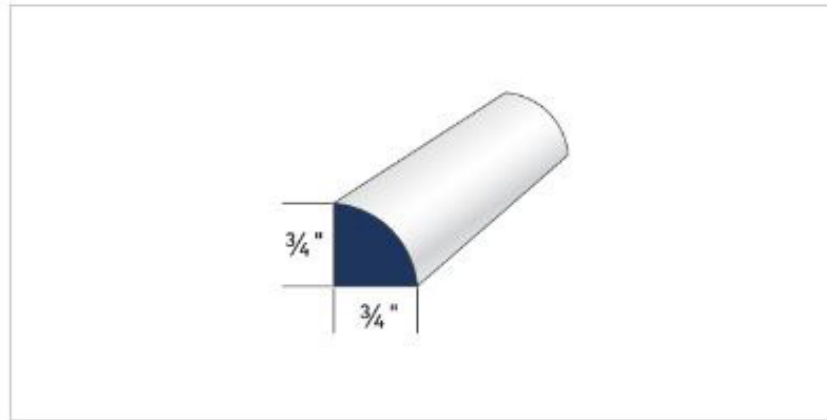
Say goodbye to splitting, splintering, and rotting caused by consistent exposure to the elements.

Finish Options



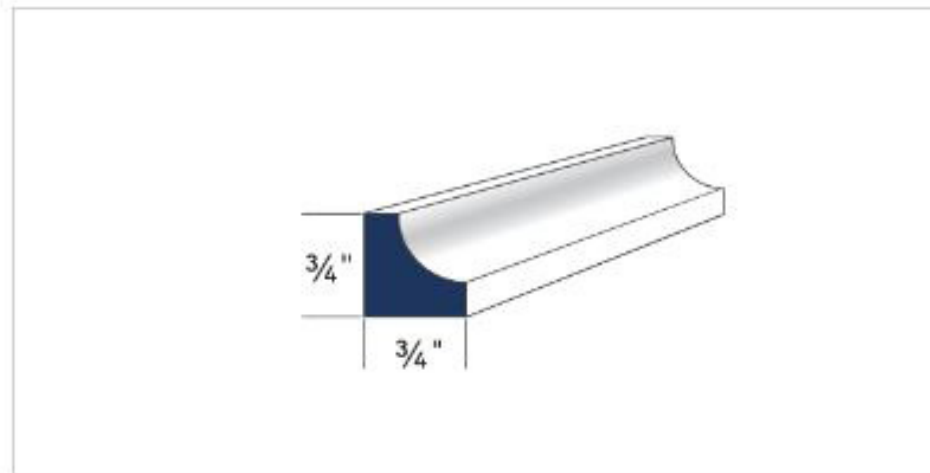
BENJAMIN MOORE  
ULTRA WHITE (CC-10)

5/4 X THICKNESS		
NOMINAL	ACTUAL	LENGTHS
5/4 x 4	1" x 3 1/2"	12', 18', and 20'
5/4 x 5	1" x 4 1/2"	12', 18', and 20'
5/4 x 6	1" x 5 1/2"	12', 18', and 20'
5/4 x 8	1" x 7 1/4"	12', 18', and 20'
5/4 x 10	1" x 9 1/4"	12', 18', and 20'
5/4 x 12	1" x 11 1/4"	12', 18', and 20'
5/4 x 16	1" x 15 1/4"	12', 18', and 20'



**Quarter Round AZM-105**

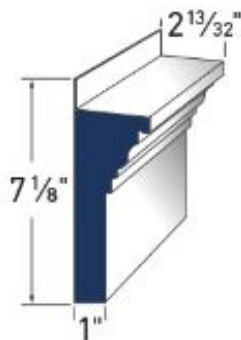
LENGTH: 16'



**Scotia AZM-93**

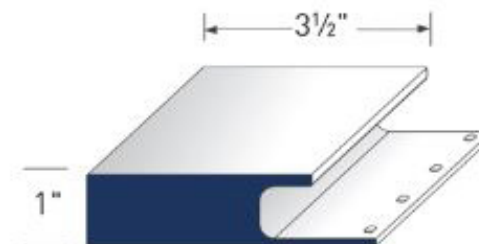


SHERWIN WILLIAMS  
NAVAL (SW 6244)



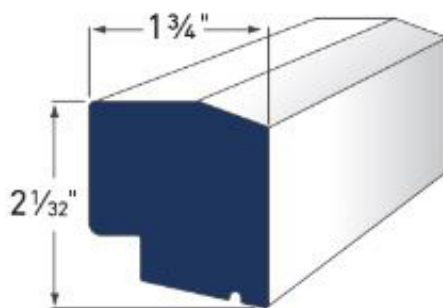
**Crosshead Pediment AZM-6216**

LENGTH: 18'



**3 1/2" J Casing<sup>NEW</sup> AZM-7968**

LENGTH: 16' & 18'



**Historic Sill AZM-6930**

LENGTH: 16'



BENJAMIN MOORE  
ULTRA WHITE (CC-10)

# VERSAWRAP™

COLUMN WRAPS | ■ CLASSIC ■ RAISED PANEL ■ TAPERED

At VERSATEX, we pride ourselves on coming up with innovative ways to make builders' lives easier while still elevating the aesthetics of your project. When the market demanded a way to make covering structural posts more efficient, we created a complete column wrap system: the VERSAWRAP. Now, instead of cutting and fitting together individual pieces of cellular PVC in the field, you can turn to our one-piece Classic and Raised Panel column wraps and our four-piece Tapered column wraps. All styles eliminate the struggle to match the seams, helping you to wrap smarter and Trim Smarter.

## ■ ONE-PIECE COLUMN WRAPS

### CLASSIC & RAISED PANEL

Nominal Sizes	Actual Inside Dimension
■ 4" X 4" X 8'6"	3 3/4" X 3 3/4" X 8'6"
■ 4" X 4" X 10'	3 3/4" X 3 3/4" X 10'
■ 6" X 6" X 8'6"	5 3/4" X 5 3/4" X 8'6"
■ 6" X 6" X 10'	5 3/4" X 5 3/4" X 10'
■ 8" X 8" X 8'6"	8 1/2" X 8 1/2" X 8'6"
■ 8" X 8" X 10'	8 1/2" X 8 1/2" X 10'
■ 12" X 12" X 12'	9 3/4" X 9 3/4" X 12'

- All sizes are available in the Classic style. Raised Panel wraps are available in sizes where icon is present.
- Special 10' Classic wraps available in "UNIT" quantities.
- Raised panels start 16 1/2" from bottom with railing gap from 30 3/4" to 38 1/2". Clearance above the top panel measures 8 3/4".
- 4", 6", and 8" wraps made from actual 1/2" thick VERSATEX; Add 1" to inside dimensions to calculate outside measurements. 12" wraps are an actual 3/4" thick.
- For best aesthetic results on Raised Panel wraps, painting is recommended to prevent dirt accumulation where panel is milled into product.

## ■ FOUR-PIECE COLUMN KITS

### TAPERED

Actual Sizes	5'	6'
■ 12" base / 8" cap	•	•
■ 16" base / 12" cap	•	•

- Each Tapered wrap includes squaring corners for fastening and optional skirt accessories.



*Skirt and Squaring Corners*  
Squaring corners and 3 1/2" decorative skirt pieces are included for the cap and base of each Tapered column to fasten and accessorize for a craftsman aesthetic.



# VERSAWRAP™ ACCESSORIES

## GO BEYOND THE SIMPLE COLUMN

Embellish your Classic or Raised Panel columns with Mouldings, Post Caps, or Accent Wraps. Accessory kits can be purchased to enhance your VERSAWRAP and give you the decorative look you desire.

## MOULDING KITS For 4", 6", and 8" Wraps ■

Bed Kit	Crown Kit	Base Cap Kit
Bed XL Kit	Crown XL Kit	

- All Moulding Kits are pre-cut to length, mitered, and sold in bags with Hoffman Dovetail Connectors for easy assembly and designed to fit snugly around outside dimension of specific size wraps (4", 6" or 8").
- XL Bed Moulding and XL Crown Moulding Kits are cut longer to fit around outside dimension of Accent Wraps.
- All Crown Moulding Kits are made with 4" Crown Mould profile (3 5/8" actual).
- VERSAWRAP Moulding Kits are not compatible with Tapered column wraps.

## ACCENT WRAPS

Nominal Sizes	Actual Inside Dimension
4" X 4" X 10"	4 3/4" X 4 3/4" X 10"
6" X 6" X 10"	6 3/4" X 6 3/4" X 10"
8" X 8" X 10"	9 1/2" X 9 1/2" X 10"
4" X 4" X 10"	4 3/4" X 4 3/4" X 10"

- Made from actual 1/2" thick VERSATEX; Add 1" to actual inside dimensions to calculate outside measurements.

## POST CAPS

### Actual Inside Dimension

4 3/4" X 4 3/4"
6 3/4" X 6 3/4"



## MOULDING KITS



CONNECTS WITH DOVETAILS

POST CAPS

**VERSATEX**  
TRIM BOARD

TRIM SMARTER.

AMERICAN OWNED AMERICAN MADE

A Product of VERSATEX Building Products, LLC • 400 Steel Street, Aliquippa, PA 15001 • 724.857.1111 • versatex.com

mode  
ARCHITECTS

621 Lake Avenue #3A  
Asbury Park, New Jersey 07712  
t: 732.800.1958  
www.mode-arch.com

## COLUMN WRAPS

129 INSKIP AVENUE  
OCEAN GROVE, NEW JERSEY 07756



## Sawn Balusters

# vww

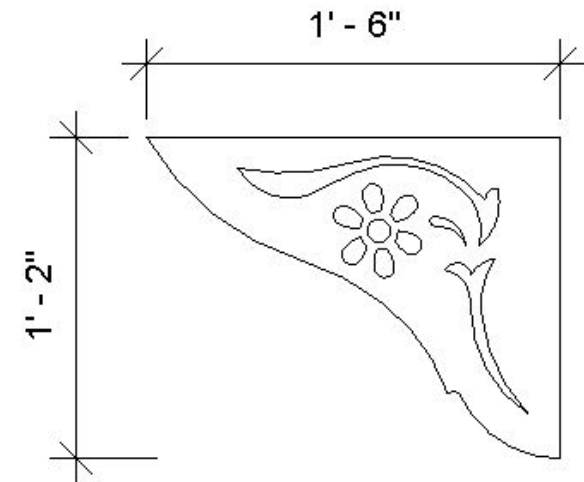


Common in the early part of the last century, Sawn Balusters are flat, not turned. Sawn Balusters authentically recreate the Gingerbread effect! Porches, balconies, landings, decks, and fences will look great when you add Vintage Woodworks Sawn Balusters.

We can add extra head and/or tail stock to increase the length of our Sawn Baluster. You will probably need this to install Sawn Balusters on stairs. Please inquire. For exterior projects it's very important to install your Balusters using [Sloped-top Bottom Rail](#). We can notch your Balusters to perfectly fit this Rail.

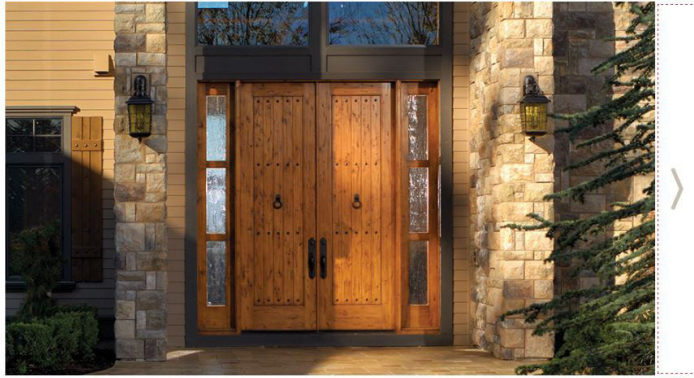


7" x 27"  
Heart & Fleur





**CONCEPT®** CUSTOM DOORS



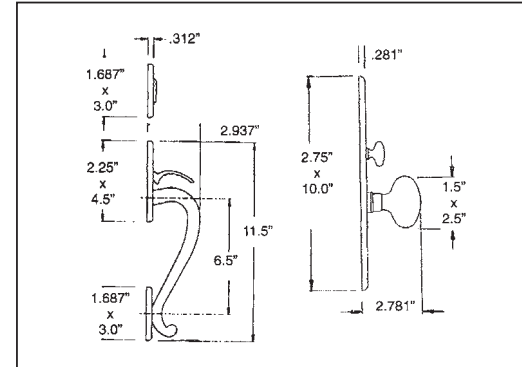
INSPIRATION/REFERENCE IMAGE

**6560 - LEXINGTON**  
ESTATE HANDLESET

SPECIFICATIONS



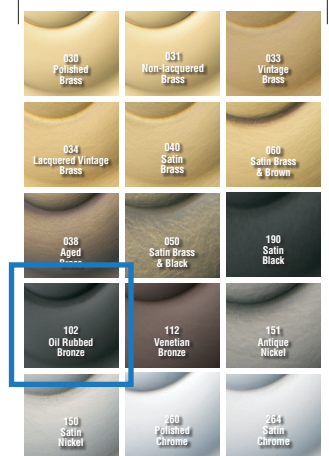
- > Certified by Underwriters Laboratories (UL) for use on fire doors up to three-hour rating
- > U L10C / UBC 7-2 (1997) Positive Pressure Rated, UL10B Pressure Rated
- > Material: Solid Forged Brass



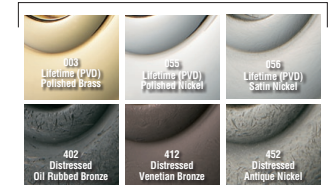
SHOWN WITH KNOB 5025



**TIER 1 FINISHES**



**TIER 2 FINISHES**



19701 Da Vinci · Lake Forest · California · 92610 · CUSTOMER SERVICE: 800.437.7448 · 8AM - 5PM EST · FAX: 800.255.9785

[www.baldwinhardware.com](http://www.baldwinhardware.com)

**LAMPS PLUS**

The Nation's Largest Lighting Retailer

[Home](#) / [Outdoor Lighting](#) / [Wall Light](#) / 16 - 20 in. high / [Bronze](#) / [Style # 71E71](#)

MOST POPULAR

## Conway 17 1/2"H Oil-Rubbed Bronze Scroll Outdoor Wall Light

5 Reviews

**\$199.99**

Comparable Value \$299.99

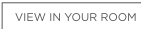
or 4 interest-free payments of **\$50.00** with [sezzle](#) ⓘ[Open Box Available](#)**FREE SHIPPING & FREE RETURNS\***

Ships Today if ordered in the next 7 Hr. 12 Min.

1

ADD TO CART

♡ SAVE



## Product Details

With elegant curved details and hammered glass, this bronze outdoor wall light is a showstopper for any outdoor decor.

**Additional Info:**

An oil-rubbed bronze finish adds traditional charm to this classic outdoor wall light. Amber hammered glass gently diffuses the bulb's light for romantic ambient illumination. The scroll accents and curving patterns surrounding the design add to the vintage aesthetic.

[Bulbs for Style #71E71](#)

- 17 1/2" high x 10" wide. Extends 12" from the wall. Glass is 9" high x 6 1/2" wide. Weighs 11.22 lbs.
- Backplate is 10" high x 4" wide x 3/4" deep. Mounting point to top of fixture is 9".
- Uses one maximum 60 watt standard-medium base bulb (not included).
- Conway traditional outdoor wall light from the John Timberland lighting brand.
- Oil rubbed bronze finish. Scroll accents. Amber hammered glass. Wet location outdoor rated for use in areas that get full exposure to rain and weather.

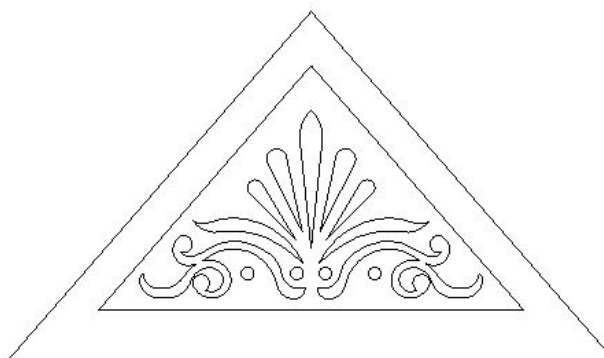
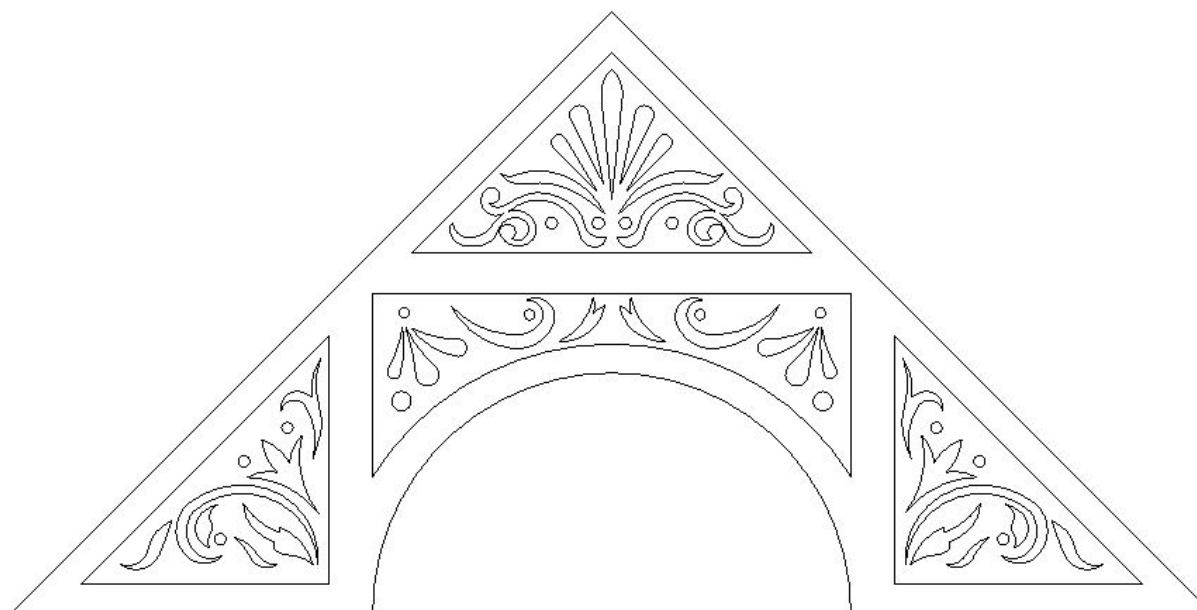
## SPECIFICATIONS

## PRODUCT ATTRIBUTES

## TECHNICAL SPECIFICATIONS

[https://www.lampsplus.com/products/conway-17-and-one-half-inch-h-oil-rubbed-bronze-scroll-outdoor-wall-light\\_\\_71e71.html](https://www.lampsplus.com/products/conway-17-and-one-half-inch-h-oil-rubbed-bronze-scroll-outdoor-wall-light__71e71.html)

1/3



BENJAMIN MOORE  
ULTRA WHITE (CC-10)





[Home](#) | [Decorative Millwork](#) | [Appliques & Onlays](#) | [Left & Right Onlays](#)

### 7 1/8"W X 3 1/8"H X 5/8"D (EACH SIDE) SMALL SWAYING SCROLLS (PAIR), ALDER

Item No.: ONL07X03X01SWAL

★★★★★ (12)

Size (Width x Height x Depth)  
7 1/8"W x 3 1/8"H x 5/8"D

Wood Species  
Alder



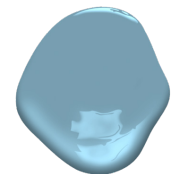
\$37.09 PAIR

1

ADD TO CART

FIND A DEALER

Estimated ship date: Thursday, Sep. 22nd - Monday, Sep. 26th



BENJAMIN MOORE  
WHIPPLE BLUE (HC-152)

America's #1-selling shingle  
just got better — *again.*



It seems like yesterday. In 2020, GAF introduced Timberline HDZ® Shingles with LayerLock™ Technology, which are eligible for the WindProven Limited Wind Warranty with no maximum wind speed limitation when installed with the required combination of GAF accessories.<sup>1</sup>

Now we're making our most popular shingle even better, with the addition of a 25-year StainGuard Plus™ Algae Protection Limited Warranty<sup>2</sup> against blue-green algae discoloration. Add GAF Hip and Ridge Cap Shingles and starter strips with the StainGuard Plus™ Algae Protection Limited Warranty<sup>2</sup> for protection from eave to ridge.

Offer your customers Timberline HDZ® — the shingle that just keeps getting better. Only from GAF.

Find out more at [gaf.com/StainGuardPlus](https://gaf.com/StainGuardPlus)



We protect what matters most™

A **stan**dard INDUSTRIES COMPANY

<sup>1</sup> 15-year WindProven™ limited wind warranty on Timberline HDZ Shingles requires the use of GAF starter strips, roof deck protection, ridge cap shingles, and leak barrier or attic ventilation. See GAF Roofing System Limited Warranty for complete coverage and restrictions. Visit [gaf.com/LWS](https://gaf.com/LWS) for qualifying GAF products. For installations not eligible for the WindProven limited wind warranty, see GAF Shingle & Accessory Limited Warranty for complete coverage and restrictions.

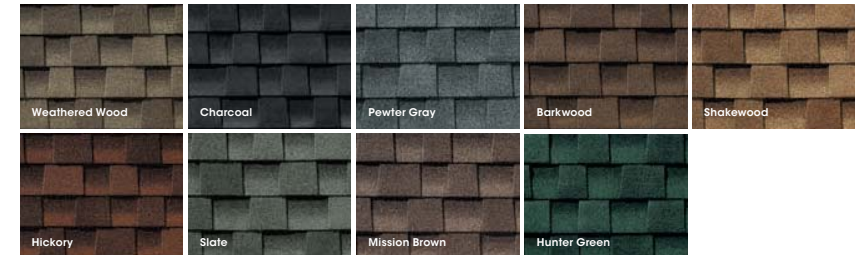
<sup>2</sup> 25-year StainGuard Plus™ Algae Protection Limited Warranty against blue-green algae discoloration is available only on products sold in packages bearing the StainGuard Plus™ logo. See GAF Shingle & Accessory Limited Warranty for complete coverage restrictions and qualifying products.

© 2021 GAF 12/21 • #027 • RES2145

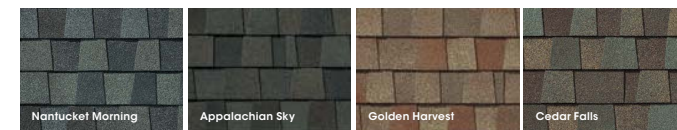
## Color Availability



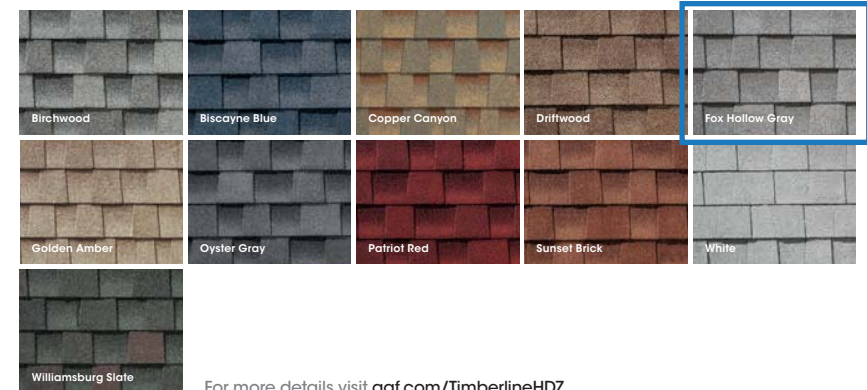
### Nationally Available Colors



### Harvest Blend Colors



### Regionally Available Colors (See next page for details.)



For more details visit [gaf.com/TimberlineHDZ](https://gaf.com/TimberlineHDZ)

Note: It is difficult to reproduce the color clarity and actual color blends of these products. Before selecting your color, please ask to see several full-size shingles.



621 Lake Avenue #3A  
Asbury Park, New Jersey 07712  
t: 732.800.1958  
[www.mode-arch.com](https://www.mode-arch.com)

## GAF ROOF SHINGLES

129 INSKIP AVENUE  
OCEAN GROVE, NEW JERSEY 07756



## A BEAUTIFUL, EASILY INSTALLED SYSTEM TO SAVE TIME AND MONEY

Made from moisture-resistant PVC to provide low-maintenance performance and designed to deliver enduring beauty, the Soffit System from AZEK Exteriors includes soffits (vented and non-vented), notched fascia and frieze boards. Each part easily fits together for simplified installation without specialized labor. All elements of the system are available in smooth Traditional finish.

### Vented and Non-Vented Soffit:

Made from durable, moisture-resistant, long-lasting PVC, AZEK® Exteriors Soffits are available in several sizes and complemented by grooved fascia and frieze boards. This system offers easy installation with pieces that fit together effortlessly, creating a clean, beautiful and uniform finish.

The Vented Soffit comes with an industry leading 10 square inches of net free air flow per square foot, allowing circulation through the home's roof system to prevent moisture damage. Screening the vents is optional; vents are slant cut to prevent nesting insect infiltration.

Non-vented soffit is also available in specific sizes to perfectly fit the system avoiding the need to precisely cut PVC sheet. The solid soffit sizes can be used on their own to provide a clean, uniform finish or the two versions can be used together interchangeably.



The Amerimax Home Products 80 Degree White Aluminum Half-Round Gutter is crafted from the highest quality materials. Although elegant in appearance, they are also functional. Fabricated in aluminum with a hi-gloss white finish, Amerimax's line of half round gutter products includes everything you need to protect your property from water run-off. Half-Round gutter systems give homes and businesses a more traditional, historical look. Use the half-round gutter to control runoff and help prevent foundation erosion.

- Aluminum construction for durability
- Baked-on white finish for low maintenance
- Half-round design will complement your home or business for a more traditional appearance
- Use in historical restoration projects for continuity of a by-gone era
- Single-bead half-round gutter style
- Fits 5 in. half-round gutter system
- Use to control roof run-off, protect walls and help prevent foundation erosion
- Convenient, do-it-yourself length