

08. Exterior Lighting

Uniform Construction Code requires lighting at each exterior door (i.e., latch-side, flanking, or overhead). We propose installing fixtures at the two doors leading onto the wraparound front porch and at the tower. In making these selections we tried to weight both the Code requirements for lighting at doors, the township’s glare ordinance, and aesthetic considerations.

The covered front porch is 8’ deep x 46’ in length (i.e., 368 square feet of porch space) and wraps 90 degrees around a tower with doors at each end of this span. It is a very large and very long porch area.

- 1.) Front Door / Front Stair: We propose installing a Bevolo, ceiling-mounted, six-sided, French Quarter style Gas Lantern, centered in crook of the pediment gable above the front doors.
- 2.) We propose installing four Bevolo, wall-mounted six-sided, French Quarter style Gas Lanterns of the same style, mounted at four convex edges between windows around the central tower beneath the covered wraparound porch.
- 3.) We propose installing a six-sided Bevolo, 2-bulb electric, flush-mounted ceiling fixture above the east door leading onto the porch. (Note: an electric fixture is proposed at this door because it is unclear whether there is sufficient clearance for a gas fixture at this location.)

A note about brightness and glare: We are mindful that historic homes should not be “over illuminated.” As well, we are aware of the Township’s “Glare” ordinance. These factors combined with aesthetics are the reason we are proposing gas lanterns.

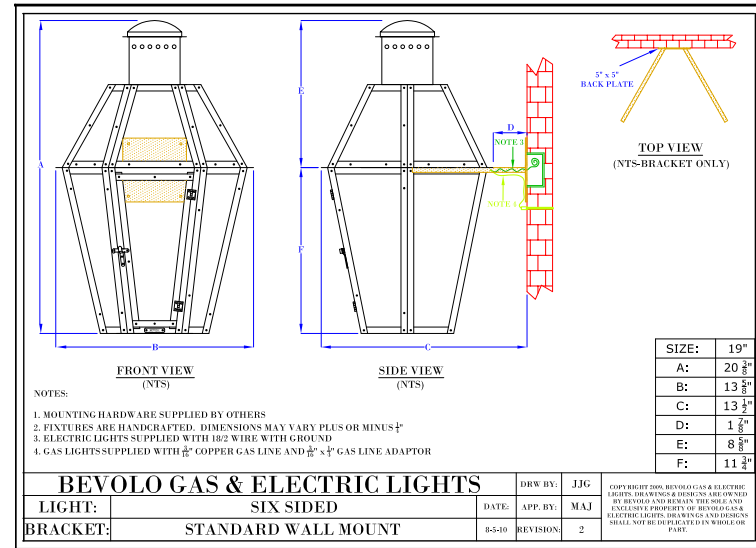
If we were to use conventional light fixtures, the property would be grossly over-lit. However, according to the manufacturer, each of the specified lanterns provides only 100 lumens of light; the equivalent of a 15-watt incandescent bulb often used in small appliances. All five gas lanterns together provide only 500 lumens of light. ***For comparison, a single 60-watt-equivalent lightbulb provides 800 lumens.*** Light from the lanterns provides warm, flickering, low-level illumination that is primarily ornamental.

Note: The Historic Preservation Commission has previously approved lanterns of similar size and number for the porches at both 112 Main Avenue (Oakhaven) and 34 Ocean Avenue (The Albatross), shown below.

BEVOLO
— established 1945 —
GAS & ELECTRIC LIGHTS



SIX-SIDED FRENCH QUARTER®

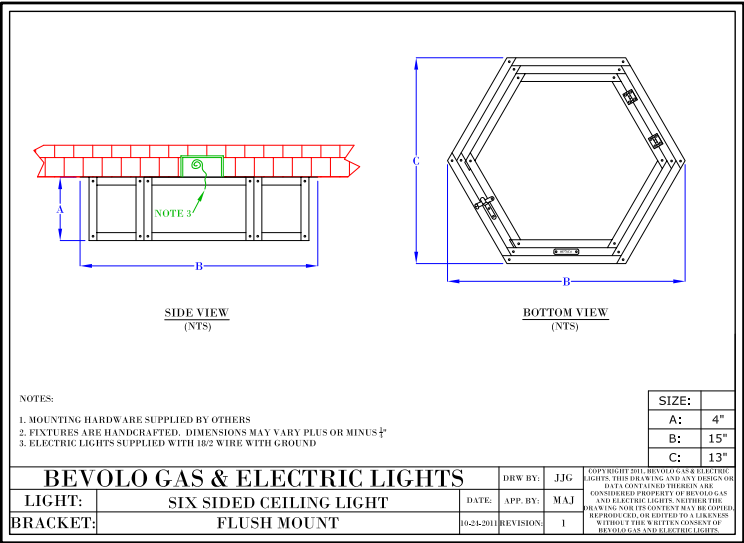


Specifications of Bevolo, handmade, copper, Six-Sided French Quarter gas lanterns, 19"; one to be ceiling mounted over the front door.

BEVOLO
—established 1945—
GAS & ELECTRIC LIGHTS



SIGNATURE SERIES
SIX-SIDED CEILING FLUSH



Specifications of Bevolo, handmade, copper, Six-Sided French Quarter electric flush-mount ceiling fixture (2 bulb) over east porch door.



A full-scale model of proposed fixture.



The Albatross with the same size Bevolo lanterns along the front porches.