



Catalog of Existing Windows and Exterior Doors  
and Proposed Modifications  
17 Webb Avenue, Ocean Grove

Notes:

This document was prepared by Andrea Fitzpatrick, AIA of Shore Point Architecture. To the best of her professional knowledge, the windows / exterior doors deemed historically significant are identified. If a historically significant window/door is proposed for removal as part of this application, the window / exterior door tag number is highlighted in yellow, below. A “condition report” for these windows / exterior doors, if required by the HPC, should be prepared and submitted by Others and is not included as part of this document.

Date	Revision / Submission
12/9/21	HPC Submission (Initial Release)

# SHORE POINT ARCHITECTURE, PA

## Catalog of Existing Windows and Exterior Doors – 17 Webb Avenue, Ocean Grove

Tag number	Type	Size	Material	Significant	Replacement Proposed	Modified Opening	Replacement Info
101	¾ clear glass in flush door slab	2'-8"x7'-0"	Clear glass / wood	N	Y	N	"Simpson" ½ clear glass, mahogany. Match exist size.

Existing Photo (Interior)



Existing Photo (Exterior)



Proposed Replacement  
"Simpson" model #114



# SHORE POINT ARCHITECTURE, PA

## Catalog of Existing Windows and Exterior Doors – 17 Webb Avenue, Ocean Grove

Tag number	Type	Size	Material	Significant	Replacement Proposed	Modified Opening	Replacement Info
102	double-hung 1:1	2'-4"x5'-2"	Clear glass / wood	Y	Y	N	Andersen 400s custom size (match exist), full frame, 2:2, DH*

\* If the window replacement is approved by the HPC, the interior window trim is to be removed so contractor can verify existing window frame sizes to ensure new windows (custom size, as required) match existing.

Photo (Interior)

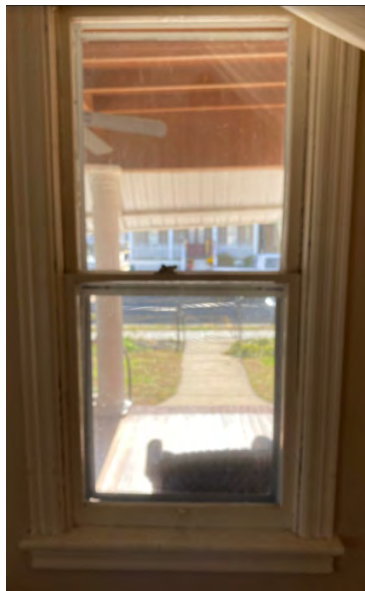
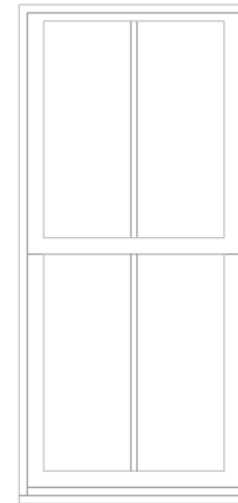


Photo (Exterior)



Proposed Replacement  
Andersen 400s DH 2:2 Custom



# SHORE POINT ARCHITECTURE, PA

## Catalog of Existing Windows and Exterior Doors – 17 Webb Avenue, Ocean Grove

Tag number	Type	Size	Material	Significant	Replacement Proposed	Modified Opening	Replacement Info
103	double-hung 1:1	1'-6"x5'-2"	Clear glass / wood	Y	Y	N	Andersen 400s custom size (match exist), full frame, 2:2, DH*

\* If the window replacement is approved by the HPC, the interior window trim is to be removed so contractor can verify existing window frame sizes to ensure new windows (custom size, as required) match existing.

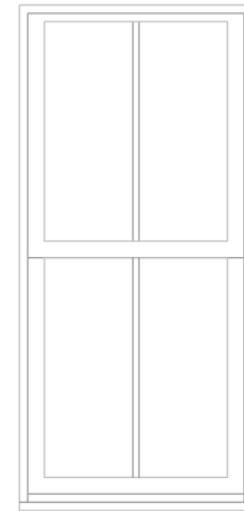
Photo (Interior)



Photo (Exterior)



Proposed Replacement  
Andersen 400s DH 2:2 Custom



# SHORE POINT ARCHITECTURE, PA

## Catalog of Existing Windows and Exterior Doors – 17 Webb Avenue, Ocean Grove

Tag number	Type	Size	Material	Significant	Replacement Proposed	Modified Opening	Replacement Info
104	picture	4'-0"x5'-2"	Clear glass / wood	Y	Y	N	Andersen 400s custom size (match exist), full frame, picture*

\* If the window replacement is approved by the HPC, the interior window trim is to be removed so contractor can verify existing window frame sizes to ensure new windows (custom size, as required) match existing.

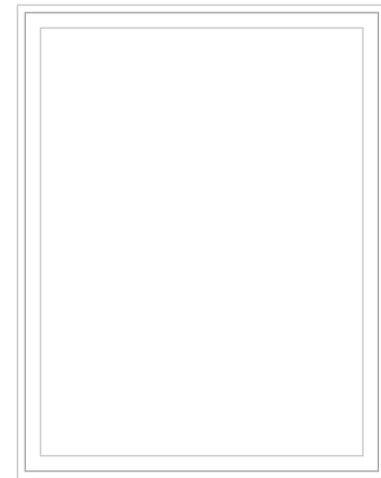
Photo (Interior)



Photo (Exterior)



Proposed Replacement  
Andersen 400s Custom Picture Window



# SHORE POINT ARCHITECTURE, PA

## Catalog of Existing Windows and Exterior Doors – 17 Webb Avenue, Ocean Grove

Tag number	Type	Size	Material	Significant	Replacement Proposed	Modified Opening	Replacement Info
105	double-hung 1:1	1'-6"x5'-2"	Clear glass / wood	Y	Y	N	Andersen 400s custom size (match exist), full frame, 2:2, DH*

\* If the window replacement is approved by the HPC, the interior window trim is to be removed so contractor can verify existing window frame sizes to ensure new windows (custom size, as required) match existing.

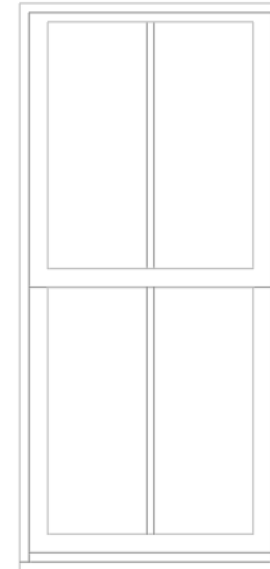
Photo (Interior)



Photo (Exterior)



Proposed Replacement  
Andersen 400s DH 2:2 Custom





# SHORE POINT ARCHITECTURE, PA

## Catalog of Existing Windows and Exterior Doors – 17 Webb Avenue, Ocean Grove

Tag number	Type	Size	Material	Significant	Replacement Proposed	Modified Opening	Replacement Info
106	¾ clear glass in flush door slab	3'-0"x7'-0"	Clear glass / wood	N	Y	N	"Simpson" ½ clear glass, mahogany. Match exist size.

Photo (Interior)



Photo (Exterior)



Proposed Replacement:  
"Simpson" model #114



# SHORE POINT ARCHITECTURE, PA

## Catalog of Existing Windows and Exterior Doors – 17 Webb Avenue, Ocean Grove

Tag number	Type	Size	Material	Significant	Replacement Proposed	Modified Opening	Additional info
107	Fixed with diamond lite pattern	3'-6"x2'-8"	Clear glass / wood	Y	N	N	Repair damaged components as required. Scrape, clean and repaint.

Photo (Interior)



Photo (Exterior)





# SHORE POINT ARCHITECTURE, PA

## Catalog of Existing Windows and Exterior Doors – 17 Webb Avenue, Ocean Grove

Tag number	Type	Size	Material	Significant	Replacement Proposed	Modified Opening	Replacement Info
108	(3) fixed w/ diamond lite pattern	(3) 1'-6"x2'-8"	Clear glass / wood	Y	N/A	N/A	Demolish (due to construction of proposed addition)

Photo (Interior)



Photo (Exterior)



# SHORE POINT ARCHITECTURE, PA

## Catalog of Existing Windows and Exterior Doors – 17 Webb Avenue, Ocean Grove

Tag number	Type	Size	Material	Significant	Replacement Proposed	Modified Opening	Replacement Info
109	double-hung 2:2	2'-4"x5'-2"	Clear glass / wood	Y	N/A	N/A	Demolish (due to construction of proposed addition)

Photo (Interior)



Photo (Exterior)



Photo (Detail)



# SHORE POINT ARCHITECTURE, PA

## Catalog of Existing Windows and Exterior Doors – 17 Webb Avenue, Ocean Grove

Tag number	Type	Size	Material	Significant	Replacement Proposed	Modified Opening	Replacement Info
110	Half Glass Door with 4 lite, 2-panel wood frame	2'-6"x6'-5"	Clear glass / wood	N	N/A	N/A	Demolish (due to construction of proposed addition)

Photo (Interior)



Photo (Exterior)



# SHORE POINT ARCHITECTURE, PA

## Catalog of Existing Windows and Exterior Doors – 17 Webb Avenue, Ocean Grove

Tag number	Type	Size	Material	Significant	Replacement Proposed	Modified Opening	Replacement Info
111	double-hung 2:2	2'-4"x3'-0"	Vinyl Replacement	N	N/A	N/A	Demolish (due to construction of proposed addition)

Photo (Interior)



Photo (Exterior)





# SHORE POINT ARCHITECTURE, PA

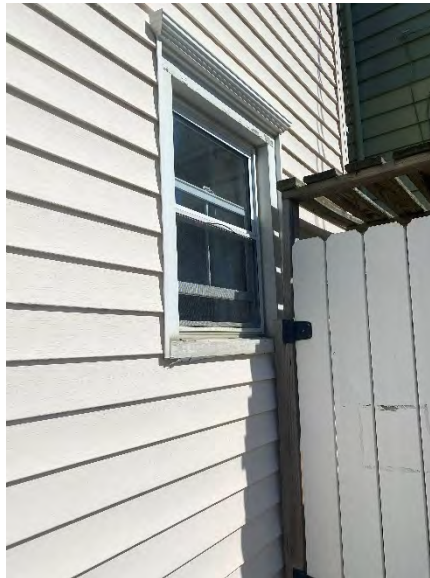
## Catalog of Existing Windows and Exterior Doors – 17 Webb Avenue, Ocean Grove

Tag number	Type	Size	Material	Significant	Replacement Proposed	Modified Opening	Replacement Info
112	double-hung 1:2	2'-4"x3'-0"	Vinyl Replacement	N	N/A	N/A	Demolish (due to construction of proposed addition)

Photo (Interior)



Photo (Exterior)



# SHORE POINT ARCHITECTURE, PA

## Catalog of Existing Windows and Exterior Doors – 17 Webb Avenue, Ocean Grove

Tag number	Type	Size	Material	Significant	Replacement Proposed	Modified Opening	Replacement Info
113	Glider	2'-10"x2'-4"	Vinyl	N	Y	Y	Andersen 400s TW2032 DH, 2:2

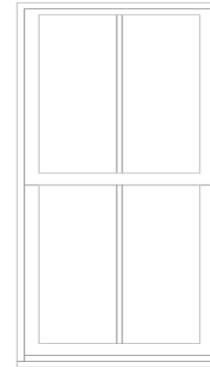
Photo (Interior)



Photo (Exterior)



Proposed Replacement:





# SHORE POINT ARCHITECTURE, PA

## Catalog of Existing Windows and Exterior Doors – 17 Webb Avenue, Ocean Grove

Tag number	Type	Size	Material	Significant	Replacement Proposed	Modified Opening	Replacement Info
114	double-hung 1:1	2'-4"x5'-2"	Clear glass / wood	Y	Y	Y (shorten only)	Andersen 400s custom size (match exist width), full frame, 2:2, DH*

\* If the window replacement is approved by the HPC, the interior window trim is to be removed so contractor can verify existing window frame sizes to ensure new windows (custom size, as required) match existing WIDTH (at Kitchen)

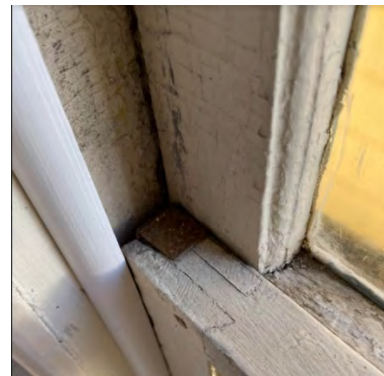
Photo (Interior)



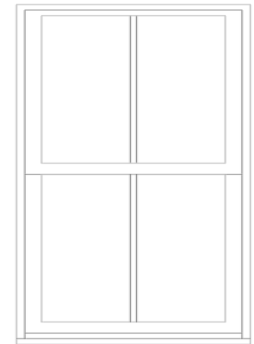
Photo (Exterior)



Photo (Detail)



Proposed Replacement:



# SHORE POINT ARCHITECTURE, PA

## Catalog of Existing Windows and Exterior Doors – 17 Webb Avenue, Ocean Grove

Tag number	Type	Size	Material	Significant	Replacement Proposed	Modified Opening	Replacement Info
115	double-hung 2:2	2'-4"x5'-2"	Clear glass / wood	Y	Y	Y (shorten only)	Andersen 400s custom size (match exist width), full frame, 2:2, DH*

\* If the window replacement is approved by the HPC, the interior window trim is to be removed so contractor can verify existing window frame sizes to ensure new windows (custom size, as required) match existing WIDTH (at Kitchen)

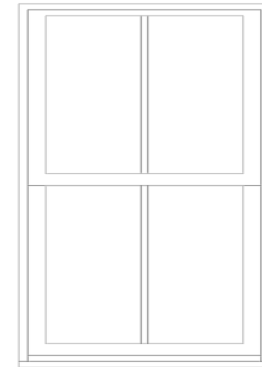
Photo (Interior)



Photo (Exterior)



Proposed Replacement:



# SHORE POINT ARCHITECTURE, PA

## Catalog of Existing Windows and Exterior Doors – 17 Webb Avenue, Ocean Grove

Tag number	Type	Size	Material	Significant	Replacement Proposed	Modified Opening	Replacement Info
116	double-hung 2:2	2'-4"x5'-2"	Clear glass / wood	Y	N/A	N/A	Remove and Infill Opening due construction of new stair

Photo (Interior)



Photo (Exterior)



# SHORE POINT ARCHITECTURE, PA

## Catalog of Existing Windows and Exterior Doors – 17 Webb Avenue, Ocean Grove

Tag number	Type	Size	Material	Significant	Replacement Proposed	Modified Opening	Replacement Info
117	double-hung 2:2	2'-4"x5'-2"	Clear glass / wood	Y	Y	N	Andersen 400s custom size (match exist), full frame, 2:2, DH*

\* If the window replacement is approved by the HPC, the interior window trim is to be removed so contractor can verify existing window frame sizes to ensure new windows (custom size, as required) match existing.

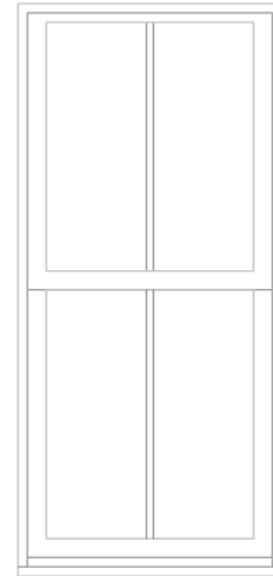
Photo (Interior)



Photo (Exterior)



Proposed Replacement





# SHORE POINT ARCHITECTURE, PA

## Catalog of Existing Windows and Exterior Doors – 17 Webb Avenue, Ocean Grove

Tag number	Type	Size	Material	Significant	Replacement Proposed	Modified Opening	Replacement Info
118	double-hung 1:1	1'-6"x5'-2"	Clear glass / wood	Y	Y	N	Andersen 400s custom size (match exist), full frame, 2:2, DH*

\* If the window replacement is approved by the HPC, the interior window trim is to be removed so contractor can verify existing window frame sizes to ensure new windows (custom size, as required) match existing.

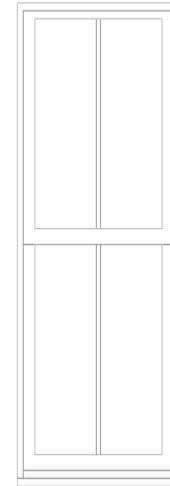
Photo (Interior)



Photo (Exterior)



Proposed Replacement



# SHORE POINT ARCHITECTURE, PA

## Catalog of Existing Windows and Exterior Doors – 17 Webb Avenue, Ocean Grove

Tag number	Type	Size	Material	Significant	Replacement Proposed	Modified Opening	Additional Info
119	Picture Diamond lite over clear glass	3'-10"x5'-3"	Clear glass / wood	Y	N	N	Repair damaged components as required. Scrape, clean and repaint.

Photo (Interior)



Photo (Exterior)





# SHORE POINT ARCHITECTURE, PA

## Catalog of Existing Windows and Exterior Doors – 17 Webb Avenue, Ocean Grove

Tag number	Type	Size	Material	Significant	Replacement Proposed	Modified Opening	Replacement Info
120	double-hung 1:1	1'-6"x5'-2"	Clear glass / wood	Y	Y	N	Andersen 400s custom size (match exist), full frame, 2:2, DH*

\* If the window replacement is approved by the HPC, the interior window trim is to be removed so contractor can verify existing window frame sizes to ensure new windows (custom size, as required) match existing.

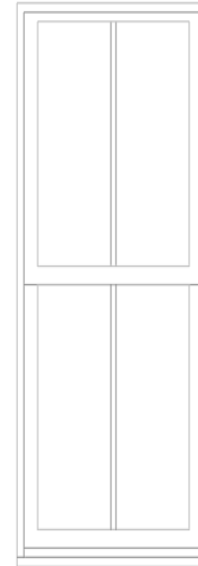
Photo (Interior)



Photo (Exterior)



Proposed Replacement



# SHORE POINT ARCHITECTURE, PA

## Catalog of Existing Windows and Exterior Doors – 17 Webb Avenue, Ocean Grove

Tag number	Type	Size	Material	Significant	Replacement Proposed	Modified Opening	Additional Information
201	double-hung 1:1	1'-10"x5'-2"	Clear glass / wood	N	N/A	N/A	Remove and Infill Opening

Photo (Interior)



Photo (Exterior)

Photo (Detail)

# SHORE POINT ARCHITECTURE, PA

## Catalog of Existing Windows and Exterior Doors – 17 Webb Avenue, Ocean Grove

Tag number	Type	Size	Material	Significant	Replacement Proposed	Modified Opening	Replacement Info
202	double-hung 1:1	3'-2"x5'-2"	Clear glass / wood	N	Y	N	Andersen 400s custom size (match exist), full frame, 2:2, DH*

\* If the window replacement is approved by the HPC, the interior window trim is to be removed so contractor can verify existing window frame sizes to ensure new windows (custom size, as required) match existing.

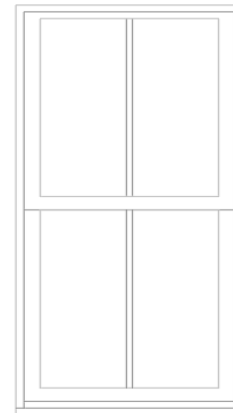
Photo (Interior)



Photo (Exterior)



Proposed Replacement



# SHORE POINT ARCHITECTURE, PA

## Catalog of Existing Windows and Exterior Doors – 17 Webb Avenue, Ocean Grove

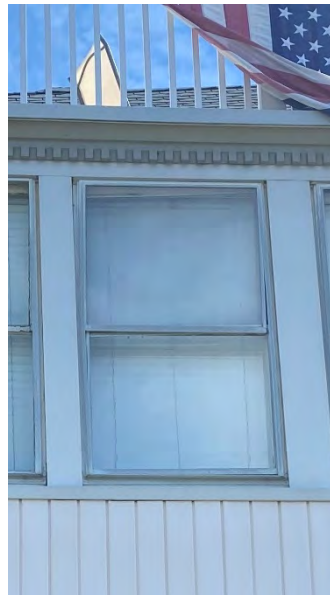
Tag number	Type	Size	Material	Significant	Replacement Proposed	Modified Opening	Replacement Info
203	double-hung 1:1	3'-2"x5'-2"	Clear glass / wood	N	Y	N	Andersen 400s custom size (match exist), full frame, 2:2, DH*

\* If the window replacement is approved by the HPC, the interior window trim is to be removed so contractor can verify existing window frame sizes to ensure new windows (custom size, as required) match existing.

Photo (Interior)



Photo (Exterior)



Proposed Replacement



# SHORE POINT ARCHITECTURE, PA

## Catalog of Existing Windows and Exterior Doors – 17 Webb Avenue, Ocean Grove

Tag number	Type	Size	Material	Significant	Replacement Proposed	Modified Opening	Replacement Info
204	double-hung 1:1	3'-2"x5'-2"	Clear glass / wood	N	Y	N	Andersen 400s custom size (match exist), full frame, 2:2, DH*

\* If the window replacement is approved by the HPC, the interior window trim is to be removed so contractor can verify existing window frame sizes to ensure new windows (custom size, as required) match existing.

Photo (Interior)



Photo (Exterior)



Proposed Replacement



# SHORE POINT ARCHITECTURE, PA

## Catalog of Existing Windows and Exterior Doors – 17 Webb Avenue, Ocean Grove

Tag number	Type	Size	Material	Significant	Replacement Proposed	Modified Opening	Replacement Info
205	double-hung 1:1	3'-2"x5'-2"	Clear glass / wood	N	Y	N	Andersen 400s custom size (match exist), full frame, 2:2, DH*

\* If the window replacement is approved by the HPC, the interior window trim is to be removed so contractor can verify existing window frame sizes to ensure new windows (custom size, as required) match existing.

Photo (Interior)



Photo (Exterior)



Proposed Replacement





# SHORE POINT ARCHITECTURE, PA

## Catalog of Existing Windows and Exterior Doors – 17 Webb Avenue, Ocean Grove

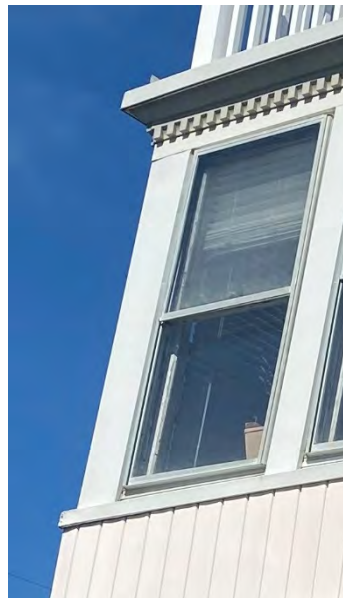
Tag number	Type	Size	Material	Significant	Replacement Proposed	Modified Opening	Replacement Info
206	double-hung 1:1	2'-8"x5'-2"	Clear glass / wood	N	Y	N	Andersen 400s custom size (match exist), full frame, 2:2, DH*

\* If the window replacement is approved by the HPC, the interior window trim is to be removed so contractor can verify existing window frame sizes to ensure new windows (custom size, as required) match existing.

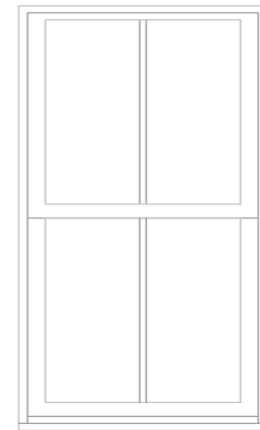
Photo (Interior)



Photo (Exterior)



Proposed Replacement



# SHORE POINT ARCHITECTURE, PA

## Catalog of Existing Windows and Exterior Doors – 17 Webb Avenue, Ocean Grove

Tag number	Type	Size	Material	Significant	Replacement Proposed	Modified Opening	Replacement Info
207	double-hung 1:1	2'-8"x5'-2"	Clear glass / wood	N	Y	N	Andersen 400s custom size (match exist), full frame, 2:2, DH*

\* If the window replacement is approved by the HPC, the interior window trim is to be removed so contractor can verify existing window frame sizes to ensure new windows (custom size, as required) match existing.

Photo (Interior)



Photo (Exterior)



Proposed Replacement



# SHORE POINT ARCHITECTURE, PA

## Catalog of Existing Windows and Exterior Doors – 17 Webb Avenue, Ocean Grove

Tag number	Type	Size	Material	Significant	Replacement Proposed	Modified Opening	Replacement Info
208	double-hung 1:1	2'-8"x5'-2"	Clear glass / wood	N	Y	N	Andersen 400s custom size (match exist), full frame, 2:2, DH*

\* If the window replacement is approved by the HPC, the interior window trim is to be removed so contractor can verify existing window frame sizes to ensure new windows (custom size, as required) match existing.

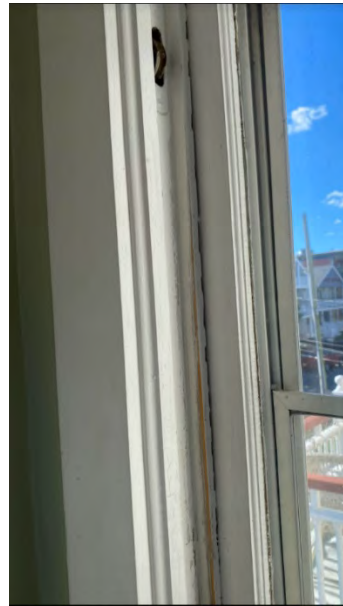
Photo (Interior)



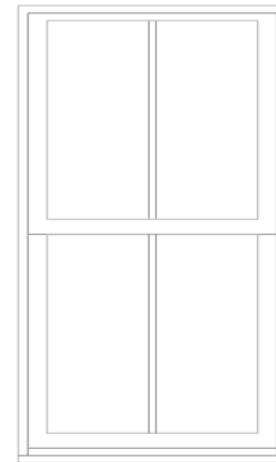
Photo (Exterior)



Photo (Detail)



Proposed Replacement



# SHORE POINT ARCHITECTURE, PA

## Catalog of Existing Windows and Exterior Doors – 17 Webb Avenue, Ocean Grove

Tag number	Type	Size	Material	Significant	Replacement Proposed	Modified Opening	Replacement Info
209	¾ Glass	2'-8"x6'-8"	Wood	N	Y	N	Andersen 400S FWH2668, SDL, 2wx3h

\* If the window replacement is approved by the HPC, the interior window trim is to be removed so contractor can verify existing window frame sizes to ensure new windows (custom size, as required) match existing.

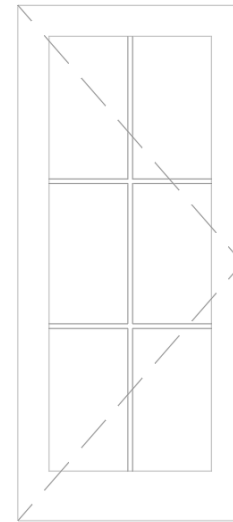
Photo (Interior)



Photo (Exterior)



Proposed Replacement



# SHORE POINT ARCHITECTURE, PA

## Catalog of Existing Windows and Exterior Doors – 17 Webb Avenue, Ocean Grove

Tag number	Type	Size	Material	Significant	Replacement Proposed	Modified Opening	Replacement Info
210	double-hung 2:2	2'-0"x4'-10"	Clear glass / wood	Y	Y	N	Andersen 400s custom size (match exist), full frame, 2:2, DH*

\* If the window replacement is approved by the HPC, the interior window trim is to be removed so contractor can verify existing window frame sizes to ensure new windows (custom size, as required) match existing.

Photo (Interior)



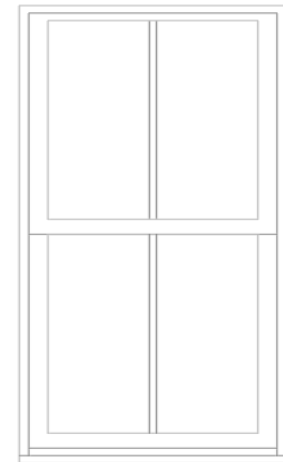
Photo (Exterior)



Photo (Detail)



Proposed Replacement





# SHORE POINT ARCHITECTURE, PA

## Catalog of Existing Windows and Exterior Doors – 17 Webb Avenue, Ocean Grove

Tag number	Type	Size	Material	Significant	Replacement Proposed	Modified Opening	Replacement Info
211	(2) French Doors 18 lite each	2'-8"x6'-8"	Clear glass / wood	Y	Y	N	Andersen 400S FWH hinged 2668, SDL, 2wx3h

Photo (Interior)



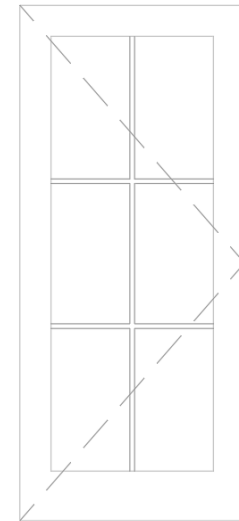
Photo (Exterior)



Photo (Detail)



Proposed Replacement





# SHORE POINT ARCHITECTURE, PA

## Catalog of Existing Windows and Exterior Doors – 17 Webb Avenue, Ocean Grove

Tag number	Type	Size	Material	Significant	Replacement Proposed	Modified Opening	Replacement Info
212	double-hung 2:2	2'-0"x4'-10"	Clear glass / wood	Y	Y	N	Andersen 400s custom size (match exist), full frame, 2:2, DH*

\* If the window replacement is approved by the HPC, the interior window trim is to be removed so contractor can verify existing window frame sizes to ensure new windows (custom size, as required) match existing.

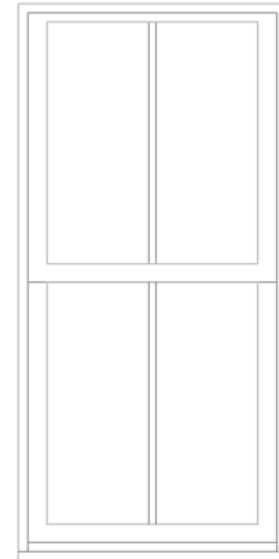
Photo (Interior)



Photo (Exterior)



Proposed Replacement



# SHORE POINT ARCHITECTURE, PA

## Catalog of Existing Windows and Exterior Doors – 17 Webb Avenue, Ocean Grove

Tag number	Type	Size	Material	Significant	Replacement Proposed	Modified Opening	Replacement Info
213	Half Glass Door 4 lite	2'-8"x6'-8"	Clear glass / wood	N	Y	N	Andersen 400S FWH 2668, SDL, 2wx3h

Photo (Interior)



Photo (Exterior)

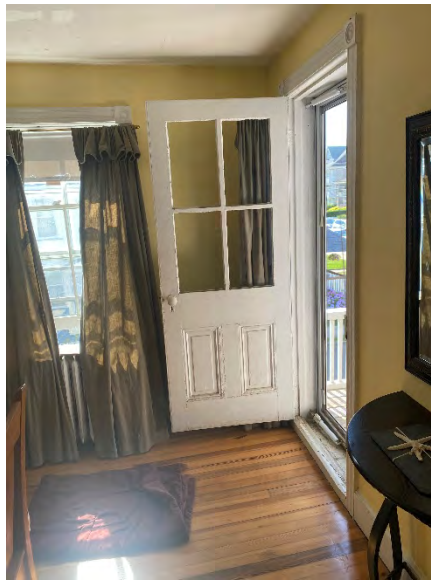
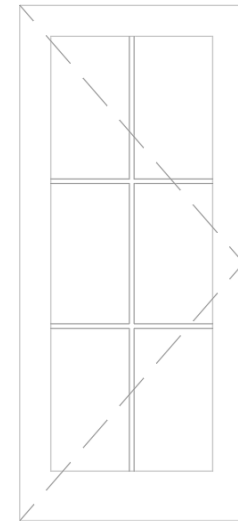


Photo (Detail)



Proposed Replacement



# SHORE POINT ARCHITECTURE, PA

## Catalog of Existing Windows and Exterior Doors – 17 Webb Avenue, Ocean Grove

Tag number	Type	Size	Material	Significant	Replacement Proposed	Modified Opening	Replacement Info
214	double-hung 2:2	2'-4"x5'-2"	Clear glass / wood	Y	Y	N	Andersen 400s custom size (match exist), full frame, 2:2, DH*

\* If the window replacement is approved by the HPC, the interior window trim is to be removed so contractor can verify existing window frame sizes to ensure new windows (custom size, as required) match existing.

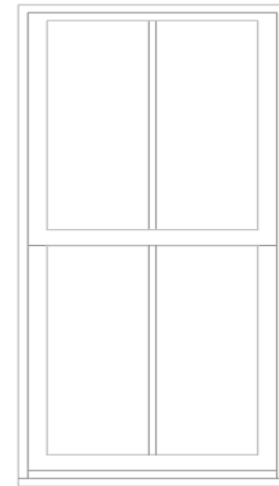
Photo (Interior)



Photo (Exterior)



Proposed Replacement



# SHORE POINT ARCHITECTURE, PA

## Catalog of Existing Windows and Exterior Doors – 17 Webb Avenue, Ocean Grove

Tag number	Type	Size	Material	Significant	Replacement Proposed	Modified Opening	Additional Info
215	Casement Diamond lite	1'-10"x2'-9"	Clear glass / wood	Y	N	N	Repair damaged components as required. Scrape, clean and repaint.

Photo (Interior)



Photo (Exterior)



Photo (Detail)



# SHORE POINT ARCHITECTURE, PA

## Catalog of Existing Windows and Exterior Doors – 17 Webb Avenue, Ocean Grove

Tag number	Type	Size	Material	Significant	Replacement Proposed	Modified Opening	Replacement Info
216	double-hung 2:2	2'-4"x4'-6"	Clear glass / wood	Y	N/A	N/A	To be removed due to construction / placement of addition

NOTE: Glass is missing from both top and bottom sash.

Photo (Interior)



Photo (Exterior)



Photo (Detail)





# SHORE POINT ARCHITECTURE, PA

## Catalog of Existing Windows and Exterior Doors – 17 Webb Avenue, Ocean Grove

Tag number	Type	Size	Material	Significant	Replacement Proposed	Modified Opening	Replacement Info
217	double-hung 2:2	2'-4"x4'-6"	Clear glass / wood	Y	Y	N	Andersen 400s custom size (match exist), full frame, 2:2, DH*

\* If the window replacement is approved by the HPC, the interior window trim is to be removed so contractor can verify existing window frame sizes to ensure new windows (custom size, as required) match existing.

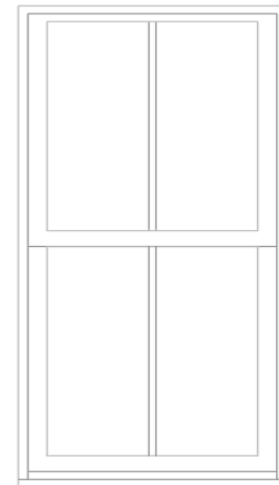
Photo (Interior)



Photo (Exterior)



Proposed Replacement



# SHORE POINT ARCHITECTURE, PA

## Catalog of Existing Windows and Exterior Doors – 17 Webb Avenue, Ocean Grove

Tag number	Type	Size	Material	Significant	Replacement Proposed	Modified Opening	Replacement Info
218	double-hung 2:2	2'-4"x4'-6"	Clear glass / wood	Y	Y	N	Andersen 400s custom size (match exist), full frame, 2:2, DH*

\* If the window replacement is approved by the HPC, the interior window trim is to be removed so contractor can verify existing window frame sizes to ensure new windows (custom size, as required) match existing.

Photo (Interior)



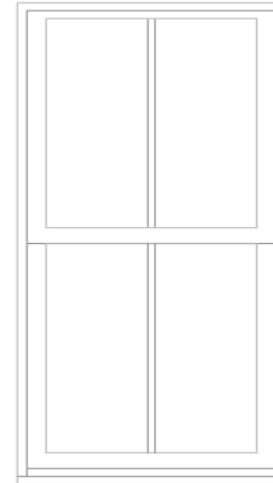
Photo (Exterior)



Photo (Detail)



Proposed Replacement



# SHORE POINT ARCHITECTURE, PA

## Catalog of Existing Windows and Exterior Doors – 17 Webb Avenue, Ocean Grove

Tag number	Type	Size	Material	Significant	Replacement Proposed	Modified Opening	Replacement Info
219	double-hung 2:2	2'-0"x3'-0"	Clear glass / wood	Y	N/A	N/A	Remove and Infill Opening

Photo (Interior)



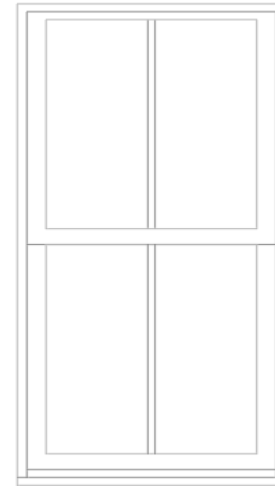
Photo (Exterior)



Photo (Detail)



Proposed Replacement



# SHORE POINT ARCHITECTURE, PA

## Catalog of Existing Windows and Exterior Doors – 17 Webb Avenue, Ocean Grove

Tag number	Type	Size	Material	Significant	Replacement Proposed	Modified Opening	Replacement Info
220	Inswing Casement 4 lite	2'-0"x2'-0"	Clear glass / wood	Y	Y	N	Andersen 400s custom size (match exist), full frame, 4 lite, Awning*

\* If the window replacement is approved by the HPC, the interior window trim is to be removed so contractor can verify existing window frame sizes to ensure new windows (custom size, as required) match existing.

Photo (Interior)



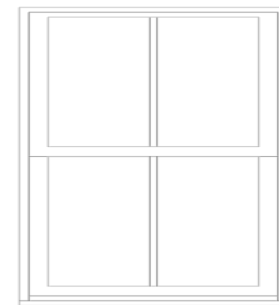
Photo (Exterior)



Photo (Detail)



Proposed Replacement





# SHORE POINT ARCHITECTURE, PA

## Catalog of Existing Windows and Exterior Doors – 17 Webb Avenue, Ocean Grove

Tag number	Type	Size	Material	Significant	Replacement Proposed	Modified Opening	Replacement Info
221	double-hung 2:2	2'-6"x4'-10"	Clear glass / wood	Y	Y	N	Remove and Infill Opening due to stair location

NOTE: Hardware has been removed

Photo (Interior)



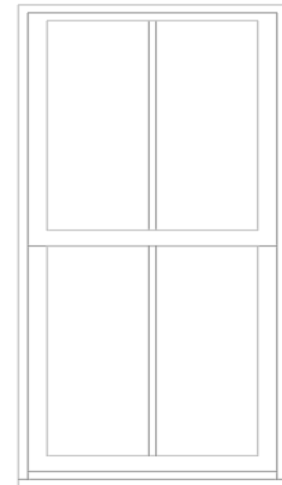
Photo (Exterior)



Photo (Detail)



Proposed Replacement





# SHORE POINT ARCHITECTURE, PA

## Catalog of Existing Windows and Exterior Doors – 17 Webb Avenue, Ocean Grove

Tag number	Type	Size	Material	Significant	Replacement Proposed	Modified Opening	Replacement Info
222	double-hung 1:1	1'-6"x4'-11"	Clear glass / wood	Y	Y	N	Andersen 400s custom size (match exist), full frame, 2:2, DH*

\* If the window replacement is approved by the HPC, the interior window trim is to be removed so contractor can verify existing window frame sizes to ensure new windows (custom size, as required) match existing.

NOTE: Hardware Removed – not operational

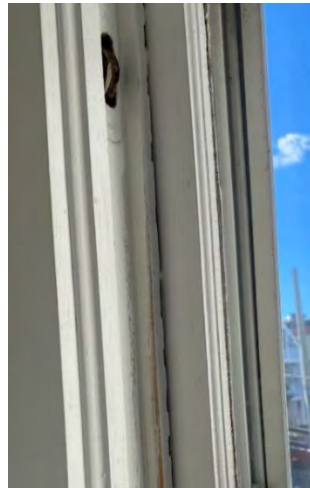
Photo (Interior)



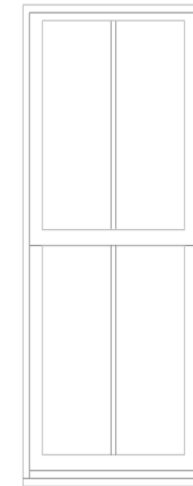
Photo (Exterior)



Photo (Detail)



Proposed Replacement



# SHORE POINT ARCHITECTURE, PA

## Catalog of Existing Windows and Exterior Doors – 17 Webb Avenue, Ocean Grove

Tag number	Type	Size	Material	Significant	Replacement Proposed	Modified Opening	Replacement Info
223	double-hung 1:1	2'-6"x4'-11"	Clear glass / wood	Y	Y	N	Andersen 400s custom size (match exist), full frame, 2:2, DH*

\* If the window replacement is approved by the HPC, the interior window trim is to be removed so contractor can verify existing window frame sizes to ensure new windows (custom size, as required) match existing.

Photo (Interior)



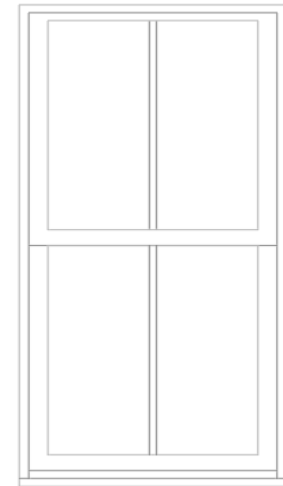
Photo (Exterior)



Photo (Detail)



Proposed Replacement



# SHORE POINT ARCHITECTURE, PA

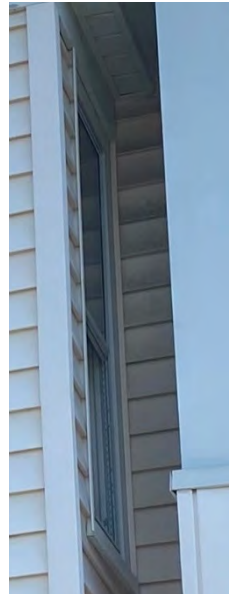
## Catalog of Existing Windows and Exterior Doors – 17 Webb Avenue, Ocean Grove

Tag number	Type	Size	Material	Significant	Replacement Proposed	Modified Opening	Replacement Info
224	double-hung 2:2	1'-6"x4'-11"	Clear glass / wood	Y	N/A	N/A	Remove and infill opening

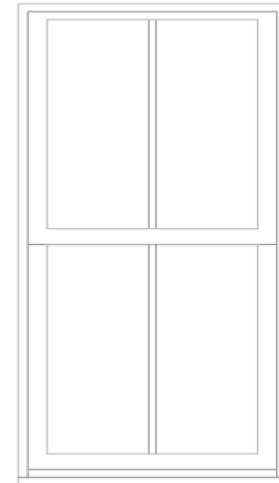
Photo (Interior)



Photo (Exterior)



Proposed Replacement



# SHORE POINT ARCHITECTURE, PA

## Catalog of Existing Windows and Exterior Doors – 17 Webb Avenue, Ocean Grove

Tag number	Type	Size	Material	Significant	Replacement Proposed	Modified Opening	Replacement Info
301	double-hung 2:2	2'-4"x3'-10"	Clear glass / wood	Y	Y	N	Andersen 400s custom size (match exist), full frame, 2:2, DH*

\* If the window replacement is approved by the HPC, the interior window trim is to be removed so contractor can verify existing window frame sizes to ensure new windows (custom size, as required) match existing.

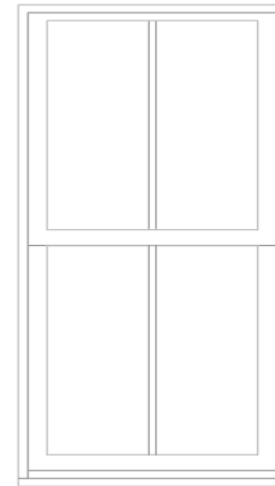
Photo (Interior)



Photo (Exterior)



Photo (Detail)



# SHORE POINT ARCHITECTURE, PA

## Catalog of Existing Windows and Exterior Doors – 17 Webb Avenue, Ocean Grove

Tag number	Type	Size	Material	Significant	Replacement Proposed	Modified Opening	Replacement Info
302	double-hung 2:2	2'-4"x3'-10"	Clear glass / wood	Y	Y	Y	Andersen 400S FWH2068, SDL, 2wx3h

Photo (Interior)



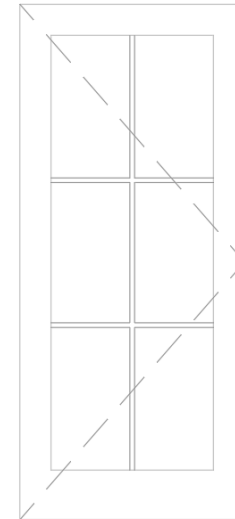
Photo (Exterior)



Photo (Detail)



Proposed Replacement





# SHORE POINT ARCHITECTURE, PA

## Catalog of Existing Windows and Exterior Doors – 17 Webb Avenue, Ocean Grove

Tag number	Type	Size	Material	Significant	Replacement Proposed	Modified Opening	Replacement Info
303	double-hung 2:2	2'-4"x3'-11"	Clear glass / wood	Y	Y	N	Andersen 400s custom size (match exist), full frame, 2:2, DH*

\* If the window replacement is approved by the HPC, the interior window trim is to be removed so contractor can verify existing window frame sizes to ensure new windows (custom size, as required) match existing.

Photo (Interior)



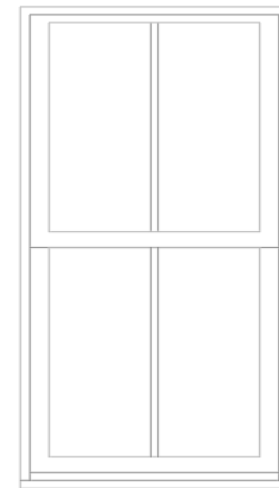
Photo (Exterior)



Photo (Detail)



Proposed Replacement



# SHORE POINT ARCHITECTURE, PA

## Catalog of Existing Windows and Exterior Doors – 17 Webb Avenue, Ocean Grove

Tag number	Type	Size	Material	Significant	Replacement Proposed	Modified Opening	Replacement Info
304	French Doors 3 lite each	(2) 1'-3"x5'-6"	Clear glass / wood	N	Y	Y	Andersen 400s 24310, full frame, 2:2, DH* (maintain exist. head ht)

Photo (Interior)



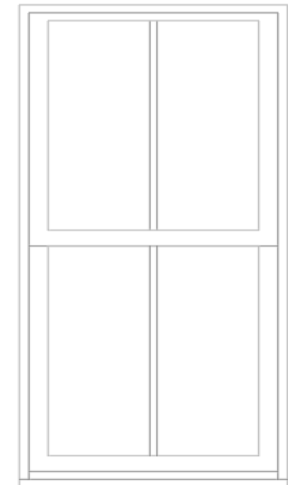
Photo (Exterior)



Photo (Detail)



Proposed Replacement



# SHORE POINT ARCHITECTURE, PA

## Catalog of Existing Windows and Exterior Doors – 17 Webb Avenue, Ocean Grove

Tag number	Type	Size	Material	Significant	Replacement Proposed	Modified Opening	Replacement Info
305	French Doors 3 lite each	(2) 1'-3"x5'-6"	Clear glass / wood	N	Y	Y	Andersen 400s 24310, full frame, 2:2, DH* (maintain exist. head ht)

Photo (Interior)

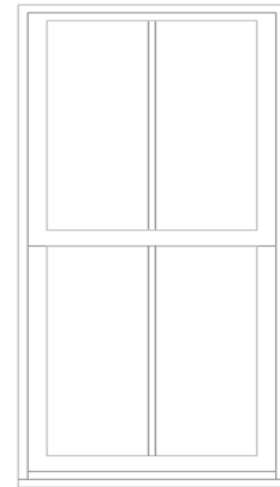


Photo (Exterior)



Photo (Detail)

Proposed Replacement



# SHORE POINT ARCHITECTURE, PA

## Catalog of Existing Windows and Exterior Doors – 17 Webb Avenue, Ocean Grove

Tag number	Type	Size	Material	Significant	Replacement Proposed	Modified Opening	Replacement Info
306	double-hung 2:2	2'-4"x5'-2"	Clear glass / wood	Y	Y	N	Andersen 400s custom size (match exist), full frame, 2:2, DH*

\* If the window replacement is approved by the HPC, the interior window trim is to be removed so contractor can verify existing window frame sizes to ensure new windows (custom size, as required) match existing.

Photo (Interior)

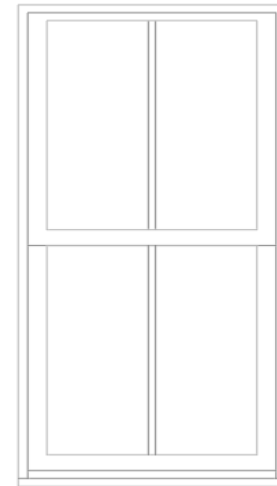


Photo (Exterior)



Photo (Detail)

Proposed Replacement



# SHORE POINT ARCHITECTURE, PA

## Catalog of Existing Windows and Exterior Doors – 17 Webb Avenue, Ocean Grove

Tag number	Type	Size	Material	Significant	Replacement Proposed	Modified Opening	Replacement Info
307	Picture	3'-6"x2'-2"	Clear glass / wood	N	Y	Y* Restore to original window size (re: ext. trim)	Andersen 400s custom size (match exist), full frame, 4 lite, Awning*

\* If the window replacement is approved by the HPC, the interior window trim is to be removed so contractor can verify existing window frame sizes to ensure new windows (custom size, as required) match existing.

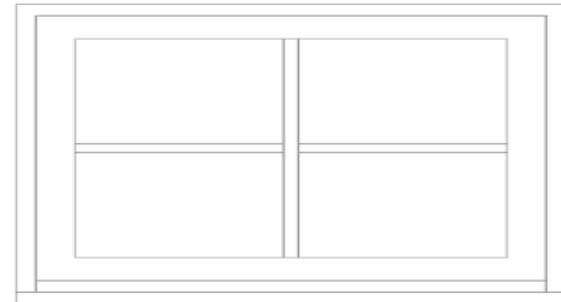
Photo (Interior)



Photo (Exterior)



Photo (Detail)





# SHORE POINT ARCHITECTURE, PA

## Catalog of Existing Windows and Exterior Doors – 17 Webb Avenue, Ocean Grove

Tag number	Type	Size	Material	Significant	Replacement Proposed	Modified Opening	Replacement Info
308	double-hung 2:2	2'-8"x4'-10"	Clear glass / wood	Y	Y	N	Andersen 400s custom size (match exist), full frame, 2:2, DH*

\* If the window replacement is approved by the HPC, the interior window trim is to be removed so contractor can verify existing window frame sizes to ensure new windows (custom size, as required) match existing.

NOTE: Hardware Removed

Photo (Interior)

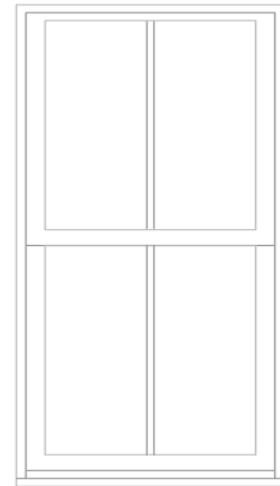


Photo (Exterior)



Photo (Detail)

Proposed Replacement



# SHORE POINT ARCHITECTURE, PA

## Catalog of Existing Windows and Exterior Doors – 17 Webb Avenue, Ocean Grove

Tag number	Type	Size	Material	Significant	Replacement Proposed	Modified Opening	Replacement Info
309	Picture 8 lite	3'-0"x1'-10"	Obscured glass / wood	N	Y	N	Andersen 400s custom size (match exist), full frame, 8 lite, Picture*

\* If the window replacement is approved by the HPC, the interior window trim is to be removed so contractor can verify existing window frame sizes to ensure new windows (custom size, as required) match existing.

Photo (Interior)

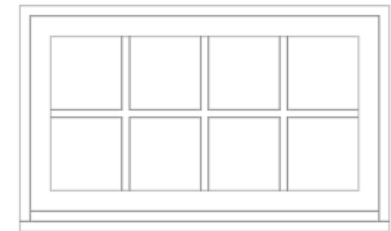


Photo (Exterior)



Photo (Detail)

Proposed Replacement



# SHORE POINT ARCHITECTURE, PA

## Catalog of Existing Windows and Exterior Doors – 17 Webb Avenue, Ocean Grove

Tag number	Type	Size	Material	Significant	Replacement Proposed	Modified Opening	Replacement Info
310	Awning 2 lite	2'-0"x1'-10"	Clear glass / wood	N	Y	N	Andersen 400s custom size (match exist), full frame, 4 lite, Awning*

\* If the window replacement is approved by the HPC, the interior window trim is to be removed so contractor can verify existing window frame sizes to ensure new windows (custom size, as required) match existing.

Photo (Interior)

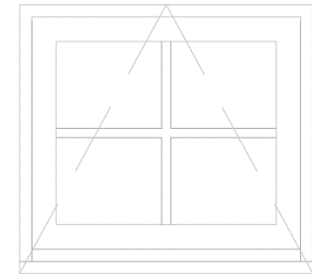


Photo (Exterior)



Photo (Detail)

Proposed Replacement



# SHORE POINT ARCHITECTURE, PA

## Catalog of Existing Windows and Exterior Doors – 17 Webb Avenue, Ocean Grove

Tag number	Type	Size	Material	Significant	Replacement Proposed	Modified Opening	Replacement Info
311	double-hung 2:2	3'-0"x3'-9"	Newer Clear glass / wood	N	Y	N	Andersen 400s custom size (match exist), full frame, 2:2, DH*

\* If the window replacement is approved by the HPC, the interior window trim is to be removed so contractor can verify existing window frame sizes to ensure new windows (custom size, as required) match existing.

Photo (Interior)

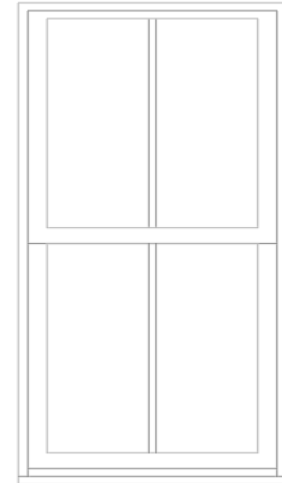


Photo (Exterior)



Photo (Detail)

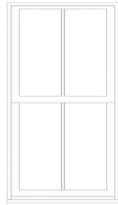

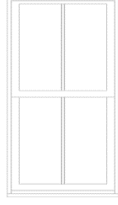
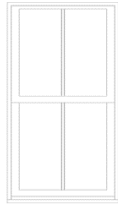
Proposed Replacement



# SHORE POINT

## ARCHITECTURE, PA

### Catalog of Existing Windows and Exterior Doors – 17 Webb Avenue, Ocean Grove

New Windows in new openings at Proposed Addition				
Tag number	Type	Size	Proposed Window	Proposed Window Image
121	double-hung 2:2	2'-2"x3'-4"	Andersen 400s TW2032	
122	French Door 3 lite	2'-6"x6'-8"	"Simpson" ½ clear glass, mahogany.	
123	double-hung 2:2	2'-2"x3'-4"	Andersen 400s TW2032	
225	double-hung 2:2	2'-2"x4'-6"	Andersen 400s TW2042	



# SHORE POINT

ARCHITECTURE, PA

## Catalog of Existing Windows and Exterior Doors – 17 Webb Avenue, Ocean Grove

New Windows in new openings at Proposed Addition				
226	double-hung 2:2	2'-2"x4'-6"	Andersen 400s TW2042	