



**c.a. 1905**    Addition & Alterations



**1905-1910**



**1939-1940**



Shore Point Architecture, PA  
108 South Main Street Ocean Grove, NJ 07756  
P: 732. 774.6900    F: 732.774.7250

**1939-1940** Exterior Alterations  
(Victorian Style Removed)



---

**1983-1984** Exterior Alterations  
(Restoration to Victorian)

---

**1992-1993** Interior Renovations

---

**1990s** Interior Renovations

---

**1993** Interior Renovations

---

**2005** Exterior Roof Renovations and  
Interior Renovations



## EXISTING CONDITIONS



FRONT ELEVATION



SIDE ELEVATION (WEST)



REAR ELEVATION



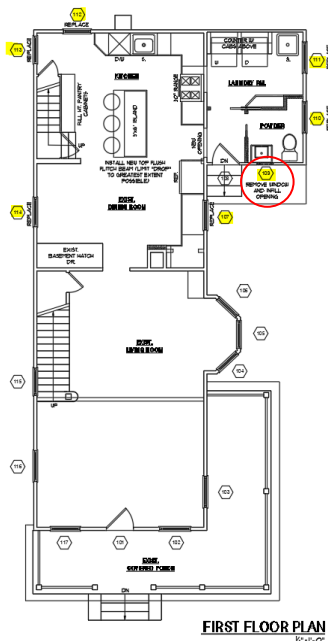
SIDE ELEVATION (EAST)

Shore Point Architecture, PA  
108 South Main Street Ocean Grove, NJ 07756  
P: 732. 774.6900 F: 732.774.7250

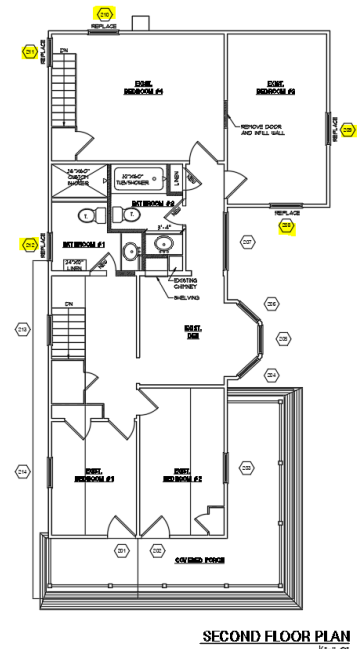


## SUMMARY OF PROPOSED WORK

- The following windows highlighted in plan at the rear of the structure are proposed for replacement. These windows are candidates for replacement because their condition is poor and the required maintenance is beyond the Owner's capacity at this time. The windows scheduled for replacement will have minimal impact on the historic district because they are set far back and/or are out of view from the streetscape. The replacements will be Andersen 400 Series vinyl windows in-kind (size, style, and lite pattern) to the existing. We are also proposing window 109 is removed and infilled. It's condition calls for replacement, but it's location is not prominent to warrant one, between the bathroom and an outdoor shower, that obscures the window from being seen at the streetscape.



Shore Point Architecture, PA  
108 South Main Street Ocean Grove, NJ 07756  
P: 732. 774.6900 F: 732.774.7250





Existing conditions of Window 109 scheduled to be removed and infilled.



## 400 SERIES



## TILT-WASH DOUBLE-HUNG WINDOWS

Andersen® 400 Series tilt-wash double-hung windows are engineered to provide outstanding performance and style. Combined with the tilt-to-clean sash, it's easy to see why it's our best selling double-hung. Exteriors use three different levels of protection from the elements. On the inside you have the choice of natural pine or low-maintenance white, dark bronze or black\* finish. For added style there is a wide range of grille patterns and hardware options.

### DURABLE

- Virtually maintenance-free
- Perma-Shield® exteriors never need painting and won't peel, blister, flake or corrode\*\*
- Frame exterior is protected by a tough vinyl cover that resists dents and repels water and provides long-lasting protection
- Available with Stormwatch® protection for coastal areas

### ENERGY EFFICIENT

- Weather-resistant construction for greater comfort and energy efficiency
- Weatherstripping is designed to seal out drafts, wind and water
- Variety of Low-E4® glass options are available to help control heating and cooling costs in any climate
- Many 400 Series tilt-wash double-hung windows have options that make them ENERGY STAR® v. 6.0 certified throughout the U.S.



### BEAUTIFUL

- Seven exterior color options
- Natural pine, white, dark bronze or black\* interiors
- Add style with grilles, exterior trim or patterned glass

### EXTERIOR COLORS



\*Dark Bronze and Black interiors are only available with Dark Bronze and Black exteriors respectively. See your Andersen dealer for availability. \*\*Visit [andersenwindows.com/warranty](http://andersenwindows.com/warranty) for details. "ENERGY STAR" is a registered trademark of the U.S. Environmental Protection Agency.

Shore Point Architecture, PA  
108 South Main Street Ocean Grove, NJ 07756  
P: 732. 774.6900 F: 732.774.7250