

EXTERIOR SIGN

MEDLINE INDUSTRIES

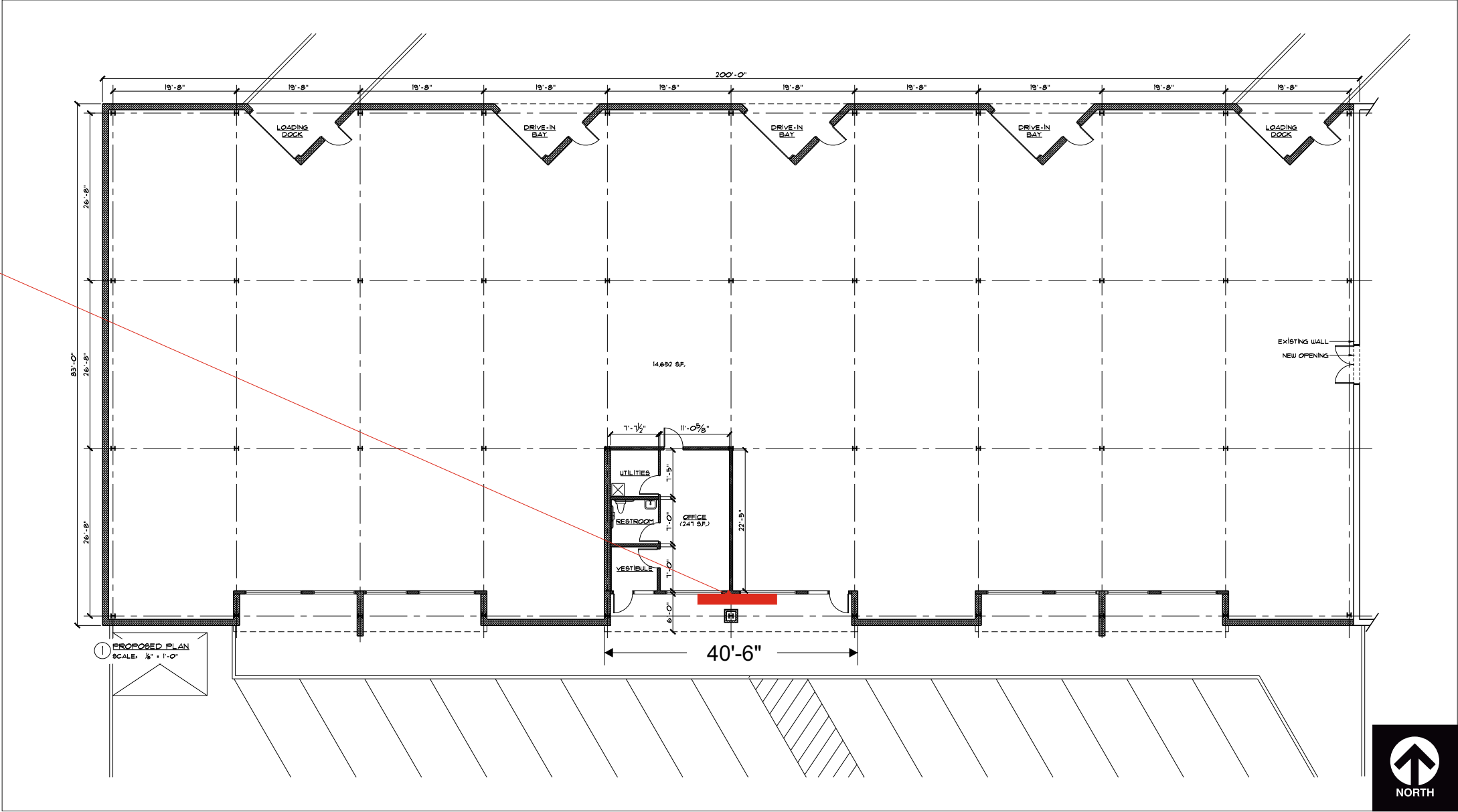
MEDLINE INDUSTRIES

SITE PLAN

FULL BUILDING LINEAR FRONTAGE: 200'-0"
FOUR STAR DEVELOPERS - MEDLINE INDUSTRIES FRONTAGE: 40'-6"

1.0 ILLUMINATED
WALL CABINET SIGN

MEDLINE INDUSTRIES



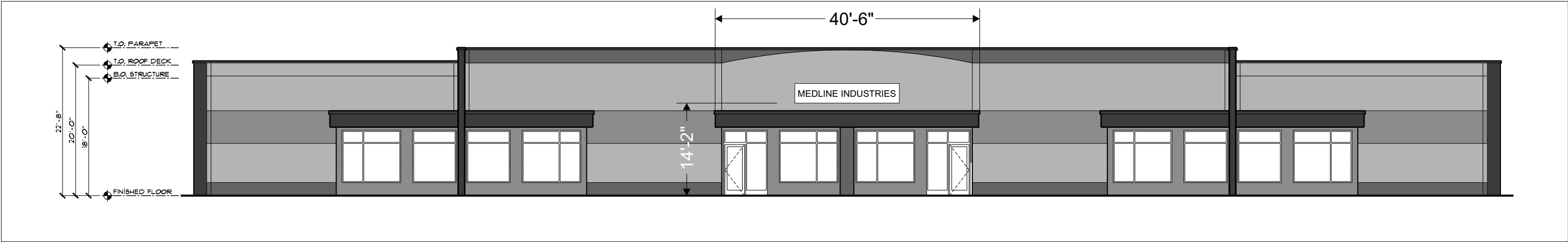
Scale: NTS

1.0 ILLUMINATED WALL CABINET SIGN

NIGHT VIEW

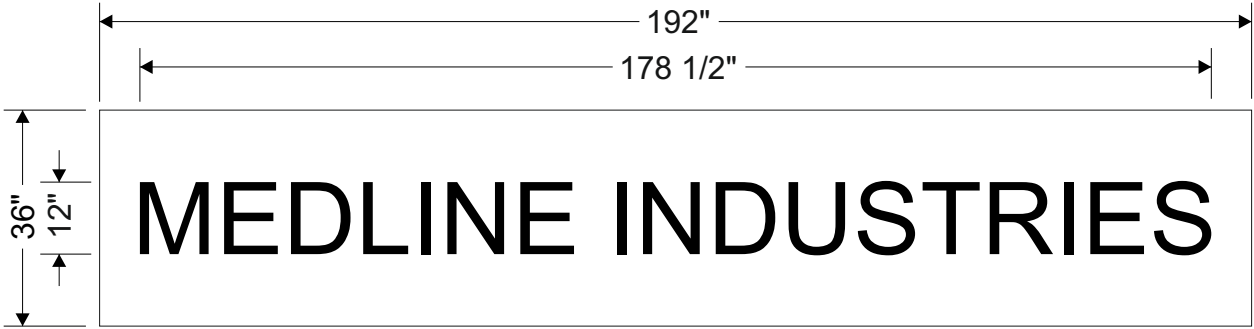


FOUR STAR DEVELOPERS - MEDLINE INDUSTRIES FRONTAGE: 40'-6"
SIGN SQ.FT.: 48



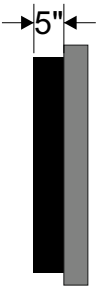
PROPOSED ELEVATION (DAY VIEW)
SACLE: 1/16"= 1'-0"

1.0 ILLUMINATED WALL CABINET SIGN



1.0 Illuminated Wall Cabinet Sign Qty.: 1
Scale: 3/8"= 1'-0" Sq.Ft.: 48

NOTE: CONFIRMATION OF ARTWORK IS REQUIRED.



End View

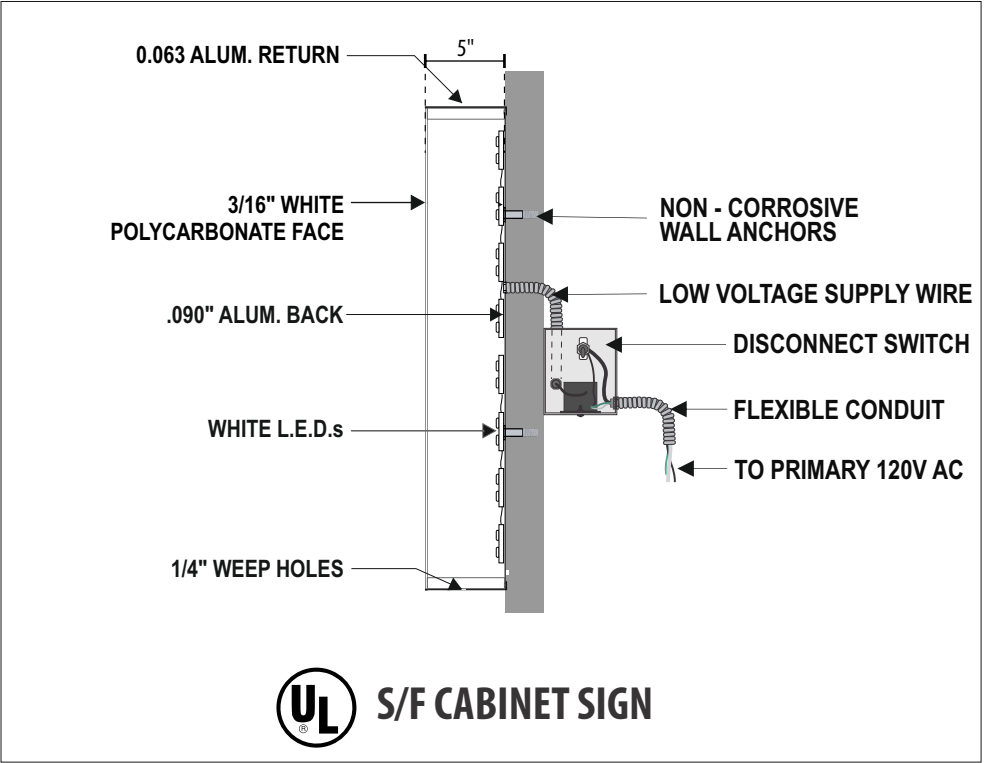
VINYL/ COLOR SPEC:

Digitally printed graphics to match provided CMYK colors

SIGN SPECIFICATIONS -

RETURN: 5" x .063" aluminum returns PTM Black
FACES: 3/16" Polycarbonate face with digitally printed vinyl graphics
LED's: White LED's
BACKS: .090" Aluminum backs

INSTALL: Mounted to wall with mounting cleats



1624 Jacksonville Rd. Burlington NJ 08016
888.588.9057 • EffectiveSignWorks.com

Drawing Number:
250514-03
Start Date: 05/15/2025

Sales:
N/A
Designer:
IDV

Client:
**Four Star Developers -
Medline Industries - Neptune , NJ**

Site Address:
1301 Corlies Ave (Rte 33) #3e, Neptune, NJ 07753 United States
File Name: 250514-03 Four Star Developers - Medline Industries - Neptune , NJ

Revisions: 06/13/2025 - 250514-02 1.0 Dimensions Updated
06/25/2025 - 250514-03 1.0 Face Material Updated

Drawing Path:

I have carefully reviewed this proof for accuracy including spelling, and authorize production in accordance with this document.

SIGN

X

CUSTOMER APPROVAL AND DATE