






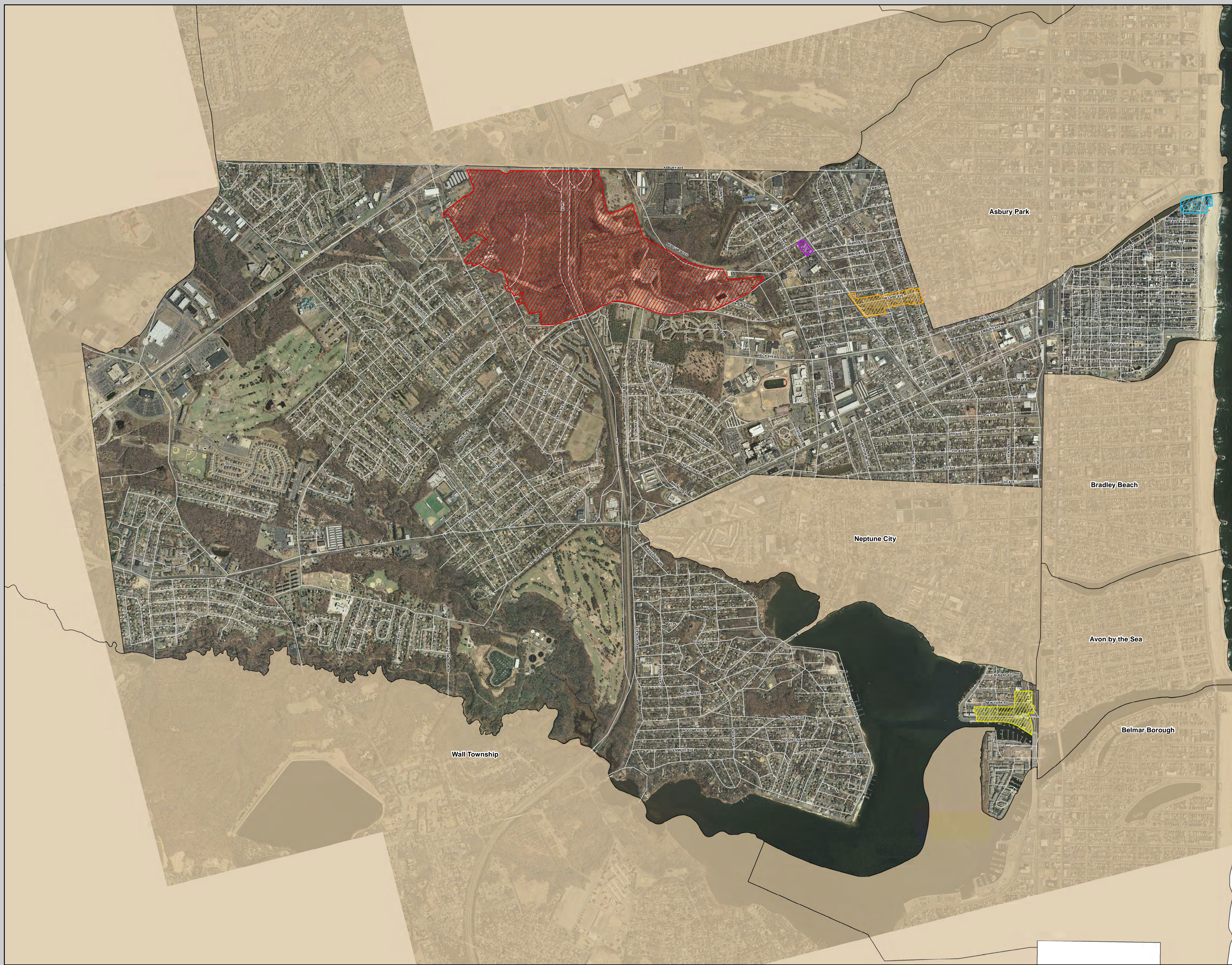
**FIGURE 6
REDEVELOPMENT AREAS MAP**

**TOWNSHIP OF NEPTUNE
MONMOUTH COUNTY
NEW JERSEY**



Legend

-  High Pointe Park - Route 18 Redevelopment Area
-  West Lake Avenue Redevelopment Area (Phase I Completed)
-  North Channel Redevelopment Area (Completed)
-  Ocean Grove North End Redevelopment Area
-  Route 35 & West Bangs Avenue Redevelopment Area



CONSULTING & MUNICIPAL ENGINEERS

3141 BORDENTOWN AVENUE, PARLIN, N.J. 08859
1460 ROUTE 9 SOUTH HOWELL, N.J. 07731
3759 ROUTE 1 SOUTH SUITE 100, MONMOUTH JUNCTION, NJ 08852
1 GREENTREE CENTER SUITE 201, MARLTON, NJ 08053

WWW.CMEUSA1.COM

DATE 08/17/2011	SCALE 1" = 1000'	CREATED BY JEC
--------------------	---------------------	-------------------