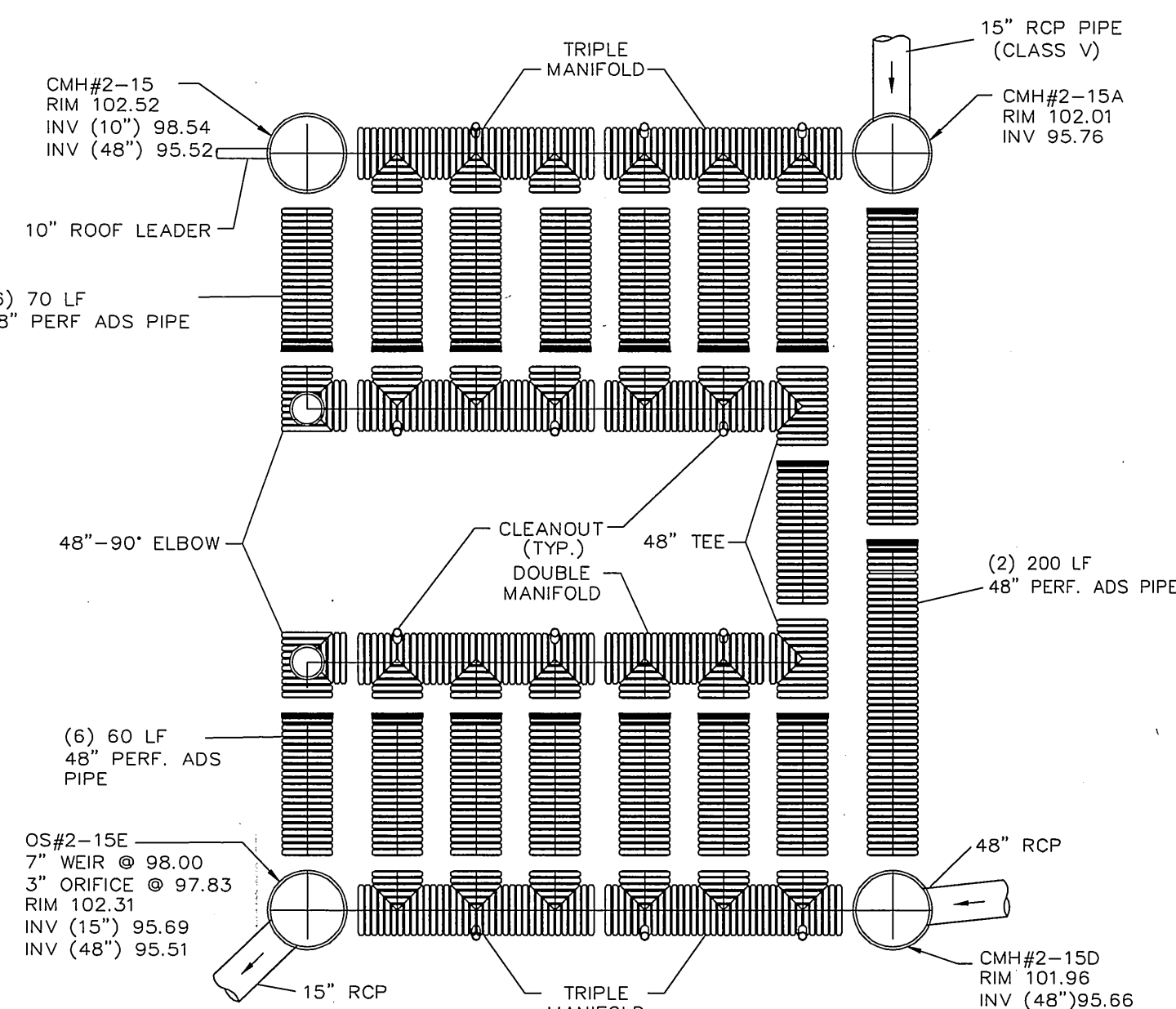


30" ADS DETENTION DETAIL
(PLAN VIEW)
NOT TO SCALE

NOTES:

1.) INSTALLATION PER CONTRACTOR'S NOTES, ABOVE GRADE STRUCTURES FIELD VERIFIED BY DW SMITH PERSONNEL DURING NOVEMBER, 30, 2012 THRU FEBRUARY 7, 2013 (SEE GENERAL NOTE 4).



48" ADS RECHARGE DETAIL
(PLAN VIEW)
NOT TO SCALE

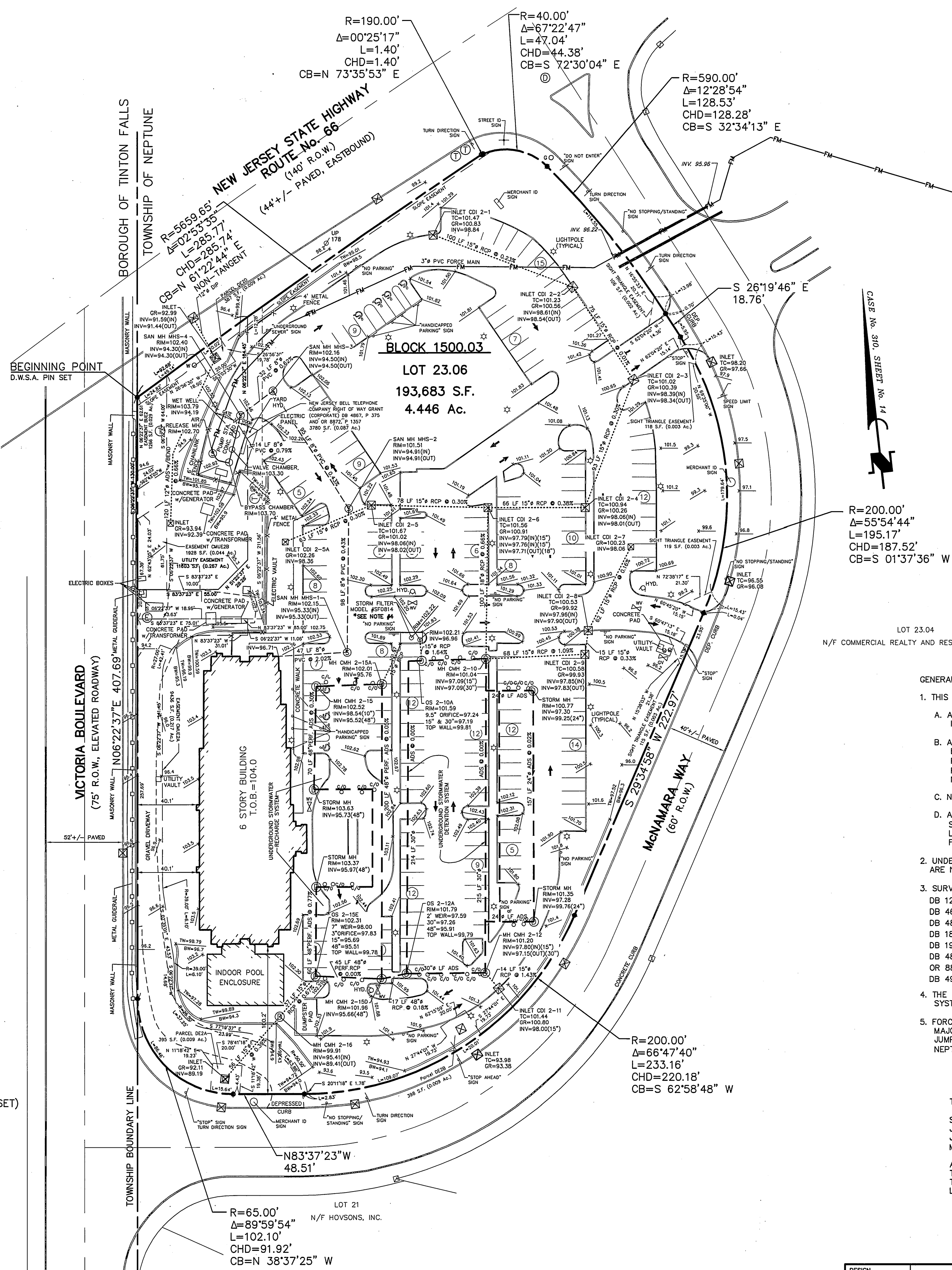
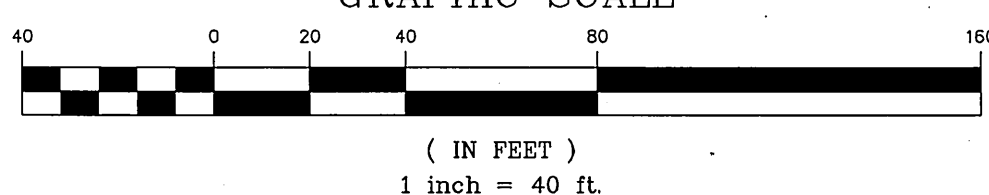
NOTES:

1.) INSTALLATION PER CONTRACTOR'S NOTES, ABOVE GRADE STRUCTURES FIELD VERIFIED BY DW SMITH PERSONNEL DURING NOVEMBER, 30, 2012 THRU FEBRUARY 7, 2013 (SEE GENERAL NOTE 4).

LEGEND

- ☐ MONUMENT FOUND (PREVIOUSLY SET)
- D.W.S.A. PIN SET
- CURB LINE
- EDGE OF PAVEMENT
- WOODS LINE
- ⊗ UTILITY POLE
- ⊗ DRAINAGE INLET
- ⊗ DRAINAGE MANHOLE
- ⊗ SANITARY MANHOLE
- ⊗ WATER MANHOLE
- ⊗ ELECTRIC MANHOLE
- ⊗ FIRE HYDRANT
- ⊗ CLEANOUT
- ⊗ LIGHT POLE
- ⊗ SIGN
- ⊗ STREET SIGN
- ⊗ WATER VALVE
- ⊗ GAS VALVE

GRAPHIC SCALE



GENERAL NOTES:

- THIS SURVEY HAS BEEN PREPARED IN ACCORDANCE WITH THE FOLLOWING:
 - A COMMITMENT TO PROVIDE TITLE INSURANCE BY COMMONWEALTH AGENCY, INC., FILE NO. ORNJ11-2037, EFFECTIVE DATE AUGUST 1, 2011.
 - A PLAN ENTITLED, "MINOR SUBDIVISION, LOT 23.02 & PART OF LOT 23.03, BLOCK 1500, TAX MAP SHEETS 48.03 & 49.02, JUMPING BROOK CORPORATE PARK, SITUATE IN NEPTUNE TOWNSHIP, MONMOUTH COUNTY, NEW JERSEY," AS FILED IN THE MONMOUTH COUNTY CLERK'S OFFICE ON JULY 7, 2011, IN CASE No. 310, SHEET No. 14.
 - NEPTUNE TOWNSHIP TAX MAP SHEETS No. 48.03 AND 49.02.
 - ACTUAL FIELD SURVEY MADE ON THE GROUND BY FIELD PERSONNEL OF DW SMITH ASSOCIATES, LLC, AS COMPLETED AUGUST 17, 2011 AND FOUNDATION LOCATION ON JANUARY 23, 2012, ASBUILT SURVEY NOVEMBER 30, 2012 THRU FEBRUARY 1, 2013.
- UNDERGROUND IMPROVEMENTS AND/OR UNDERGROUND ENCROACHMENTS, IF ANY, ARE NOT SHOWN HEREON.
- SURVEY SUBJECT TO THE FOLLOWING PER TITLE COMMITMENT (NOTE 1.A.):

DB 1284, P. 8 - NOT PLOTTABLE	DB 5670, P. 622 - NOT PLOTTABLE
DB 4857, P. 817 - NOT PLOTTABLE	DB 5670, P. 637 - NOT LOCATED ON SURVEYED PROPERTY
DB 4836, P. 643 - NOT PLOTTABLE	OR 8851, P. 8686 - NOT PLOTTABLE
DB 1876, P. 495 - NOT PLOTTABLE	OR 8851, P. 8686 - NOT PLOTTABLE
DB 1907, P. 145 - NOT PLOTTABLE	OR 8833, P. 9260 - AS SHOWN
DB 4867, P. 375 - AS SHOWN	OR 8833, P. 9311 - NOT LOCATED ON SURVEYED PROPERTY
OR 8872, P. 1357 - AS SHOWN	EASEMENTS AS SHOWN ON FILED MAP CASE No. 310, SHEET No. 14
DB 4952, P. 76 - NOT PLOTTABLE	
- FORCE MAIN AS-BUILT IN ACCORDANCE WITH A CERTAIN PLAN ENTITLED "PRELIMINARY & FINAL MAJOR SITE PLAN, LOTS 23.02 & 23.03, BLOCK 1500, TAX MAP SHEETS 48.03 & 49.02, JUMPING BROOK CORPORATE PARK, SANITARY FORCE MAIN ASBUILT, PHASE 1, SITUATED IN NEPTUNE TOWNSHIP, MONMOUTH COUNTY, NEW JERSEY" BY DW SMITH ASSOCIATES, LLC.

THIS SURVEY CERTIFIED TO:

STEVE SILVER NEPTUNE, LLC; RON SCHAFFER NEPTUNE, LLC; ART HELMICK NEPTUNE, LLC; JOAN MALCHIONE NEPTUNE, LLC; COX NEPTUNE, LLC; DAVE GRAYSON NEPTUNE, LLC; JASON WHITTAKER NEPTUNE, LLC; COMMONWEALTH AGENCY, INC.; MCCOLLUM THOMAS, LLP; MORRIS JAMES, LLP; FLASTER/GREENBERG, P.C.

AND TO ALL OTHER PARTIES INTERESTED IN TITLE TO PREMISES SURVEYED. THIS SURVEY WAS ACTUALLY MADE ON THE GROUND AND IS CORRECT. THAT THERE ARE NO ENCROACHMENTS EITHER WAY ACROSS PROPERTY LINES EXCEPT AS SHOWN.

THOMAS J. MURPHY
PROFESSIONAL LAND SURVEYOR, LICENSE No. 246503728700

LOCATION SURVEY

TAX MAP

LOT 23.06 BLOCK 1500.03

NEPTUNE TOWNSHIP

MONMOUTH COUNTY, NEW JERSEY

DESIGN	T.J.M.
DRAWN	C.A.K.
CHECKED	C.E.S.
SCALE	1"=40'
JOB No.	08-289.11

DATE	BY	DESCRIPTION
02/07/13	4	C.E.S. REVISED PER TOWNSHIP LETTER DATED JANUARY 30, 2013
12/21/12	3	C.E.S. ADDED POOL AND DUMPSTER ENCLOSURE.
11/30/12	2	C.E.S. CONTINUED SURVEY TO FINAL ASBUILT STATUS
01/23/12	1	T.J.M. ADDED FOUNDATION LOCATION AND REMOVED EDGE OF WOODS, UPDATED TITLEBLOCK, REMAINDER OF SURVEY NOT CONTINUED TO DATE.
DATE	BY	DESCRIPTION
		REVISIONS

THOMAS J. MURPHY
PROFESSIONAL LAND SURVEYOR No. 246503728700

DW SMITH ASSOCIATES, LLC.
Consulting Engineers • Planners • Surveyors
Landscape Designers • Environmental Services
NJ Certificate of Authorization No. 246408122400
149 Yellowbrook Road, Farmingdale, NJ 07727 • (732)363-3850

DATE August 17, 2011
SHEET 1
OF 1