

# HARBOR FREIGHT

15 Rt 35  
**NEPTUNE, NJ**

Project 001629  
Revision 04 VAR 1  
Rev Date 1/13/2025

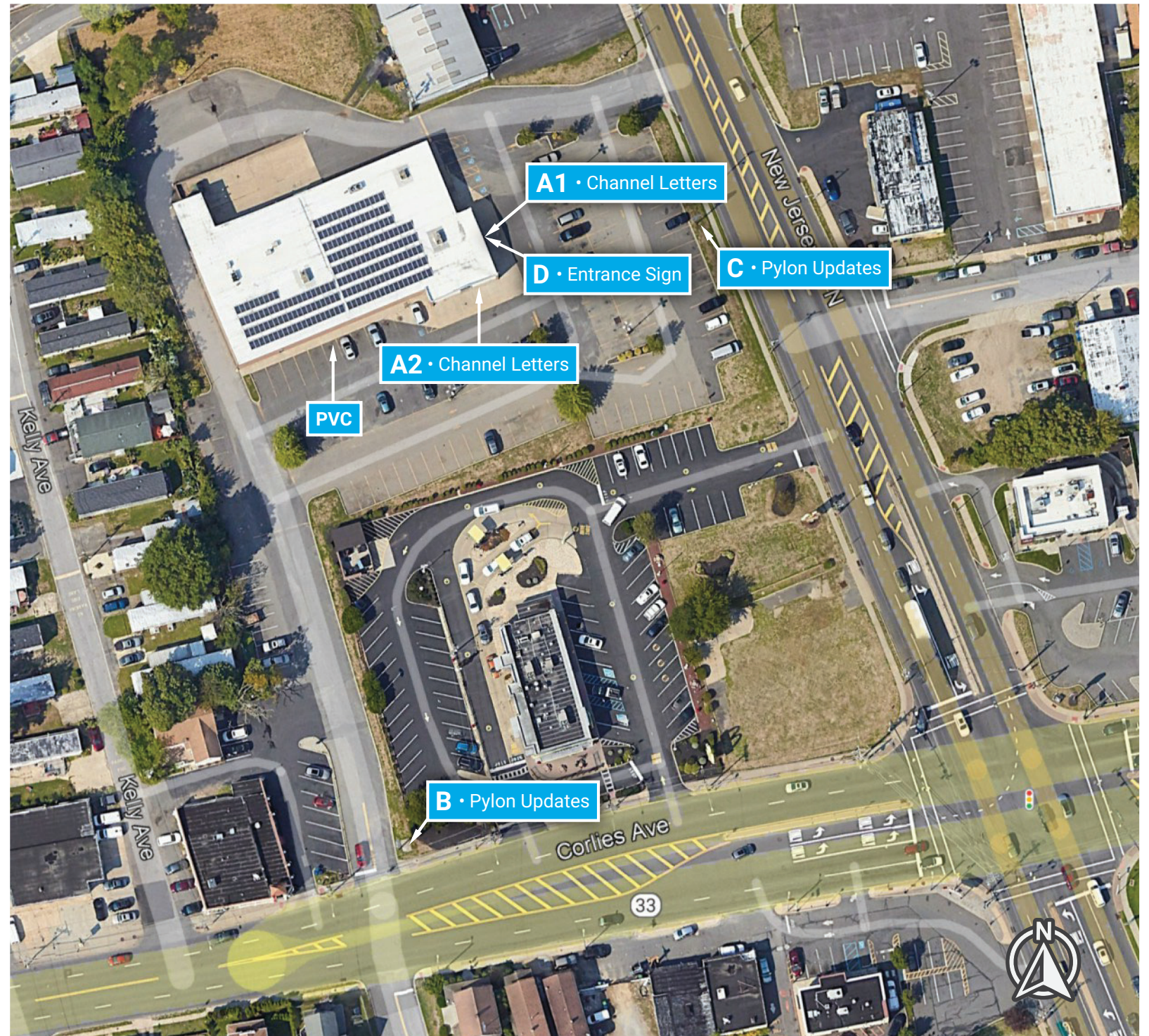
Project Manager  
**Sebastian Carpenter**  
scarpenter@urbansigngroup.com

Sign Package Developed by:



**UrbanSignGroup.com**  
(610) 522-5555  
info@UrbanSignGroup.com

© 2023 Urban Sign Group. All rights reserved.





Advance  
your  
brand.

610-522-5555  
UrbanSignGroup.com

500 Pine St., Suite 3A  
Holmes, PA 19043

Customer Approval

Signature

Date

Landlord Approval

Signature

Date

Above signatures authorize  
Urban Sign Group to manufacture  
as specified including; all sizes,  
spelling, punctuation, and colors.

© 2024 Urban Sign Group  
All rights reserved.

Harbor Freight

15 Rt 35  
Neptune, NJ

Project 001629  
Revision 04 VAR 1  
Rev Date 1/13/2025

Project Manager  
Sebastian Carpenter  
scarpenter@urbansigngroup.com

Salesperson  
Jim Malin

Drawn by KM Page 2

SHEET SIZE 8.5" X 14"



SIDE (STREET FACING) ELEVATION RENDERING  
Scale: 1/8" = 1'-0"



EXISTING CONDITIONS  
Scale: Not to scale.

Advance  
your  
brand.

610-522-5555  
UrbanSignGroup.com

500 Pine St., Suite 3A  
Holmes, PA 19043

Customer Approval

Signature

Date

Landlord Approval

Signature

Date

Above signatures authorize  
Urban Sign Group to manufacture  
as specified including; all sizes,  
spelling, punctuation, and colors.

© 2024 Urban Sign Group  
All rights reserved.

Harbor Freight

15 Rt 35  
Neptune, NJ

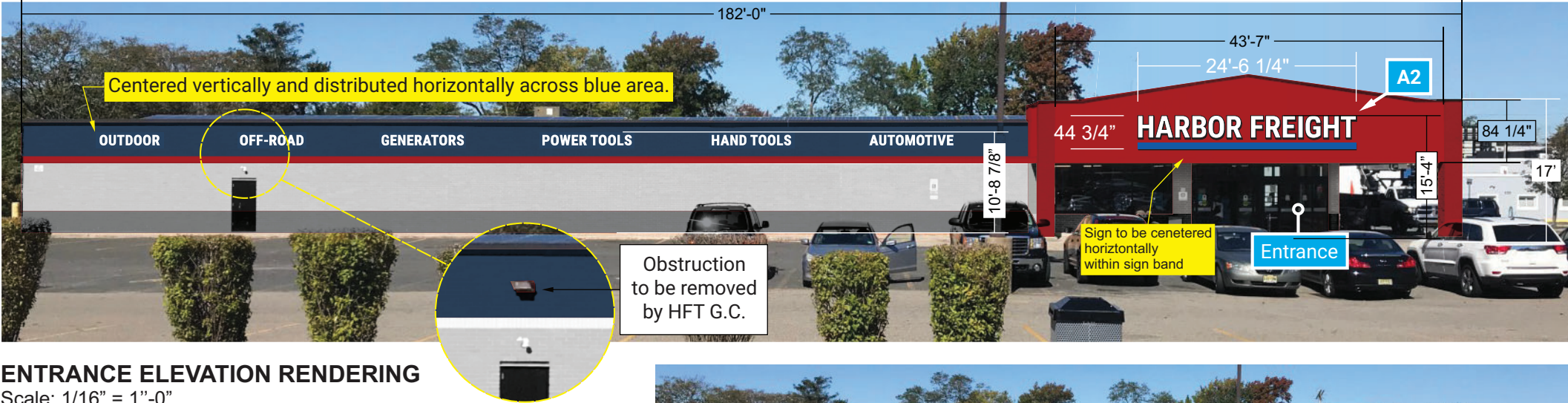
Project 001629  
Revision 04 VAR 1  
Rev Date 1/13/2025

Project Manager  
Sebastian Carpenter  
scarpenter@urbansigngroup.com

Salesperson  
Jim Malin

Drawn by KM Page 3

SHEET SIZE 8.5" X 14"





Advance  
your  
brand.

610-522-5555  
UrbanSignGroup.com

500 Pine St., Suite 3A  
Holmes, PA 19043

Customer Approval

Signature

Date

Landlord Approval

Signature

Date

Above signatures authorize  
Urban Sign Group to manufacture  
as specified including; all sizes,  
spelling, punctuation, and colors.

© 2024 Urban Sign Group  
All rights reserved.

Harbor Freight

15 Rt 35  
Neptune, NJ

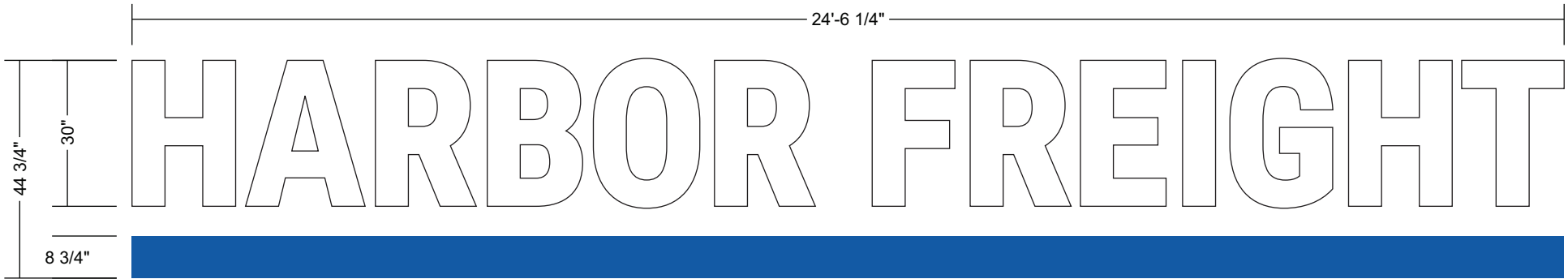
Project 001629  
Revision 04 VAR 1  
Rev Date 1/13/2025

Project Manager  
Sebastian Carpenter  
scarpenter@urbansigngroup.com

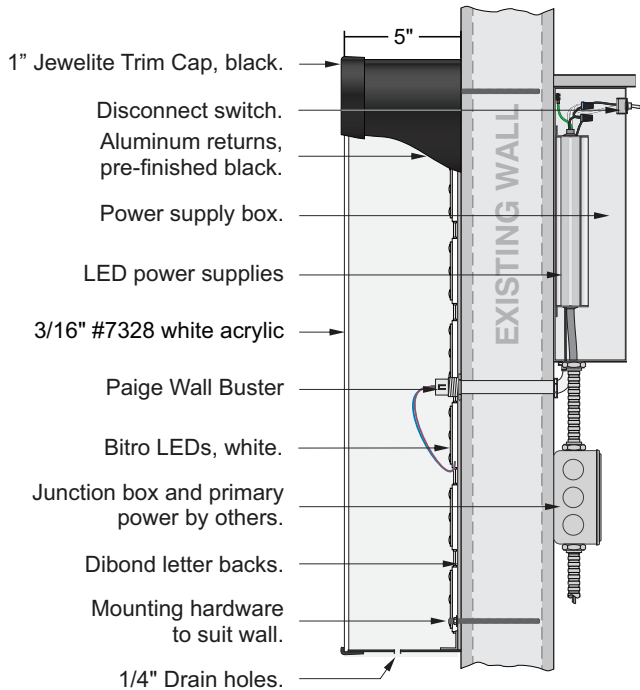
Salesperson  
Jim Malin

Drawn by KM Page 4

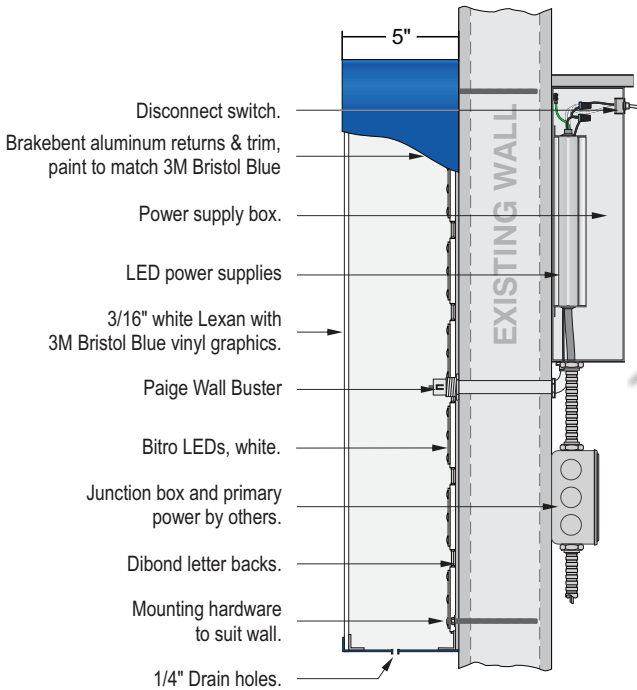
SHEET SIZE 8.5" X 14"



**A CHANNEL LETTERS**  
Quantity: 2 (91.44 SQFT)  
Scale: 3/8" = 1'-0"



**SECTION @ LETTERS**  
Scale: Not to scale.



**SECTION @ RULE LINE**  
Scale: Not to scale.



(Structural Components Only)  
Taqi Khawaja, PE  
NJ PE# 24GE05337200  
NJ COA# 24GA28346400  
Dated: 01/20/2025

Match  
3M 3630-97  
Bristol Blue

Advance  
your  
brand.

610-522-5555  
UrbanSignGroup.com

500 Pine St., Suite 3A  
Holmes, PA 19043

Customer Approval

Signature

Date

Landlord Approval

Signature

Date

Above signatures authorize  
Urban Sign Group to manufacture  
as specified including; all sizes,  
spelling, punctuation, and colors.

© 2024 Urban Sign Group  
All rights reserved.

Harbor Freight

15 Rt 35  
Neptune, NJ

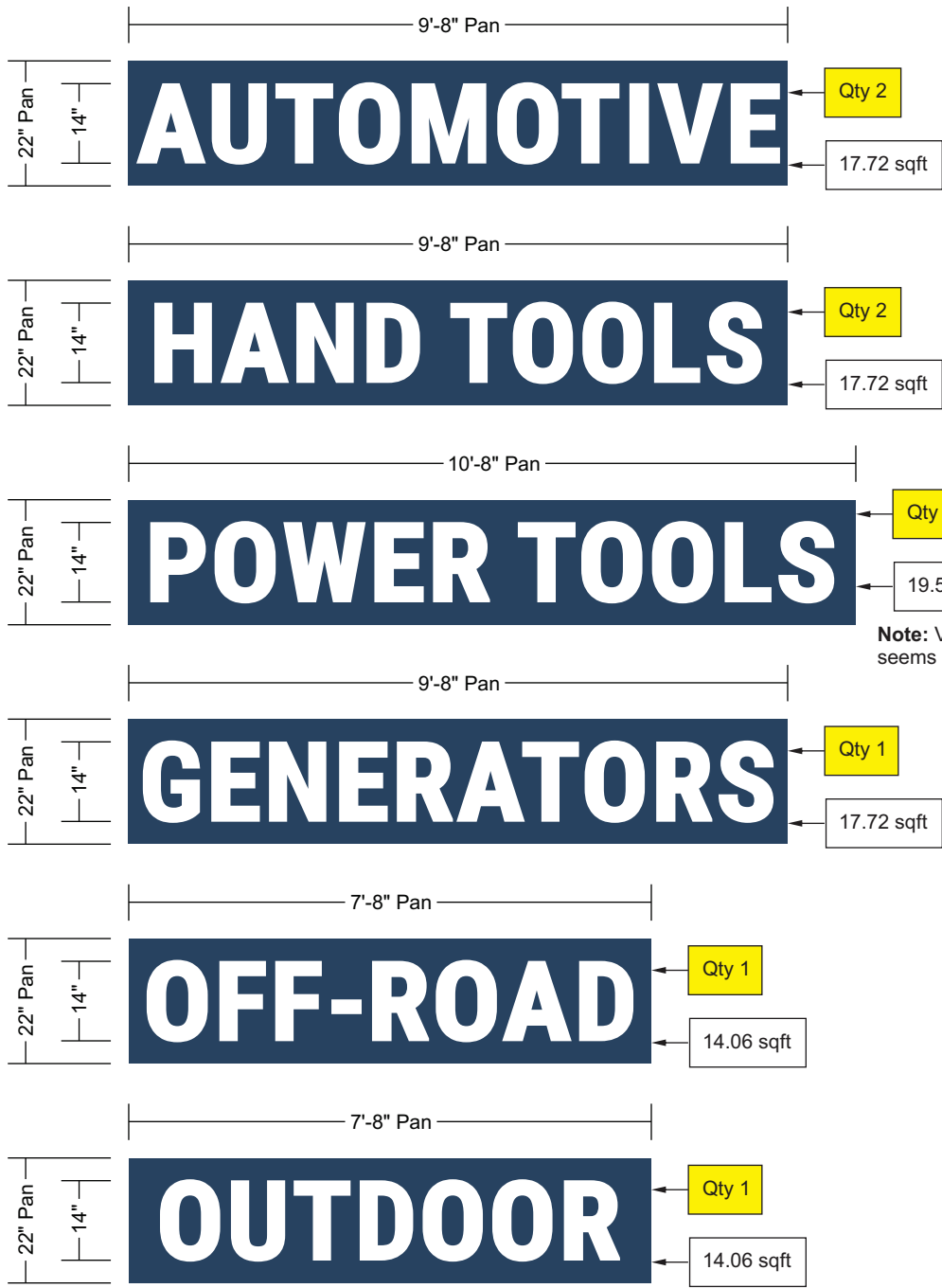
Project 001629  
Revision 04 VAR 1  
Rev Date 1/13/2025

Project Manager  
**Sebastian Carpenter**  
scarpenter@urbansigngroup.com

Salesperson  
**Jim Malin**

Drawn by **KM** Page **5**

SHEET SIZE 8.5" X 14"



PVC

**PVC LETTERS ON PANS - FRONT VIEW**

Quantity: As noted, 9 total  
Scale: 3/8" = 1"-0"

1.5" DEEP BRAKE BENT PAN  
PTD SW 9176 DRESS BLUES

3/4" EXTERIOR GRADE  
WHITE PVC LETTERS

FASTENERS TO SUIT  
WALL THRU ANGLE  
MOUNTING FRAME

1 1/2"

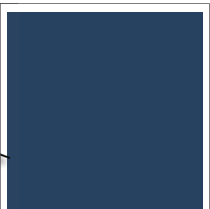
EXISTING WALL

**SECTION DETAIL**

Scale: Not to scale.



(Structural Components Only)  
Taqi Khawaja, PE  
NJ PE# 24GE05337200  
NJ COA# 24GA28346400  
Dated: 01/20/2025



DRESS BLUES  
SW 9176

Advance  
your  
brand.

610-522-5555  
UrbanSignGroup.com

500 Pine St., Suite 3A  
Holmes, PA 19043

Customer Approval

Signature

Date

Landlord Approval

Signature

Date

Above signatures authorize  
Urban Sign Group to manufacture  
as specified including; all sizes,  
spelling, punctuation, and colors.

© 2024 Urban Sign Group  
All rights reserved.

Harbor Freight

15 Rt 35  
Neptune, NJ

Project 001629  
Revision 04 VAR 1  
Rev Date 1/13/2025

Project Manager  
Sebastian Carpenter  
scarpenter@urbansigngroup.com

Salesperson  
Jim Malin

Drawn by KM Page 6

SHEET SIZE 8.5" X 14"



**B** PYLON @ RT 33  
Scale: Not to scale.



**EXISTING CONDITIONS**  
Scale: Not to scale.



**Note:** Paint existing pole and cabinet black.

**B PYLON @ RT 33**  
Quantity: 2  
Scale: 1/2" = 1'-0"



Advance  
your  
brand.

610-522-5555  
UrbanSignGroup.com

500 Pine St., Suite 3A  
Holmes, PA 19043

Customer Approval

Signature

Date

Landlord Approval

Signature

Date

Above signatures authorize  
Urban Sign Group to manufacture  
as specified including; all sizes,  
spelling, punctuation, and colors.

© 2024 Urban Sign Group  
All rights reserved.

Harbor Freight

15 Rt 35  
Neptune, NJ

Project 001629  
Revision 04 VAR 1  
Rev Date 1/13/2025

Project Manager  
**Sebastian Carpenter**  
scarpenter@urbansigngroup.com

Salesperson  
**Jim Malin**

Drawn by **KM** Page **7**

SHEET SIZE 8.5" X 14"



Advance  
your  
brand.

610-522-5555  
UrbanSignGroup.com

500 Pine St., Suite 3A  
Holmes, PA 19043

Customer Approval

Signature

Date

Landlord Approval

Signature

Date

Above signatures authorize  
Urban Sign Group to manufacture  
as specified including; all sizes,  
spelling, punctuation, and colors.

© 2024 Urban Sign Group  
All rights reserved.

Harbor Freight

15 Rt 35  
Neptune, NJ

Project 001629  
Revision 04 VAR 1  
Rev Date 1/13/2025

Project Manager  
**Sebastian Carpenter**  
scarpenter@urbansigngroup.com

Salesperson  
**Jim Malin**

Drawn by KM Page 8

SHEET SIZE 8.5" X 14"



**C** PYLON @ RT 35  
Scale: Not to scale.



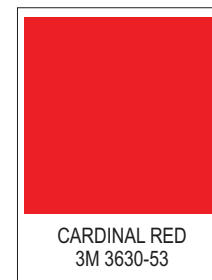
**EXISTING CONDITIONS**  
Scale: Not to scale.





**Note:** Paint existing pole and cabinet black.

**C** **PYLON @ RT 35**  
Quantity: 2  
Scale: 1/2" = 1"-0"



**Advance  
your  
brand.**

610-522-5555  
UrbanSignGroup.com

500 Pine St., Suite 3A  
Holmes, PA 19043

**Customer Approval**

Signature

Date

**Landlord Approval**

Signature

Date

Above signatures authorize  
Urban Sign Group to manufacture  
as specified including; all sizes,  
spelling, punctuation, and colors.

© 2024 Urban Sign Group  
All rights reserved.

**Harbor Freight**

15 Rt 35  
Neptune, NJ

Project 001629  
Revision 04 VAR 1  
Rev Date 1/13/2025

Project Manager  
**Sebastian Carpenter**  
scarpenter@urbansigngroup.com

Salesperson  
**Jim Malin**

Drawn by **KM** Page **9**

SHEET SIZE 8.5" X 14"

Advance  
your  
brand.

610-522-5555  
UrbanSignGroup.com

500 Pine St., Suite 3A  
Holmes, PA 19043

Customer Approval

Signature

Date

Landlord Approval

Signature

Date

Above signatures authorize  
Urban Sign Group to manufacture  
as specified including; all sizes,  
spelling, punctuation, and colors.

© 2024 Urban Sign Group  
All rights reserved.

Harbor Freight

15 Rt 35  
Neptune, NJ

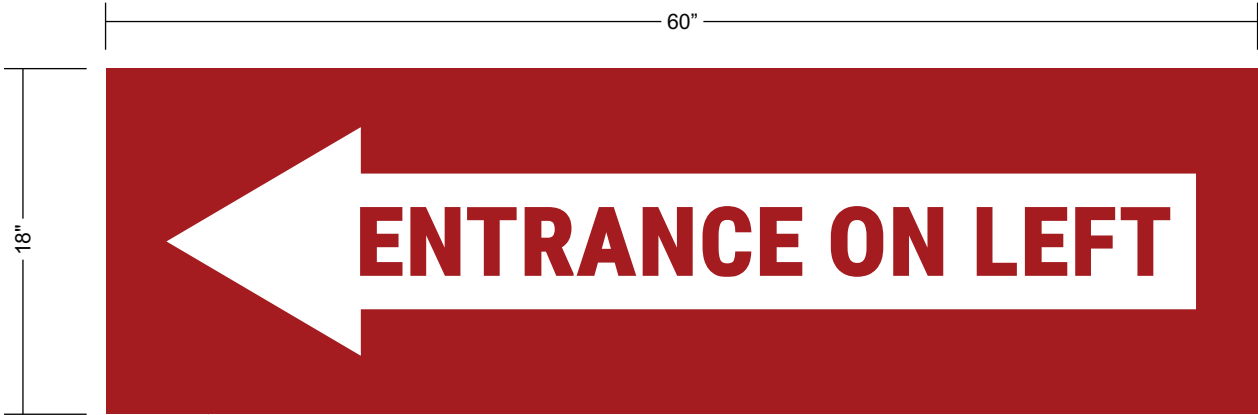
Project 001629  
Revision 04 VAR 1  
Rev Date 1/13/2025

Project Manager  
**Sebastian Carpenter**  
scarpenter@urbansigngroup.com

Salesperson  
**Jim Malin**

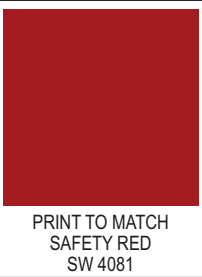
Drawn by KM Page 10

SHEET SIZE 8.5" X 14"

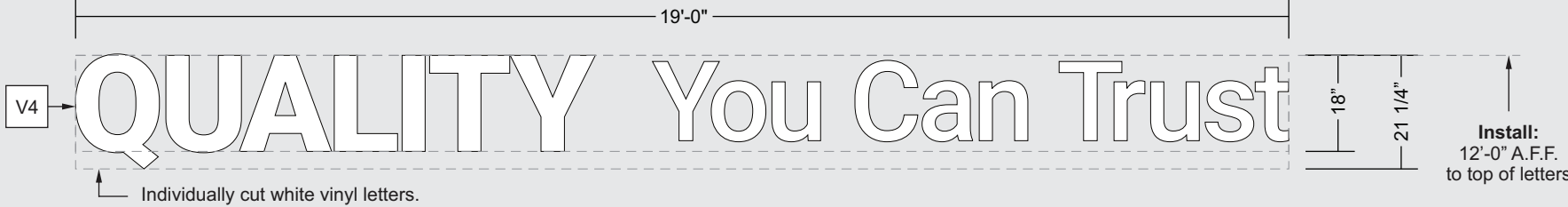


3mm Dibond panel with digitally printed vinyl graphics.

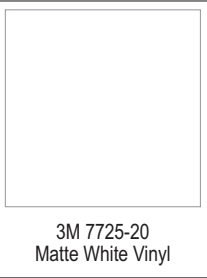
**D** **DIBOND PANEL - FRONT VIEW**  
Quantity: 1 (10.00 SQFT)  
Scale: 1:10







**V INTERIOR VINYL LETTERS - FRONT VIEW**  
Quantity: 1 each  
Scale: 3/8" = 1'-0"



Advance  
your  
brand.

610-522-5555  
UrbanSignGroup.com

500 Pine St., Suite 3A  
Holmes, PA 19043

Customer Approval

Signature

Date

Landlord Approval

Signature

Date

Above signatures authorize Urban Sign Group to manufacture as specified including; all sizes, spelling, punctuation, and colors.

© 2024 Urban Sign Group  
All rights reserved.

Harbor Freight

15 Rt 35  
Neptune, NJ

Project 001629  
Revision 04 VAR 1  
Rev Date 1/13/2025

Project Manager  
Sebastian Carpenter  
scarpenter@urbansigngroup.com

Salesperson  
Jim Malin

Advance  
your  
brand.

610-522-5555  
UrbanSignGroup.com

500 Pine St., Suite 3A  
Holmes, PA 19043

Customer Approval

\_\_\_\_\_  
Signature  
\_\_\_\_\_  
Date

Landlord Approval

\_\_\_\_\_  
Signature  
\_\_\_\_\_  
Date

Above signatures authorize  
Urban Sign Group to manufacture  
as specified including; all sizes,  
spelling, punctuation, and colors.

© 2024 Urban Sign Group  
All rights reserved.

Harbor Freight

15 Rt 35  
Neptune, NJ

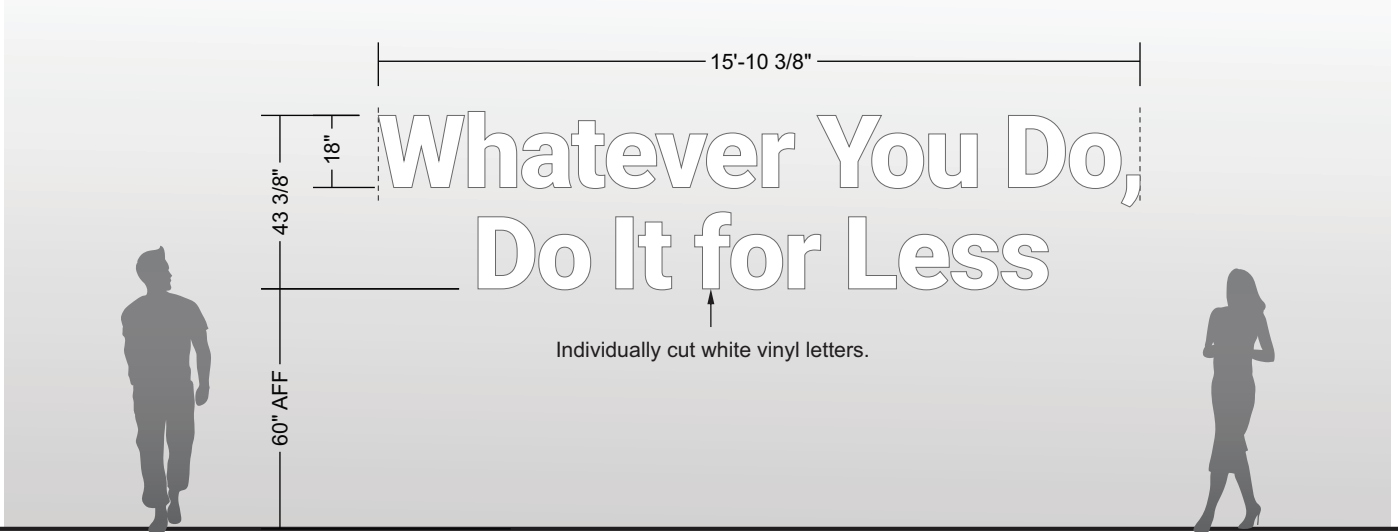
Project 001629  
Revision 04 VAR 1  
Rev Date 1/13/2025

Project Manager  
**Sebastian Carpenter**  
scarpenter@urbansigngroup.com

Salesperson  
**Jim Malin**

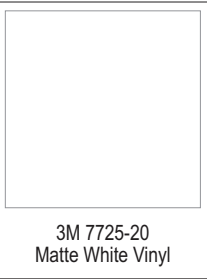
Drawn by **KM** Page **12**

SHEET SIZE 8.5" X 14"



V5

**INTERIOR VINYL LETTERS - TYPICAL ELEVATION**  
Quantity: 1  
Scale: 1/4" = 1'-0"



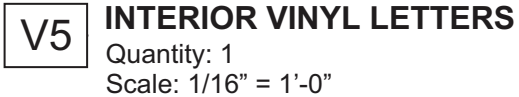


**Any** alterations required by on-site conditions must be verified ***prior to the work being preformed*** by calling:

*On-site personnel are not authorized to approve changes.*

- LOW PRICES That Can't Be Beat
- GREAT TOOLS for Every Job
- VALUE for the Hardworking
- QUALITY You Can Trust

- Whatever You Do, Do It for Less



# Vinyl Installation Guide

## Materials

- 2” wide medium tack masking or painter’s tape.
- Plastic squeegee
- Sharp blade; utility blade or X-Acto Knife
- Cleaning fluid (see below)
- Lint-free cloth.

## Preparation

Surfaces must be cleaned thoroughly with a **non-ammonia** based household cleaner or a 50/50 mix of 70% isopropyl alcohol and water. Once cleaned wipe dry with a lint-free cloth.

**Note:** Do **NOT** use any glass cleaners when preparing application surface.

## Installation Conditions



### Fresh Paint

Wait at least 72 hours



### Temperature

Between 45°F - 90°F



### Humidity

Below 90%

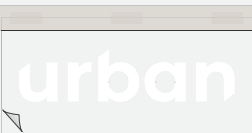
1

Using small pieces of tape along the top edge position the graphic ensuring its location is correct and it is level.



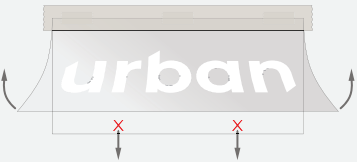
2

Using a continuous piece of tape across the top of the graphic. The tape should be half on the graphic liner and half on the surface the graphic is being applied to.



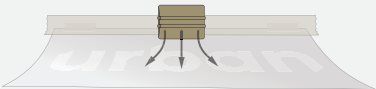
3

Lift the mask and graphic up and away from the wall surface using the tape hinge created in Step 2 to keep the graphic affixed to the wall.



4

Holding the masked graphic use the squeegee to press it onto the wall. Use smooth strokes, apply gentle pressure, work from top to bottom. If creases or large bubbles appear gently lift graphic and reapply.



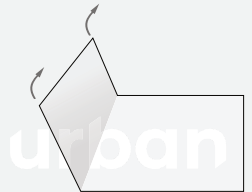
5

Once the masked graphic is on the wall use a squeegee, with firm but yielding pressure and working outward from the center, to carefully remove air and adhere the individual graphic pieces to the wall.



6

Gently lift and remove the graphic mask and all tape.



### Customer Approval

Signature

Date

### Landlord Approval

Signature

Date

Above signatures authorize  
Urban Sign Group to manufacture  
as specified including; all sizes,  
spelling, punctuation, and colors.

© 2024 Urban Sign Group  
All rights reserved.

### Harbor Freight

15 Rt 35  
Neptune, NJ

Project 001629

Revision 04 VAR 1

Rev Date 1/13/2025

Project Manager

**Sebastian Carpenter**  
scarpenter@urbansigngroup.com

Salesperson

**Jim Malin**

Drawn by **KM** Page **14**

SHEET SIZE 8.5" X 14"