

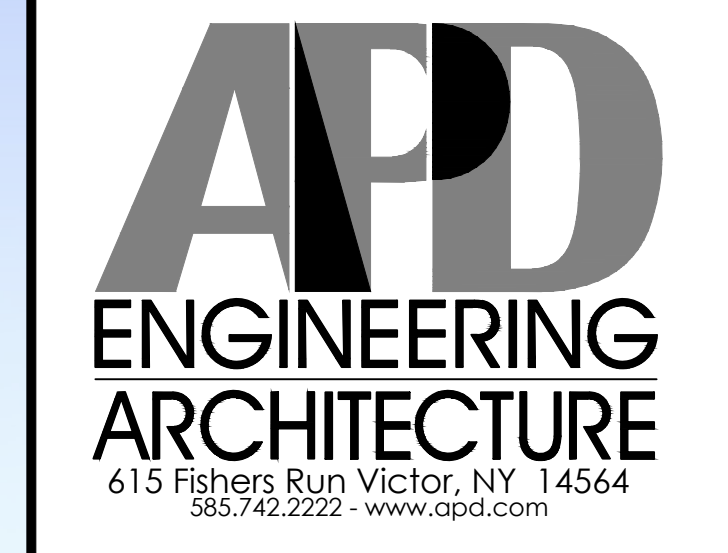
EXTERIOR FINISH SCHEDULE			
KEY	MATERIAL / MFG.	COLOR / NO.	NOTES
A1	PREFINISHED METAL COPING	A1- SILVER - AT HIGH ROOF & CANOPY A1a - AGED BRONZE - AT BRICK A1b - AGED BRONZE - AT NICHIIHA TOWERS A1c - GRANITE - AT RIBBED NICHIIHA	SEE SPEC FOR ADDITIONAL INFO; NOTE AGED BRONZE IS CUSTOM COLOR PAINT (VALSPAR (SW) AGED BRONZE #437R2398) ON POST FORMED ALUMINUM.
A2	SPEC-BRICK CONCRETE MASONRY VENEER	4WXBKI6L (12W @ CART WALL ONLY) STANTON BLEND w/ HOLCIM "ATLANTA RED" MORTAR, MORTAR ALT: SOLOMON 40A RED	CONTACT THE CONCRETE PRODUCTS GROUP AT 800-789-0872 FOR ORDERING SEE SPEC FOR ADDITIONAL INFO
A2B	SPEC-BRICK CONCRETE MASONRY VENEER	4WXBKI6L (12W @ CART WALL ONLY) CHESAPEAKE BLEND w/ HOLCIM "SMITH GRAY" MORTAR, MORTAR ALT: SOLOMON "BSX DARK CHOCOLATE"	CONTACT THE CONCRETE PRODUCTS GROUP AT 800-789-0872 FOR ORDERING SEE SPEC FOR ADDITIONAL INFO
A3	PREFINISHED ALUM. SILL	A3- BRIGHT SILVER A3a - PETERSEN ALUMINUM - "AGED BRONZE"	SEE SPEC FOR ADDITIONAL INFO; NOTE AGED BRONZE IS CUSTOM COLOR PAINT ON POST FORMED ALUMINUM.
A4	ALUMINUM STOREFRONT SYSTEM	ANODIZED ALUM.	RE: DWG. A602
A5	MEMBRANE ROOFING	GRAY	TOP OF SLOPED ROOF, CANOPY ROOF, AND BACK OF RAISED ROOF PROJECTIONS - SEE SPECIFICATIONS APPENDIX "B"
A6	METAL SOFFIT PANELS	A6 - SOLID PANELS - BRIGHT SILVER A6a - 1/2 VENTED PANELS - BRIGHT SILVER	RE: DWG. A301-A304
A7	EXTERIOR PAINT	PT-19 / CL-9	RE: DWG. A603
A8	ALUMINUM CURTAIN WALL SYSTEM	ANODIZED ALUMINUM	RE: DWG. A602
A9	ALUMINUM COMPOSITE PANEL	BRIGHT SILVER	PROVIDE PANEL JOINTS AS SHOWN - PROVIDE ONE PIECE TIGHT FIT EXTRUDED MOLDING INSTALLATION SYSTEM WITH CENTER REVEAL TRIM BETWEEN PANELS AND J TRIM AT PANEL EDGES.
A10	NICHIIHA FIBER CEMENT EXTERIOR CLADDING	VINTAGEWOOD "BARK"	CONTACT NICHIIHA AT 770-805-9466 FOR ORDERING. SEE SPEC FOR TRIM REQUIREMENTS AND ADDITIONAL INFO. ALL INCLUDED TRIM (H, J, L, CORNER, ETC) TO MATCH FCP
A11	BLRD-2	PT-19 / CL-4	RE: DWG A603
A12	BLRD-4		RE: DWG A603
A13	GUARD RAIL TYPE "A"	GALVANIZED STEEL	RE: DWG B2/A507
A14	GUARD RAIL TYPE "B"	GALVANIZED STEEL	RE: DWG B2/A507
A15	BLRD-3	GALVANIZED	RE: DWG A603
A16	DOCK LEVELER / SEAL AND BUMPERS	LEVELER - FACTORY FINISH / SEAL AND BUMPERS - FACTORY FINISH - BLACK	PROVIDE BRICK BEHIND DOCK SEAL
A17	MASONRY CONTROL JOINT		MAX 20' OC
A18	SCUPPER, 16" OVERFLOW SCUPPER & DOWN SPOUT	MATCH COPING ABOVE	RE: DWG A2/A507
A19	ARCHITECTURAL CAST STONE	TANNERSTONE: AG-1	SEE SPEC FOR ADDITIONAL INFORMATION - MORTAR COLOR TO MATCH CAST STONE
A20	ALDI TOWER SIGN	BY SIGN VENDOR	7'-11 1/8" w. x 9'-5 1/2" h.; VERIFY SIGN SIZE PRIOR TO FRAMING OPENING SEE DETAIL C1/A504
A21	CRTB	NATURAL	RE: DWG A603 - SEE STRUCTURAL DWGS

EXTERIOR FINISH SCHEDULE (CONTINUED)			
KEY	MATERIAL / MFG.	COLOR / NO.	NOTES
A22	KNOX BOX	FACTORY FINISH	CONFIRM TYPE AND LOCATION WITH LOCAL FIRE MARSHAL
A23	AUTO DOOR SYSTEM & TRANSOM	ANODIZED ALUMINUM	RE: DWG A601 & A602
A24	SCUPPER, 24" OVERFLOW SCUPPER & DOWN SPOUT	PT-19 / CL-9	RE: DWG A2/A507
A25	8" X 8" PRE-FINISHED ALUM GUTTER	MATCH PREFINISHED METAL COPING	
A26	8" X 8" PRE-FINISHED ALUM DOWNSPOUT	MATCH PREFINISHED METAL COPING	TERMINATE AT CONC. SPLASH BLOCK
A27	ACP H/J TRIM / JOINT COVER		TYPICAL AT EDGES AND BUTT JOINTS OF ACP
A28	NICHIIHA FIBER CEMENT PANEL BASE FLASHING	PETERSEN ALUMINUM - "AGED BRONZE"	SEE SPEC FOR ADDITIONAL INFO; NOTE AGED BRONZE IS CUSTOM COLOR PAINT ON POST FORMED ALUMINUM.
A29	SEE KEYNOTE A2 ABOVE		
A30	DUMPSTER ENCLOSURE		RE: DWG A507
A31	NICHIIHA CONTROL JOINT WITH "H" CLIP		
A32	ALDI REAR LOGO SIGN	BY SIGN VENDOR	7'-9" w. x 3'-1 1/8" h.; SURFACE MOUNTED
E1	EXIT DISCHARGE LIGHT	FACTORY FINISH	MOUNT @ 8'-0" A.F.F.
E2	WALL SCONCE	FACTORY FINISH	MOUNT @ 14'-8" A.F.F.; RE: DWG. A111 FOR DIMENSIONS
E3	JUNCTION BOX WITH COVER FOR FUTURE CARD READER		MOUNT CENTERED @ 46" A.F.F.; SEE ELEC DWGS
E4	UTILITY METERING & C.T.	FACTORY FINISH	SEE ELECTRICAL DWGS
E5	EXTERIOR WALL PACK	FACTORY FINISH	MAN DOORS - MOUNT @ 9'-0" A.F.F., BREAK ROOM WINDOW @ 10'-0" A.F.F., LOADING DOCK - MOUNT @ 12'-0" A.F.F.
E6	EXTERIOR DUPLEX RECEPTACLE	FACTORY FINISH	MOUNT @ 1'-6" A.F.F. IN 4" SQUARE J-BOX
F1	FIRE DEPT. CONNECTION	FACTORY FINISH	SEE FIRE PROTECTION DWGS
F2	MOTOR GONG	FACTORY FINISH	SEE FIRE PROTECTION DWGS
P1	HOSE BIB	FACTORY FINISH	SEE PLUMBING DWGS
P2	RPZ DISCHARGE	FACTORY FINISH	SEE PLUMBING DWGS
P3	GAS METER	FACTORY FINISH	SEE PLUMBING DWGS
XX	GLAZING KEY		RE: DWG A602
XXV	ALIGN KEY		A: ALIGN NICHIIHA PANEL JOINTS AND WINDOW MULLIONS B: ALIGN ALUMINUM COMPOSITE PANEL JOINTS AND WINDOW MULLIONS C: ALIGN NICHIIHA PANEL JOINTS, ALUMINUM COMPOSITE PANEL JOINTS, AND WINDOW MULLIONS

Issued:	Date:
A Issued for Client Review	05/14/21
B	
C	
D	
E	
Revisions:	Date:
1	
2	
3	
4	
5	
6	
7	
8	
9	

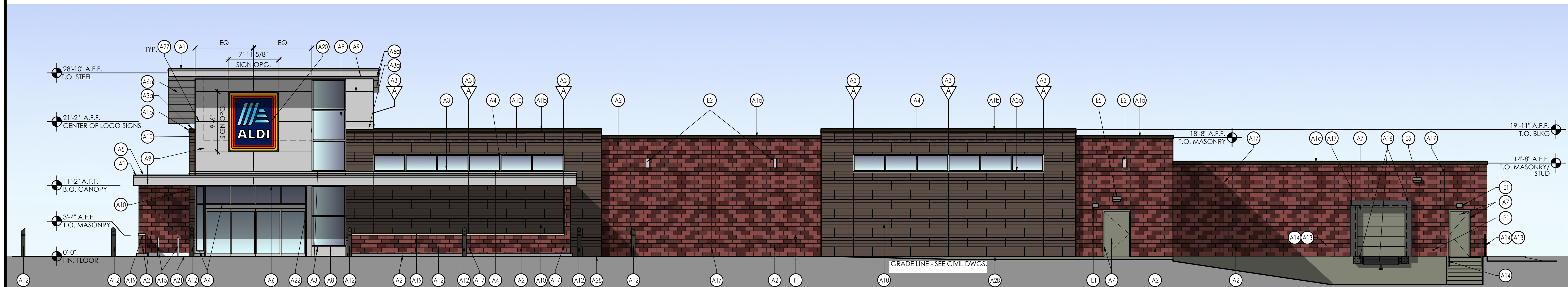
Seal	Seal
PROJECT ARCHITECT/ENGINEER	DATE
Amanda Speranza-Kelly	05/12/21
PROJECT LEAD	DATE
Sean Stonelake	05/12/21
PROJECT DESIGNER	DATE
Sean Stonelake	05/12/21

Copyright © 2021
APD Engineering & Architecture, PLLC
Drawing Alteration
It is a violation of law for any person, unless acting under the direction of licensed Architect, Professional Engineer, Landscape Architect, or Land Surveyor to alter any item on this document in any way. Any licensee who alters this document is required by law to affix his or her seal and to add the notation "Altered By" followed by his or her signature and the specific description of the alteration or revision.
DO NOT SCALE PLANS
Copying, Printing, Software and other processes required to produce these prints can stretch or shrink the actual paper or layout. Therefore, scaling of this drawing may be inaccurate. Contact APD E&A with any need for additional dimensions or clarifications.



ALDI Inc. Store #: 53R
Neptune NJ
Block 701, Lot 1
Neptune, NJ 07753
Monmouth County
Project Name & Location:

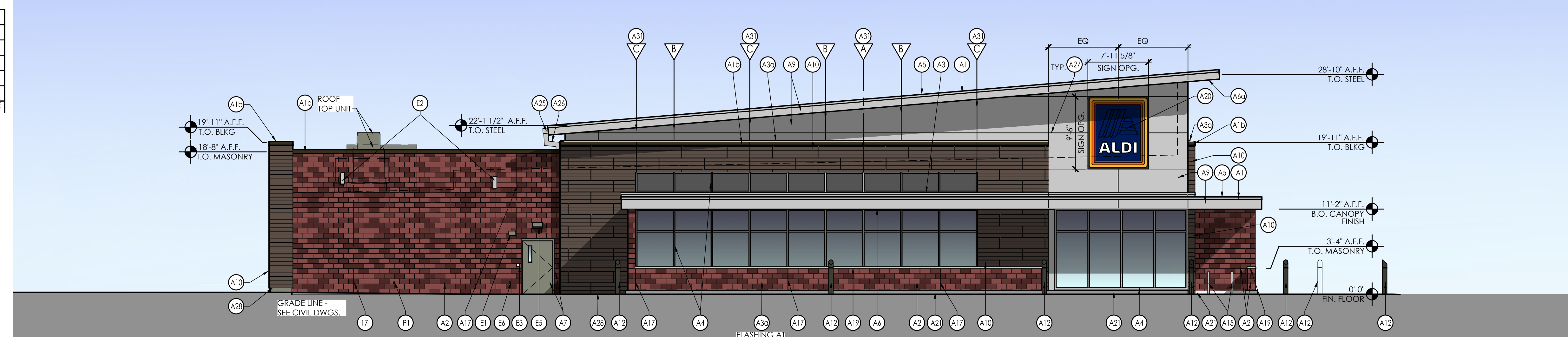
Exterior Elevations Drawing Name:	Project No. 19-0112a
Date: 03/19/21	
Type: RHSDV7ER	
Drawn By: SRS	A-201
Scale: As Noted	Drawing No.



2 Front Elevation
SCALE: 1/8" = 1'-0"

SIGNAGE			
DESCRIPTION	QUANTITY	SQ. FT. PER SIGN	TOTALS
TOWER SIGN	2	74.9	149.8
REAR SIGN	1	24	24.0
TOTAL SIGNAGE			173.8

SIGNAGE IS SHOWN FOR REFERENCE ONLY AND SHALL BE UNDER SEPARATE



1 Side Elevation
SCALE: 1/8" = 1'-0"