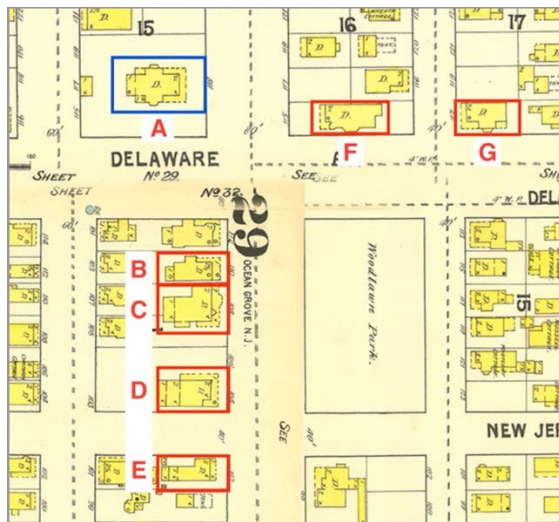


05. Survey of Window Styles on Neighboring Houses of the Same Period

118 Main Avenue has a variety of window styles. It is normal for Queen Anne designs to employ a variety of window types and styles. Evidence of previous modifications to and replacement of windows in this property may also explain some of the existing conditions.

To better understand the type and style of windows the house originally had, we examined similar houses also located around Fireman’s Park. Each of the referenced houses appear on the 1890 Sanborn map and were built in the Queen Anne style, making them similar in age and architectural style to 118 Main Avenue.



Detail from the 1890 Sanborn map. The subject property (A) is outlined in blue in the upper left corner; comparison properties (B-G) are outlined in red.

Note: Although each of the referenced houses has been modified to some degree over the course of the last century; each closely resembles their original footprint and retain many of their original windows. The variety of “fancy” windows found in these properties, is like the variety of windows found at 118 Main Avenue.

A) 118 Main Avenue

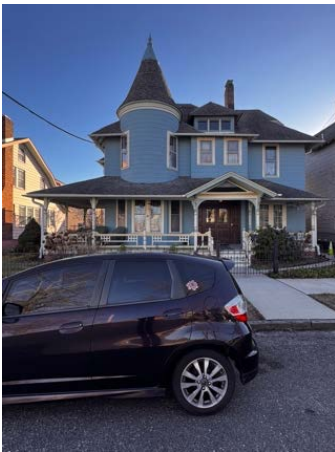
The application property is shown encircled in blue on the 1890 Sandborn map, above. Neighboring properties, of the same age and style, are noted in red and are examined in detail, below.

B) 110 Main Avenue



This property retains many of its original double-hung windows with jewel-toned “Chicklet” upper sashes.

C) 108 Main Avenue



This property also has jewel-toned “Chicklet” glass surrounding stained-glass medallions in the upper sashes. The original wooden entry doors are flanked by ornamental sidelights that abut the doors and are contained within the door-set trim.

D) 104 Main Avenue



The home retains original windows at the east elevation including stained-glass casement and stained-glass double hung. Sidelights and a transom at the front entry include jewel-toned stained-glass Georgian windows.

E) 102 Main Avenue



This house at the southeast corner of Fireman’s Park, has a variety of window configurations like those found at 118 Main Ave, including diamond and bars, diamond pattern, and gothic muntin patterns. A Palladian window group adorns the main gable in a manner similar to the Palladian window group on the east elevation of 118 Main Avenue.

F) 115 Main Avenue



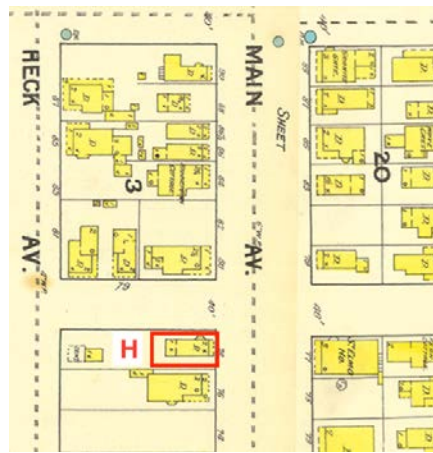
This house shares many architectural features 118 Main, including a cross-gable design with cut-away bay projections with an end gable supported by brackets. The house has a few of its original windows but new windows replicate the historic Queen Anne “Chicklet” pattern. The wide window at Level 1 of the front façade includes an upper pane of checkerboard muntins. The tower contains stained glass panels, original chicklet windows, and newer 2/2 double-hung windows at Level 3.

G) 115 Mount Hermon Way



This house retains many of its original jewel-toned Queen Anne “Chicklet” windows, most notably in the upper sashes the windows in the corner tower facing the park.

H) 78 Main Avenue



This house, located further east along Main Avenue, is also built in the Queen Anne style, though it uses a Gambrel roof in place of the more typical, gabled roof. Still, Gambrel roofs were found on some Queen Anne buildings. Other elements, such the age of the house, it's extensive use of shakes, the pediment above the entry stairs, and the inclusion of Georgian muntin patterns in the larger windows at the west, mark this as a property related to 118 Main.
